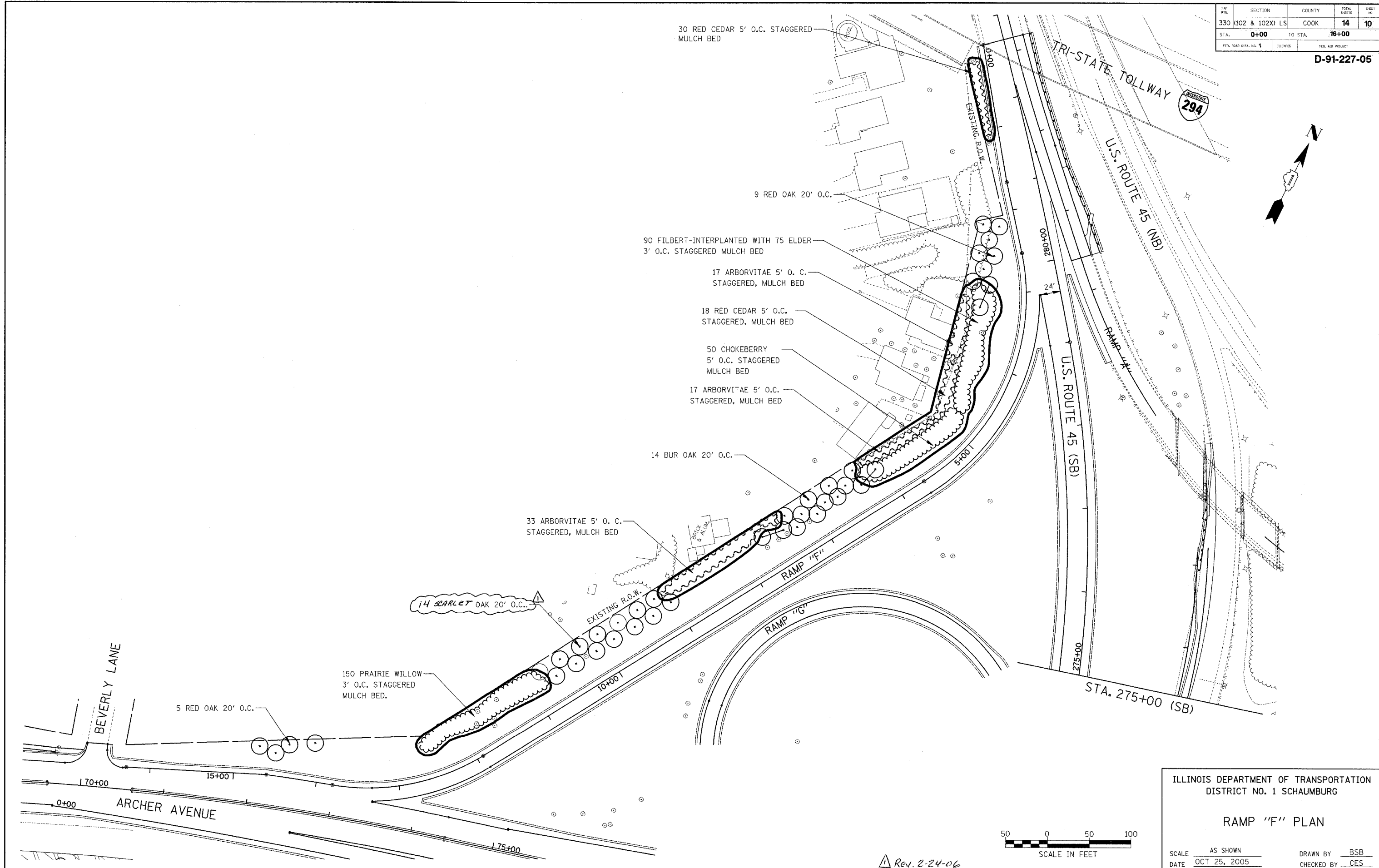
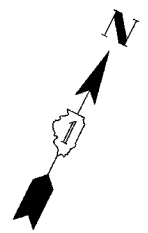


PAP. NO.	SECTION	COUNTY	TOTAL SHEETS	SHEET NO.
330 (102 & 102X) LS		COOK	14	10
STA. 0+00	TO STA. 16+00			
FED. ROAD DIST. NO. 1	ILLINOIS	FED. AID PROJECT		

D-91-227-05



ILLINOIS DEPARTMENT OF TRANSPORTATION  
DISTRICT NO. 1 SCHAUMBURG

RAMP "F" PLAN

SCALE AS SHOWN  
DATE OCT 25, 2005

DRAWN BY BSB  
CHECKED BY CES