

D-91-227-05

SUMMARY OF QUANTITIES			TOTAL QUANTITIES	CONSTRUCTION TYPE CODE				
CODE NO	ITEM	UNIT		URBAN				
				100% STATE				
			Y003					
20101350	TREE PRUNING (OVER 10 INCH DIAMETER)	EACH	5	5				
25000400	NITROGEN FERTILIZER NUTRIENT	POUND	155	155				
25000750	MOWING	ACRE	24	24				
25200200	SUPPLEMENTAL WATERING	UNIT	60	60				
67100100	MOBILIZATION	L SUM	1	1				
A2002516	TREE, CARPINUS CAROLINIANA (AMERICAN HORNBEAM), 2" CALIPER, BALLED AND BURLAPPED	EACH	3	3				
A2006712	TREE, QUERCUS MACROCARPA (BUR OAK), 1-1/2" CALIPER, BALLED AND BURLAPPED	EACH	14	14				
A2007114	TREE, QUERCUS RUBRA (RED OAK), 1-3/4" CALIPER, BALLED AND BURLAPPED	EACH	14	14				
A2006600	TREE, QUERCUS COCCINEA (SCARLET OAK), 1-3/4" CALIPER, BALLED AND BURLAPPED	EACH	14	14				
B2000562	TREE, AMELANCHIER CANADENSIS (SHADBLOW SERVICEBERRY), 4' HEIGHT, SHRUB FORM, BALLED AND BURLAPPED	EACH	50	50				
B2001164	TREE, CERCIS CANADENSIS (EASTERN REDBUD) 5' HEIGHT, CLUMP FORM, BALLED AND BURLAPPED	EACH	8	8				
C2000524	SHRUB, ARONIA MELANOCARPA (BLACK CHOKE BERRY), 2' HEIGHT, BALLED AND BURLAPPED	EACH	50	50				
C2001124	SHRUB, CEPHALANTHUS OCCIDENTALIS (BUTTON BUSH), 2' HEIGHT, BALLED AND BURLAPPED	EACH	10	10				
C2002024	SHRUB, CORYLUS AMERICANA (AMERICAN FILBERT), 2' HEIGHT, BALLED AND BURLAPPED	EACH	490	490				
C2003348	SHRUB, HAMAMELIS VIRGINIANA (COMMON WITCHHAZEL), 4' HEIGHT, BALLED AND BURLAPPED	EACH	50	50				
C2C06024	SHRUB, RHUS TYPHINA (STAGHORN SUMAC), 2' HEIGHT, CONTAINER	EACH	20	20				
C2C09418	SHRUB, SALIX HUMILIS (PRAIRIE WILLOW), 18" HEIGHT, CONTAINER	EACH	150	150				
C2C09624	SHRUB, SAMBUCUS CANADENSIS (AMERICAN ELDER), 2' HEIGHT, CONTAINER	EACH	75	75				
D2001560	EVERGREEN, JUNIPERUS VIRGINIANA (EASTERN RED CEDAR), 5' HEIGHT, BALLED AND BURLAPPED	EACH	48	48				

SUMMARY OF QUANTITIES			TOTAL QUANTITIES	CONSTRUCTION TYPE CODE				
CODE NO	ITEM	UNIT		URBAN				
				100% STATE				
			Y003					
D2003848	EVERGREEN, THUJA OCCIDENTALIS TECHN (TECHNY ARBORVITAE), 4' HEIGHT, BALLED AND BURLAPPED	EACH	67	67				
X0322856	WEED CONTROL, NON-SELECTIVE AND NON-RESIDUAL	GALLON	2.5	2.5				
X0322859	WEED CONTROL, PRE-EMERGENT GRANULAR HERBICIDE	POUND	160	160				
Z0013798	CONSTRUCTION LAYOUT	L SUM	1	1				
A2C02463	TREE, CELTIS OCCIDENTALIS (HACKBERRY), ^{COMMON} CONTAINER GROWN, 3-GALLON	EACH	70	70				
A2C03563	TREE, JUGLANS NIGRA (BLACK WALNUT), CONTAINER GROWN, 3-GALLON	EACH	70	70				
A2C02363	TREE, CARYA OVATA (SHAGBARK HICKORY) CONTAINER GROWN, 3-GALLON	EACH	140	140				
A2C04963	TREE, QUERCUS ALBA (WHITE OAK), CONTAINER GROWN, 3-GALLON	EACH	180	180				
A2C03363	TREE, QUERCUS COCCINEA (SCARLET OAK), CONTAINER GROWN, 3-GALLON	EACH	40	40				
A2C05363	TREE, QUERCUS IMBRICARIA (SHINGLE OAK), CONTAINER GROWN, 3-GALLON	EACH	120	120				
A2C05063	TREE, QUERCUS MACROCARPA (BUR OAK), CONTAINER GROWN, 3-GALLON	EACH	450	450				
A2C06163	TREE, QUERCUS RUBRA (RED OAK), CONTAINER GROWN, 3-GALLON	EACH	190	190				
A2C00763	TREE, AMELANCHIER CANADENSIS (SHADBLOW SERVICEBERRY) CONTAINER GROWN, 3-GALLON	EACH	140	140				

REVISIONS	
NAME	DATE

ILLINOIS DEPARTMENT OF TRANSPORTATION
SUMMARY OF QUANTITIES
U.S. RTE. 12/24/45
(LA GRANGE ROAD)

Rev. 2-24-06 Rev.

SCHEDULE OF LANDSCAPE ITEMS				SHEET NUMBER						
ITEM	UNIT	TOTAL	5	6	7	8	9	10	11	
SHADE TREES										
Carpinus caroliniana (American Hornbeam), 2" Caliper, Balled & Burlapped	EACH	3		3						
Celtis occidentalis (Hackberry), Container Grown, 3-Gallon	EACH	70							70	
Juglans nigra (Black Walnut), Container Grown, 3-Gallon	EACH	70							70	
Carya ovata (Shagbark Hickory) ^Δ Container Grown, 3-Gallon	EACH	140					60		80	
Quercus alba (White Oak), Container Grown, 3-Gallon	EACH	270				50	50		170	
Quercus coccinea (Scarlet Oak), 1-3/4" Caliper, Balled & Burlapped	EACH	14							14	
Quercus coccinea (Scarlet Oak), Container Grown, 3-Gallon	EACH	40							40	
Quercus imbricaria (Shingle Oak), Container Grown, 3-Gallon	EACH	120					60		60	
Quercus macrocarpa (Bur Oak), 1-1/2" Caliper, Balled & Burlapped	EACH	14							14	
Quercus macrocarpa (Bur Oak), Container Grown, 3-Gallon	EACH	360					50		310	
Quercus rubra (Red Oak), 1-3/4" Caliper, Balled & Burlapped	EACH	14							14	
Quercus rubra (Red Oak), Container Grown, 3-Gallon ^Δ	EACH	190				50	50		90	
INTERMEDIATE TREES										
Amelanchier canadensis (Shadblow Serviceberry), 4' Height, Shrub Form, B & B	EACH	50					50			
Amelanchier canadensis (Shadblow Serviceberry), Container Grown, 3-Gallon	EACH	140				50			90	^Δ
Cercis canadensis (Eastern Redbud), 5' Height, Clump Form, Balled & Burlapped	EACH	8	8							
SHRUBS										
Aronia melanocarpa (Black Chokeberry), 2' Height, Balled & Burlapped	EACH	50							50	
Cephalanthus occidentalis (Buttonbush), 2' Height, Balled & Burlapped	EACH	10		10						
Corylus americana (American Filbert), 2' Height, Balled & Burlapped	EACH	490	200			200			90	
Hamamelis virginiana (Common Witchhazel), 2' Height, Balled & Burlapped	EACH	50					50			
Rhus typhina (Staghorn Sumac), 2' Height, Container	EACH	20		20						
Salix humilis (Prairie Willow), 18" Height, Container	EACH	150							150	
Sambucus canadensis (American Elder), 2' Height, Container	EACH	75							75	
EVERGREENS										
Juniperus virginiana (Eastern Red Cedar), 5' Height, Balled & Burlapped	EACH	48							48	
Thuja occidentalis Techny (Techny Arborvitae), 4' Height, Balled & Burlapped	EACH	67							67	
OTHER										

GENERAL NOTES

BEFORE STARTING ANY EXCAVATION, THE CONTRACTOR SHALL CALL "J.U.L.I.E." AT (800) 892-0123 FOR FIELD LOCATIONS OF BURIED ELECTRIC, TELEPHONE AND GAS UTILITIES. (48 HOUR NOTIFICATION IS REQUIRED).

VILLAGE WATER, SEWER MAINS AND OTHER UTILITIES MAY BE LOCATED IN THE LANDSCAPE AREA. THE ACTUAL LOCATION OF PROPOSED LANDSCAPING WILL BE ADJUSTED IN THE FIELD TO AVOID UTILITIES. THE VILLAGE OF WILLOW SPRINGS AND THE FOREST PRESERVE DISTRICT OF COOK COUNTY ARE NOT PART OF "J.U.L.I.E." THE CONTRACTOR SHALL CONTACT THE RESPECTIVE VILLAGES TO LOCATE THEIR UTILITIES.

THE CONTRACTOR WILL NOT BE ALLOWED TO PROCEED WITH ANY PLANTING WORK UNTIL ALL UTILITY OWNERS FIELD LOCATE THEIR FACILITIES WHICH MAY INTERFERE WITH LANDSCAPING OPERATIONS.

THE CONTRACTOR WILL NOT BE ALLOWED TO SET UP A YARD OR FIELD OFFICE ON STATE PROPERTY OR FOREST PRESERVE HOLDINGS WITHOUT WRITTEN PERMISSION FROM THE DEPARTMENT OR THE FOREST PRESERVE DISTRICT OF COOK COUNTY.

IT SHALL BE THE CONTRACTOR'S RESPONSIBILITY TO VERIFY ALL DIMENSIONS AND CONDITIONS EXISTING IN THE FIELD PRIOR TO CONSTRUCTION AND ORDERING OF MATERIALS.

THE CONTRACTOR SHALL CONTACT THE DISTRICT ONE TRAFFIC CONTROL SUPERVISOR AT (847) 705-4155 A MINIMUM OF 72 HOURS IN ADVANCE OF BEGINNING WORK.

UNDERBRUSH OR DEBRIS AT PLANTING LOCATIONS SHALL BE REMOVED AND DISPOSED OF IN ACCORDANCE WITH SECTION 201 OF THE STANDARD SPECIFICATIONS. THIS WORK WILL NOT BE PAID FOR SEPARATELY, BUT THE COSTS SHALL BE CONSIDERED AS INCLUDED IN THE CONTRACT UNIT PRICES FOR THE CONSTRUCTION ITEMS INVOLVED, AND NO ADDITIONAL COMPENSATION WILL BE ALLOWED.

THE CONTRACTOR SHALL PROTECT ALL EXISTING PLANT MATERIAL FROM DAMAGE FOR WHICH THE CONTRACT DOES NOT PROVIDE REMOVAL. THE PROTECTION OF EXISTING PLANT MATERIAL AND THE REPAIR OR REPLACEMENT OF EXISTING PLANT MATERIAL DAMAGED BY THE CONTRACTOR SHALL BE DONE IN ACCORDANCE WITH THE REQUIREMENTS OF SECTION 201 OF THE STANDARD SPECIFICATIONS UNLESS OTHERWISE NOTED.

THE CONTRACTOR SHALL ORDER ALL CONTAINER TREES IMMEDIATELY FOLLOWING EXECUTION OF THE CONTRACT TO ASSURE AVAILABILITY OF THE PLANT MATERIAL FOR SPRING PLANTING.

THE RESIDENT ENGINEER IN COORDINATION WITH THE DISTRICT LANDSCAPE ARCHITECT WILL STAKE ALL TREE PLANTINGS AT THE TREE MITIGATION SITE. UNLESS OTHERWISE NOTIFIED, THE CONTRACTOR SHALL PROVIDE AN ADEQUATE NUMBER OF LATHES SEVERAL WEEKS PRIOR TO THE SCHEDULED TREE PLANTING.

WHERE MULCH BEDS ARE SPECIFIED, ALL EXISTING GRASS, WEEDS, AND DEBRIS ARE TO BE REMOVED AND THE BEDS TILLED TO A DEPTH OF 6 INCHES PRIOR TO PLACING PROPOSED PLANTS. FOLLOWING PLANTING, BEDS SHALL BE MULCHED TO A DEPTH OF 4 INCHES. THIS WORK WILL BE CONSIDERED INCLUDED IN THE CONTRACT UNIT PRICE FOR THE PLANTING ITEMS.

REVISIONS	
NAME	DATE

ILLINOIS DEPARTMENT OF TRANSPORTATION

SCHEDULE OF LANDSCAPE ITEMS

GENERAL NOTES

SCALE: VERT. HORIZ.

DATE _____ DRAWN BY _____ CHECKED BY _____

^Δ Rev. 2-24-06 Rev.

CALENDAR OF CONSTRUCTION AND ESTABLISHMENT WORK

Phase I	YEAR	WORK DATES		TREE MITIGATION SITE		CORRIDOR SITE	
		FROM	TO	CONSTRUCTION WORK	ESTABLISHMENT WORK	CONSTRUCTION WORK	ESTABLISHMENT WORK
	2006	Prior to planting			Weed spray of non-selective, non-residual herbicide in designated planting areas.	Planting layout	Weed spray of non-selective, non-residual herbicide in designated planting areas.
		Thawed Soil	Apr. 30	Finish installation of all container trees by April 30. Apply Pre-emergent Granular Herbicide and mulch.	Supplemental Watering of woody plants if required by Engineer.	Finish installation of all container trees by April 30. Install evergreens. Apply Pre-emergent Granular Herbicide and mulch.	Supplemental Watering of woody plants if required by Engineer.
		Apr. 1	Apr. 15	Period of establishment plant care required for woody plants.*		Period of establishment plant care required for woody plants.*	
		Apr. 15	Apr. 30	Period of establishment plant care required for woody plants.*		Period of establishment plant care required for woody plants.*	
		May 1		Certification to the Bureau of Maintenance that all container trees have been installed and are in a live healthy condition and eligible for a May 31, 2006 period of establishment inspection.			
		May 1	May 15	Period of establishment plant care required for woody plants.*		Period of establishment plant care required for woody plants.*	
		Thawed Soil	May 15			Finish installation of all woody plants by May 15. Apply Pre-Emergent Granular Herbicide.	
		May 15	May 30	Period of establishment plant care required for woody plants.*		Period of establishment plant care required for woody plants.*	

Phase II	YEAR	WORK DATES		TREE MITIGATION SITE		CORRIDOR SITE	
		FROM	TO	CONSTRUCTION WORK	ESTABLISHMENT WORK	CONSTRUCTION WORK	ESTABLISHMENT WORK
	2006	June 1				Certification to the Bureau of Maintenance that all woody plants have been installed and are in a live healthy condition and eligible for a September 2006 period of establishment inspection.	
		June 1	June 15	1) Installation of all required replacement container trees and all required clean up shall be completed by this date. Apply Pre-Emergent Granular Herbicide and mulch.		1) Installation of all required replacement container trees and all required clean up shall be completed by this date. Apply Pre-Emergent Granular Herbicide and mulch. 2) Period of establishment plant care required for woody plants.*	
		June 15	June 30			Period of establishment plant care required for woody plants.*	
		July 1	July 15			Period of establishment plant care required for woody plants.*	Supplemental Watering of woody plants if required by Engineer.
		July 15	July 31			Period of establishment plant care required for woody plants.*	
		Aug. 1	Aug. 15			Period of establishment plant care required for woody plants.*	Supplemental Watering of woody plants if required by Engineer.
		Aug. 15	Aug. 31			Period of establishment plant care required for woody plants.*	
		Sept. 1	Sept. 15			Period of establishment plant care required for woody plants.*	
		Sept. 15	Sept. 30			Period of establishment plant care required for woody plants.*	

Phase III	YEAR	WORK DATES		CONSTRUCTION WORK	ESTABLISHMENT WORK	CONSTRUCTION WORK	ESTABLISHMENT WORK
		FROM	TO				
	2007	Thawed Soil	May 15			Installation of all required replacement woody plants, and all required clean up of woody plants shall be completed by this date.	Apply Pre-Emergent Granular Herbicide to all woody plants.
		May 15	May 31				Mow turf areas to a turf height of 3 inches.

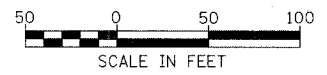
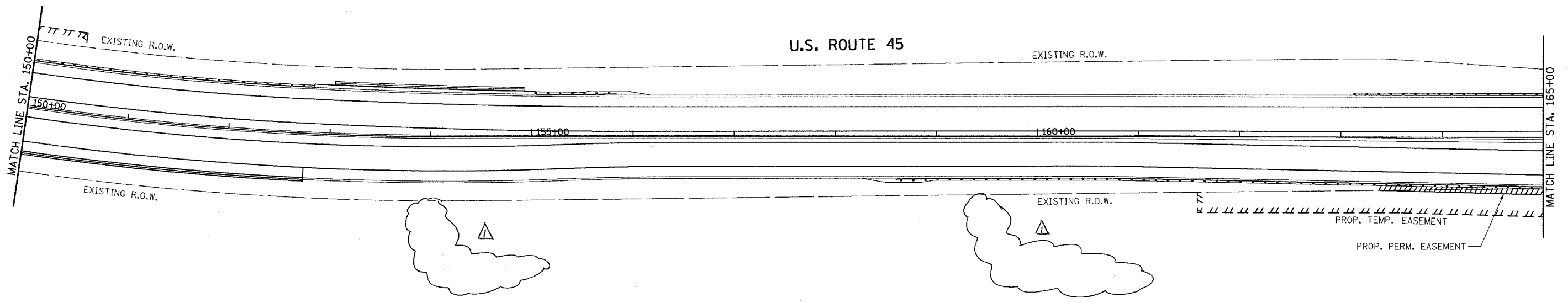
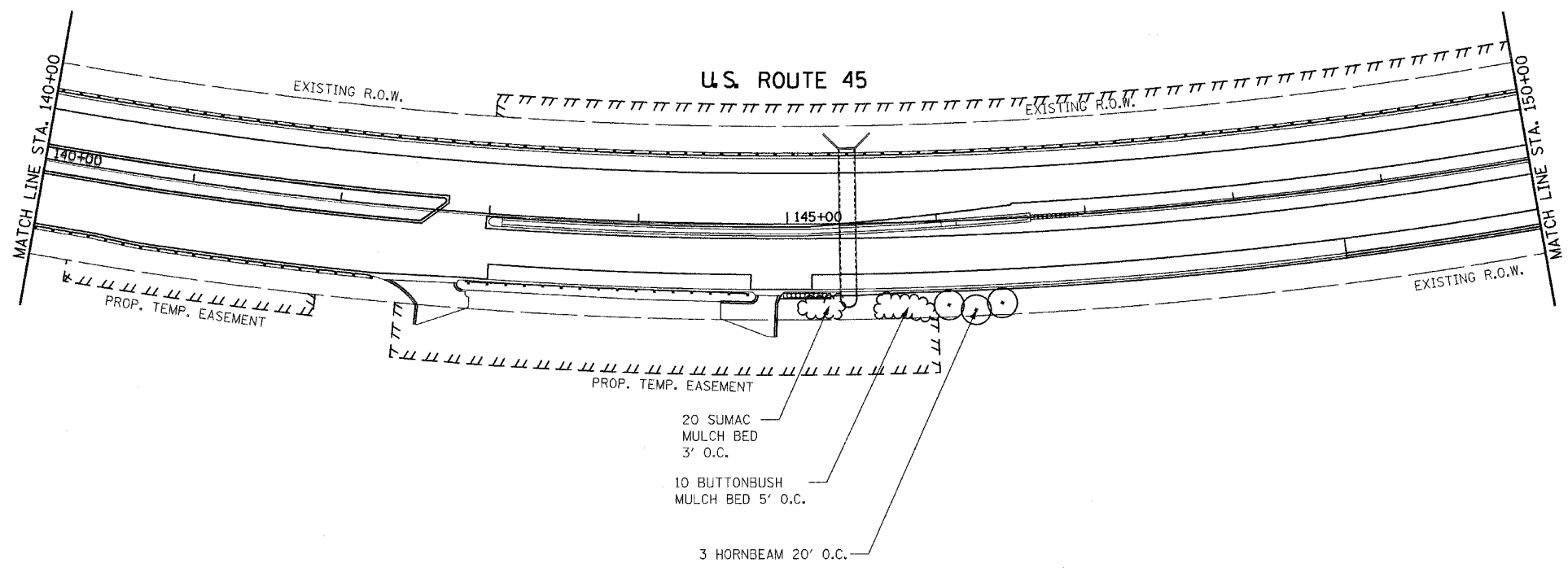
* Weeding, watering and other work which is necessary to maintain health and satisfactory appearance of the planting is included in the cost of the contract.

ILLINOIS DEPARTMENT OF TRANSPORTATION	
CALENDAR OF CONSTRUCTION AND ESTABLISHMENT WORK	
SCALE: VERT. _____ HORIZ. _____	
DATE _____	
DRAWN BY _____ CHECKED BY _____	

Rev. Sheet 2-24-06

FAC. RITE.	SECTION	COUNTY	TOTAL SHEETS	SHEET NO.
330 (102 & 102X) LS		COOK	14	6
STA. 140+00	TO STA. 165+00			
FED. ROAD DIST. NO. 1	ILLINOIS	FED. AID PROJECT		

D-91-227-05

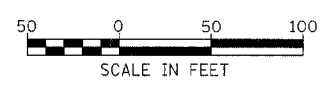
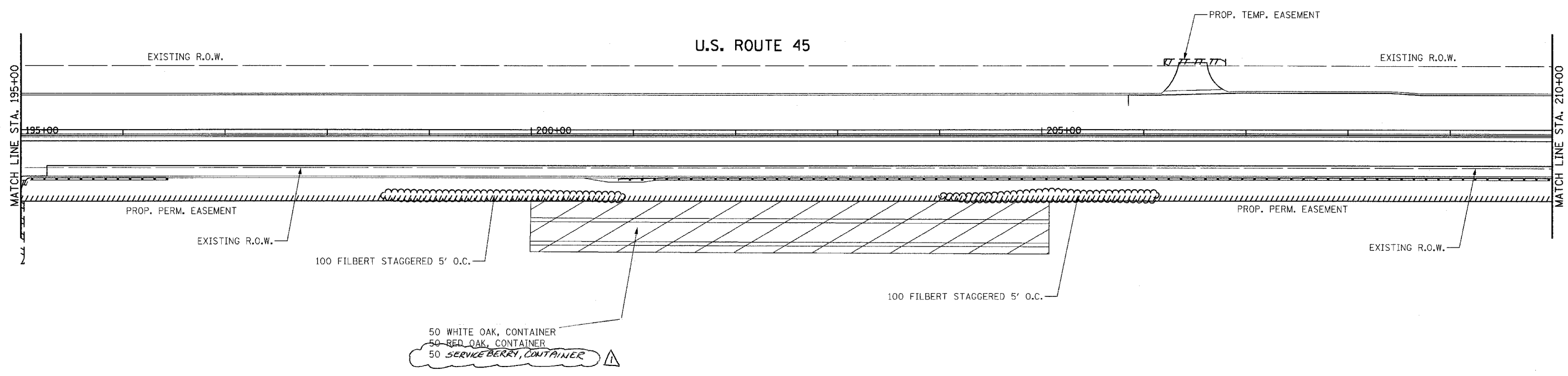


Rev. 2-24-06

ILLINOIS DEPARTMENT OF TRANSPORTATION
DISTRICT NO. 1 SCHAUMBURG
LANDSCAPING PLAN
U.S. ROUTE 45
SCALE AS SHOWN
DATE OCT 25, 2005
DRAWN BY BSB
CHECKED BY CES

F&P R/L	SECTION	COUNTY	TOTAL SHEETS	SHEET NO.
330 (102 & 102X) LS		COOK	14	8
STA. 195+00	TO STA. 210+00			
FED. ROAD DIST. NO. 1	ILLINOIS	FED. AID PROJECT		

D-91-227-05

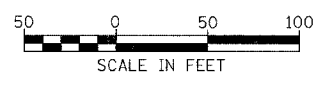
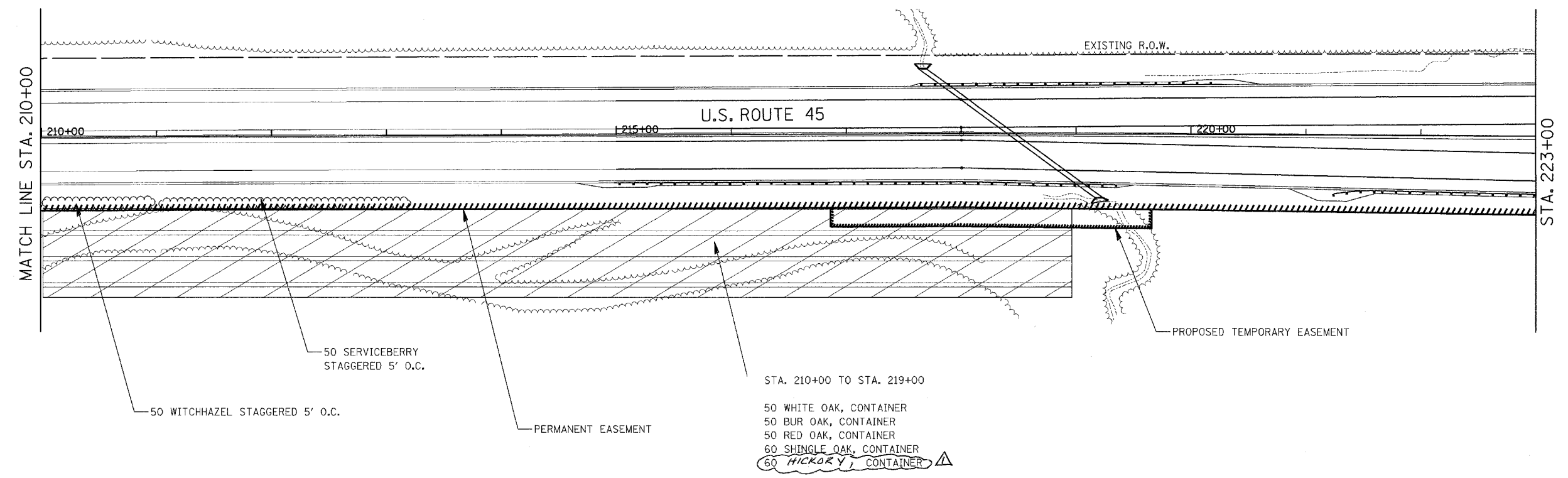


△ Rev. 2-24-06

ILLINOIS DEPARTMENT OF TRANSPORTATION
DISTRICT NO. 1 SCHAUMBURG
LANDSCAPING PLAN
U.S. ROUTE 45
SCALE AS SHOWN
DATE OCT 25, 2005
DRAWN BY BSB
CHECKED BY CES

F.P. NO.	SECTION	COUNTY	TOTAL SHEETS	SHEET NO.
330	(102 & 102X) LS	COOK	14	9
STA.	210+00	TO STA.	223+00	
FED. ROAD DIST. NO. 1	ILLINOIS	FED. AID PROJECT		

D-91-227-05

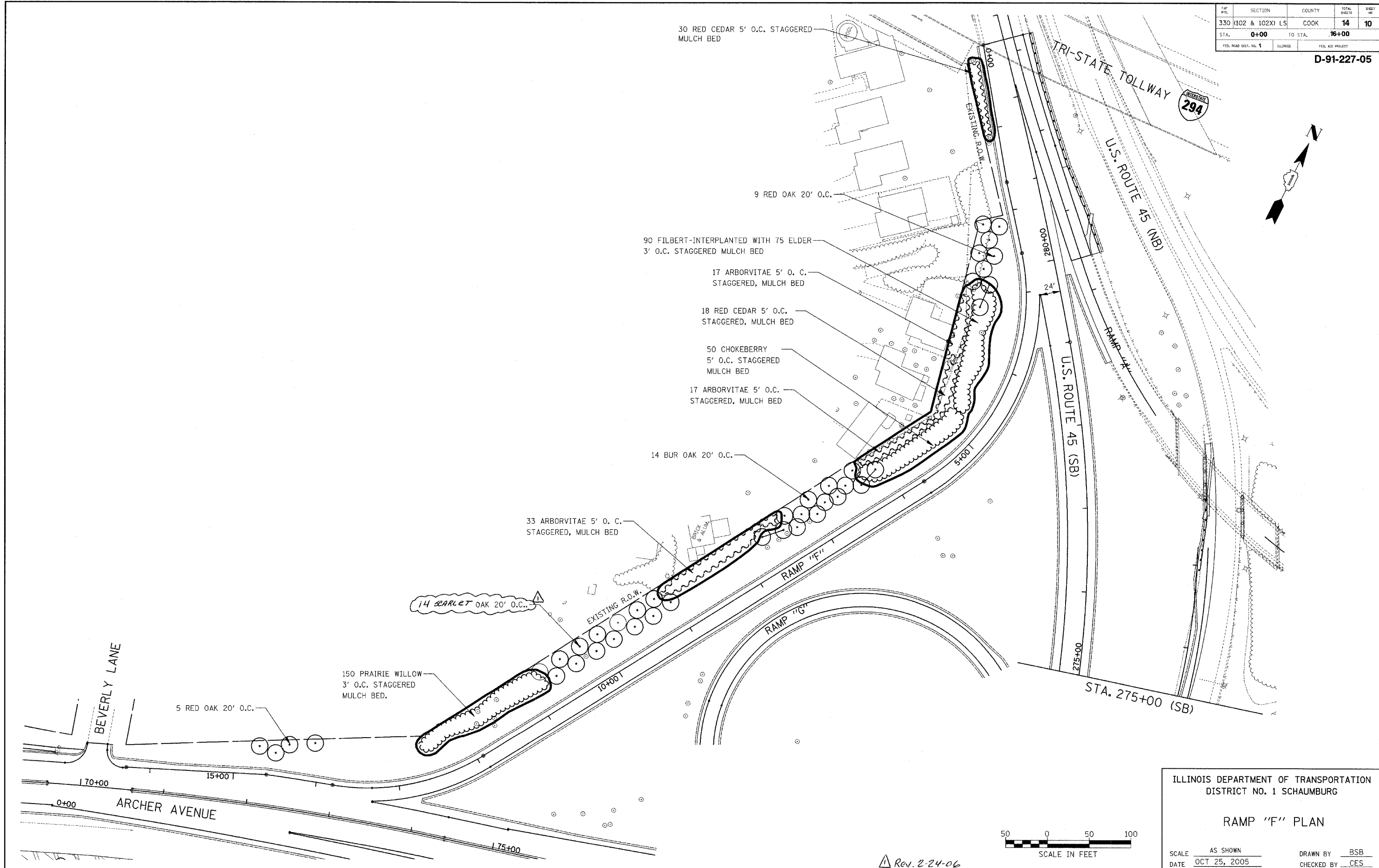
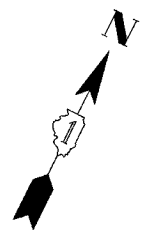


Rev. 2-24-06

ILLINOIS DEPARTMENT OF TRANSPORTATION
DISTRICT NO. 1 SCHAUMBURG
LANDSCAPING PLAN
U.S. ROUTE 45
SCALE AS SHOWN
DATE OCT 25, 2005
DRAWN BY BSB
CHECKED BY CES

PAP. NO.	SECTION	COUNTY	TOTAL SHEETS	SHEET NO.
330 (102 & 102X) LS		COOK	14	10
STA. 0+00	TO STA. 16+00			
FED. ROAD DIST. NO. 1	ILLINOIS	FED. AID PROJECT		

D-91-227-05

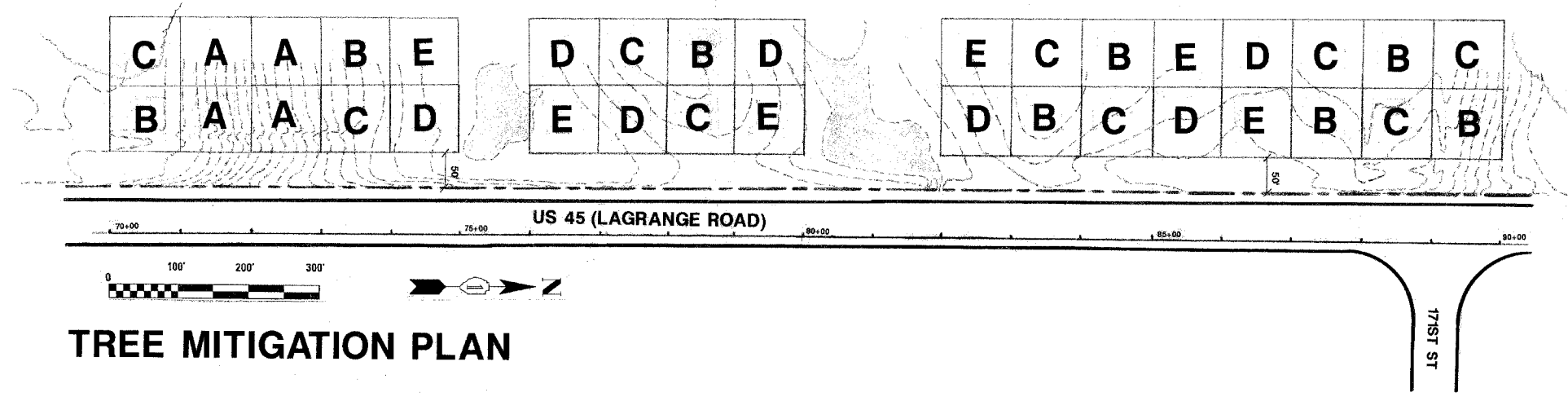


ILLINOIS DEPARTMENT OF TRANSPORTATION
DISTRICT NO. 1 SCHAUMBURG

RAMP "F" PLAN

SCALE AS SHOWN
DATE OCT 25, 2005
DRAWN BY BSB
CHECKED BY CES

Rev. 2-24-06



TREE MITIGATION PLAN

NOTE: SEE SHEETS 12-14 FOR TREE GROUPING KEYS

SCHEDULE OF LANDSCAPE ITEMS (TREE MITIGATION SITE ONLY)						
ITEM	HABITAT	GROUP	QUANTITY OF GROUPS	QUANTITY PER GROUP	UNIT	TOTAL
Celtis occidentalis (Hackberry), CONTAINER GROWN, 3 GALLON	LOWLAND MESIC	D	7	10	EACH	70
Juglans nigra (Black Walnut), CONTAINER GROWN, 3 GALLON	LOWLAND MESIC	D	7	10	EACH	70
<i>Carya ovata</i> (Shagbark Hickory), CONTAINER GROWN, 3 GAL.	UPLAND MESIC	B	8	10	EACH	80
Quercus alba (White Oak), CONTAINER GROWN, 3 GALLON	UPLAND MESIC	B	8	10	EACH	80
	UPLAND MESIC	C	9	10		90
Quercus imbricaria (Shingle Oak), CONTAINER GROWN, 3 GALLON	LOWLAND WET	E	6	10	EACH	60
<i>Quercus coccinea</i> (Scarlet Oak), CONTAINER GROWN, 3 GALLON	UPLAND DRY	A	4	10	EACH	40
Quercus macrocarpa (Bur Oak), CONTAINER GROWN, 3 GALLON	UPLAND DRY	A	4	10	EACH	40
	UPLAND MESIC	B	8	10		80
	LOWLAND MESIC	D	7	10		70
	LOWLAND WET	E	6	20		120
Quercus rubra (Red Oak), CONTAINER GROWN, 3 GALLON	UPLAND MESIC	C	9	10	EACH	90
<i>Amelanchier canadensis</i> (Shadow Serviceberry) Container Grown, 3-gallon	UPLAND MESIC	C	9	10	EACH	90
TOTAL					EACH	980

REVISIONS	
NAME	DATE

ILLINOIS DEPARTMENT OF TRANSPORTATION

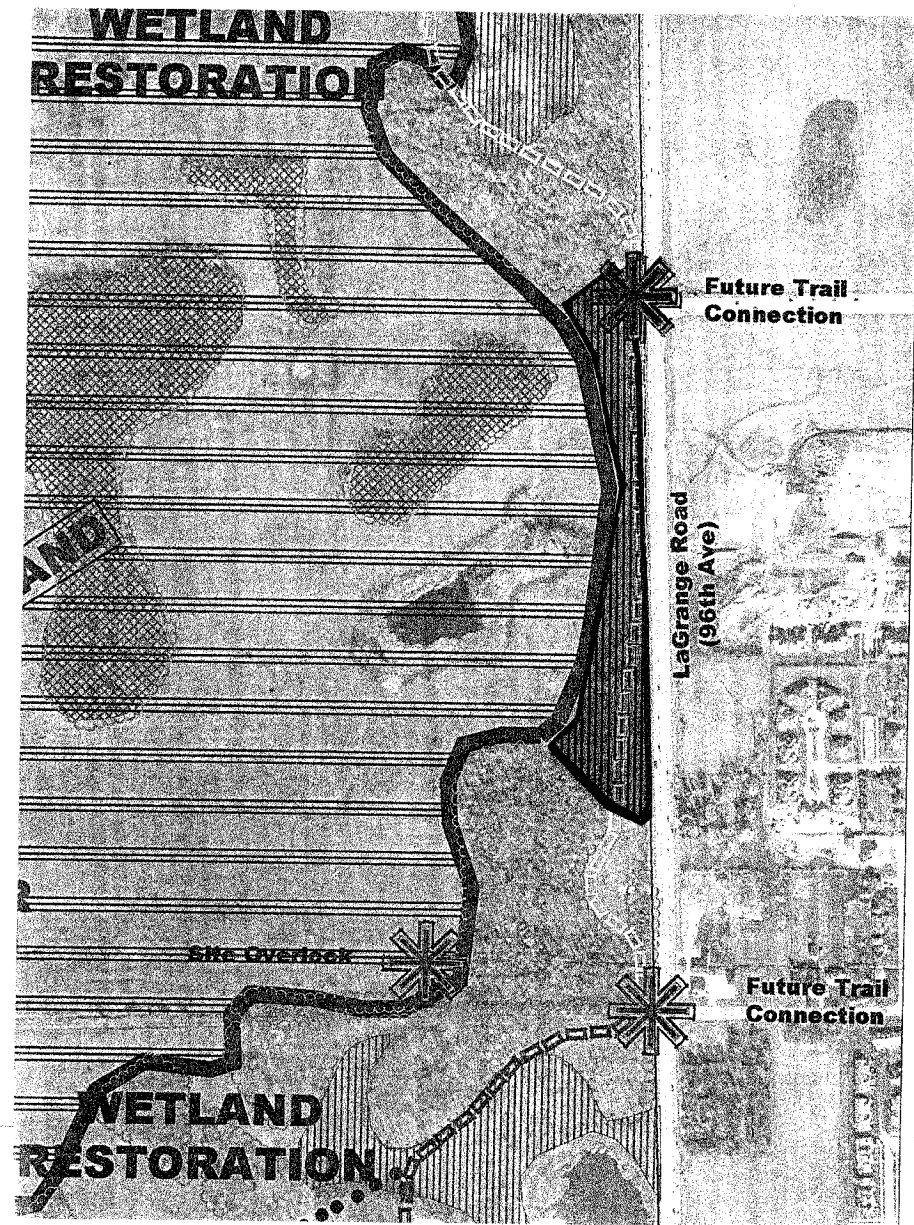
TREE MITIGATION PLAN

SCHEDULE OF QUANTITIES (TREE MITIGATION SITE)

SCALE: VERT. _____
 HORIZ. _____

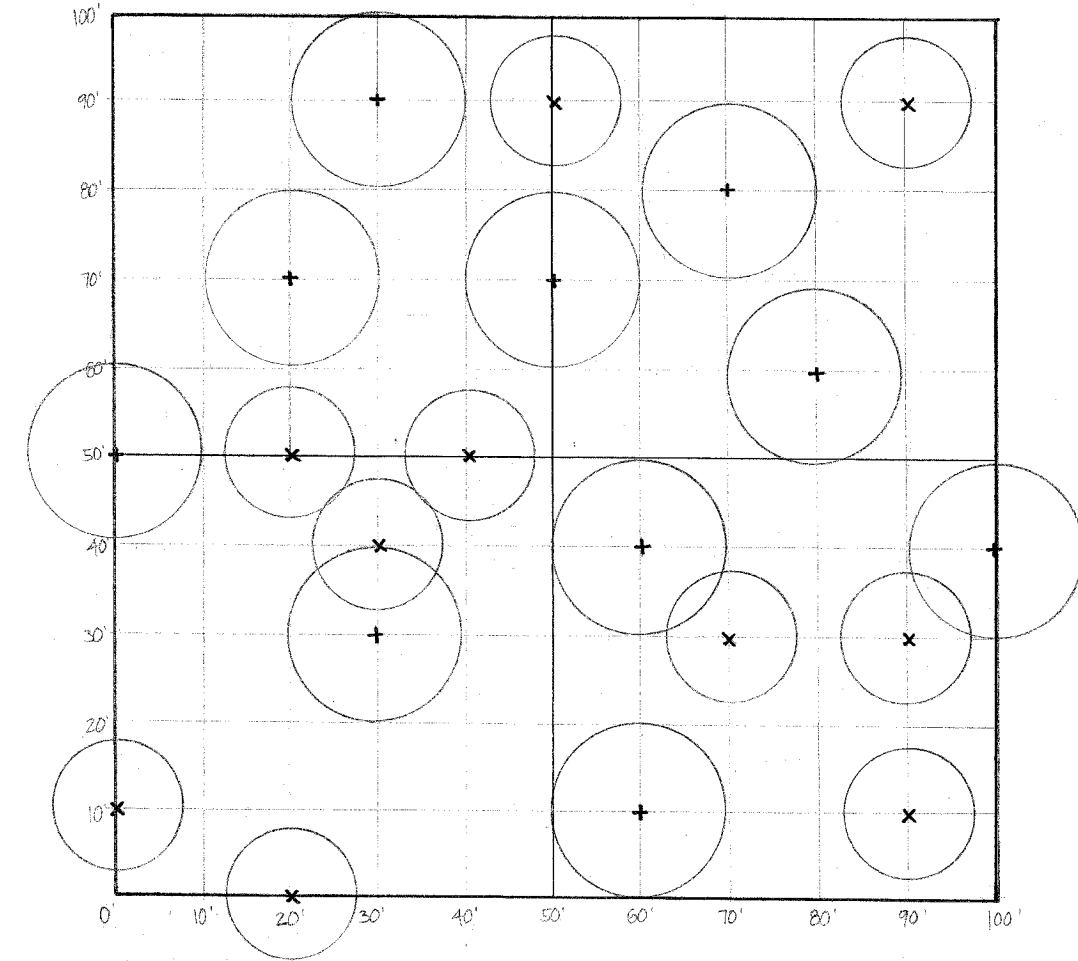
DATE _____ DRAWN BY _____
 CHECKED BY _____

Rev. 2-24-06



FOREST PRESERVE DISTRICT OF COOK COUNTY
ORLAND TRACT DEVELOPMENT PLAN

 GENERAL AREA OF REFORESTATION

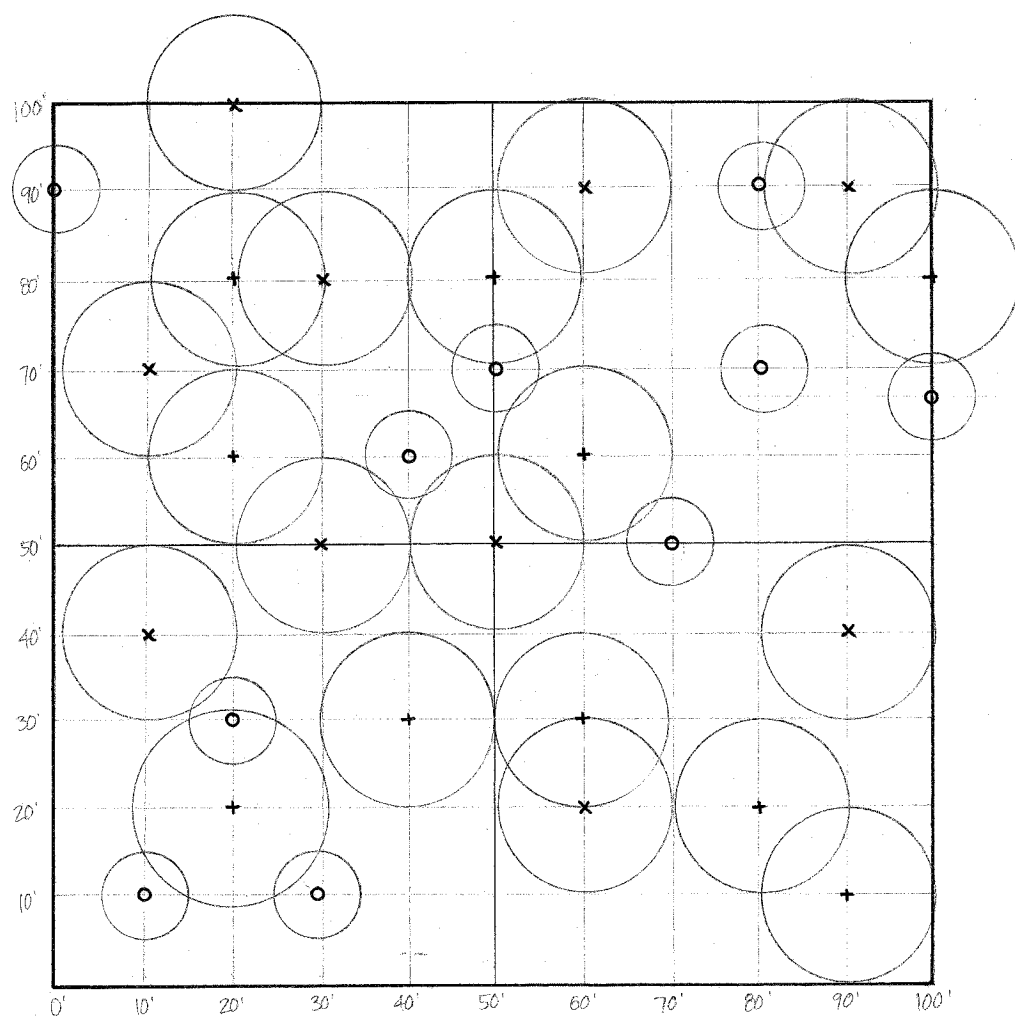


A – UPLAND DRY
 BUR ^{SCARLET OAK} Δ
 + *Quercus macrocarpa* (Bur Oak) Δ 10 Each
 x *Quercus coccinea* (Scarlet Oak) 10 Each
 Total 20 Each

REVISIONS	
NAME	DATE

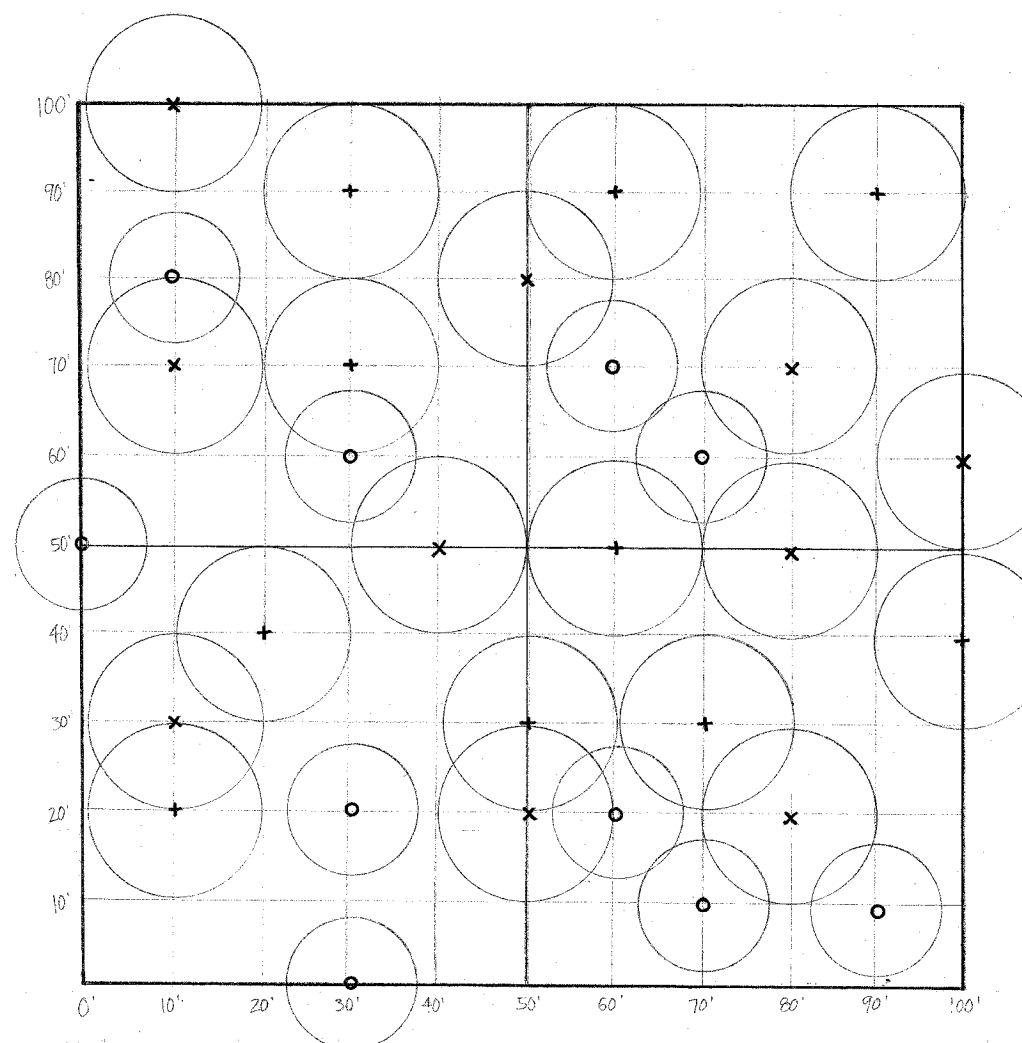
ILLINOIS DEPARTMENT OF TRANSPORTATION
FPDCC DEVELOPMENT PLAN
TREE GROUPING KEY A
 SCALE: VERT. _____
 HORIZ. _____
 DATE _____ DRAWN BY _____
 CHECKED BY _____

Δ Rev. 2-24-06



B – UPLAND MESIC
WHITE/BUR OAK

- x *Quercus alba* (White Oak) 10 Each
 - + *Quercus macrocarpa* (Bur Oak) 10 Each
 - o *Carya ovata* (Shagbark Hickory) 10 Each
- Total 30 Each



C – UPLAND MESIC
RED/WHITE OAK

- + *Quercus rubra* (Red Oak) 10 Each
 - x *Quercus alba* (White Oak) 10 Each
 - o *Amelanchier canadensis* (Shadbloow Serviceberry) 10 Each
- Total 30 Each

ILLINOIS DEPARTMENT OF TRANSPORTATION

TREE GROUPING
KEYS B & C

REVISIONS	
NAME	DATE

SCALE: VERT.
 HORIZ.
 DATE

DRAWN BY
 CHECKED BY

Rev. 2-24-06