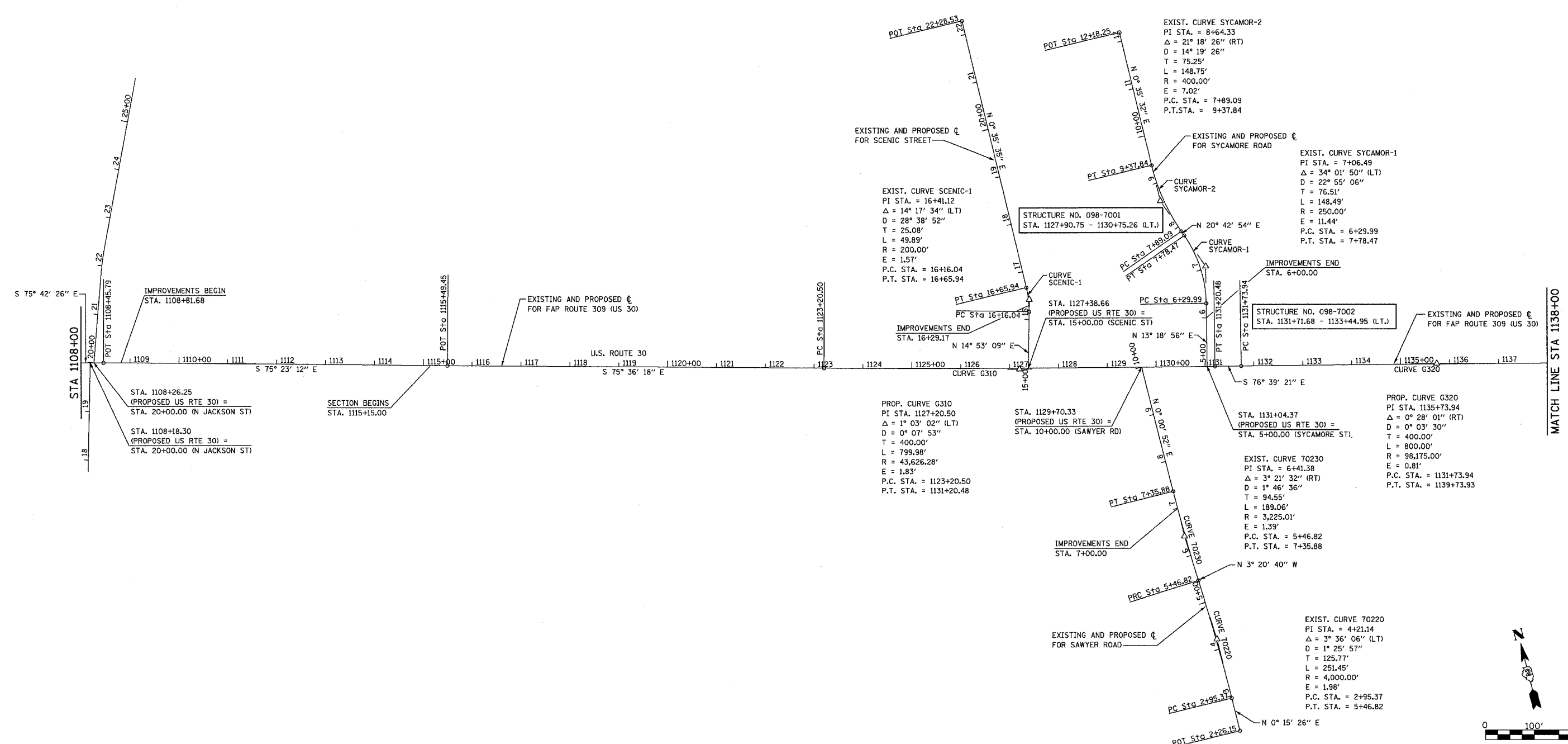


F.A.P. RTE.	SECTION	COUNTY	TOTAL SHEETS	SHEET NO.
309	16R-2	WHITESIDE	547	31
STA. 1108+00 TO STA. 1138+00			FED. ROAD DIST. NO. 2 ILLINOIS FED. AID PROJECT	



REVISIONS	
NAME	DATE

ILLINOIS DEPARTMENT OF TRANSPORTATION
 ALIGNMENT
 FAP ROUTE 309 (US 30)
 SECTION 16R-2
 EAST CONTRACT
 FROM 0.2 MILE EAST OF JACKSON ST.
 TO FRENCH CREEK
 WHITESIDE COUNTY

SCALE: 1"=100'
 DATE 7/14/05

DRAWN BY MGM
 CHECKED BY RDY