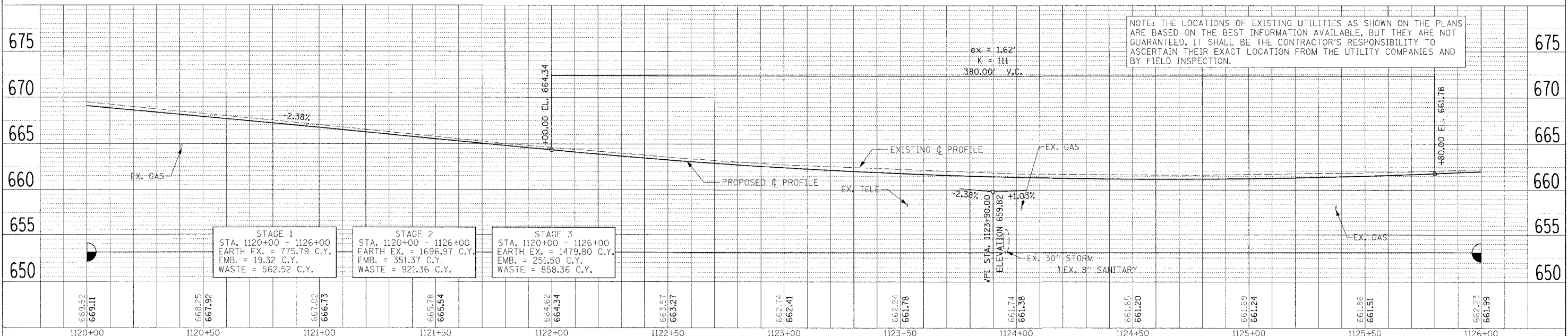
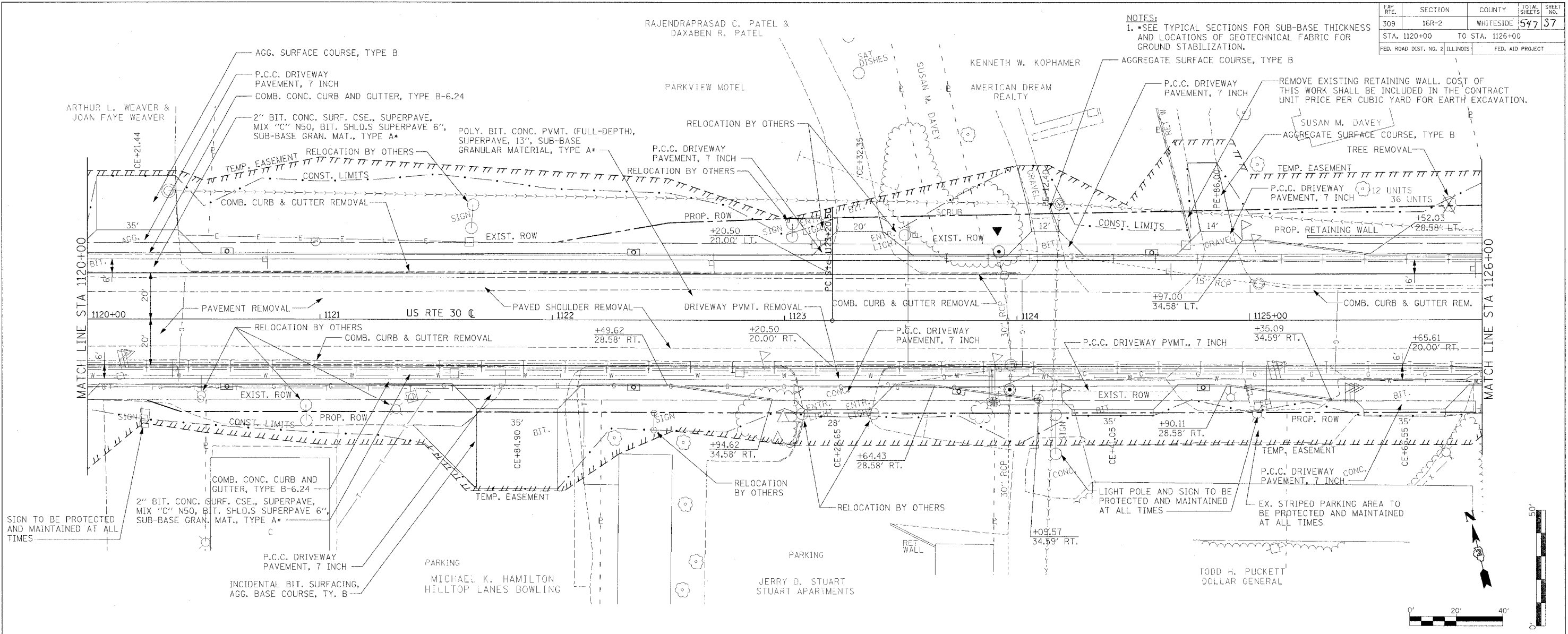


FED. RTE.	SECTION	COUNTY	TOTAL SHEETS	SHEET NO.
309	16R-2	WHITESIDE	547	37
STA. 1120+00 TO STA. 1126+00				
FED. ROAD DIST. NO. 2 ILLINOIS			FED. AID PROJECT	

NOTES:  
 1. SEE TYPICAL SECTIONS FOR SUB-BASE THICKNESS AND LOCATIONS OF GEOTECHNICAL FABRIC FOR GROUND STABILIZATION.

RAJENDRAPRASAD C. PATEL & DAXABEN R. PATEL



NOTE: THE LOCATIONS OF EXISTING UTILITIES AS SHOWN ON THE PLANS ARE BASED ON THE BEST INFORMATION AVAILABLE, BUT THEY ARE NOT GUARANTEED. IT SHALL BE THE CONTRACTOR'S RESPONSIBILITY TO ASCERTAIN THEIR EXACT LOCATION FROM THE UTILITY COMPANIES AND BY FIELD INSPECTION.

STAGE	STA. RANGE	EARTH EX.	EMB.	WASTE
STAGE 1	STA. 1120+00 - 1126+00	775.79 C.Y.	19.32 C.Y.	562.52 C.Y.
STAGE 2	STA. 1120+00 - 1126+00	1696.97 C.Y.	351.37 C.Y.	921.36 C.Y.
STAGE 3	STA. 1120+00 - 1126+00	1479.80 C.Y.	251.50 C.Y.	858.36 C.Y.

PLAN AND PROFILE (US RTE 30)

DATE: \_\_\_\_\_ BY: \_\_\_\_\_

REVISIONS:

NO.	DATE	DESCRIPTION

DATE: \_\_\_\_\_ BY: \_\_\_\_\_

REVISIONS:

NO.	DATE	DESCRIPTION

DATE TIME: \_\_\_\_\_  
 DRAWN BY: \_\_\_\_\_  
 CHECKED BY: \_\_\_\_\_  
 IN CHARGE: \_\_\_\_\_