

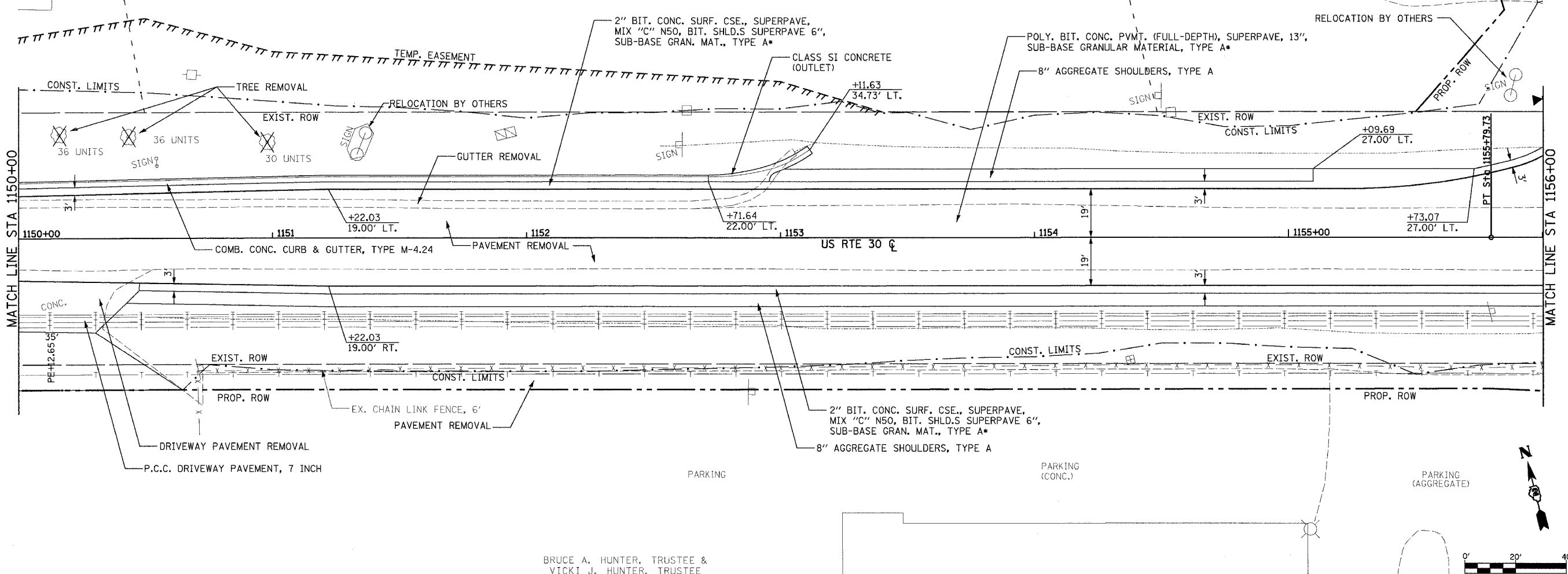
FAP R/O	SECTION	COUNTY	TOTAL SHEETS	SHEET NO.
309	16R-2	WHITESIDE	547	42
STA. 1150+00 TO STA. 1156+00				
FED. ROAD DIST. NO. 2 ILLINOIS		FED. AID PROJECT		

NOTES:  
1. SEE TYPICAL SECTIONS FOR SUB-BASE THICKNESS AND LOCATIONS OF GEOTECHNICAL FABRIC FOR GROUND STABILIZATION.

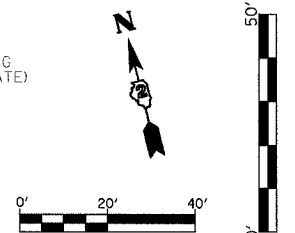
BARBERA A. BERGE, 1/2 INTEREST  
ESTATE OF DENNIS D. WOOD, 1/2 INTEREST

JOEL A. MEDEMA

RELOCATION BY OTHERS



BRUCE A. HUNTER, TRUSTEE &  
VICKI J. HUNTER, TRUSTEE



NOTE: THE LOCATIONS OF EXISTING UTILITIES AS SHOWN ON THE PLANS ARE BASED ON THE BEST INFORMATION AVAILABLE, BUT THEY ARE NOT GUARANTEED. IT SHALL BE THE CONTRACTOR'S RESPONSIBILITY TO ASCERTAIN THEIR EXACT LOCATION FROM THE UTILITY COMPANIES AND BY FIELD INSPECTION.

$e_x = 0.52'$   
 $k = 115$   
220.00' V.C.

CROWN/P.G.L. TRANSITION, STATION 1148+19.00 TO STATION 1151+22.03. SEE PAVEMENT GRADING PLANS, PAVEMENT MARKING PLANS, TYPICAL SECTIONS, AND CROSS SECTIONS FOR ADDITIONAL INFORMATION.

STA. 1151+22.03  
ELEVATION 653.41

115.00' EL. 651.85

156.00' EL. 649.01

76.00' EL. 646.67

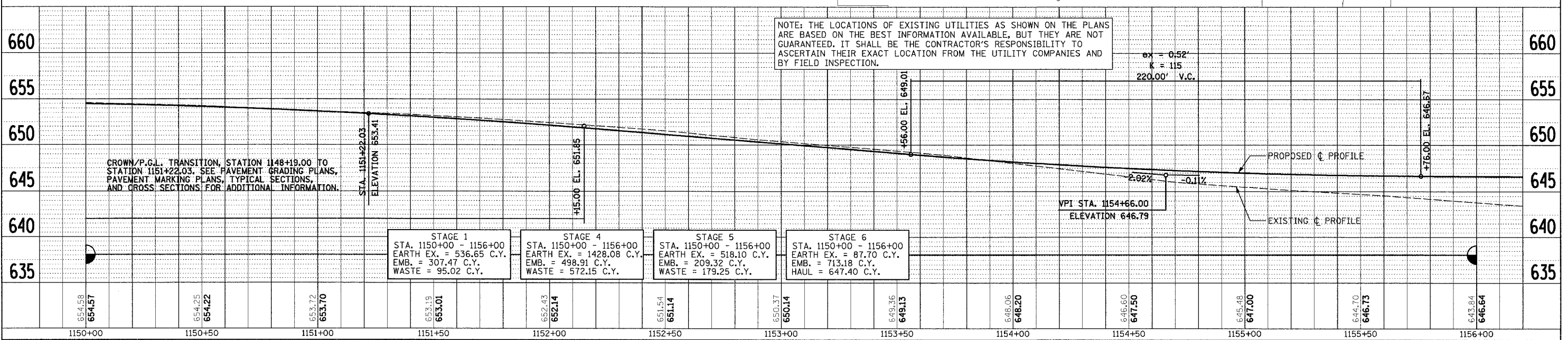
VPI STA. 1154+66.00  
ELEVATION 646.79

STAGE 1  
STA. 1150+00 - 1156+00  
EARTH EX. = 536.65 C.Y.  
EMB. = 307.47 C.Y.  
WASTE = 95.02 C.Y.

STAGE 4  
STA. 1150+00 - 1156+00  
EARTH EX. = 1428.08 C.Y.  
EMB. = 498.91 C.Y.  
WASTE = 572.15 C.Y.

STAGE 5  
STA. 1150+00 - 1156+00  
EARTH EX. = 518.10 C.Y.  
EMB. = 209.32 C.Y.  
WASTE = 179.25 C.Y.

STAGE 6  
STA. 1150+00 - 1156+00  
EARTH EX. = 87.70 C.Y.  
EMB. = 713.18 C.Y.  
HAUL = 647.40 C.Y.



PLAN AND PROFILE (US RTE 30)

DATE	BY	REVISION
		1. CHECKED
		2. PLOTTED
		3. ALIGNED
		4. FILED
		5. DATE FILED

DATE	BY	REVISION
		1. CHECKED
		2. PLOTTED
		3. ALIGNED
		4. FILED
		5. DATE FILED

DATE-TIME:  
JOB-SPEC:  
REF  
REF  
REF