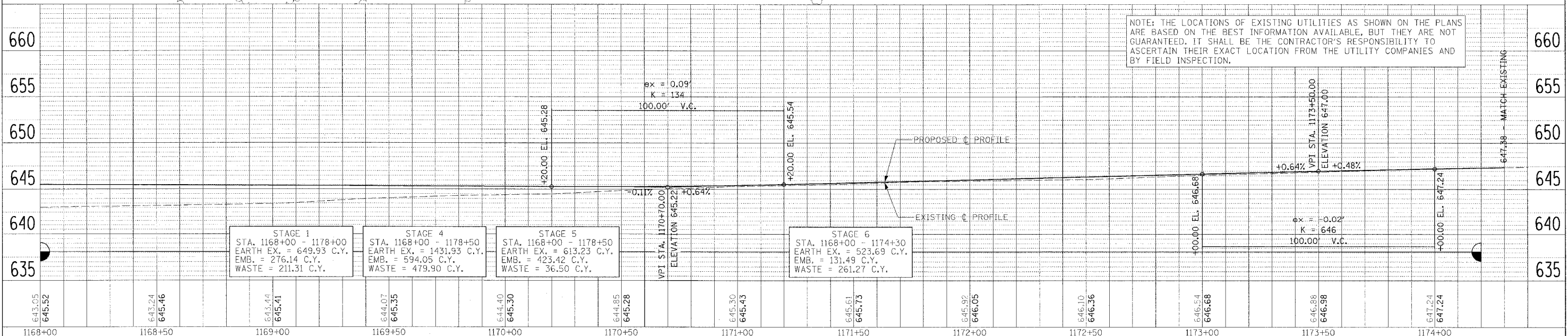
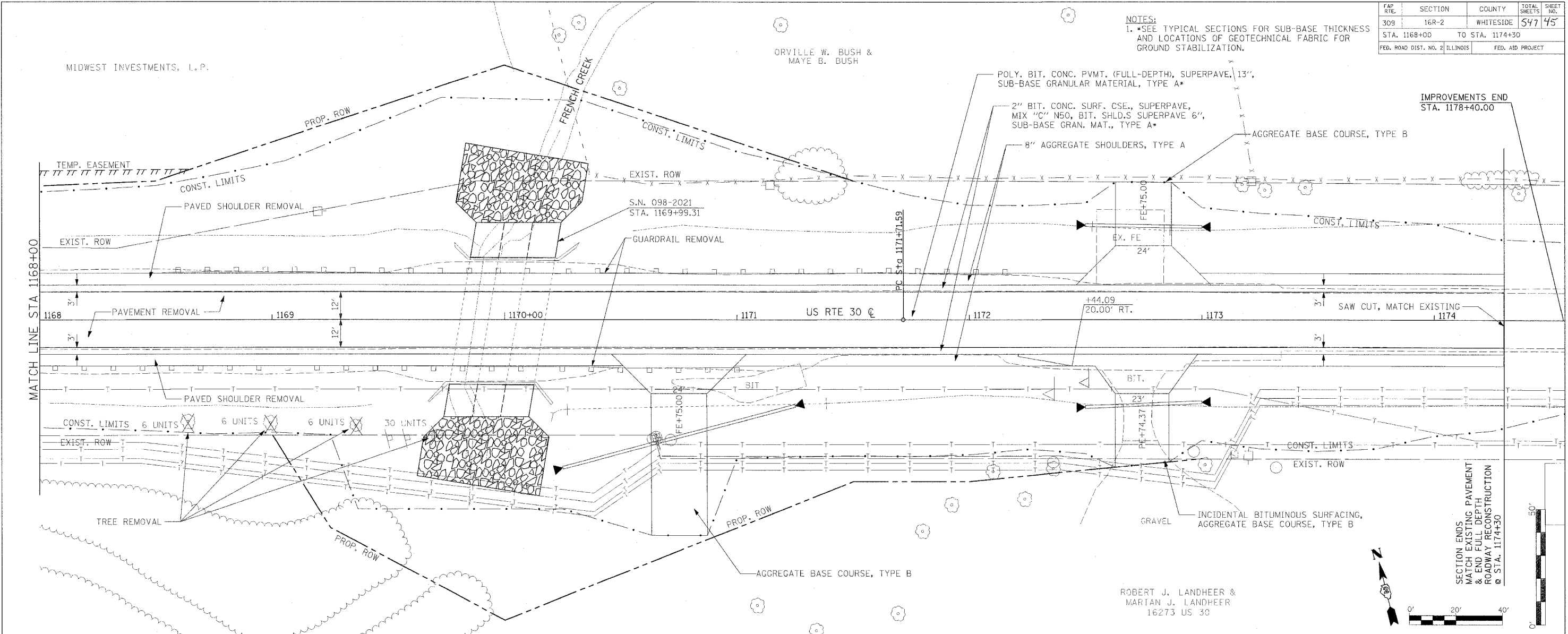


FAP RTE.	SECTION	COUNTY	TOTAL SHEETS	SHEET NO.
309	16R-2	WHITESIDE	547	45
STA. 1168+00		TO STA. 1174+30		
FED. ROAD DIST. NO. 2 ILLINOIS		FED. AID PROJECT		

NOTES:
 1. SEE TYPICAL SECTIONS FOR SUB-BASE THICKNESS AND LOCATIONS OF GEOTECHNICAL FABRIC FOR GROUND STABILIZATION.



NOTE: THE LOCATIONS OF EXISTING UTILITIES AS SHOWN ON THE PLANS ARE BASED ON THE BEST INFORMATION AVAILABLE, BUT THEY ARE NOT GUARANTEED. IT SHALL BE THE CONTRACTOR'S RESPONSIBILITY TO ASCERTAIN THEIR EXACT LOCATION FROM THE UTILITY COMPANIES AND BY FIELD INSPECTION.

PLAN AND PROFILE (US RTE 30)

PLAN

DATE	BY
REVISION	BY
DATE	BY
DATE	BY
DATE	BY

NOTE: ROAD DISTRICT NO. 2 ILLINOIS

PROFILE

DATE	BY
REVISION	BY
DATE	BY
DATE	BY
DATE	BY

NOTE: ROAD DISTRICT NO. 2 ILLINOIS

DATE TIME*
 CON-SECT
 REF
 REF
 REF

12/16/2008 12:05:31 PM