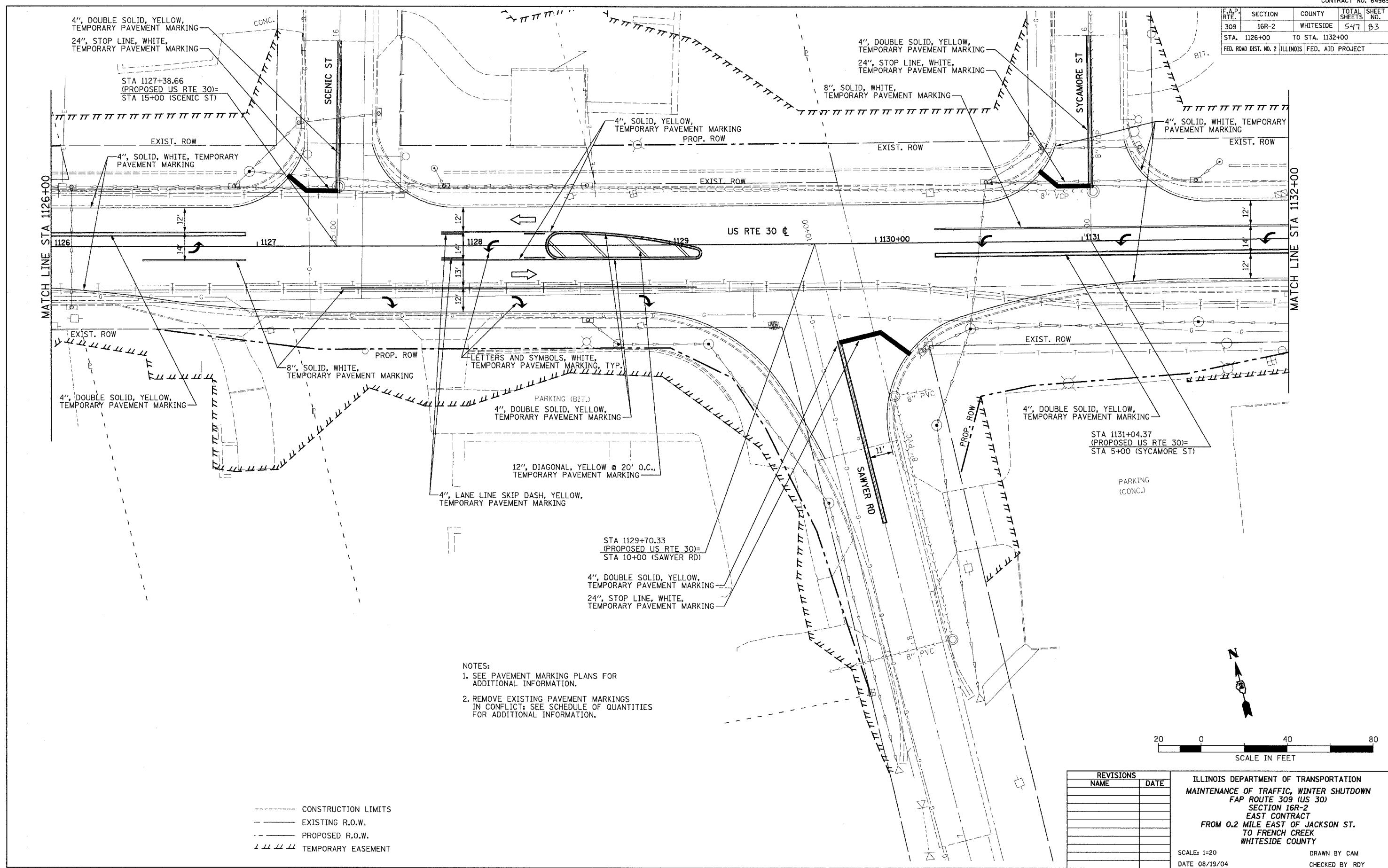
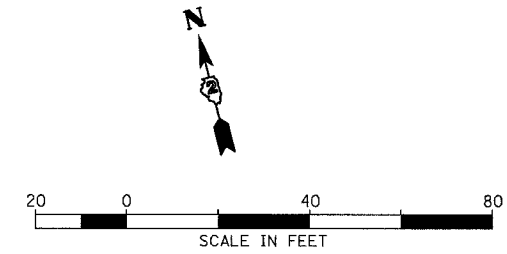


F.A.P. RTE.	SECTION	COUNTY	TOTAL SHEETS	SHEET NO.
309	16R-2	WHITESIDE	547	83
STA. 1126+00		TO STA. 1132+00		
FED. ROAD DIST. NO. 2 ILLINOIS FED. AID PROJECT				



- NOTES:
1. SEE PAVEMENT MARKING PLANS FOR ADDITIONAL INFORMATION.
 2. REMOVE EXISTING PAVEMENT MARKINGS IN CONFLICT; SEE SCHEDULE OF QUANTITIES FOR ADDITIONAL INFORMATION.

- CONSTRUCTION LIMITS
- EXISTING R.O.W.
- PROPOSED R.O.W.
- ||||| TEMPORARY EASEMENT



REVISIONS	
NAME	DATE

ILLINOIS DEPARTMENT OF TRANSPORTATION
 MAINTENANCE OF TRAFFIC, WINTER SHUTDOWN
 FAP ROUTE 309 (US 30)
 SECTION 16R-2
 EAST CONTRACT
 FROM 0.2 MILE EAST OF JACKSON ST.
 TO FRENCH CREEK
 WHITESIDE COUNTY

SCALE: 1=20
 DATE 08/19/04
 DRAWN BY CAM
 CHECKED BY RDY