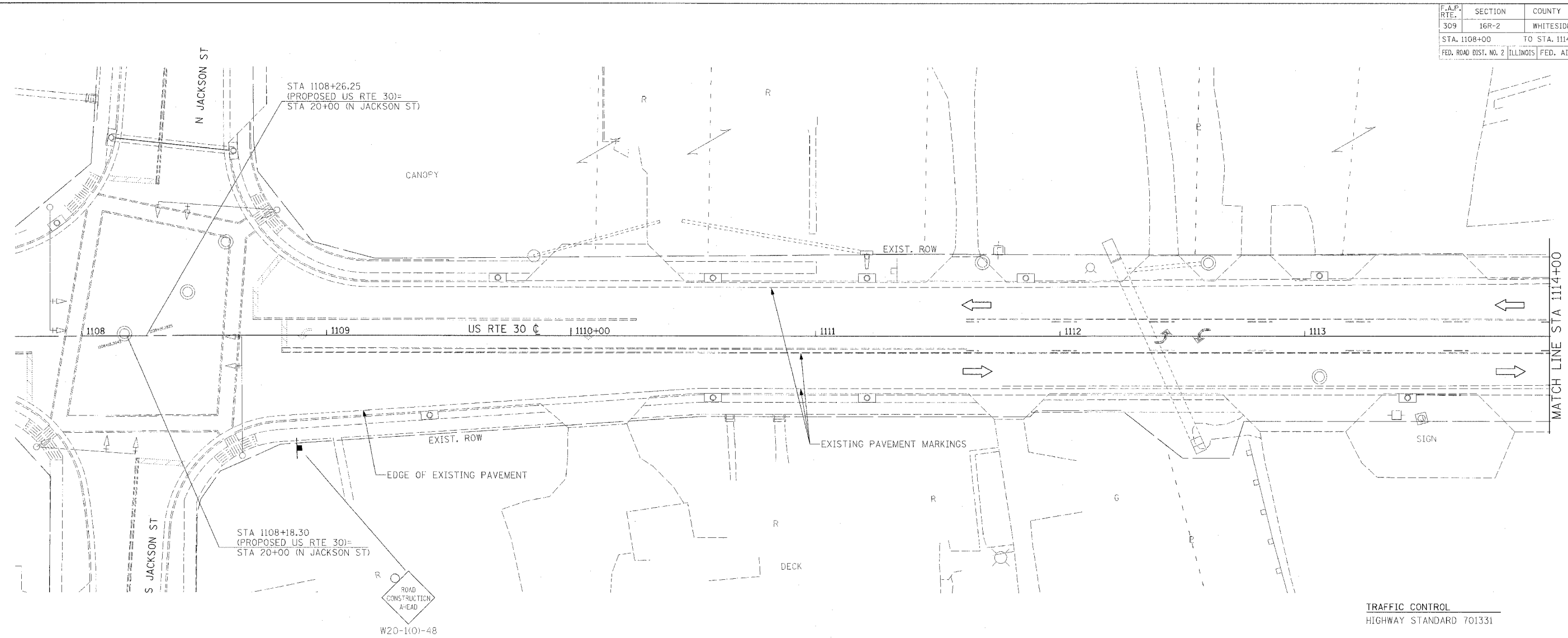


F.A.P. RTE.	SECTION	COUNTY	TOTAL SHEETS	SHEET NO.
309	16R-2	WHITESIDE	547	100
STA. 1108+00		TO STA. 1114+00		
FED. ROAD DIST. NO. 2 ILLINOIS FED. AID PROJECT				



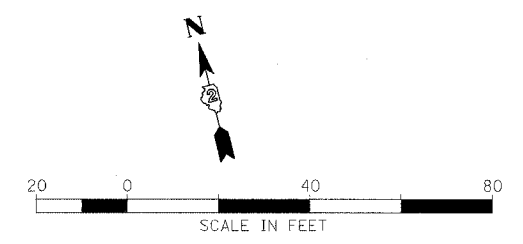
TRAFFIC CONTROL
HIGHWAY STANDARD 701331

- CONSTRUCTION LIMITS
- EXISTING R.O.W.
- PROPOSED R.O.W.
- ||||| TEMPORARY EASEMENT

- NOTES:
- THIS TRAFFIC CONTROL AND PROTECTION SHALL BE SET UP AND PAID FOR ACCORDING TO STANDARD 701331.
 - TEMPORARY TRAFFIC CONTROL SIGNS SHALL BE FURNISHED AND PLACED ACCORDING TO STANDARD 701331.
 - SEE PLAN AND PROFILE SHEETS FOR REMOVAL ITEMS.
 - ACCESS TO DRIVEWAYS AND ENTRANCES TO BE MAINTAINED AT ALL TIMES.
 - SEE PLAN AND PROFILE SHEETS AND COMMITMENTS FOR EXISTING FACILITIES TO BE MAINTAINED.
 - REMOVE EXISTING PAVEMENT MARKINGS IN CONFLICT: SEE SCHEDULE OF QUANTITIES FOR ADDITIONAL INFORMATION.
 - ALL TEMPORARY PAVEMENT MARKINGS FOR STAGES 2, 3, 4 AND 5, INCLUDING EDGE LINES, CENTER LINES, LANE LINES, TAPERS, MEDIAN DIAGONALS, STOP BARS, LETTERS & SYMBOLS, AND ANY OTHER TEMPORARY MARKINGS AS REQUIRED BY THE ENGINEER, AND THEIR REMOVAL SHALL BE INCLUDED IN THE COST OF TRAFFIC CONTROL AND PROTECTION, STANDARD 701331. THIS WORK SHALL BE PERFORMED ACCORDING TO SECTIONS 701 AND 703 OF THE STANDARD SPECIFICATIONS AND AS DIRECTED BY THE ENGINEER.

MAINTENANCE OF TRAFFIC LEGEND

	TRAFFIC FLOW DIRECTION		EX TEMPORARY CONCRETE BARRIER OR TEMPORARY CONCRETE BARRIER
	LANE(S) CLOSED		VERTICAL PANEL
	ARROW BOARD		BARRICADE TYPE I OR TYPE II OR DRUM
	DRUM WITH STEADY BURNING MONODIRECTIONAL LIGHT		SIGN
	TYPE III BARRICADE WITH FLASHING LIGHT		CONSTRUCTION SPEED LIMIT SIGN
	TYPE III BARRICADE		FLAGGER WITH TRAFFIC CONTROL SIGN
			BARRICADE OR DRUM WITH STEADY BURNING MONODIRECTIONAL LIGHT
			BARRICADE OR DRUM WITH FLASHING LIGHT



REVISIONS	
NAME	DATE

ILLINOIS DEPARTMENT OF TRANSPORTATION
MAINTENANCE OF TRAFFIC, STAGE 5
 FAP ROUTE 309 (US 30)
 SECTION 16R-2, EAST CONTRACT
 FROM 0.2 MILE EAST OF JACKSON ST.
 TO FRENCH CREEK
 WHITESIDE COUNTY

SCALE: 1=20
DATE 06/19/04

DRAWN BY CAM
CHECKED BY RDY