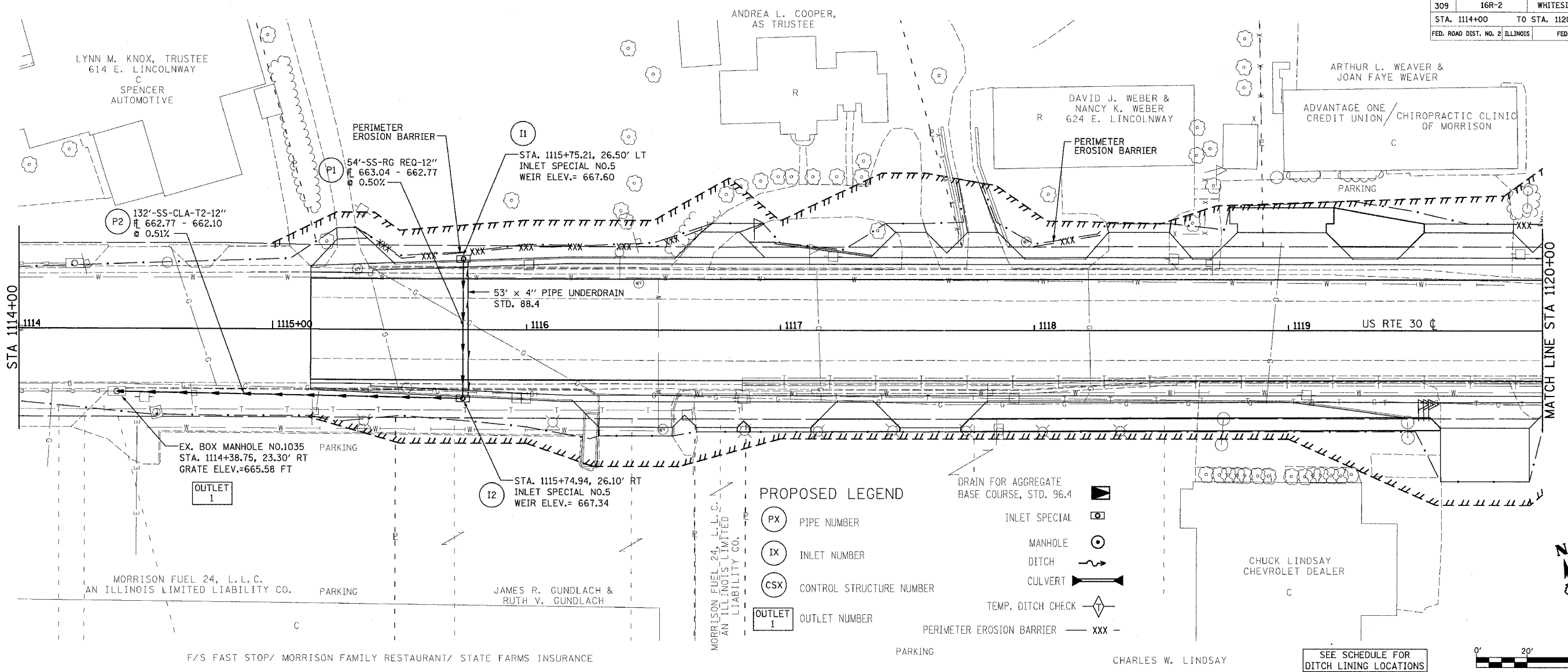


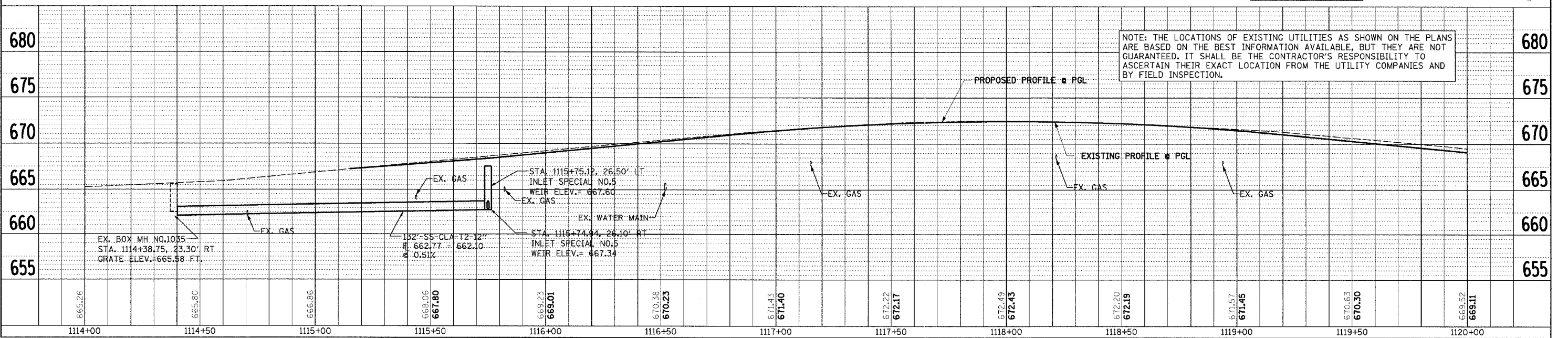
F.A.P. R.T.E.	SECTION	COUNTY	TOTAL SHEETS	SHEET NO.
309	16R-2	WHITESIDE	547	118
STA. 1114+00		TO STA. 1120+00		
FED. ROAD DIST. NO. 2 ILLINOIS		FED. AID PROJECT		



PROPOSED LEGEND

- PX PIPE NUMBER
- IX INLET NUMBER
- CSX CONTROL STRUCTURE NUMBER
- OUTLET I OUTLET NUMBER
- INLET SPECIAL
- MANHOLE
- DITCH
- CULVERT
- TEMP. DITCH CHECK
- PERIMETER EROSION BARRIER
- DRAIN FOR AGGREGATE BASE COURSE, STD. 96.4

NOTE: THE LOCATIONS OF EXISTING UTILITIES AS SHOWN ON THE PLANS ARE BASED ON THE BEST INFORMATION AVAILABLE, BUT THEY ARE NOT GUARANTEED. IT SHALL BE THE CONTRACTOR'S RESPONSIBILITY TO ASCERTAIN THEIR EXACT LOCATION FROM THE UTILITY COMPANIES AND BY FIELD INSPECTION.



DRAINAGE AND EROSION CONTROL PLANS (US RTE 30)

PLAN

DATE	BY

REVISIONS

NO.	DATE	DESCRIPTION

PROFILE

DATE	BY

REVISIONS

NO.	DATE	DESCRIPTION

OTHERS

DATE	BY