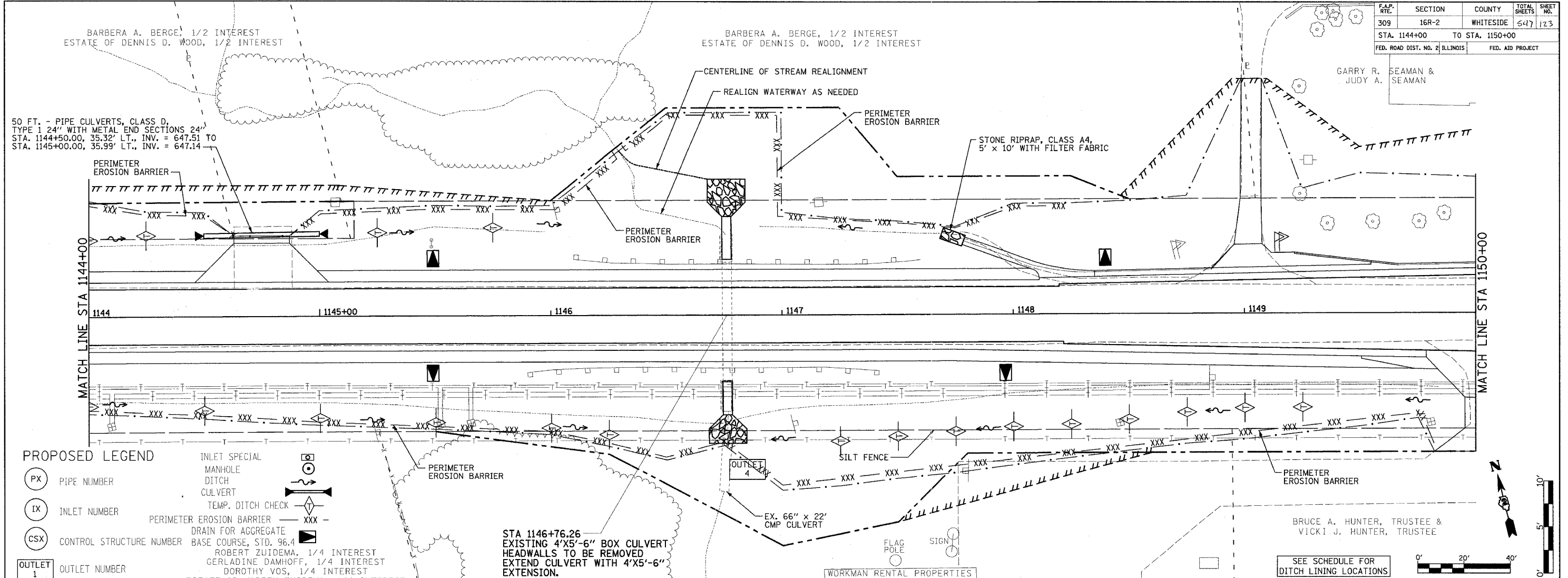
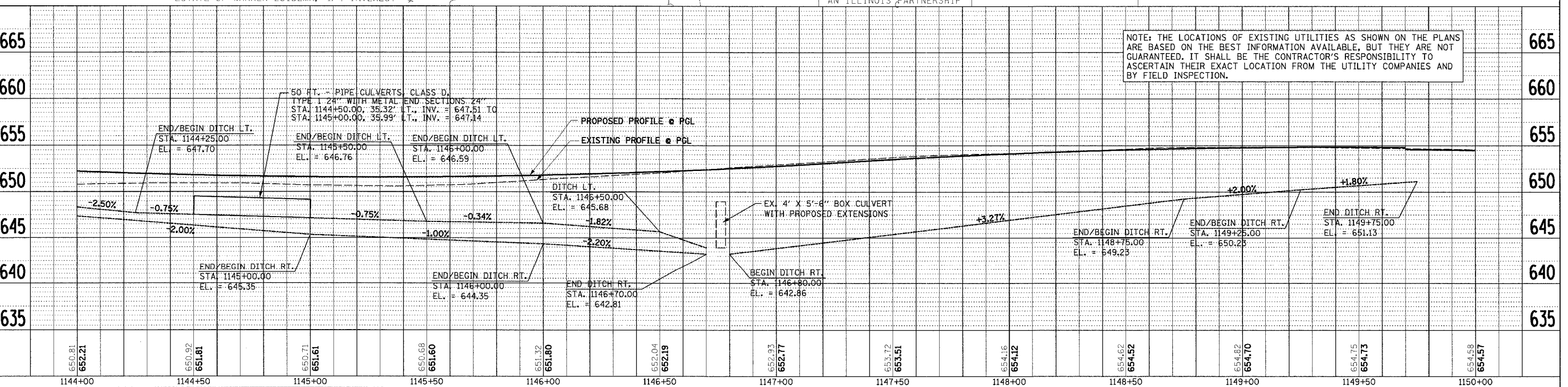


F.A.P. RTE.	SECTION	COUNTY	TOTAL SHEETS	SHEET NO.
309	16R-2	WHITESIDE	647	123
STA. 1144+00		TO STA. 1150+00		
FED. ROAD DIST. NO. 2 ILLINOIS		FED. AID PROJECT		



- PROPOSED LEGEND**
- PX PIPE NUMBER
 - IX INLET NUMBER
 - CSX CONTROL STRUCTURE NUMBER
 - OUTLET 1 OUTLET NUMBER
 - INLET SPECIAL MANHOLE DITCH CULVERT
 - TEMP. DITCH CHECK
 - PERIMETER EROSION BARRIER
 - DRAIN FOR AGGREGATE BASE COURSE, STD. 96.4
 - ROBERT ZUIDEMA, 1/4 INTEREST
 - GERLADINE DAMHOFF, 1/4 INTEREST
 - DOROTHY VOS, 1/4 INTEREST
 - ESTATE OF WARREN ZUIDEMA, 1/4 INTEREST



NOTE: THE LOCATIONS OF EXISTING UTILITIES AS SHOWN ON THE PLANS ARE BASED ON THE BEST INFORMATION AVAILABLE, BUT THEY ARE NOT GUARANTEED. IT SHALL BE THE CONTRACTOR'S RESPONSIBILITY TO ASCERTAIN THEIR EXACT LOCATION FROM THE UTILITY COMPANIES AND BY FIELD INSPECTION.

DATE: _____ BY: _____

REVISIONS:

NO.	DATE	BY	DESCRIPTION

PLAN NO. _____

DATE: _____ BY: _____

REVISIONS:

NO.	DATE	BY	DESCRIPTION

PROFILE NO. _____

DATE: _____ BY: _____

REVISIONS:

NO.	DATE	BY	DESCRIPTION

TIME: _____

DRAINAGE AND EROSION CONTROL PLANS (US RTE 30)