

MIDWEST INVESTMENTS, L.P.

ORVILLE W. BUSH & MAYE B. BUSH

PROPOSED LEGEND

- (PX) PIPE NUMBER
- (IX) INLET NUMBER
- (CSX) CONTROL STRUCTURE NUMBER
- OUTLET 1 OUTLET NUMBER
- INLET SPECIAL
- MANHOLE
- DITCH
- CULVERT
- TEMP. DITCH CHECK
- PERIMETER EROSION BARRIER
- DITCH, LT
- DITCH, RT
- DRAIN FOR AGGREGATE BASE COURSE, STD. 96.4

F.A.P. RITE.	SECTION	COUNTY	TOTAL SHEETS	SHEET NO.
309	16R-2	WHITESIDE	547	137
STA. 1168+00 TO STA. 1174+50				
FED. ROAD DIST. NO. 2 ILLINOIS		FED. AID PROJECT		

STA 1169+99.31
EXISTING 12'X8' TRIPLE BOX CULVERT
HEADWALLS TO BE REMOVED &
EXTEND CULVERT.

SEE SCHEDULE FOR
DITCH LINING LOCATIONS

50 FT. - PIPE CULVERTS, CLASS D,
TYPE 1 1/2" WITH METAL END SECTIONS 15"
STA. 1172+50.00, 40.87' LT., INV. = 640.87 TO
STA. 1173+00.00, 40.14' LT., INV. = 641.37

50 FT. - PIPE CULVERTS, CLASS D,
TYPE 1 1/2" WITH METAL END SECTIONS 15"
STA. 1172+50.00, 37.85' RT., INV. = 641.96 TO
STA. 1173+00.00, 35.76' RT., INV. = 642.39

104 FT. - PIPE CULVERTS, CLASS D,
TYPE 1 1/2" WITH METAL END SECTIONS 15"
STA. 1170+25.00, 64.00' RT., INV. = 635.00 TO
STA. 1171+25.00, 37.28' RT., INV. = 640.90

STONE RIPRAP, CLASS A4,
20' x 6' WITH FILTER FABRIC

ROBERT J. LANDHEER &
MARIAN J. LANDHEER
16273 US 30

PLAN

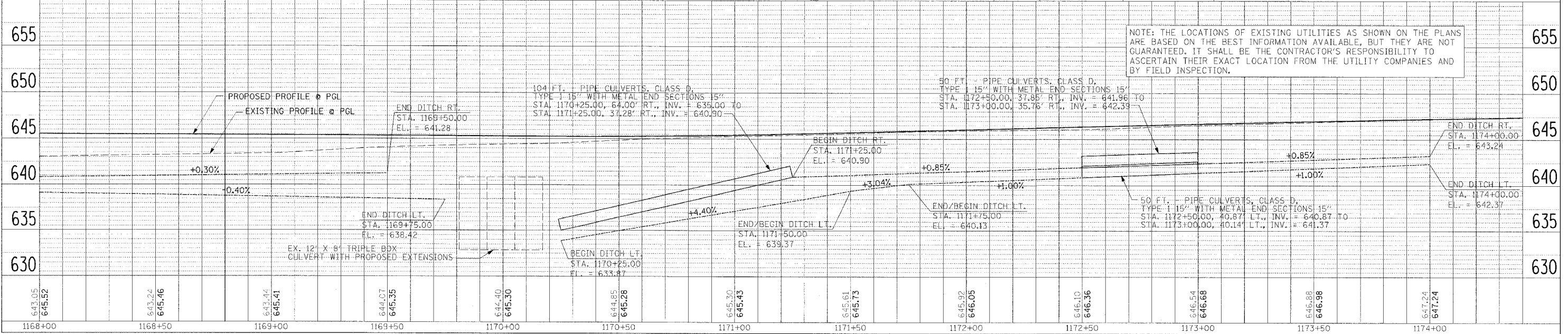
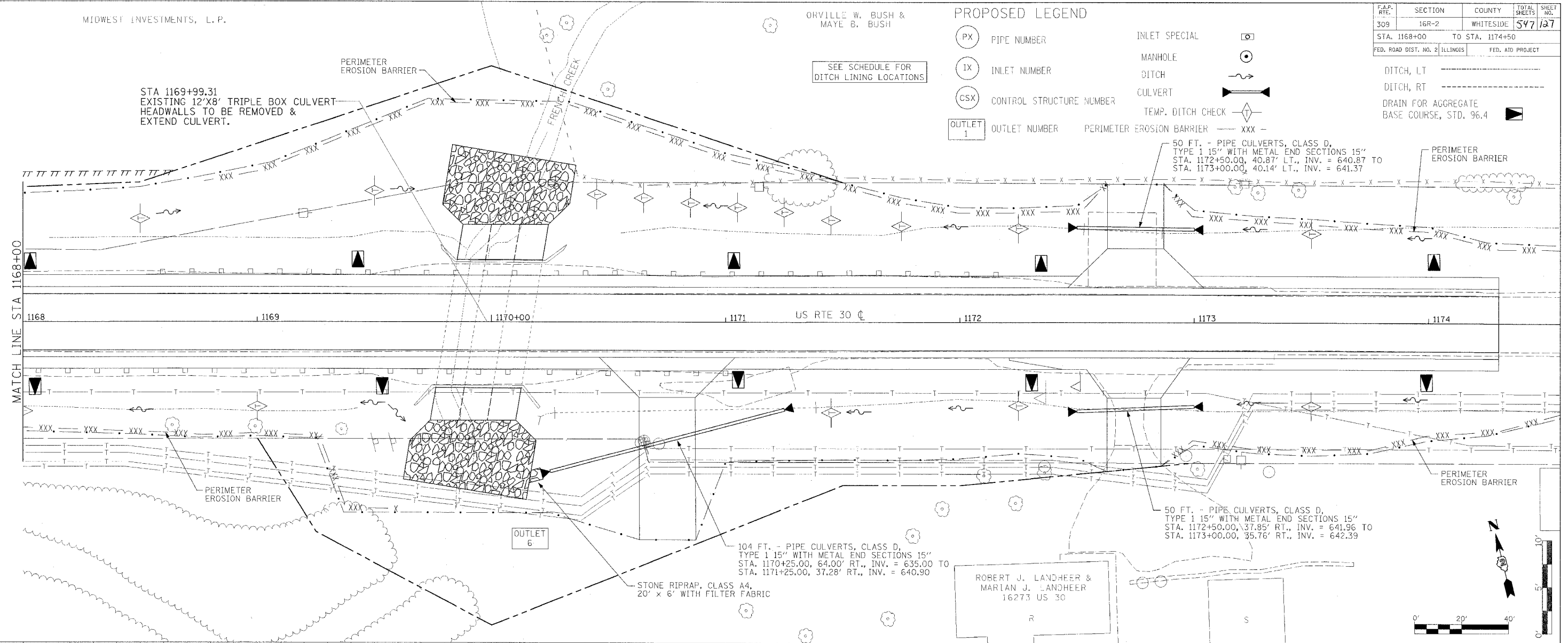
DATE	BY	REVISION

NOTES:
1. ALL DIMENSIONS UNLESS OTHERWISE SPECIFIED ARE IN FEET AND INCHES.
2. ALL STRUCTURES SHALL BE CONSTRUCTED TO MEET THE REQUIREMENTS OF THE ILLINOIS HIGHWAY DESIGN MANUAL.
3. THE CONTRACTOR SHALL BE RESPONSIBLE FOR OBTAINING ALL NECESSARY PERMITS AND UTILITIES INFORMATION.

PROFILE

DATE	BY	REVISION

NOTES:
1. ALL DIMENSIONS UNLESS OTHERWISE SPECIFIED ARE IN FEET AND INCHES.
2. THE CONTRACTOR SHALL BE RESPONSIBLE FOR OBTAINING ALL NECESSARY PERMITS AND UTILITIES INFORMATION.



DRAINAGE AND EROSION CONTROL PLANS (US RTE 30)

NOTES:
1. ALL DIMENSIONS UNLESS OTHERWISE SPECIFIED ARE IN FEET AND INCHES.
2. THE CONTRACTOR SHALL BE RESPONSIBLE FOR OBTAINING ALL NECESSARY PERMITS AND UTILITIES INFORMATION.

12/25/2015 12:35:38 PM