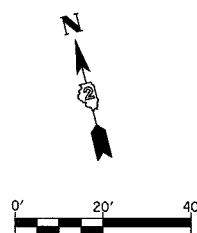
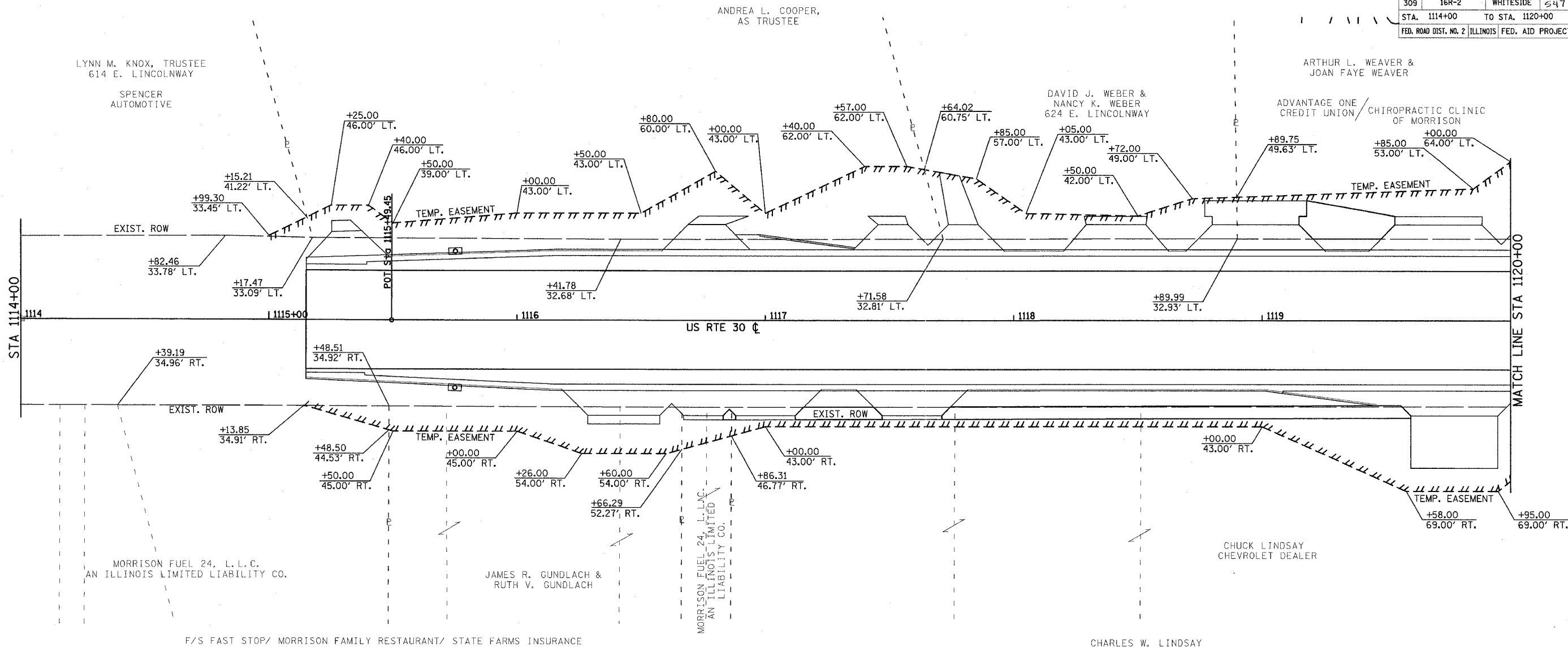


F.A.P. RTE.	SECTION	COUNTY	TOTAL SHEETS	SHEET NO.
309	16R-2	WHITESIDE	547	132
STA. 1114+00		TO STA. 1120+00		
FED. ROAD DIST. NO. 2 ILLINOIS FED. AID PROJECT				



REVISIONS	
NAME	DATE

ILLINOIS DEPARTMENT OF TRANSPORTATION
 RIGHT OF WAY
 AND EASEMENT PLAN
 FAP ROUTE 309 (US 30)
 SECTION 16R-2
 EAST CONTRACT
 FROM 0.2 MILE EAST OF JACKSON ST.
 TO FRENCH CREEK
 WHITESIDE COUNTY

SCALE: 1"=20'
 DATE: _____ DRAWN BY: _____
 CHECKED BY: _____