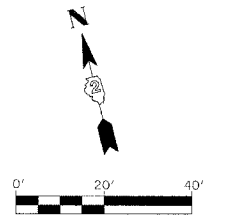
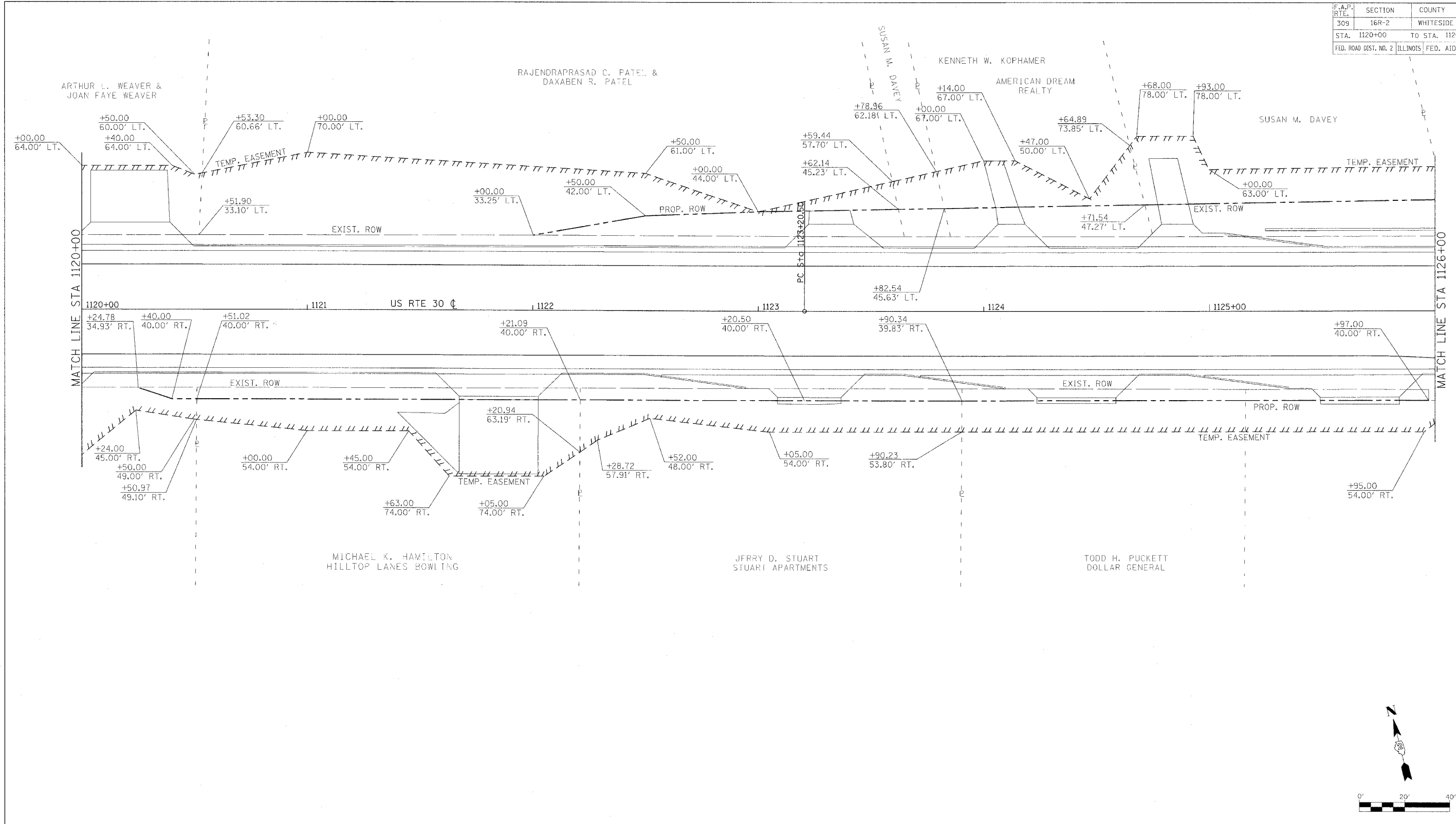


F.A.P. RTE.	SECTION	COUNTY	TOTAL SHEETS	SHEET NO.
309	16R-2	WHITESIDE	577	133
STA. 1120+00		TO STA. 1126+00		
FED. ROAD DIST. NO. 2		ILLINOIS	FED. AID PROJECT	



REVISIONS	
NAME	DATE

ILLINOIS DEPARTMENT OF TRANSPORTATION  
 RIGHT OF WAY AND  
 EASEMENT PLAN  
 FAP ROUTE 309 (US 30)  
 SECTION 16R-2  
 EAST CONTRACT  
 FROM 0.2 MILE EAST OF JACKSON ST.  
 TO FRENCH CREEK  
 WHITESIDE COUNTY

SCALE: 1=20  
 DATE \_\_\_\_\_  
 DRAWN BY \_\_\_\_\_  
 CHECKED BY \_\_\_\_\_