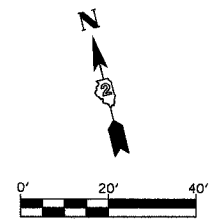
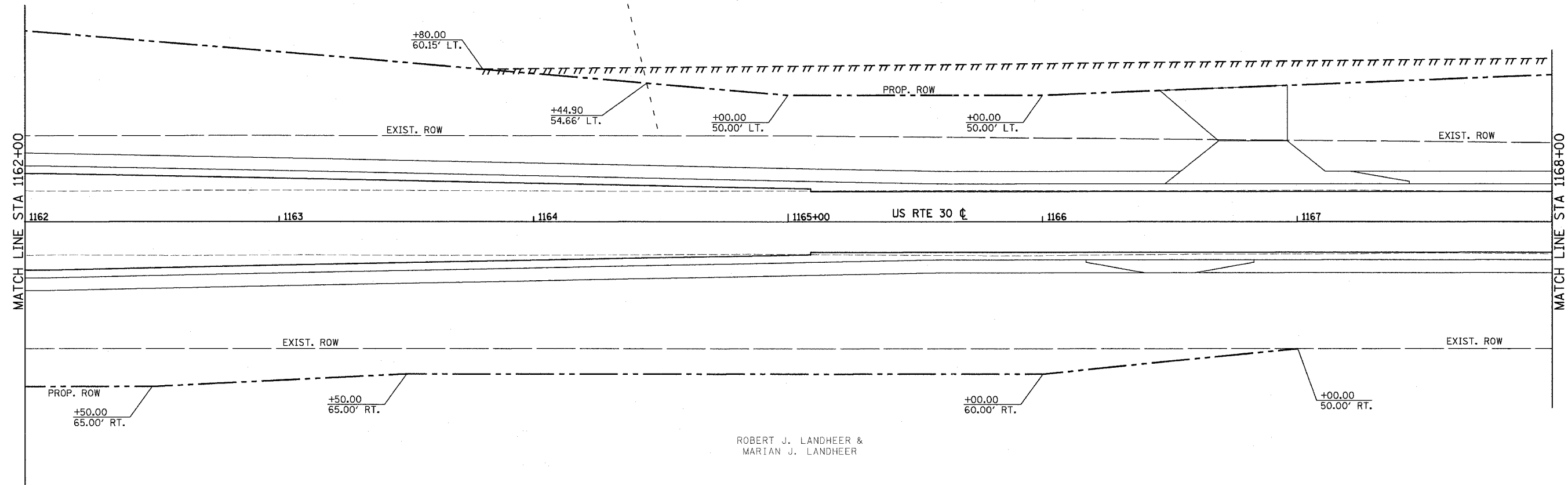


F.A.P. RTE.	SECTION	COUNTY	TOTAL SHEETS	SHEET NO.
309	16R-2	WHITESIDE	547	140
STA. 1162+00		TO STA. 1168+00		
FED. ROAD DIST. NO. 2 ILLINOIS FED. AID PROJECT				

YOUNG ENTERPRISES,
AN ILLINOIS PARTNERSHIP

JBKM INC.

MIDWEST INVESTMENTS, L.P.



REVISIONS	
NAME	DATE

ILLINOIS DEPARTMENT OF TRANSPORTATION
 RIGHT OF WAY AND
 EASEMENT PLAN
 FAP ROUTE 309 (US 30)
 SECTION 16R-2
 EAST CONTRACT
 FROM 0.2 MILE EAST OF JACKSON ST.
 TO FRENCH CREEK, WHITESIDE COUNTY

SCALE: 1=20
 DATE

DRAWN BY
 CHECKED BY