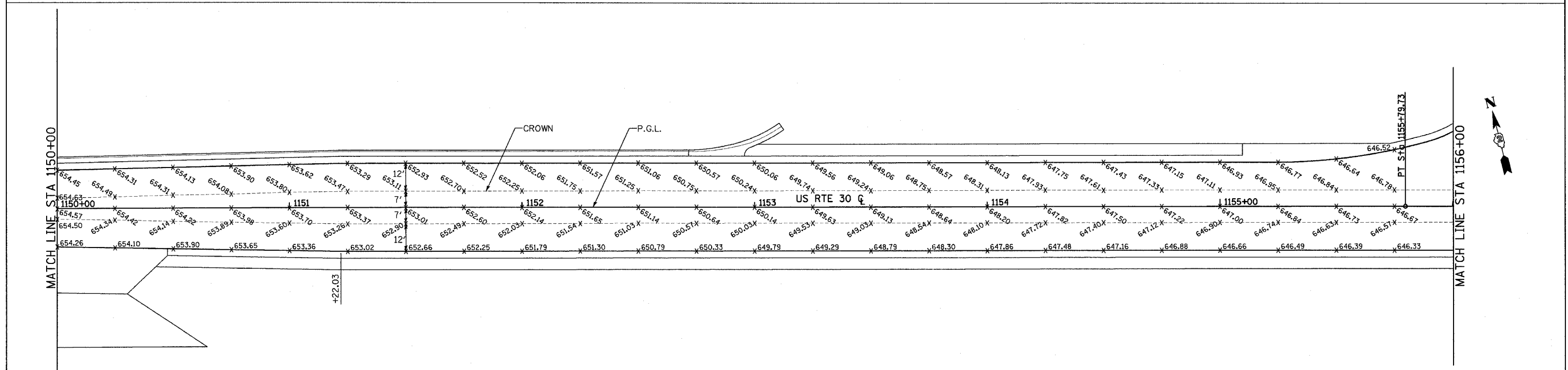
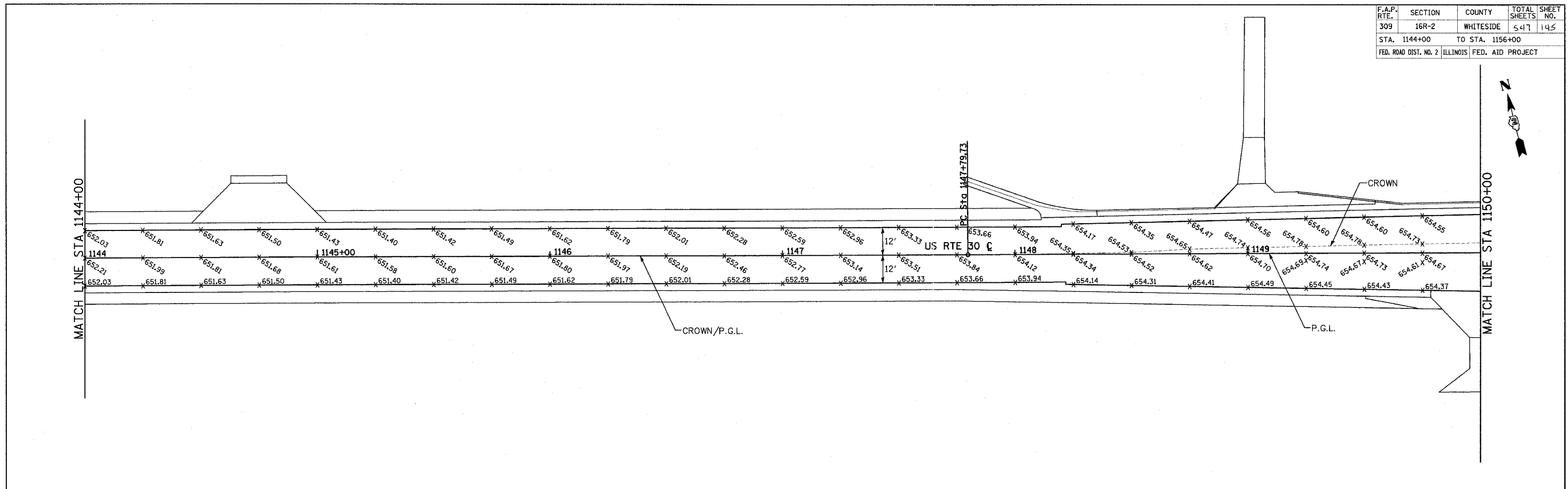
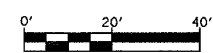


F.A.P. RTE.	SECTION	COUNTY	TOTAL SHEETS	SHEET NO.
309	16R-2	WHITESIDE	547	145
STA. 1144+00		TO STA. 1156+00		
FED. ROAD DIST. NO. 2		ILLINOIS FED. AID PROJECT		



NOTES:

- ELEVATION SHOWN AT 25 FT. SPACES, TYPICAL.
- CROWN VARIES FROM CENTERLINE OF F.A.P. 309 (U.S. 30) TO LEFT EDGE OF MEDIAN/TURN LANE, STA. 1148+72.00 TO 1151+72.03.
- SEE PAVEMENT MARKING PLANS FOR ADDITIONAL INFORMATION.



REVISIONS	
NAME	DATE

ILLINOIS DEPARTMENT OF TRANSPORTATION
 PAVEMENT GRADING PLAN
 FAP ROUTE 309 (US 30)
 SECTION 16R-2
 EAST CONTRACT
 FROM 0.2 MILE EAST OF JACKSON ST.
 TO FRENCH CREEK, WHITESIDE COUNTY

SCALE: 1"=20'
 DATE 10/13/05
 DRAWN BY BRD
 CHECKED BY RBY