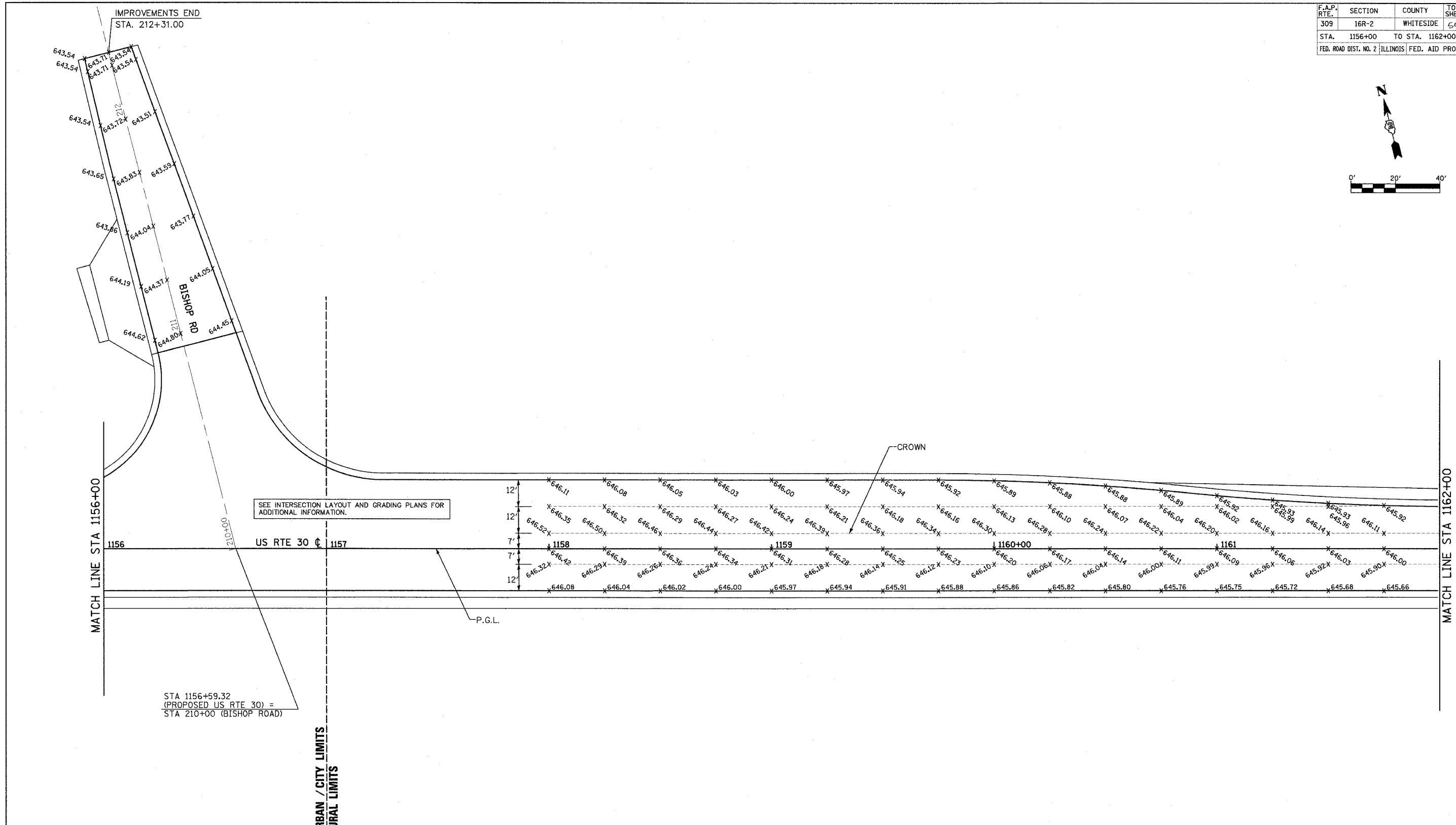
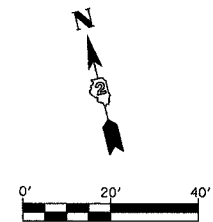


F.A.P. RTE.	SECTION	COUNTY	TOTAL SHEETS	SHEET NO.
309	16R-2	WHITESIDE	547	146
STA. 1156+00 TO STA. 1162+00				
FED. ROAD DIST. NO. 2		ILLINOIS	FED. AID PROJECT	



SEE INTERSECTION LAYOUT AND GRADING PLANS FOR ADDITIONAL INFORMATION.

STA 1156+59.32
(PROPOSED US RTE 30) =
STA 210+00 (BISHOP ROAD)

URBAN / CITY LIMITS
RURAL LIMITS

- NOTES:**
- ELEVATION SHOWN AT 25 FT. SPACES, TYPICAL.
 - SEE INTERSECTION LAYOUT AND GRADING PLANS FOR ADDITIONAL INFORMATION.
 - SEE PAVEMENT MARKING PLANS FOR ADDITIONAL INFORMATION.

REVISIONS	
NAME	DATE

ILLINOIS DEPARTMENT OF TRANSPORTATION
 PAVEMENT GRADING PLAN
 FAP ROUTE 309 (US 30)
 SECTION 16R-2
 EAST CONTRACT
 FROM 0.2 MILE EAST OF JACKSON ST.
 TO FRENCH CREEK, WHITESIDE COUNTY

SCALE: 1"=20'
 DATE 10/13/05

DRAWN BY BRD
 CHECKED BY RDY