

F.A.P. RTE.	SECTION	COUNTY	TOTAL SHEETS	SHEET NO.
309	16R-2	WHITESIDE	547	148
STA. 1126+00		TO STA. 1128+50		
FED. ROAD DIST. NO. 2		ILLINOIS	FED. AID PROJECT	

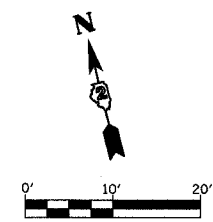
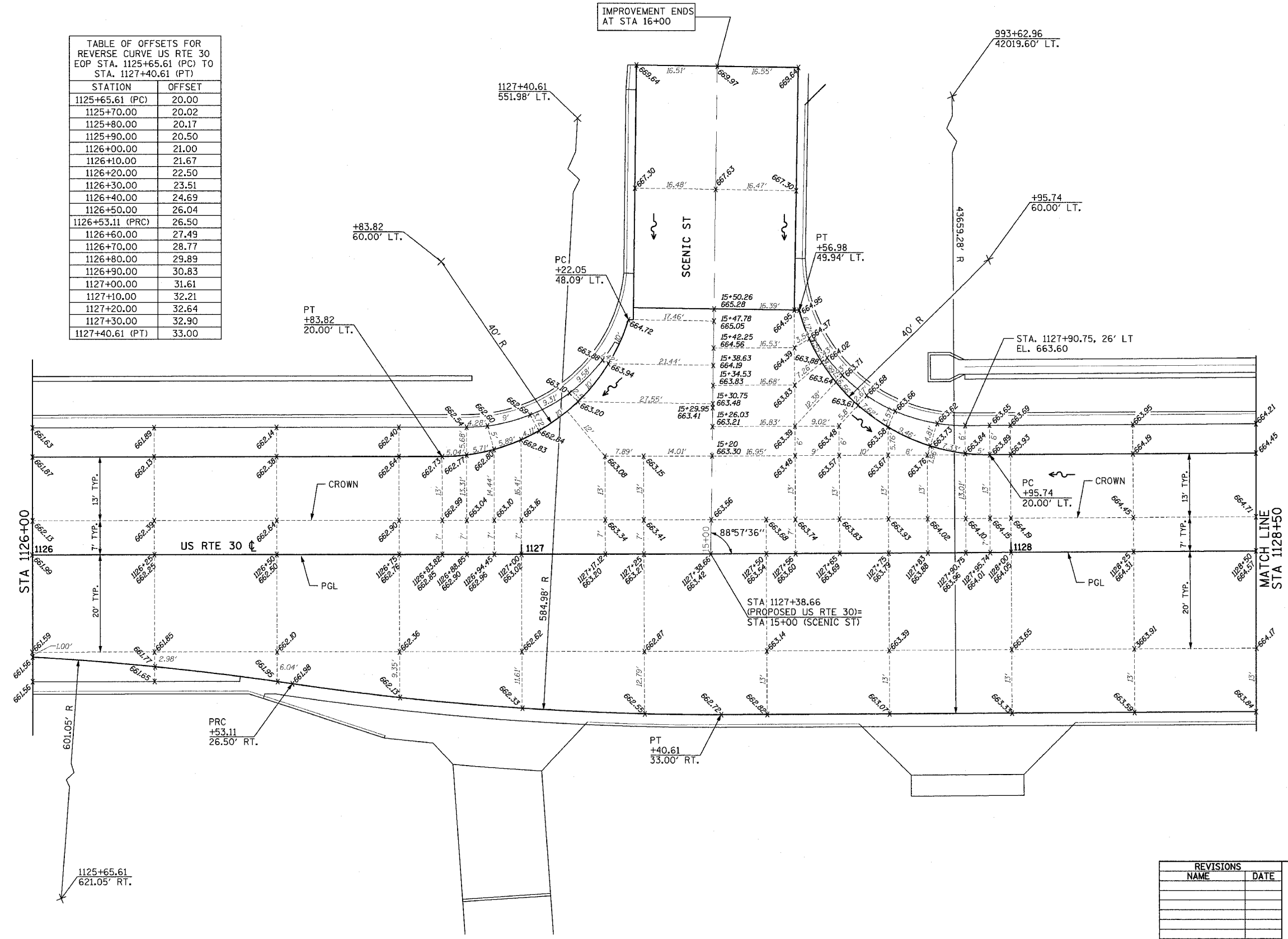


TABLE OF OFFSETS FOR REVERSE CURVE US RTE 30 EOP STA. 1125+65.61 (PC) TO STA. 1127+40.61 (PT)

STATION	OFFSET
1125+65.61 (PC)	20.00
1125+70.00	20.02
1125+80.00	20.17
1125+90.00	20.50
1126+00.00	21.00
1126+10.00	21.67
1126+20.00	22.50
1126+30.00	23.51
1126+40.00	24.69
1126+50.00	26.04
1126+53.11 (PRC)	26.50
1126+60.00	27.49
1126+70.00	28.77
1126+80.00	29.89
1126+90.00	30.83
1127+00.00	31.61
1127+10.00	32.21
1127+20.00	32.64
1127+30.00	32.90
1127+40.61 (PT)	33.00



NOTES:

1. SEE PLAN AND PROFILE SHEETS FOR ADDITIONAL LAYOUT INFORMATION.
2. SEE LINE DIAGRAM PLANS FOR HORIZONTAL CURVE INFORMATION.

REVISIONS	
NAME	DATE

ILLINOIS DEPARTMENT OF TRANSPORTATION  
 INTERSECTION LAYOUT & GRADING PLAN  
 US RTE 30 AND SCENIC ST.  
 FAP ROUTE 309 (US 30) SECTION 16R-2  
 EAST CONTRACT  
 FROM 0.2 MILE EAST OF JACKSON ST.  
 TO FRENCH CREEK, WHITESIDE COUNTY

SCALE: 1=10  
 DATE 07/20/05  
 DRAWN BY MCM  
 CHECKED BY RDY