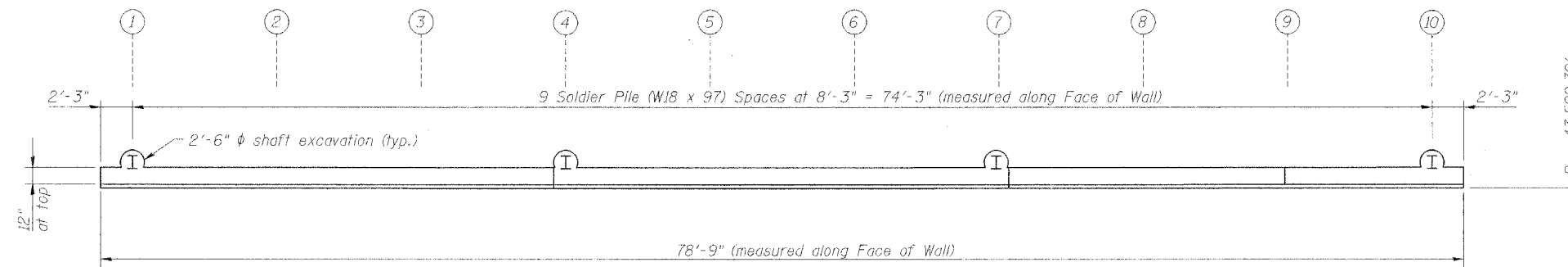
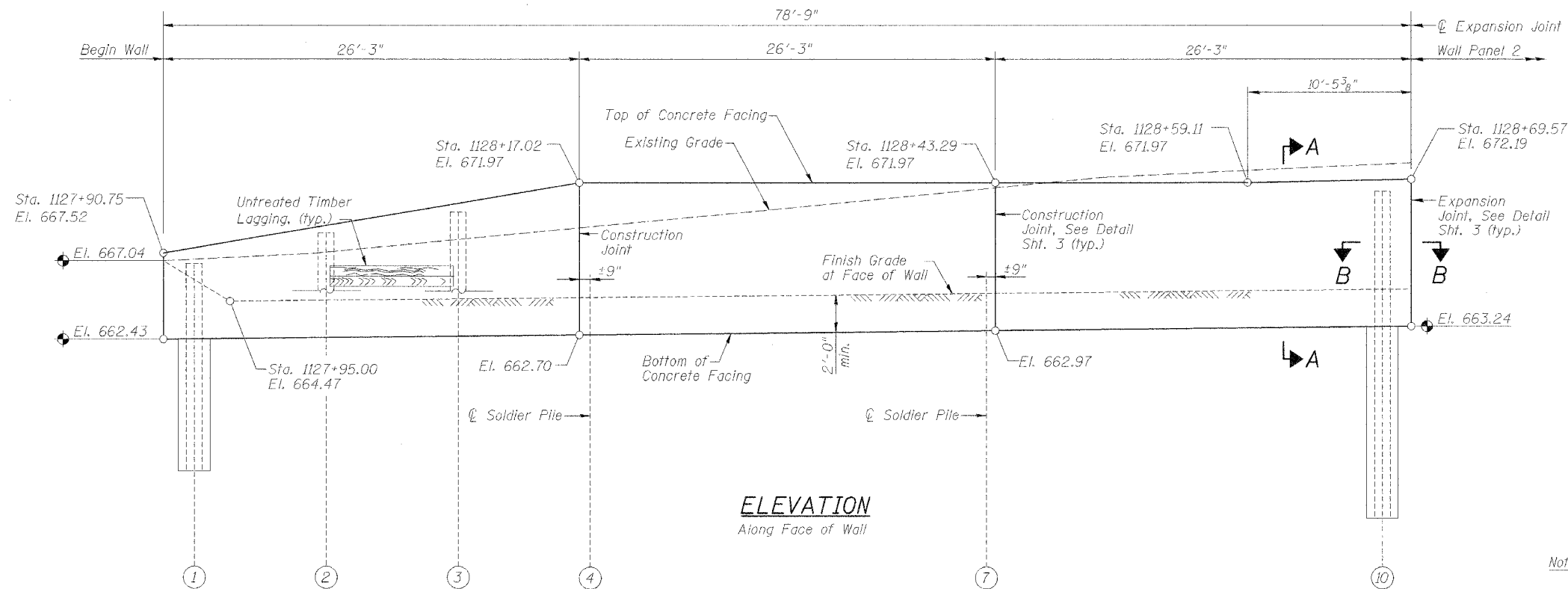


STATE OF ILLINOIS  
DEPARTMENT OF TRANSPORTATION

ROUTE NO.	SECTION	COUNTY	INCHES	SHEET NO.	SHEET NO. 4
F.A.P. 309	16R-2	WHITESIDE	547	162	13 SHEETS
FED. ROAD DIST. NO. 4	ILLINOIS	FED. AID PROJECT			

Contract No. 64969



- Notes:
1. See Sht. 2 for Section A-A.
  2. See Sht. 3 for Section B-B & Pile Summary.
  3. See Sht. 8 for Reinforcement.

DESIGNED	LLV
CHECKED	P.J.L.
DRAWN	MGM
CHECKED	LLV

SOLDIER PILE WALL PANEL 1  
RETAINING WALL NO. 1  
U.S. RTE. 30 (LINCOLN HIGHWAY)  
BETWEEN SCENIC ST. & SYCAMORE ST.  
F.A.P. ROUTE 309 SECTION 16 R-2  
WHITESIDE COUNTY  
STA. 1127+90.75 TO  
STA. 1130+75.26 (LT.)  
STRUCTURE NO. 098-7001

**STS CONSULTANTS**  
111 NE Jefferson Ave.  
Peoria, Illinois 61602  
Ph(309)676-8464  
FAX(309)676-5445  
IL Design Firm Reg. No. 184-001518

DATE PLOTTED: 12/20/2005 10:13:26 AM