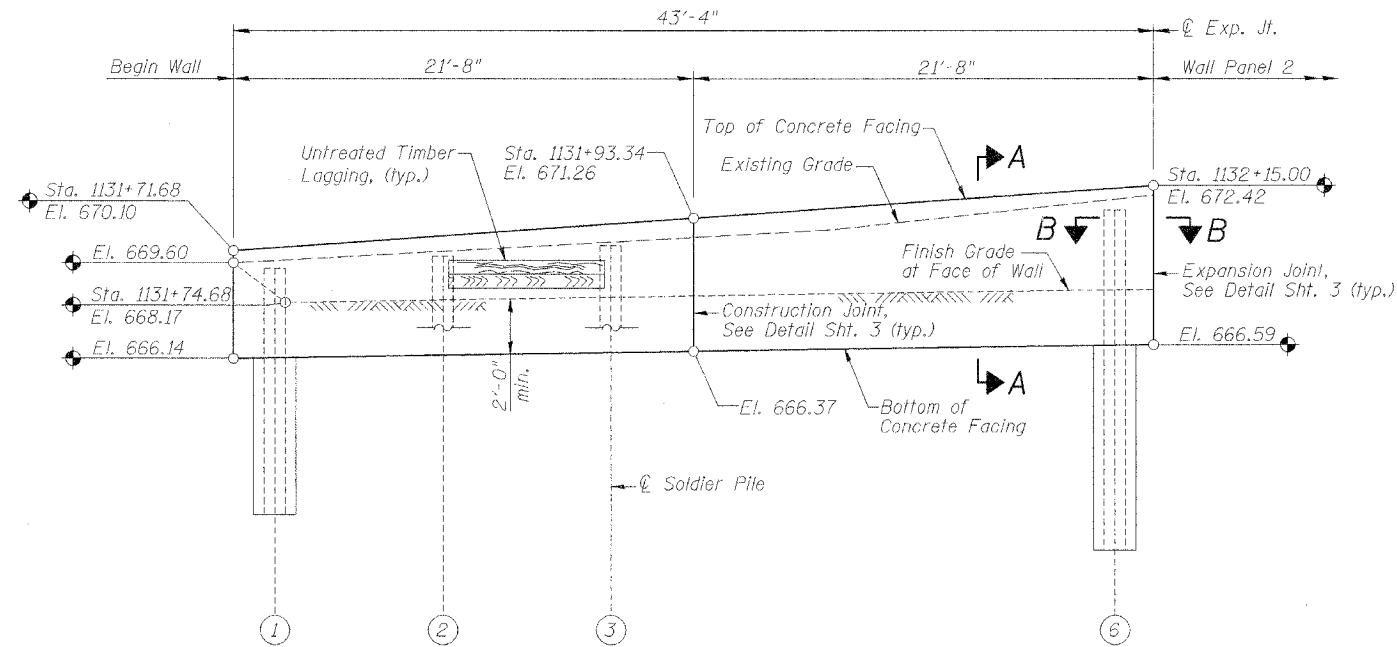


STATE OF ILLINOIS
DEPARTMENT OF TRANSPORTATION

ROUTE NO.	SECTION	COUNTY	SHEET NO.	SHEET TOTAL	SHEET NO. 4
F.A.P. 309	16R-2	WHITESIDE	547	175	11 SHEETS
FED. ROAD DIST. NO. 4	ILLINOIS	FED. AID PROJECT			

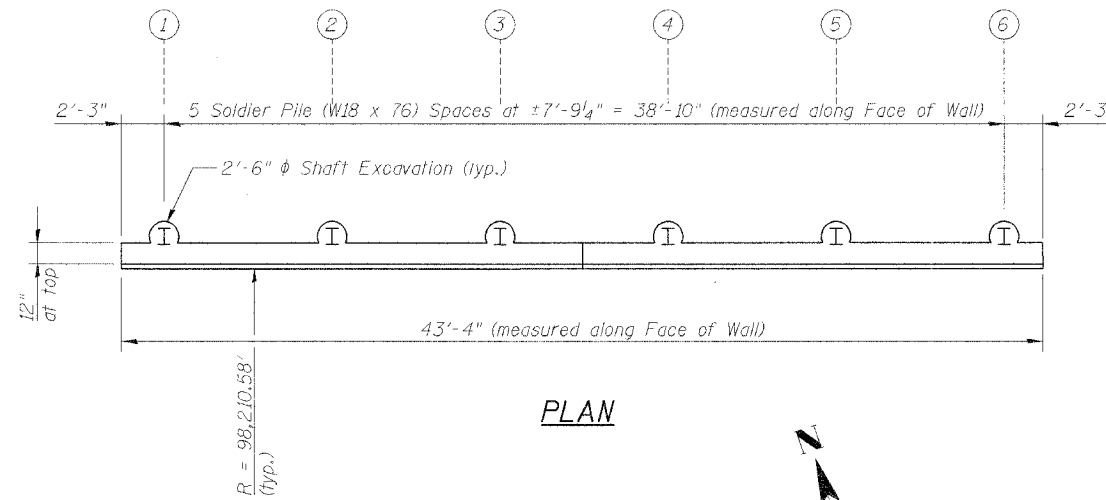
Contract No. 64969



ELEVATION
Along Face of Wall

Notes:

1. See Sht. 2 for Section A-A.
2. See Sht. 3 for Section B-B and Pile Summary.
3. See Sht. 7 for Reinforcement.



PLAN

DESIGNED	LLV
CHECKED	PJL
DRAWN	MGM
CHECKED	LLV

SOLDIER PILE WALL PANEL 1
RETAINING WALL NO. 2
U.S. RTE. 30 (LINCOLN HIGHWAY)
EAST OF SYCAMORE ST.
F.A.P. ROUTE 309 SECTION 16 R-2
WHITESIDE COUNTY
STA. 1131+71.68 TO
STA. 1133+44.95 (LT.)
STRUCTURE NO. 098-7002

STS CONSULTANTS
111 NE Jefferson Ave.
Peoria, Illinois 61602
Ph(309)676-8464
FAX(309)676-5445
IL Design Firm Reg. No. 184-001518