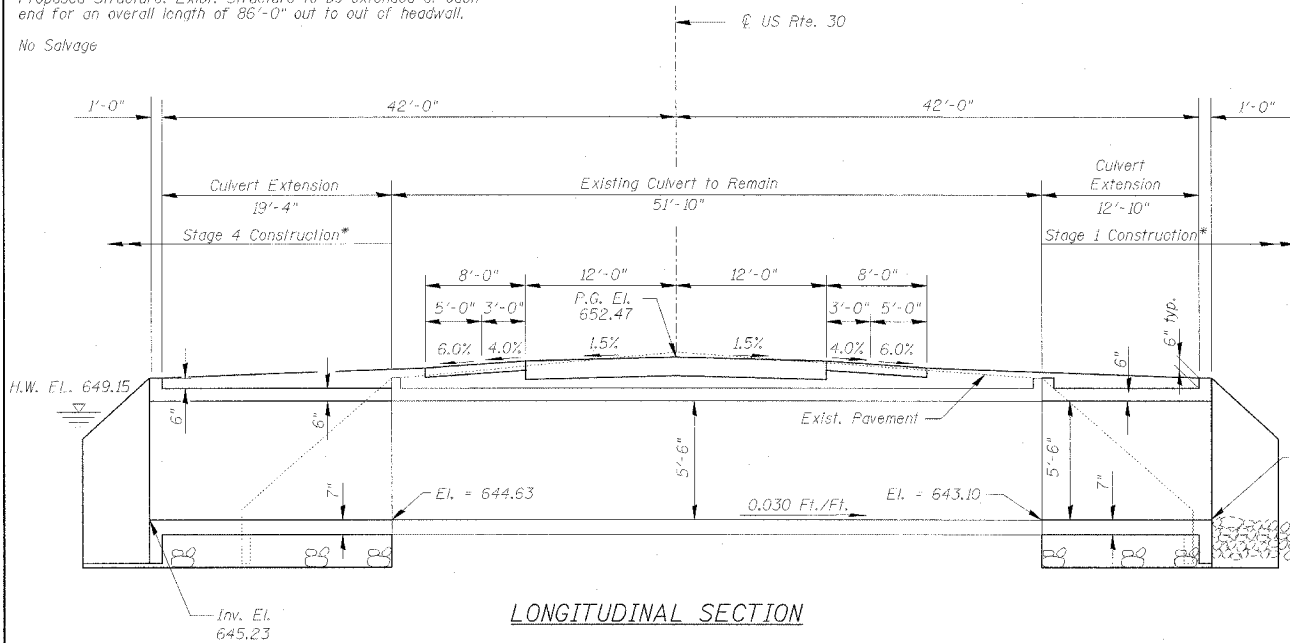


STATE OF ILLINOIS  
DEPARTMENT OF TRANSPORTATION

ROUTE NO.	SECTION	COUNTY	SHEETS	SHEET NO.
F.A.P. 309	16R-2	WHITESIDE	641	183
FED. ROAD DIST. NO. 6	ILL. ROAD DIST. NO. 1	FED. AID PROJECT		

SHEET NO. 1  
5 SHEETS

Benchmark: Chisled square on top of Northeast wingwall of Structure 098-2025, Sta. 1158+20.0592 Lt., El. = 640.488.  
Existing Structure: The existing structure constructed around 1953 is a concrete 4'-0" x 5'-6" single box culvert.  
Proposed Structure: Exist. Structure to be extended at each end for an overall length of 86'-0" out to out of headwall.  
No Salvage



LONGITUDINAL SECTION

(Horizontal Dimensions at Rt. Angles to  $\hat{C}$  Roadway)

\* Refer to Roadway Maintenance of Traffic Plans for traffic staging details

INDEX OF SHEETS

1. General Plan
2. Culvert Details
3. Culvert and Wingwall Details
4. Boring Logs

LOADING HS20-44  
Allow 50 #/sq. ft. for future wearing surface new extensions only

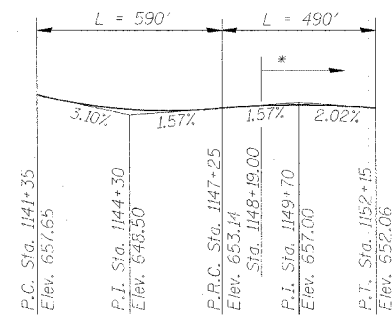
DESIGN SPECIFICATIONS

2002 AASHTO "Standard Specifications for Highway Bridges"

DESIGN STRESSES

FIELD UNITS

$f'_c = 3,500$  psi  
 $f_y = 60,000$  psi (reinforcement)



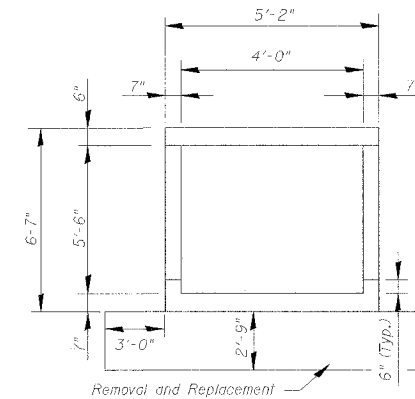
PROFILE GRADE US RTE 30

(along  $\hat{C}$  roadway)

\* Crown /PGL transition. See plan and profile sheets for additional information.

GENERAL NOTES

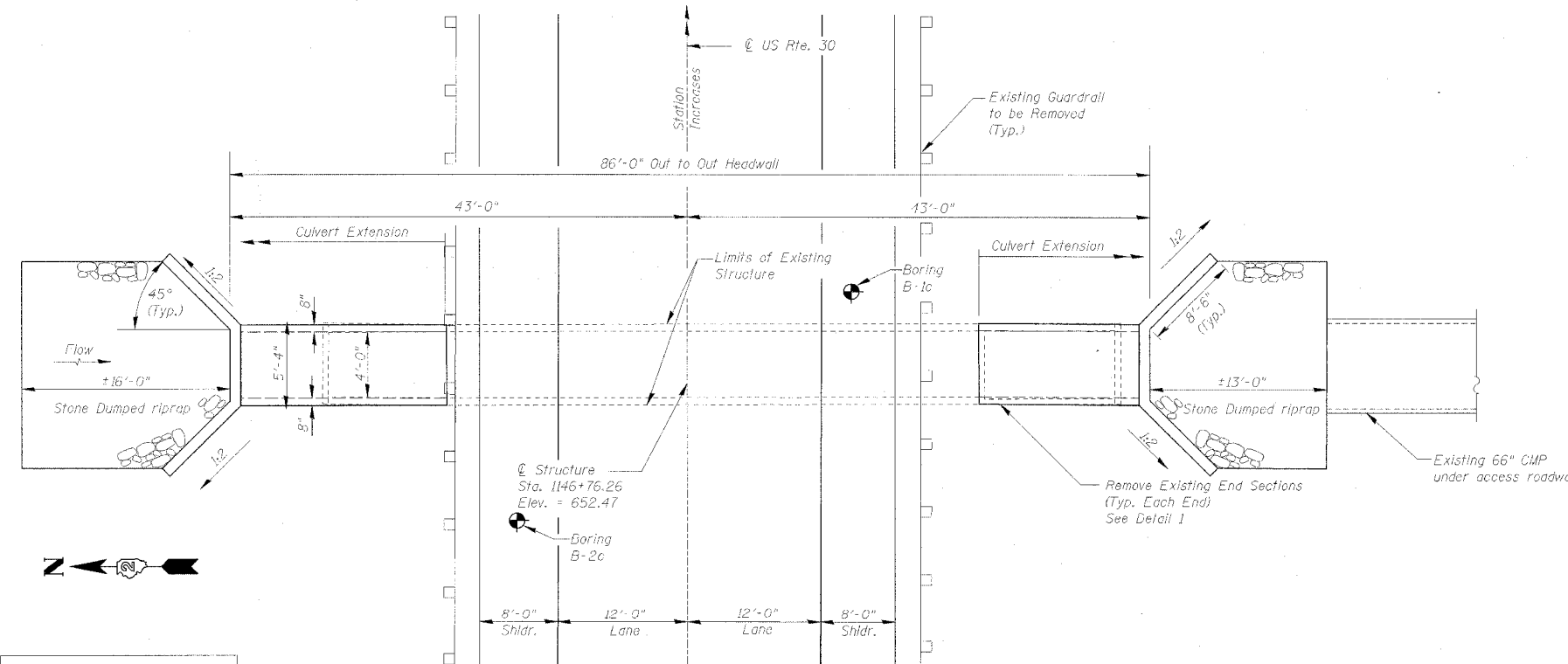
Precast alternate is not allowed.  
Exposed edges shall be beveled  $\frac{3}{4}$ ", unless otherwise noted.  
For backfilling and embankment see Standard Specifications.  
At least 7' of the barrel shall be poured monolithically with wingwall.  
Reinforcement bars shall conform to the requirements of AASHTO M-31, M-42 or M-53 Grade 60.  
Layout of slope protection system may be varied in the field to suit ground conditions as directed by the Engineer.  
Expansion bolts shall consist of approved expansion anchors, providing minimum certified proof load = 4,080 lbs., and  $\frac{3}{4}$ "  $\phi$  x 12" hooked bolts.



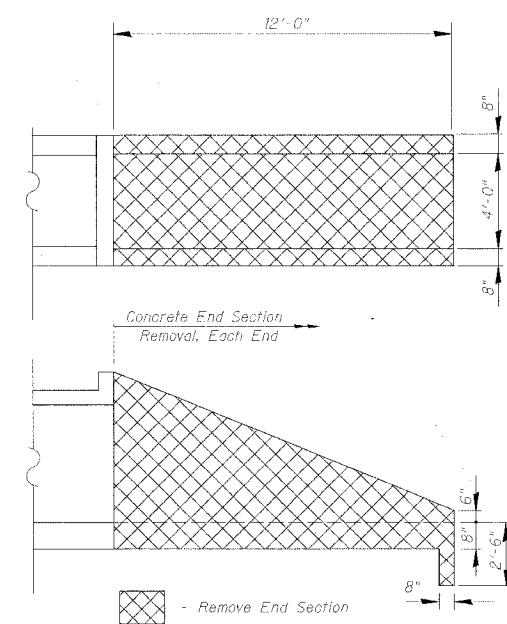
SECTION THRU BARREL

TOTAL BILL OF MATERIAL

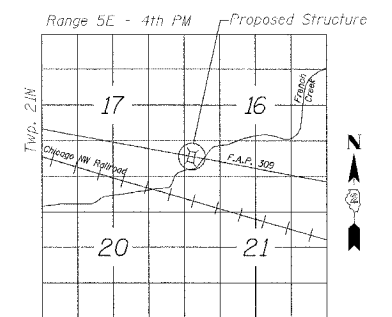
ITEM	UNIT	TOTAL
Concrete Box Culverts	Cu. Yd.	24.7
Reinforcement Bars	Pound	3,336
Expansion Bolts $\frac{3}{4}$ "	Each	38
Breaker Run Crushed Stone	Ton	75
Stone Dumped Riprap Class A4	Sq. Yd.	46
Remove Concrete Box Culvert End Section	Each	2
Remove and Dispose of Unsuitable Material	Cu. Yd.	37



PLAN



DETAIL 1



LOCATION SKETCH

GENERAL PLAN  
US RTE. 30 - CATTLE PASS  
F.A.P. ROUTE 309 SECT. 16 BR-1  
WHITESIDE COUNTY  
STATION 1146+76.26

DESIGNED	GEK
CHECKED	LSA
DRAWN	GEK
CHECKED	LSA



111 W. Washington St., Suite 1750  
Chicago, IL 60602  
Ph.(312)628-3886  
Fax(312)628-3892  
IL Design Firm Registration  
No. 184-001518