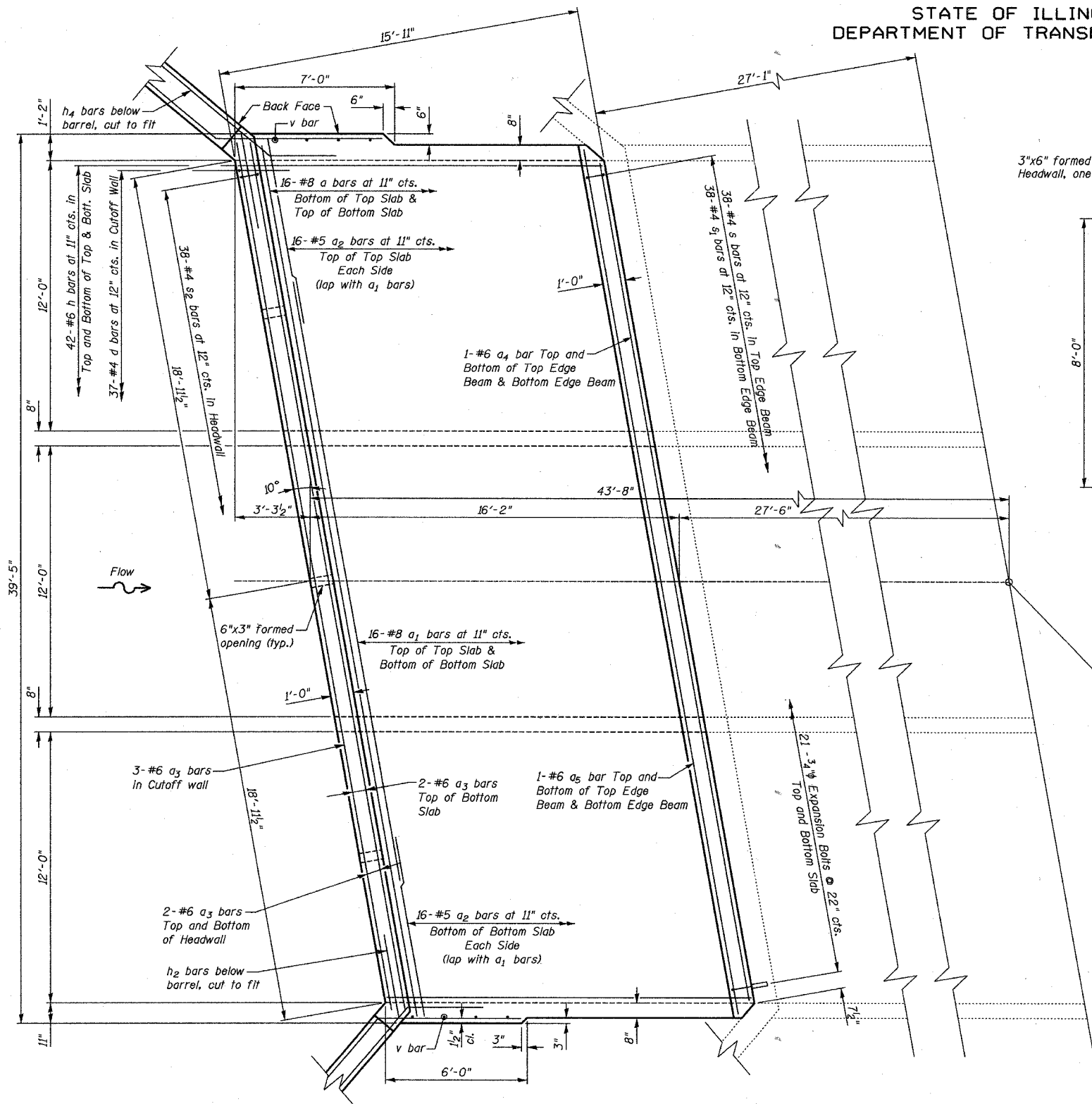
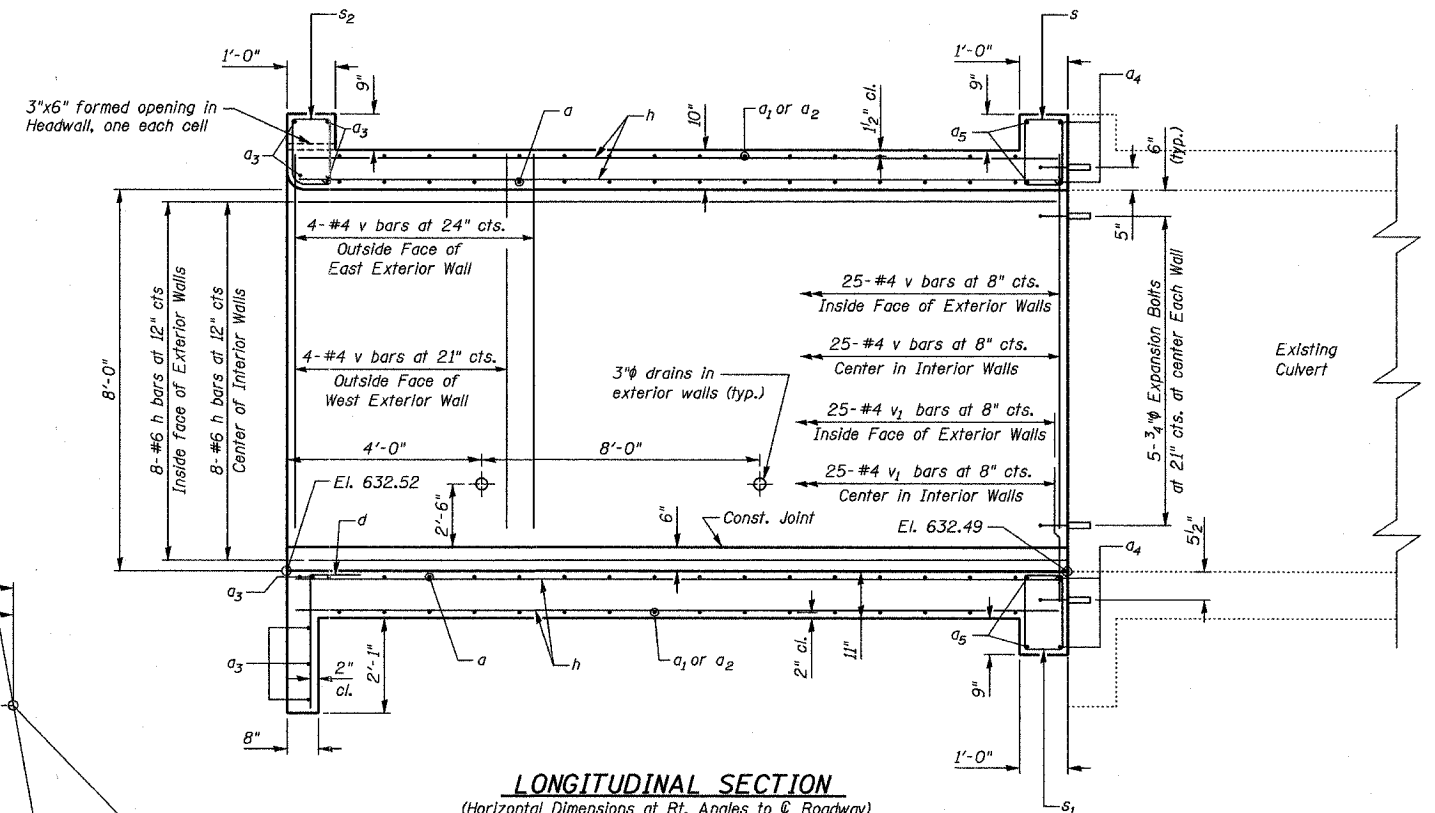


STATE OF ILLINOIS  
DEPARTMENT OF TRANSPORTATION

ROUTE NO.	SECTION	COUNTY	DATE	SHEET	SHEET NO. 2 OF
F.A.P.309	16R-2	WHITESIDE	5/47	196	6 SHEETS
FED. ROAD DIST. NO. 2	ILLINOIS	FED. AID PROJECT-	Contract No. 64969		

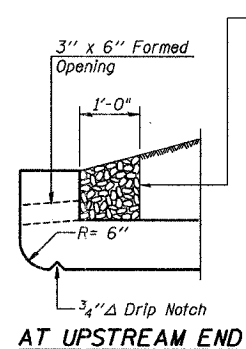


PLAN

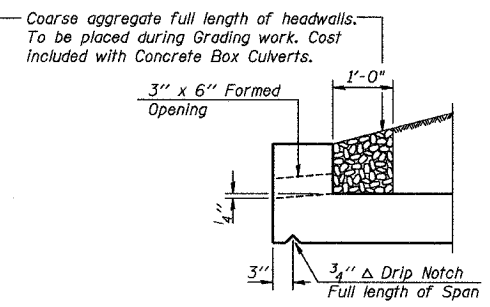


LONGITUDINAL SECTION  
(Horizontal Dimensions at Rt. Angles to C Roadway)

US Rte. 30  
Station 1169+99.31  
El. 645.30



AT UPSTREAM END



DRAIN DETAIL

NORTH CULVERT EXTENSION DETAILS  
U.S. RTE. 30 OVER FRENCH CREEK  
F.A.P. ROUTE 309 SECT. 16 R-2  
WHITESIDE COUNTY  
STATION 1169+99.31  
STRUCTURE NUMBER 098-2021

DESIGNED	DJC
CHECKED	WDL
DRAWN	JSD
CHECKED	WDL

Note:  
Min. lap #5 = 1'-8"  
Work this sheet with sheet 4 of 6



111 W. Washington St., Suite 1750  
Chicago, IL 60602  
Ph.(312)628-3886  
Fax(312)628-3892  
IL Design Firm Registration  
No. 184-001518