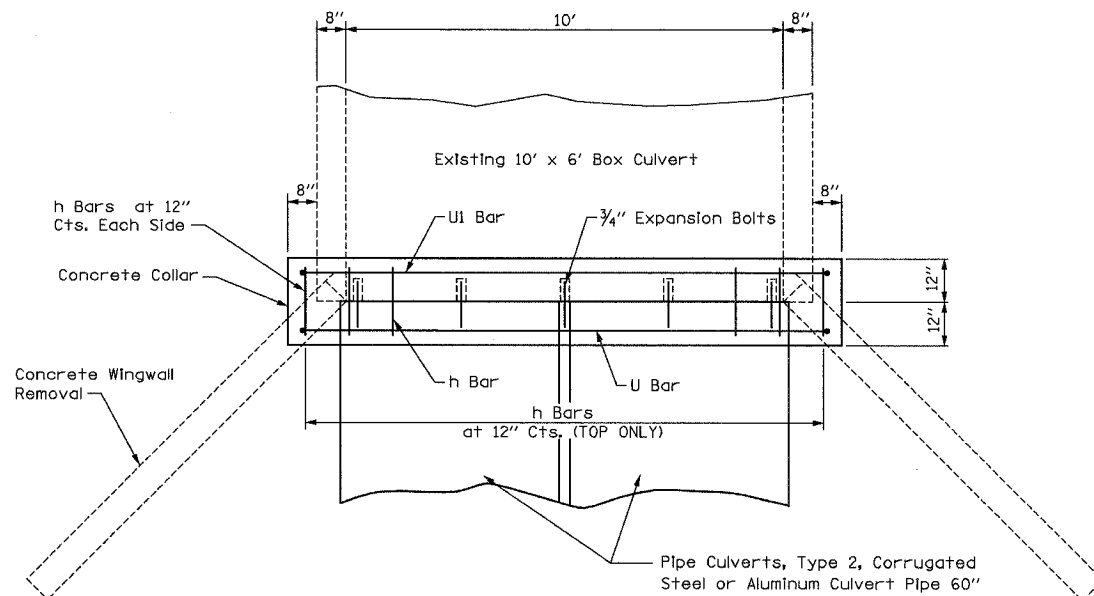
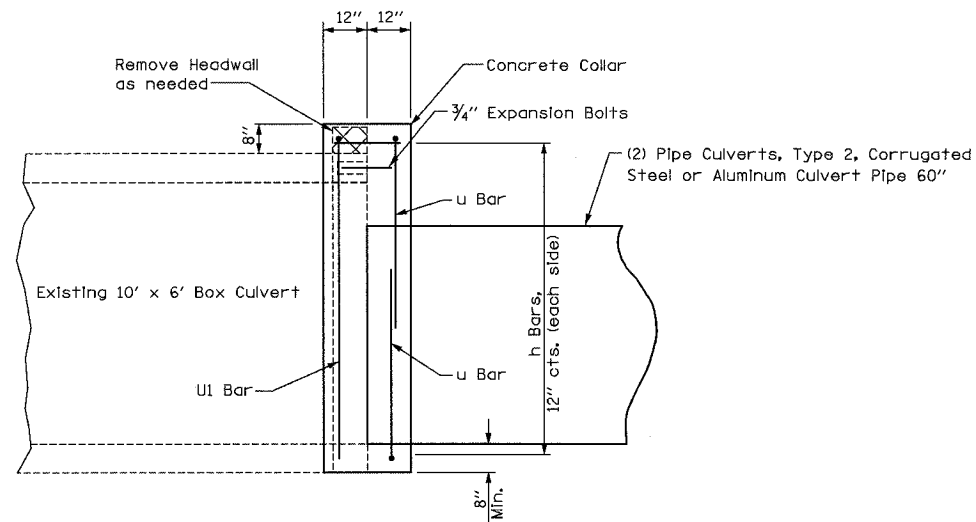


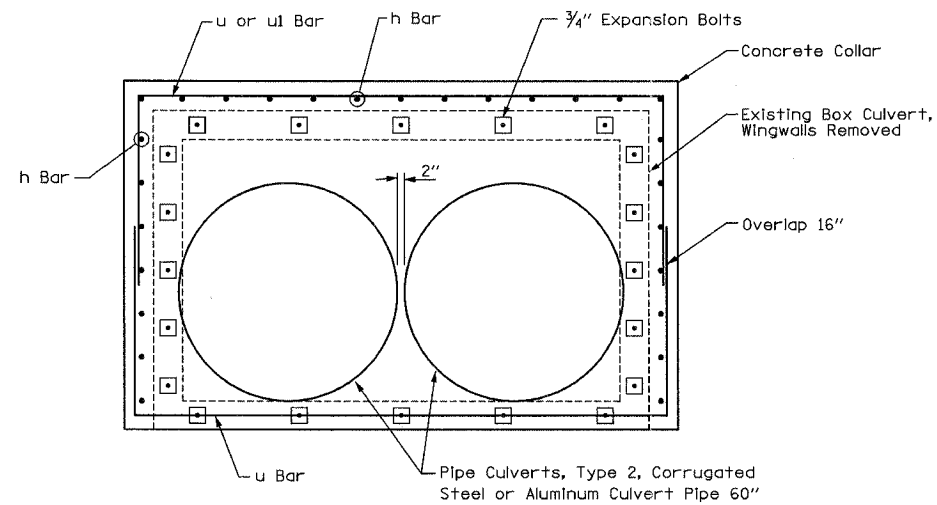
F.A.P. RTE.	SECTION	COUNTY	TOTAL SHEETS	SHEET NO.
309	16R-2	WHITESIDE	547	207
STA.	TO STA.			
	FED. ROAD DIST. NO. 2 ILLINOIS		FED. AID PROJECT	



PLAN OF CULVERT WITH ANGLED WING WALLS



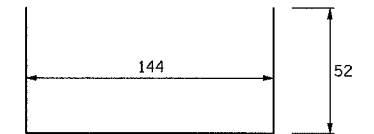
SIDE VIEW



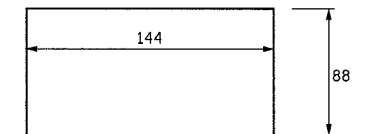
FRONT VIEW

Bill of Materials

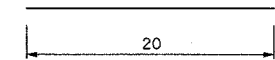
3/4" Expansion Bolts =	27 Each
Concrete Collar =	3.0 Cu. Yd.
Reinforcement =	76 Lb.
Pipe Culverts, Type 2, Corrugated Steel or Aluminum Culvert Pipe 60" =	80 Foot



(*4) U BAR



(*4) U1 BAR



(*4) h BAR

General Notes

Concrete Collars shall be constructed of Class SI Concrete in accordance with Section 503 of the Standard Specifications

Reinforcement bars shall conform to Section 508 of the Standard Specifications.

The concrete will be paid for at the contract unit price per cubic yard for CONCRETE COLLAR. Reinforcement will be paid for at the contract unit price per pound for REINFORCEMENT BARS. Expansion Bolts, when required, will be paid for at the contract unit price each for EXPANSION BOLTS of the size indicated, which price shall include furnishing, drilling holes, and installing the expansion bolts complete in place. These bolts shall extend at least 8 inches into the new concrete.

Concrete wing walls and headwall removal shall be incidental to the temporary culvert extension and shall not be paid for separately.

REVISIONS	
NAME	DATE

ILLINOIS DEPARTMENT OF TRANSPORTATION
 TEMPORARY CULVERT EXTENSION DETAIL
 @ STA. 1158+14.82 RT.
 FAP ROUTE 309 (US 30)
 SECTION 16R-2
 EAST CONTRACT
 FROM 0.2 MILE EAST OF JACKSON ST.
 TO FRENCH CREEK
 WHITESIDE COUNTY

SCALE: 1=10
 DATE 11/22/05

DRAWN BY BRD
 CHECKED BY REW