

IT SHALL BE THE CONTRACTOR'S RESPONSIBILITY TO ASCERTAIN THE LOCATIONS OF EXISTING WATER MAINS, GAS MAINS, SEWERS, ELECTRIC POWER LINES, TELEPHONE LINES AND OTHER UTILITIES FROM THE UTILITY COMPANIES AND BY FIELD INSPECTION.

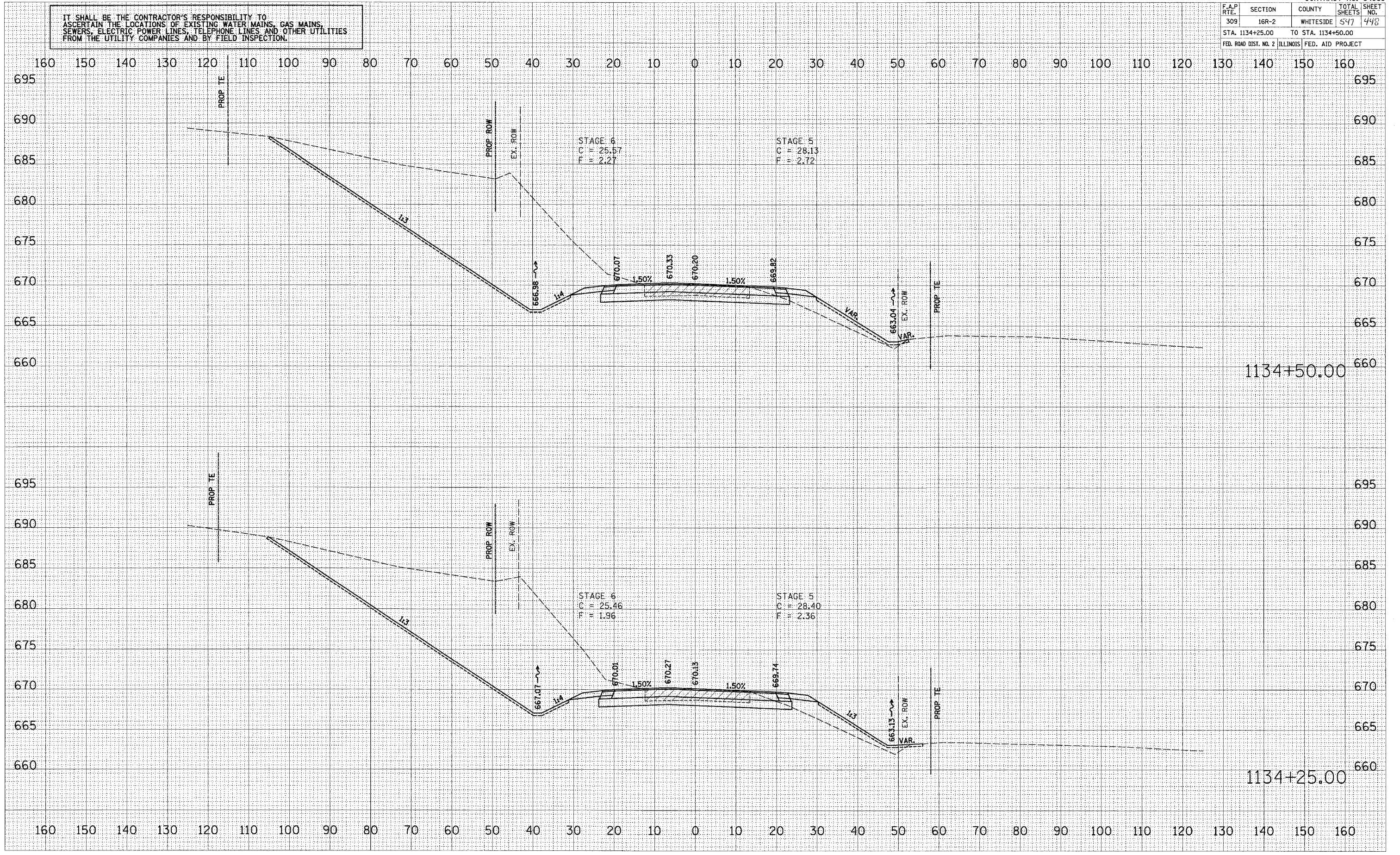
CONTRACT NO. 64969

F.A.P. RTE.	SECTION	COUNTY	TOTAL SHEETS	SHEET NO.
309	16R-2	WHITESIDE	547	448
STA. 1134+25.00		TO STA. 1134+50.00		
FED. ROAD DIST. NO. 2		ILLINOIS	FED. AID PROJECT	

DATE	
BY	
FINAL SURVEY	SURVEYED
PLotted	PLotted
NOTE BOOK	NOTE BOOK
NO.	NO.
AREAS CHECKED	AREAS CHECKED

DATE	
BY	
ORIGINAL SURVEY	SURVEYED
PLotted	PLotted
NOTE BOOK	NOTE BOOK
NO.	NO.
AREAS CHECKED	AREAS CHECKED

PLOT DATE = DATE
 FILE NAME = FILEL
 PLOT SCALE = SSCALE
 USER NAME = USER#



US ROUTE 30

12/9/2005 9:36:26 AM