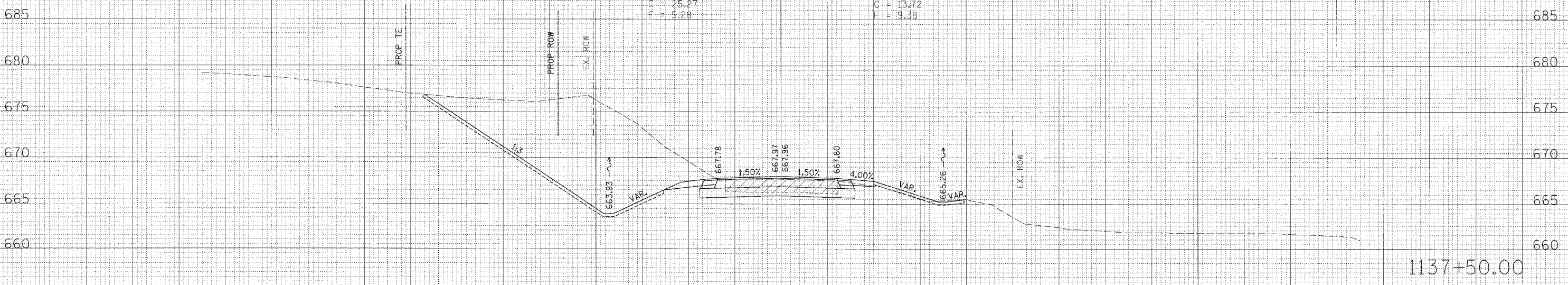
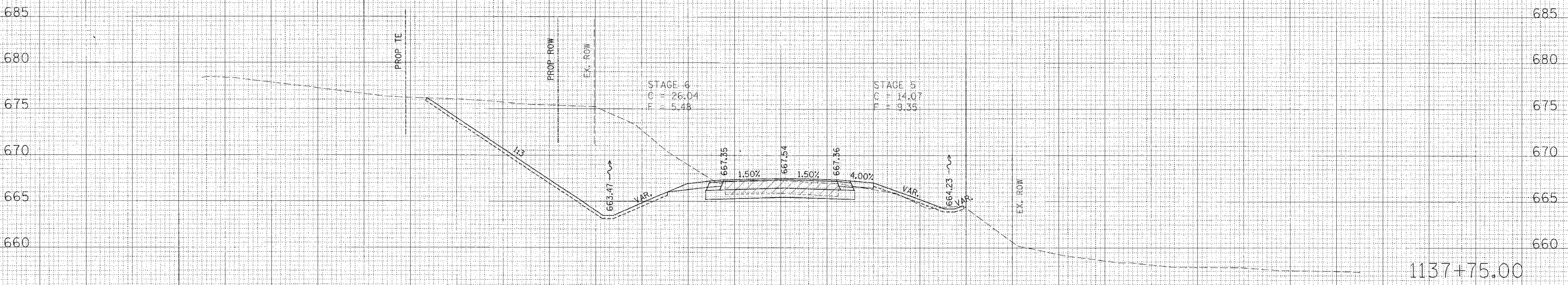


F.A.P. RTE.	SECTION	COUNTY	TOTAL SHEETS	SHEET NO.
309	16R-2	WHITESIDE	547	456
STA. 1137+50.00		TO STA. 1137+75.00		
FED. ROAD DIST. NO. 2		ILLINOIS FED. AID PROJECT		

IT SHALL BE THE CONTRACTOR'S RESPONSIBILITY TO ASCERTAIN THE LOCATIONS OF EXISTING WATER MAINS, GAS MAINS, SEWERS, ELECTRIC POWER LINES, TELEPHONE LINES AND OTHER UTILITIES FROM THE UTILITY COMPANIES AND BY FIELD INSPECTION.

160 150 140 130 120 110 100 90 80 70 60 50 40 30 20 10 0 10 20 30 40 50 60 70 80 90 100 110 120 130 140 150 160



160 150 140 130 120 110 100 90 80 70 60 50 40 30 20 10 0 10 20 30 40 50 60 70 80 90 100 110 120 130 140 150 160

BY	DATE
STARTED	PLotted
NOTE BOOK	AREAS CHECKED
NO.	

BY	DATE
STARTED	PLotted
NOTE BOOK	AREAS CHECKED
NO.	

PLOT DATE = 8/2/05
 FILE NAME = 8/2/05
 PLOT SCALE = 1"=40'
 USER NAME =