

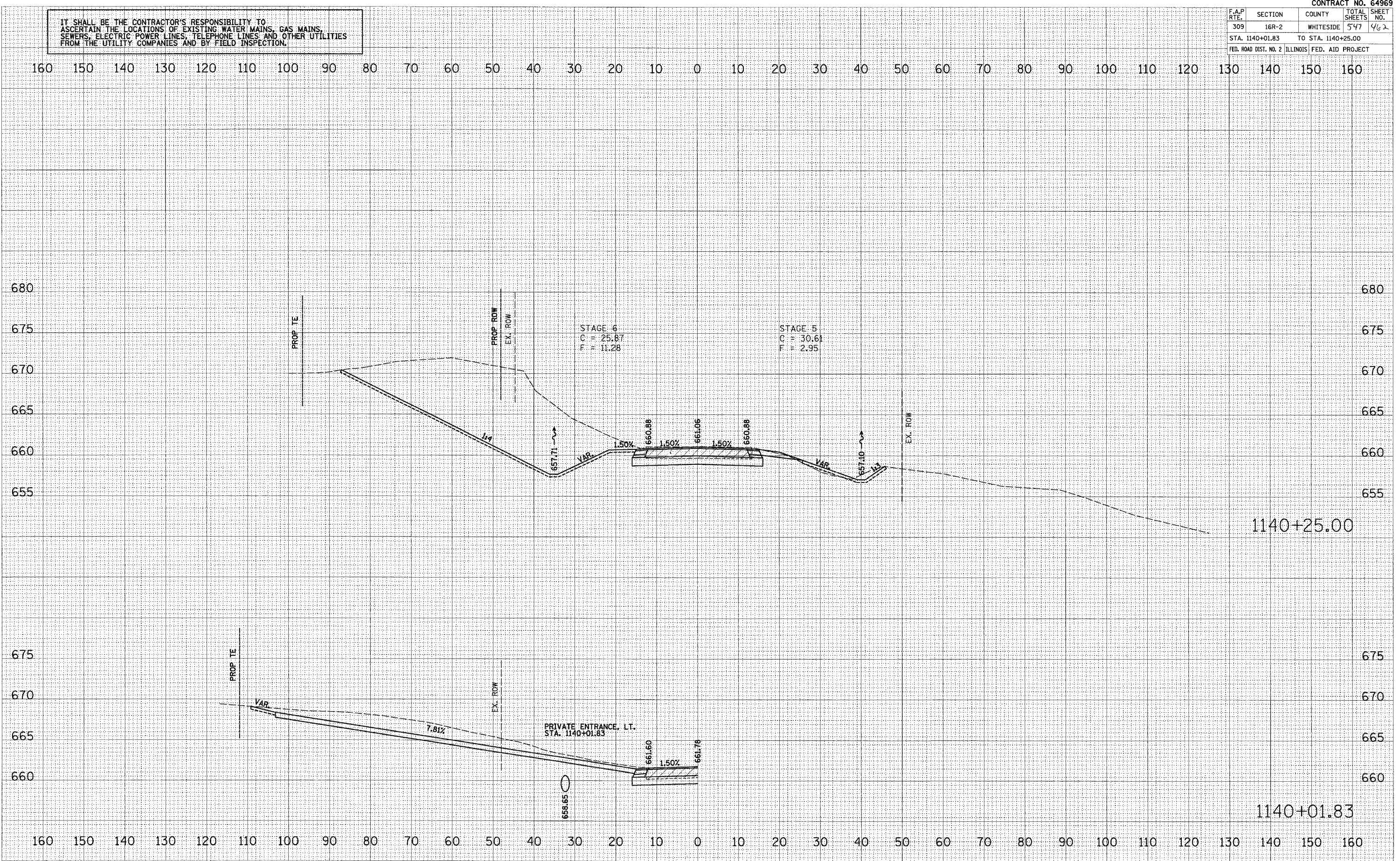
IT SHALL BE THE CONTRACTOR'S RESPONSIBILITY TO ASCERTAIN THE LOCATIONS OF EXISTING WATER MAINS, GAS MAINS, SEWERS, ELECTRIC POWER LINES, TELEPHONE LINES AND OTHER UTILITIES FROM THE UTILITY COMPANIES AND BY FIELD INSPECTION.

| CONTRACT NO. 64969 | | | | |
|------------------------------------|---------|-----------|------------------|-----------|
| F.A.P. RTE. | SECTION | COUNTY | TOTAL SHEETS | SHEET NO. |
| 309 | 16R-2 | WHITESIDE | 547 | 462 |
| STA. 1140+01.83 TO STA. 1140+25.00 | | | | |
| FED. ROAD DIST. NO. 2 | | ILLINOIS | FED. AID PROJECT | |

FINAL SURVEY
 STARTED _____ BY _____ DATE _____
 PLOTTED _____
 NOTE BOOK _____
 AREAS _____
 AREAS CHECKED _____

ORIGINAL SURVEY
 STARTED _____ BY _____ DATE _____
 PLOTTED _____
 NOTE BOOK _____
 AREAS _____
 AREAS CHECKED _____

PLOT DATE = DATE
 FILE NAME = FILE#
 PLOT SCALE = SCALE
 USER NAME = USER#



US ROUTE 30

revised 11/19/2005 9:38:31 AM