

F.A.P. RTE.	SECTION	COUNTY	TOTAL SHEETS	SHEET NO.
301	24BR-1	JO DAVIESS	50	1

STATE OF ILLINOIS
DEPARTMENT OF TRANSPORTATION
DIVISION OF HIGHWAYS

**PROPOSED
HIGHWAY PLANS**

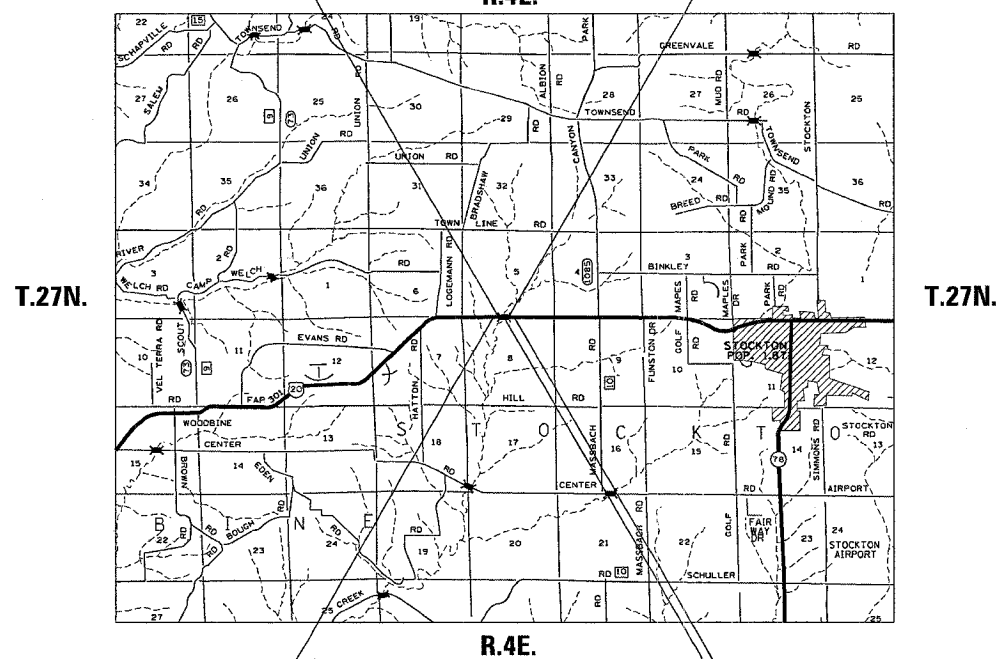
FAP ROUTE 301 (US 20)
SECTION 24BR-1
PROJECT BHF-0301(035)
JODAVIESS COUNTY
C-92-129-05

D-92-002-05



FOR INDEX OF SHEETS, SEE SHEET NO. 2
FOR STATE STANDARDS, SEE SHEET NO. 2

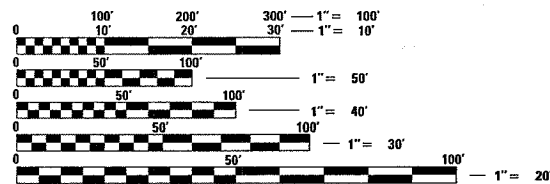
SECTION BEGINS STA. 2022 + 49.92
SECTION ENDS STA. 2024 + 08.88



IMPROVEMENT BEGINS STA. 2019 + 31.57
IMPROVEMENT ENDS STA. 2029 + 40.28

SN 043-0036
REMOVAL AND REPLACEMENT OF SUPERSTRUCTURE
CARRYING US 20 OVER RUCH CREEK

STOCKTON TOWNSHIP SECTION 5 & 8



FULL SIZE PLANS HAVE BEEN PREPARED USING STANDARD ENGINEERING SCALES. REDUCED SIZED PLANS WILL NOT CONFORM TO STANDARD SCALES. IN MAKING MEASUREMENTS ON REDUCED PLANS, THE ABOVE SCALES MAY BE USED.

J.U.L.I.E.
JOINT UTILITY LOCATION INFORMATION FOR EXCAVATION
1-800-892-0123

STATE OF ILLINOIS
DEPARTMENT OF TRANSPORTATION
DIVISION OF HIGHWAYS

SUBMITTED Dec. 12 2005
Gregory Moutts
DEPUTY DIRECTOR OF HIGHWAYS, REGION ENGINEER

February 3, 2006
Mike Hine
ENGINEER OF DESIGN AND ENVIRONMENT

February 3, 2006
Milton P. Seo, P.E.
DIRECTOR OF HIGHWAYS, CHIEF ENGINEER

**PRINTED BY THE AUTHORITY
OF THE STATE OF ILLINOIS**

NET LENGTH OF PROJECT = 158.96 LIN. FT = 0.030 MILES
GROSS LENGTH OF PROJECT = 158.96 LIN. FT = 0.030 MILES

CONTRACT NO. 64A48

PROJECT ENGINEER: BOB WAGNER

SENIOR SQUAD LEADER: SAMEER ABDULLAH (815) 284-5935