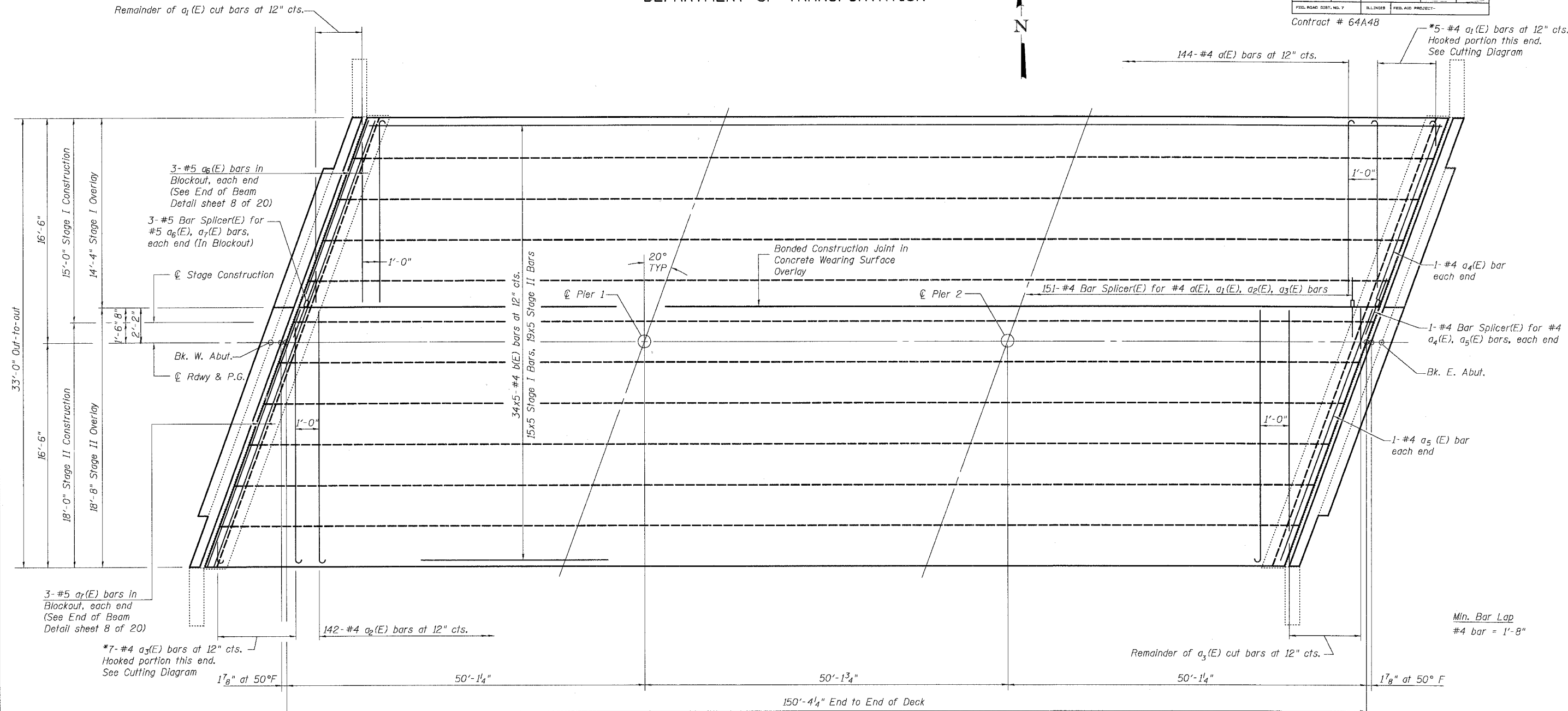


STATE OF ILLINOIS
DEPARTMENT OF TRANSPORTATION

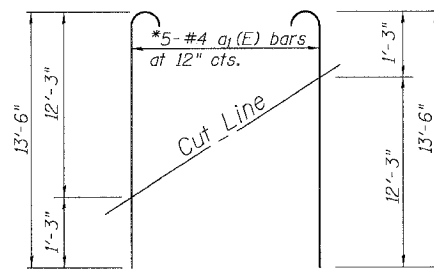
ROUTE NO.	SECTION	COUNTY	SHEET NO.	SHEET NO.
FAP 301	24BR-1	JO DAVIESS	50	16
FED. ROAD DIST. NO. 7		ILLINOIS	FED. AID PROJECT	

SHEET NO. 6
20 SHEETS

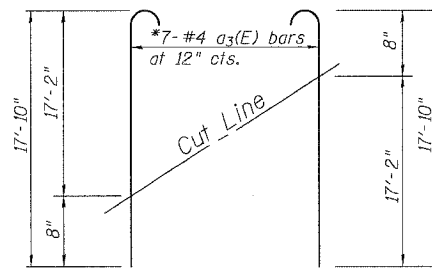
Contract # 64A48



PLAN



FIELD CUTTING DIAGRAM



FIELD CUTTING DIAGRAM

Note:
For remainder of superstructure details, see sheets 7 thru 10 of 20.
Reinforcement bars designated (E) shall be epoxy coated.
Bars indicated thus 32x5 - #4 etc. indicates 32 lines of bars with 5 length per line.

* Order $a_1(E)$ & $a_3(E)$ bars full length.
Cut to fit skew and use remainder of bars in opposite end.

SUPERSTRUCTURE

U.S. 20 OVER RUSH CREEK
F.A.P. ROUTE 301 - SEC. 24BR-1
JO DAVIESS COUNTY
STATION 2023+29.43
S.N. 043-0036

DESIGNED	DF
CHECKED	CB
DRAWN	RG
CHECKED	PM