

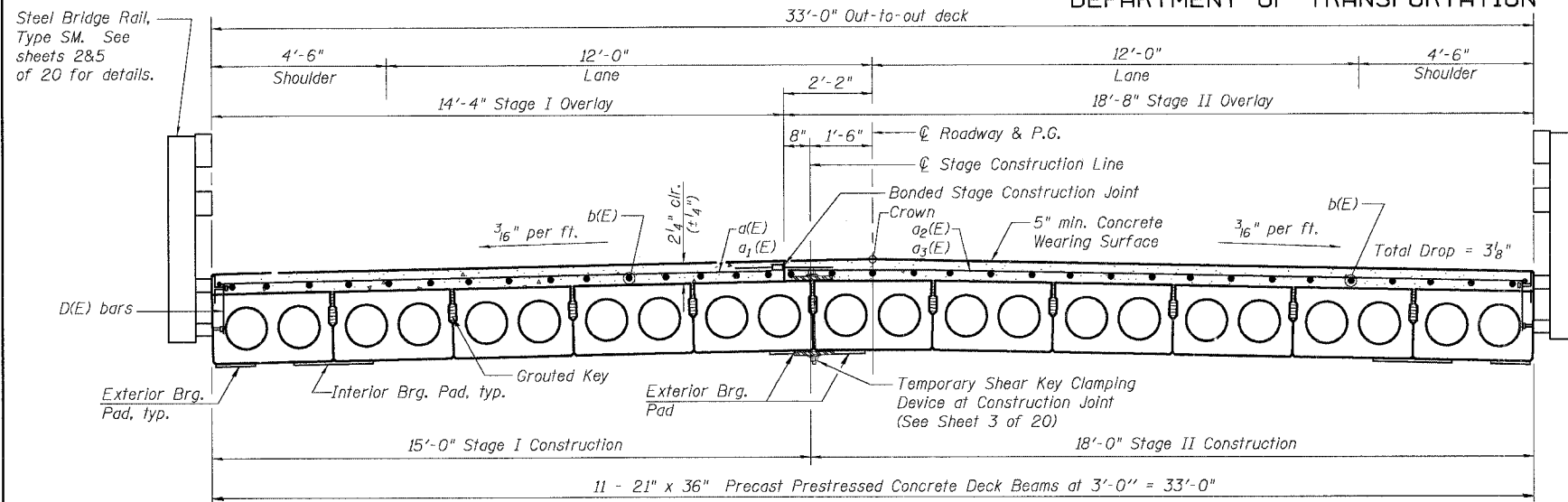
STATE OF ILLINOIS
DEPARTMENT OF TRANSPORTATION

ROUTE NO.	SECTION	COUNTY	SHEETS	SHEET NO.
FAP 301	24BR-1	JO DAVIESS	50	17
FED. ROAD DIST. NO. 7		ILLINOIS	FED. AID PROJECT	

20 SHEETS

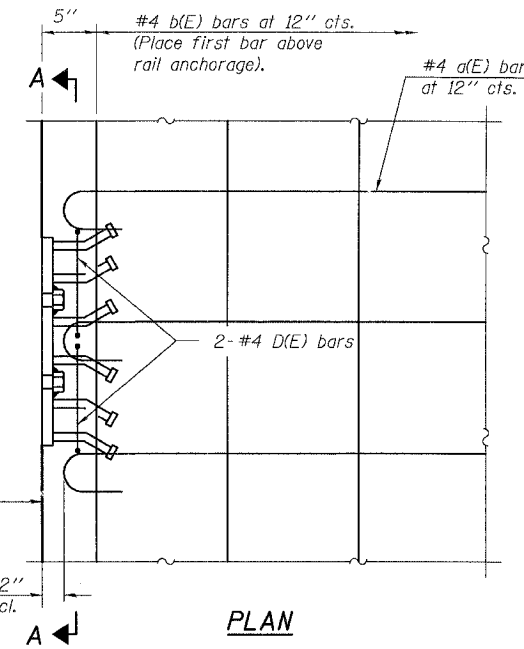
Contract # 64A48

Steel Bridge Rail, Type SM. See sheets 28,5 of 20 for details.

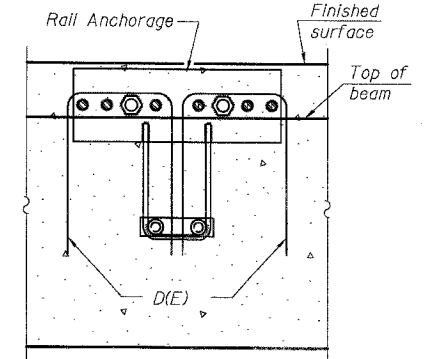


CROSS SECTION

(Looking East)
(Dimensions are at right angles to \varnothing Rdwy)

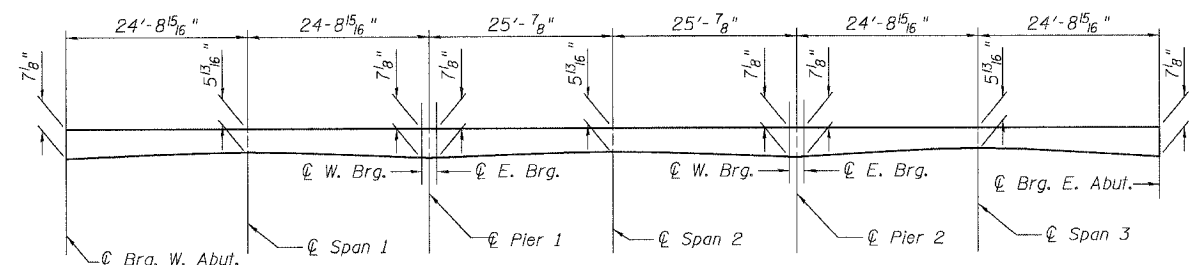


PLAN



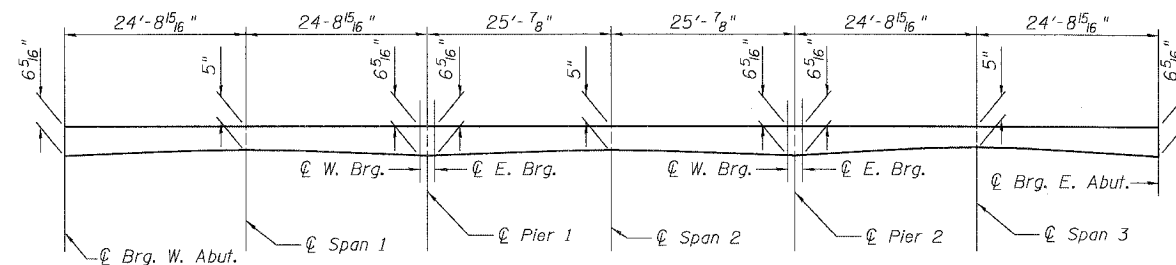
SECTION A-A

Notes:
The rail anchorage shall be cast with the beam and the wearing surface shall be cast in the field. Formwork necessary for the wearing surface may be secured utilizing the bottom rail anchorage inserts and/or additional inserts cast into the beam. Drilling into the beam will not be permitted.



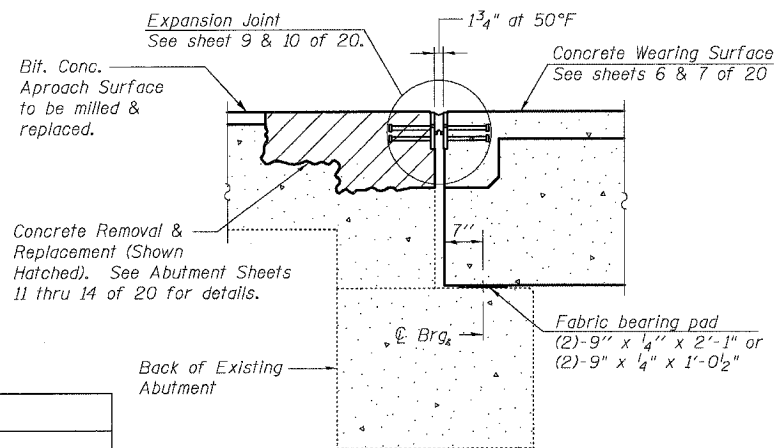
REINFORCED CONCRETE WEARING SURFACE PROFILE ALONG \varnothing ROADWAY

(Concrete wearing surface at blackout at expansion end of beams not shown.)



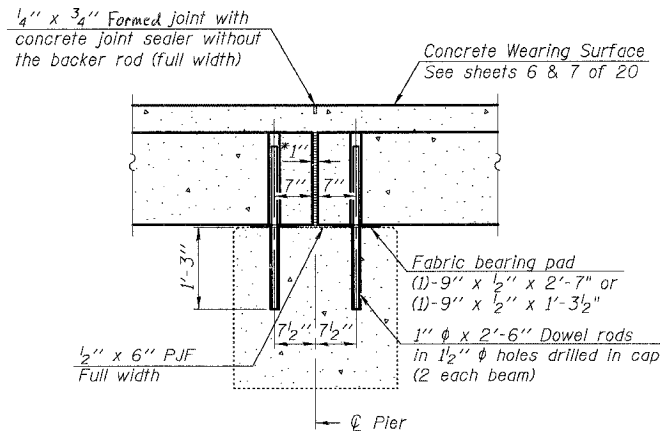
REINFORCED CONCRETE WEARING SURFACE PROFILE ALONG EDGE OF DECK

(Concrete wearing surface at blackout at expansion end of beams not shown.)



SECTION THRU PROPOSED ABUTMENT

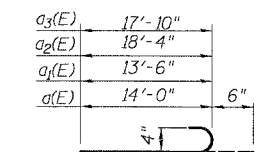
(Dimensions at Rt. Angles to Abutment)



SECTION THRU FIXED PIER

(Dimensions at Rt. Angles to Pier)

* 1" Jt. shall be filled with non-shrink grout. 1" dimension may vary to accommodate tolerance in beam lengths.



BAR a(E), a1(E), a2(E), a3(E)

BILL OF MATERIAL

Bar	No.	Size	Length	Shape
a(E)	144	#4	14'-6"	U
a1(E)	5	#4	14'-0"	U
a2(E)	142	#4	18'-10"	U
a3(E)	7	#4	18'-4"	U
a4(E)	2	#4	14'-10"	U
a5(E)	2	#4	19'-6"	U
a6(E)	6	#5	14'-10"	U
a7(E)	6	#5	19'-6"	U
b(E)	170	#4	31'-4"	U
Bar Splicers	Each		159	
Reinforcement Bars, Epoxy Coated	Pound		7130	
Concrete Wearing Surface	Sq. Yd.		551.3	

Reinforcement bars designated (E) shall be epoxy coated.

SUPERSTRUCTURE DETAILS

U.S. 20 OVER RUSH CREEK
F.A.P. ROUTE 301 - SEC. 24BR-1
JO DAVIESS COUNTY
STATION 2023+29.43
S.N. 043-0036

Notes:

All horizontal dimensions are at right angles to beam ends. Ends of beams shall be aligned at the expansion joints. Any linear variation in the beam lengths shall be placed at the fixed joint. After beams have been erected, holes for dowel rods shall be drilled into substructure and dowel rods placed. Dowel holes shall be filled with non-shrink grout to top of beam and allowed to cure a minimum of 24 hrs prior to grouting the shear keys. Concrete wearing surface (including blackout) to be poured after grouting the shear keys. Hatched area to be poured after concrete wearing surface (including blackout) is in place. Quantity included with Concrete Structures on sheet 13 & 14 of 20. See sheet 8 of 20 for bearing pad details. Dowel rods drilled in cap are included in the cost of Precast Prestressed Concrete Deck Beams (21" Depth).

DESIGNED	MO
CHECKED	CB
DRAWN	RG
CHECKED	DF