

F.A.P. RTE.	SECTION	COUNTY	TOTAL SHEETS	SHEET NO.
301	24BR-1	JO DAVIESS	50	35
STA.		TO STA.		
FED. ROAD DIST. NO.		ILLINOIS FED. AID PROJECT		

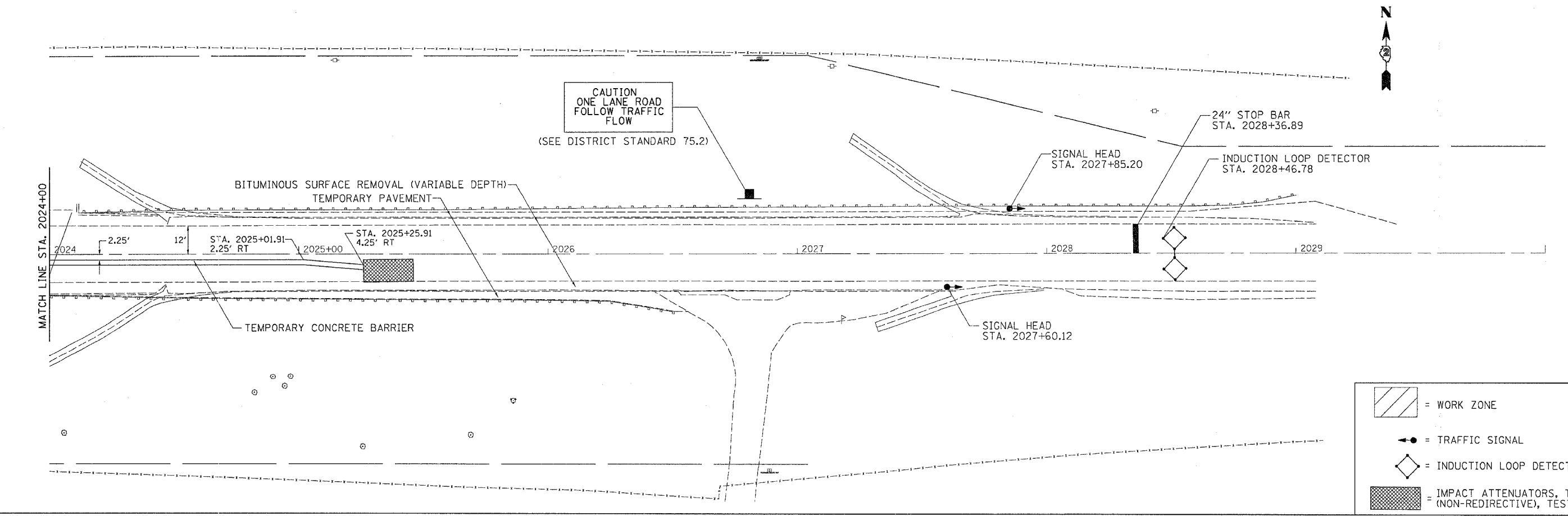
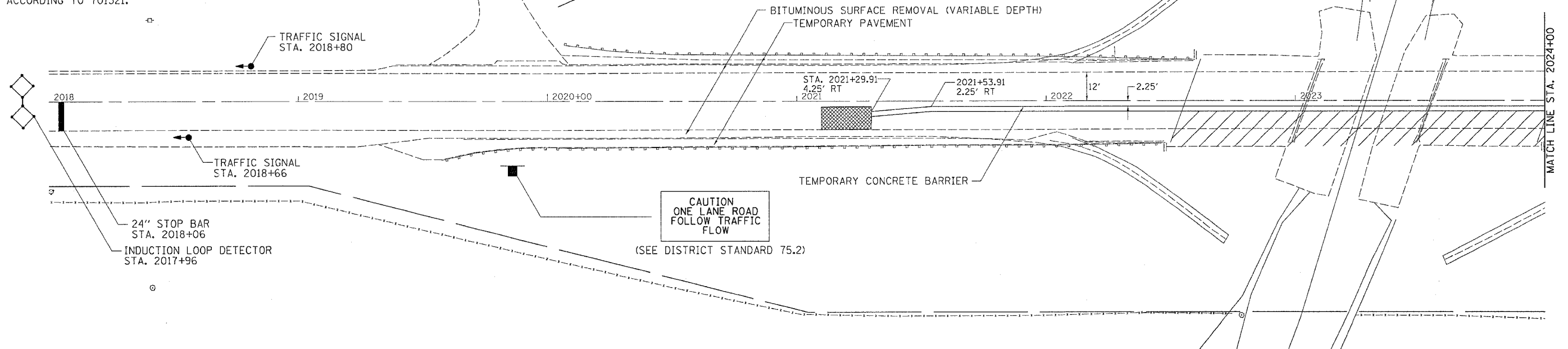
STAGING SHEETS

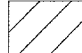



STAGE 1A

STAGE 1A WORK SHALL INCLUDE ALL TEMPORARY PAVEMENT AND MILLING AND OVERLAY OF EXISTING BITUMINOUS SHOULDER BEFORE ANY WORK SHALL BE DONE IN STAGE 1B. TRAFFIC CONTROL AND PROTECTION SHALL BE SET UP AND PAID FOR ACCORDING TO 701326.

STAGE 1B

STAGE 1B WORK SHALL INCLUDE THE REPLACEMENT OF ONE BEAM ON SPAN 3 ONLY. SEE STRUCTURE PLANS SHEETS 3, 19, AND 20 FOR DETAILS. TRAFFIC WILL BE PUSHED ON THE WEST BOUND LANE. TEMPORARY RUMBLE STRIPS WILL BE PLACED ACCORDING TO 701321. TRAFFIC CONTROL AND PROTECTION SHALL BE SET UP AND PAID FOR ACCORDING TO 701321.



-  = WORK ZONE
-  = TRAFFIC SIGNAL
-  = INDUCTION LOOP DETECTOR
-  = IMPACT ATTENUATORS, TEMPORARY (NON-REDIRECTIVE), TEST LEVEL 3

PLOT DATE = Mon Dec 12 09:54:52 2005
 PLOT SCALE = 20.0000 / IN.
 USER NAME = meg111