

F.A.I. RTE.	SECTION	COUNTY	TOTAL SHEETS	SHEET NO.
80	(37-3-1)HL-1	HENRY	10	1

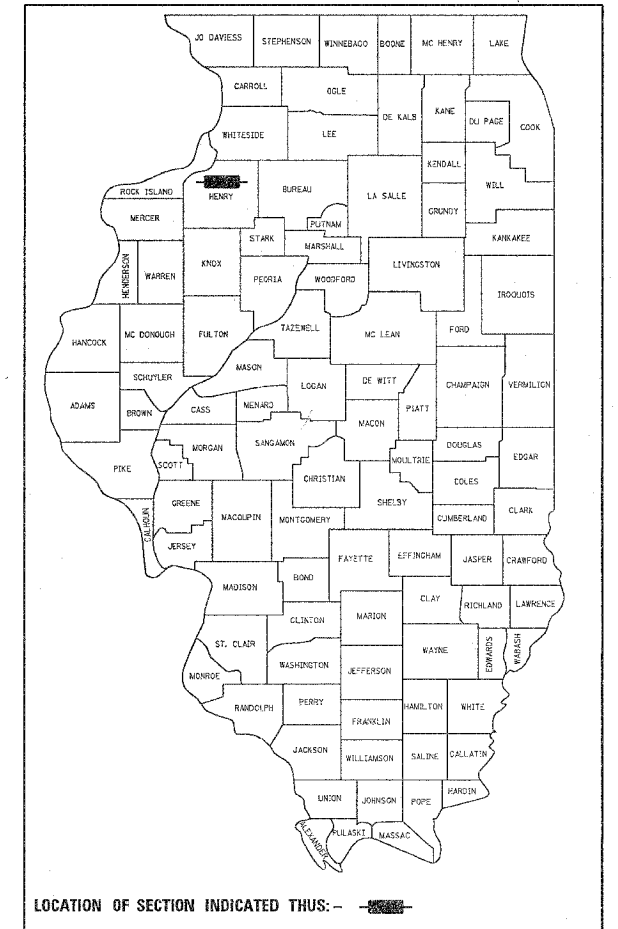
STATE OF ILLINOIS
DEPARTMENT OF TRANSPORTATION
DIVISION OF HIGHWAYS

**PROPOSED
HIGHWAY PLANS**

FAI ROUTE 80 (I-80)
SECTION (37-3-1)HL-1
PROJECT HS-080-1(138)019
HENRY COUNTY

692-037-06

P92-086-05

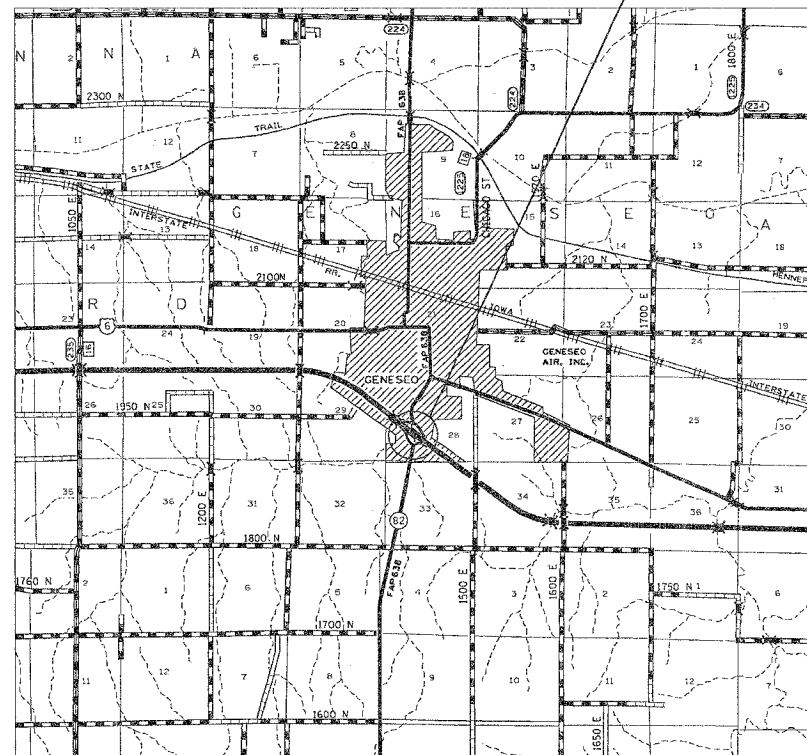


- INDEX OF SHEETS
1 COVER SHEET
INDEX OF SHEETS
STATE STANDARDS
2 SUMMARY OF QUANTITIES
3 GENERAL NOTES
UTILITIES
4-5 PLAN SHEETS
6 BRIDGE CROSSING DETAILS
7 CONTROLLER INSTALLATION TYPE CB-RCS-100
8 DETAILS FOR NIGHTTIME INSPECTION
9 LIGHT POLE FOUNDATION
10 TRAFFIC CONTROL AND PROTECTION FOR RAMPS 95.2

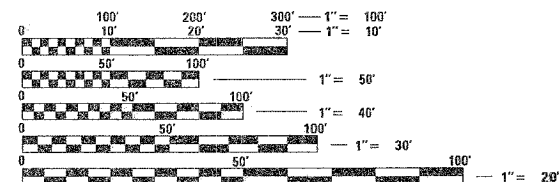
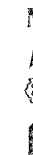
STATE STANDARDS

- 701001-01 OFF-ROAD OPERATIONS, 2L, 2W, MORE THAN 4.5 m (15') AWAY
701006-02 OFF-ROAD OPERATIONS, 2L, 2W, 4.5 m (15') TO 600 mm (24")
FROM PAVEMENT EDGE
701101-01 OFF-ROAD OPERATIONS, MULTILANE, MORE THAN 4.5 m (15')
TO 600 mm (24") FROM PAVEMENT EDGE
701201-02 LANE CLOSURE, 2L, 2W, DAY ONLY, FOR SPEEDS > 45 MPH
701301-02 LANE CLOSURE, 2L, 2W, SHORT TIME OPERATIONS
701001-01 TRAFFIC CONTROL DEVICES

LOCATION OF PROJECT
I-80 - IL 82 RAMPS



R.3E - T.17N



FULL SIZE PLANS HAVE BEEN PREPARED USING STANDARD ENGINEERING SCALES. REDUCED SIZED PLANS WILL NOT CONFORM TO STANDARD SCALES. IN MAKING MEASUREMENTS ON REDUCED PLANS, THE ABOVE SCALES MAY BE USED.

J.U.L.I.E.
JOINT UTILITY LOCATION INFORMATION FOR EXCAVATION
1-800-892-0123

STATE OF ILLINOIS
DEPARTMENT OF TRANSPORTATION
DIVISION OF HIGHWAYS

SUBMITTED 12-21-2005

Gregory J. Monte
DEPUTY DIRECTOR OF HIGHWAYS, REGION ENGINEER
February 3, 2006

Mike Hine
ENGINEER OF DESIGN AND ENVIRONMENT
February 3, 2006

Milton R. Seese P.E.
DIRECTOR OF HIGHWAYS, CHIEF ENGINEER

PRINTED BY THE AUTHORITY
OF THE STATE OF ILLINOIS

DESIGNER: KRISTINE HILL 815-284-5476 ENGINEER: SCOTT KULLERSTRAND 815-284-5468

CONTRACT NO. 64B23

F.A.I. RTE.	SECTION	COUNTY	TOTAL SHEETS	SHEET NO.
80	(37-3-DHL-1	HENRY	10	3
STA.		TO STA.		
FED. ROAD DIST. NO.	ILLINOIS	FED. AID PROJECT		

GENERAL NOTES

1. THE CONTRACTOR SHALL BE RESPONSIBLE FOR PROTECTING UTILITY PROPERTY DURING CONSTRUCTION OPERATIONS AS OUTLINED IN ARTICLE 107.31 OF THE STANDARD SPECIFICATIONS. A MINIMUM OF 48 HOURS ADVANCE NOTICE IS REQUIRED FOR NON-EMERGENCY WORK. THE JULIE NUMBER IS 800-892-0123. THE FOLLOWING LISTED UTILITIES LOCATED WITH THE PROJECT LIMITS OR IMMEDIATELY ADJACENT TO THE PROJECT CONSTRUCTION LIMITS.

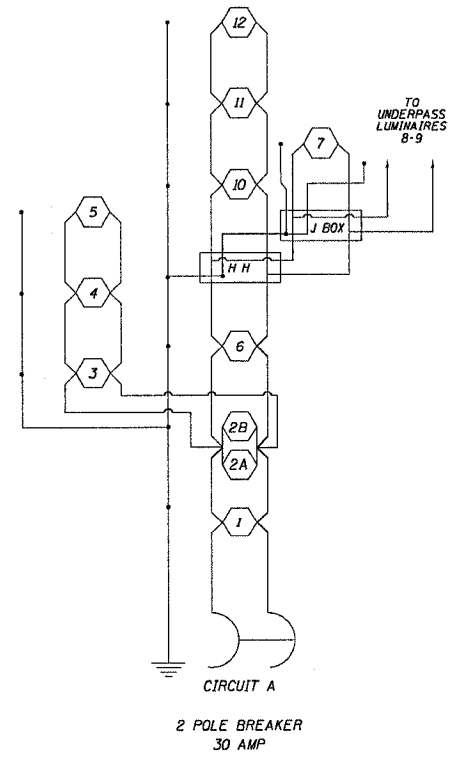
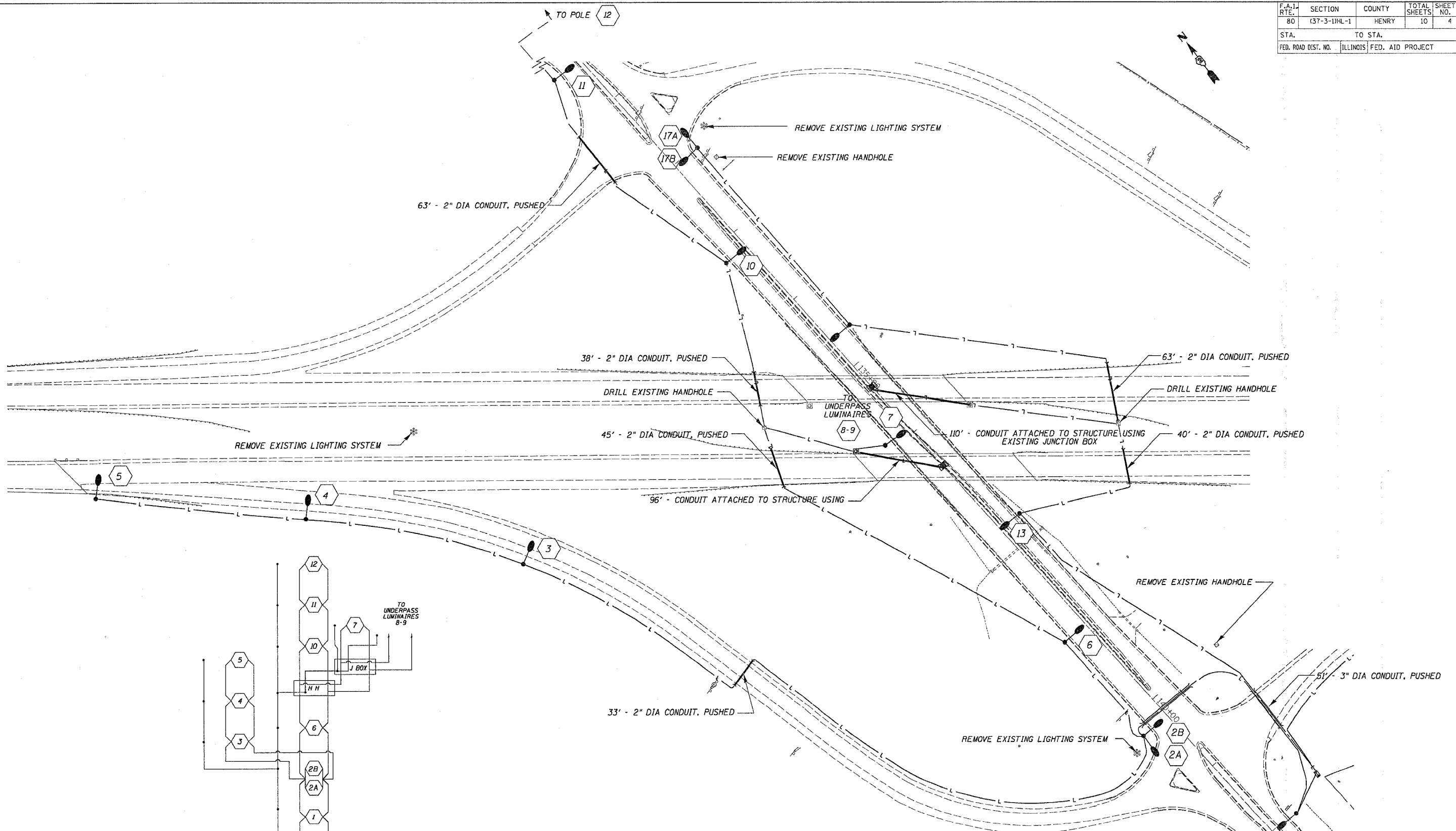
NAME AND ADDRESS OF UTILITY	UTILITIES TYPE	TELEPHONE	JULIE MEMBER
MR MATT STORM GENESEO TELEPHONE CO. 111 E 1ST STREET GENESEO, IL 61254	TELEPHONE	309-944-8012	YES 800-892-0123
MR SCOTT STOGSDILL NICOR GAS CO 1844 FERRY RD NAPERVILLE, IL 60563-9600	GAS	630-983-8678	YES 800-892-0123
IDOT R2-D2 OPERATIONS 819 DEPOT AVE DIXON IL 61021	GOVT	815-284-5469	NO 815-284-5469
MR DENNIS JARDING MEDIACOM 3900-26TH AVENUE MOLINE, IL 61265	CATV	309-743-4750	YES 800-892-0123
MR KEN STOCK CITY OF GENESEO MUNICIPAL UTILITIES 101 S STATE STREET GENESEO, IL 61254	WATER, SEWER & ELECTRIC	309-944-8424	YES 800-892-5469

2. NO WORK SHALL BE ALLOWED UNTIL ALL COMPONENTS NECESSARY TO COMPLETE THE LIGHTING INSTALLATION HAVE ARRIVED ON THE JOB SITE.

3. A 5" STUD SHALL BE REQUIRED FOR THE PLACEMENT OF POLES TO HELIX FOUNDATIONS. IN ADDITION, A NUT & WASHER SHALL BE SNUGGLY PLACED ON THE BOTTOM OF THE BASE PLATE ON EACH STUD.

REVISIONS		ILLINOIS DEPARTMENT OF TRANSPORTATION
NAME	DATE	
		SCALE: VERT. HORIZ. DATE DRAWN BY CHECKED BY

F.A.I. RTE.	SECTION	COUNTY	TOTAL SHEETS	SHEET NO.
80	137-3-114L-1	HENRY	10	4
STA.		TO STA.		
FED. ROAD DIST. NO.	ILLINOIS	FED. AID PROJECT		



REVISIONS	
NAME	DATE

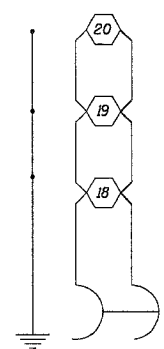
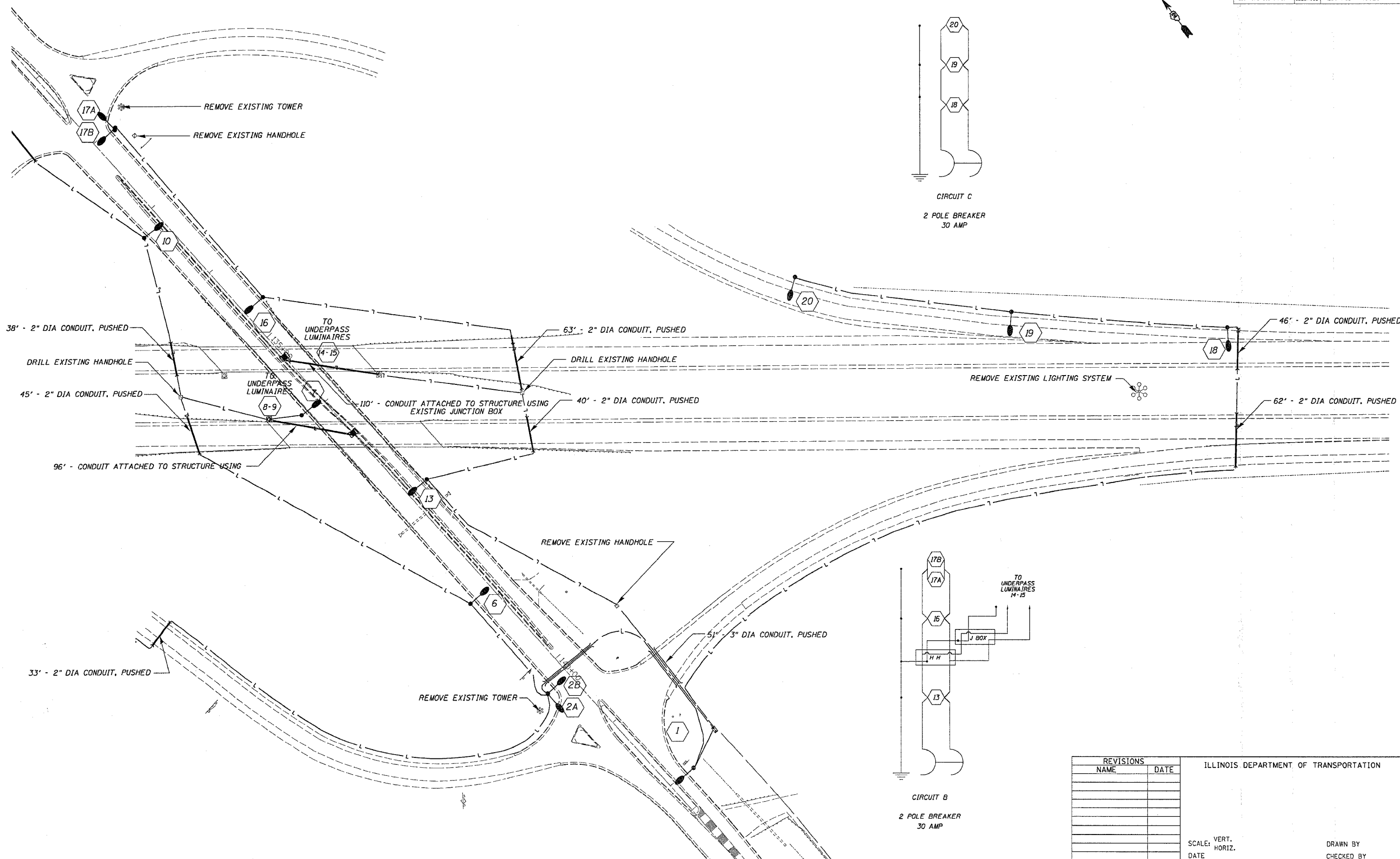
ILLINOIS DEPARTMENT OF TRANSPORTATION

SCALE: VERT. HORIZ.
DATE

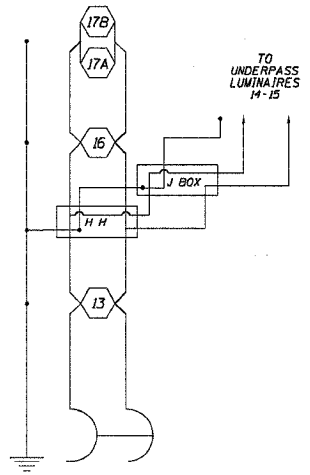
DRAWN BY
CHECKED BY

Plot Date = Wed Dec 21 15:17:45 2006
 Plot Name = P:\P...
 Plot Scale = 50,000.00 / IN.
 User Name = h11k1

F.A.I. RTE.	SECTION	COUNTY	TOTAL SHEETS	SHEET NO.
80	(37-3-1)HL-1	HENRY	10	5
STA.		TO STA.		
FED. ROAD DIST. NO.		ILLINOIS FED. AID PROJECT		



CIRCUIT C
2 POLE BREAKER
30 AMP



CIRCUIT B
2 POLE BREAKER
30 AMP

REVISIONS	
NAME	DATE

ILLINOIS DEPARTMENT OF TRANSPORTATION

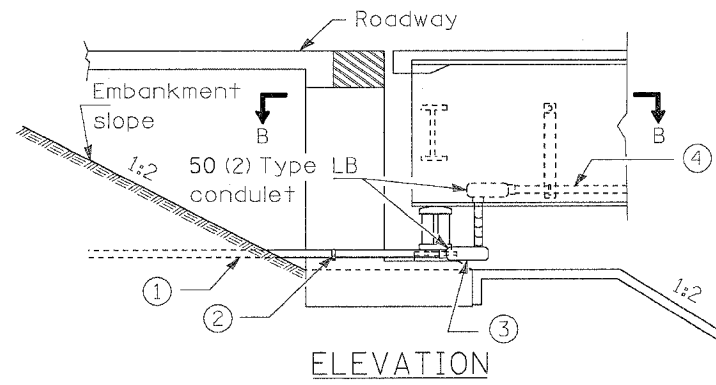
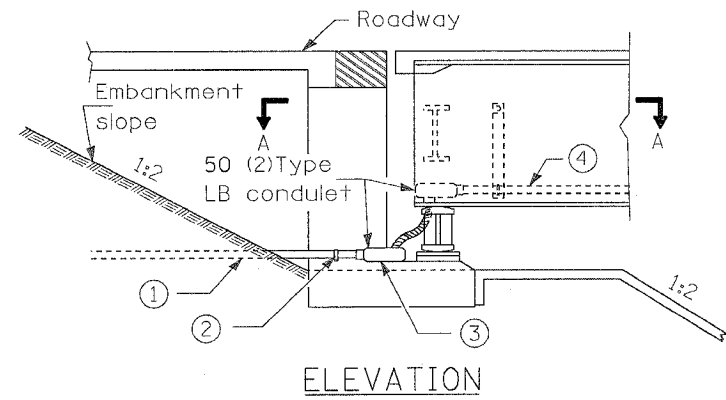
SCALE: VERT. _____
HORIZ. _____

DATE _____

DRAWN BY _____
CHECKED BY _____

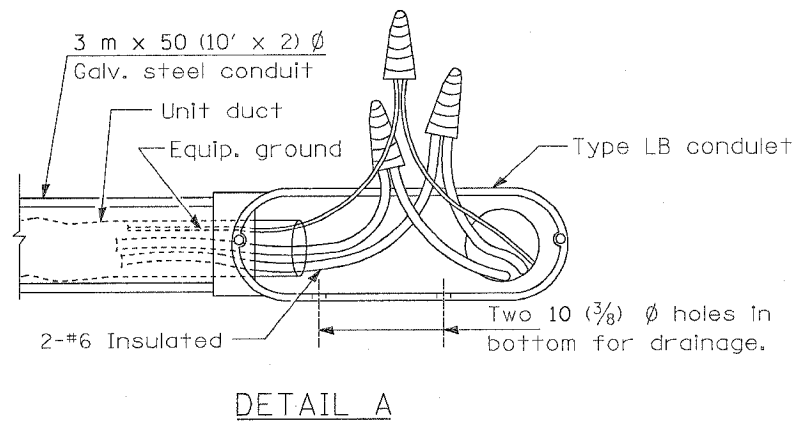
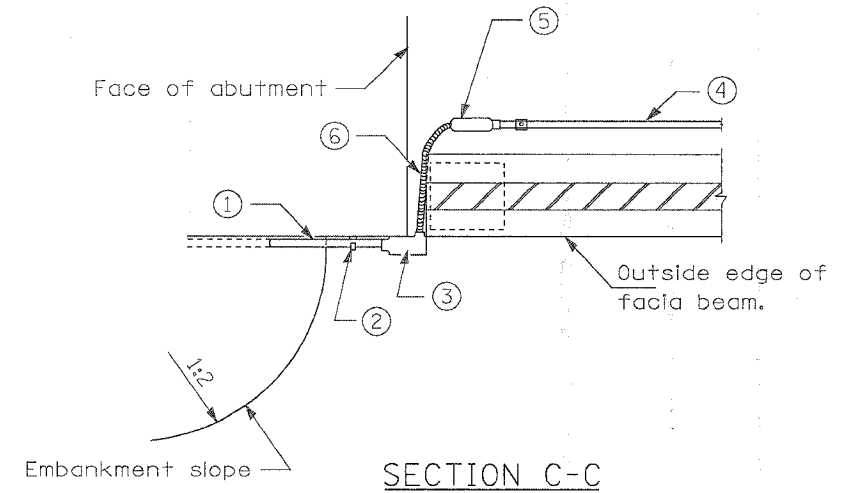
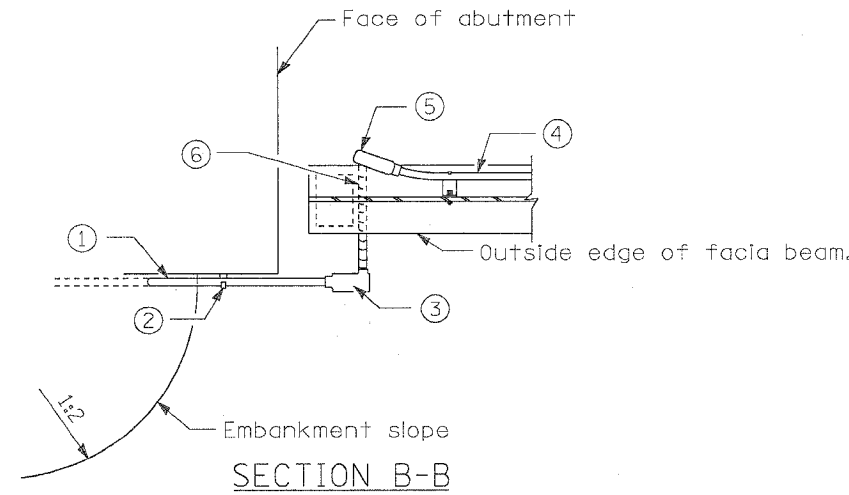
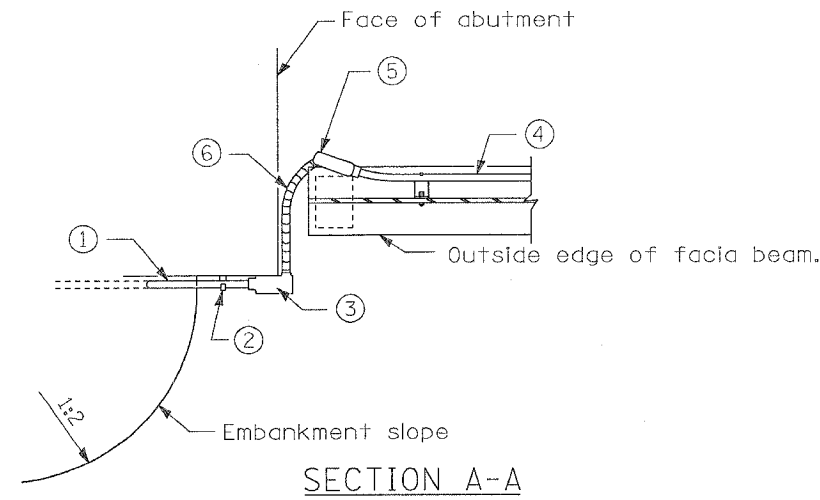
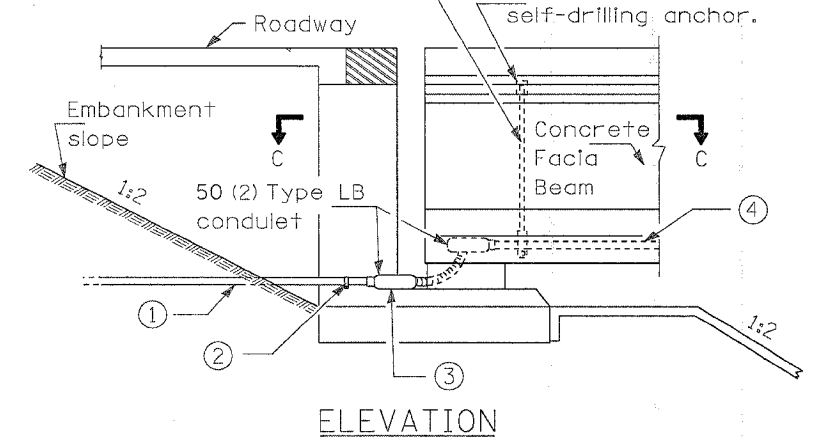
PLOT DATE * Wed Dec 21 13:17:43 2005
FILE NAME * P:\Projects\052-988-95\plan sheets 64b23.dgn
USER * N111R

F.A. I. RTE.	SECTION	COUNTY	TOTAL SHEETS	SHEET NO.
80	I37-3-1HL-1	HENRY	10	6
STA.	TO STA.			
FED. ROAD DIST. NO.	ILLINOIS FED. AID PROJECT			

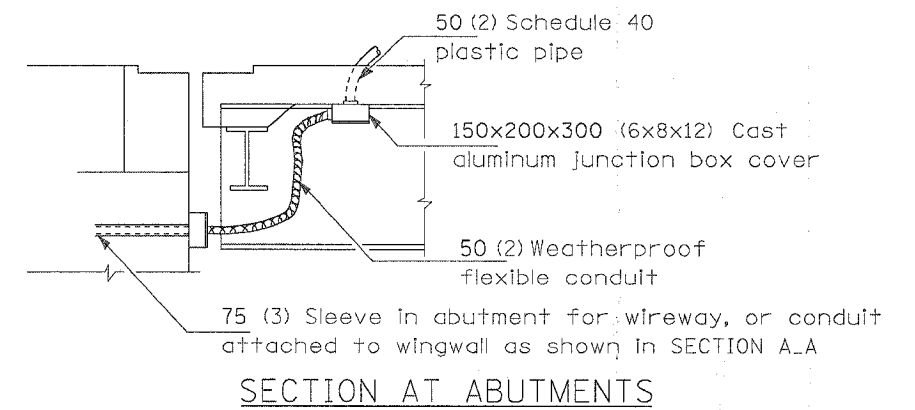
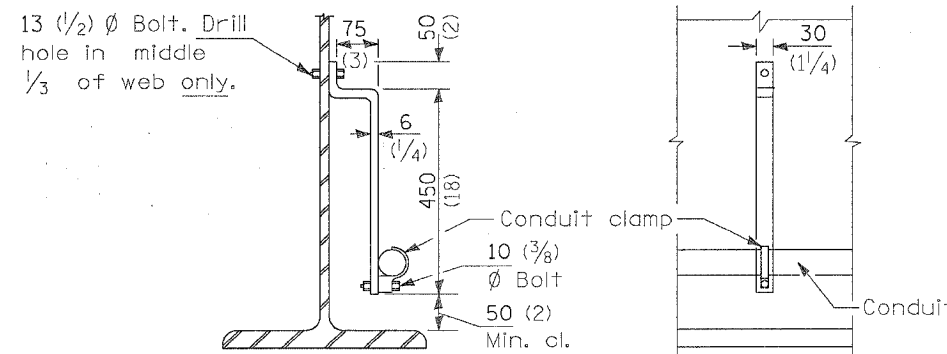


25 (1/2) Galvanized or stainless steel hanger rod on 1.5 m (5') maximum centers. Support conduit 100 to 200 (4 to 8) above lower edge of fascia beam.

Insert or an approved self-drilling anchor.



- NOTES**
- ① 3 m x 50 (10' x 2) ϕ Galv. steel conduit
 - ② Cast malleable iron or stainless steel conduit clamp
 - ③ Drill two 10 (3/8) ϕ holes in bottom side of LB conduit for drainage. Extend unit duct into LB conduit 50 to 75 (2) to (3). (See DETAIL A).
 - ④ 50 (2) Galv. steel conduit
 - ⑤ Do not extend LB conduit beyond end of fascia beam.
 - ⑥ Liquid tight flexible conduit



All dimensions are in millimeters unless otherwise shown.

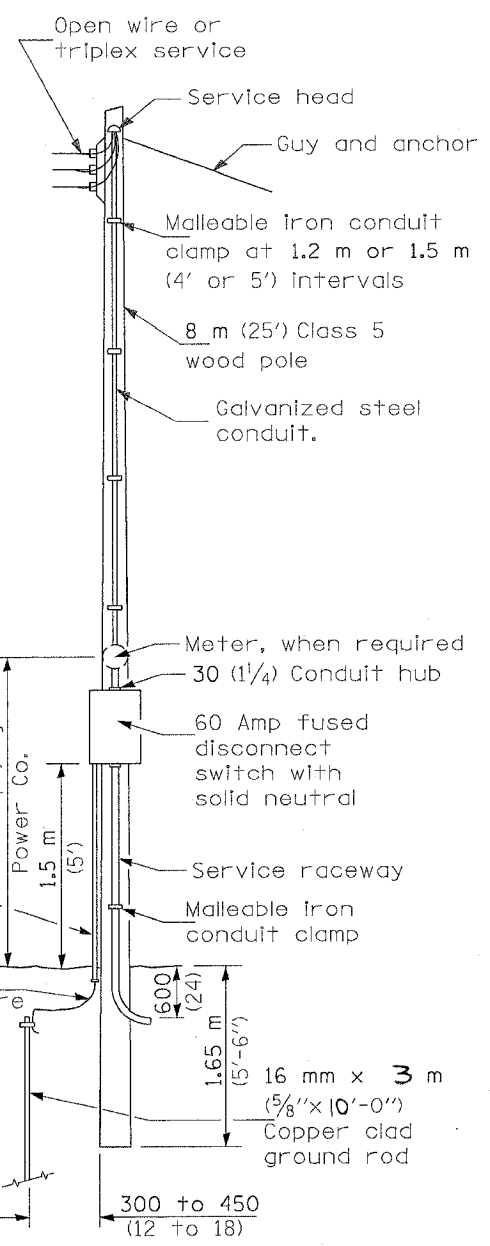
DATE	REVISIONS

BRIDGE CROSSING DETAILS

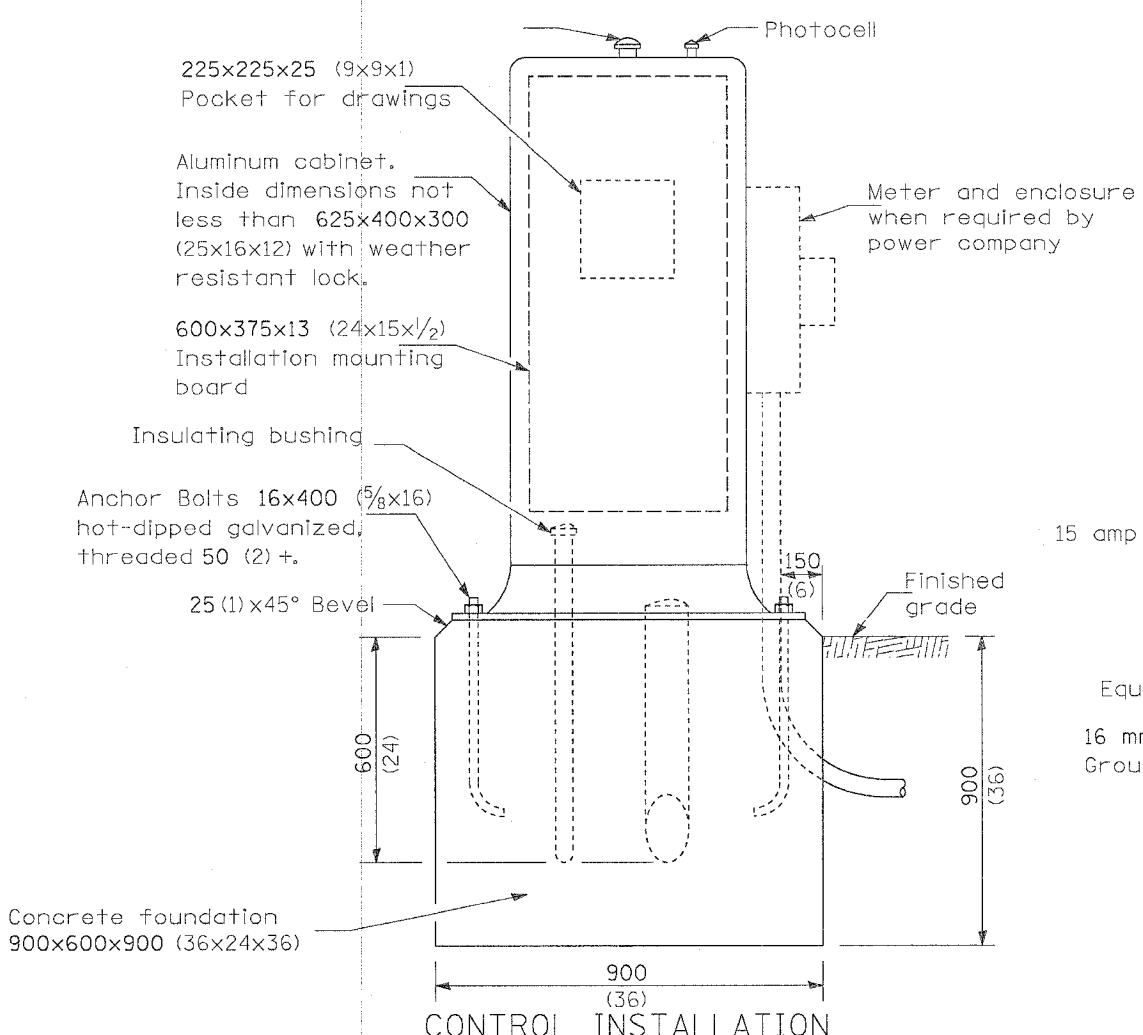
I-80 EASTBOUND S.N. 0370169
I-80 WESTBOUND S.N. 0370170

F.A. I. RTE.	SECTION	COUNTY	TOTAL SHEETS	SHEET NO.
80	(37-3-1)HL-1	HENRY	10	7
STA.		TO STA.		
FED. ROAD DIST. NO.		ILLINOIS FED. AID PROJECT		

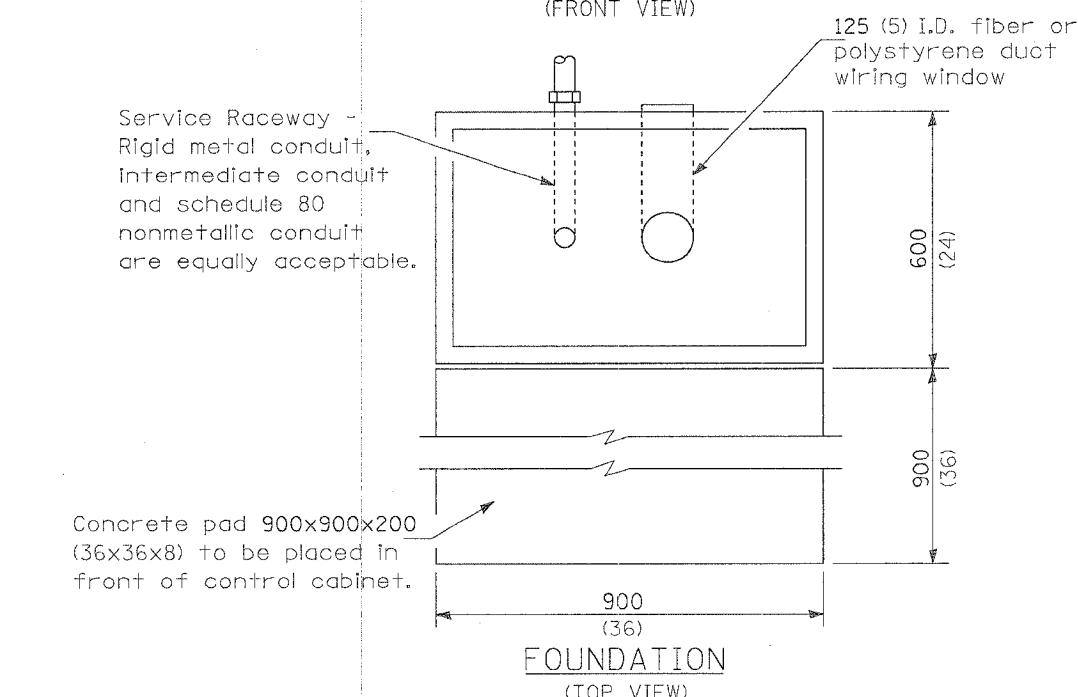
- A Selector switch
- B 2 Pole 100 amp contactor
- C 2 Pole 60 amp service disconnect
- D,E,F 2 Pole 30 amp breakers
- G Photocell w/integral surge arrester



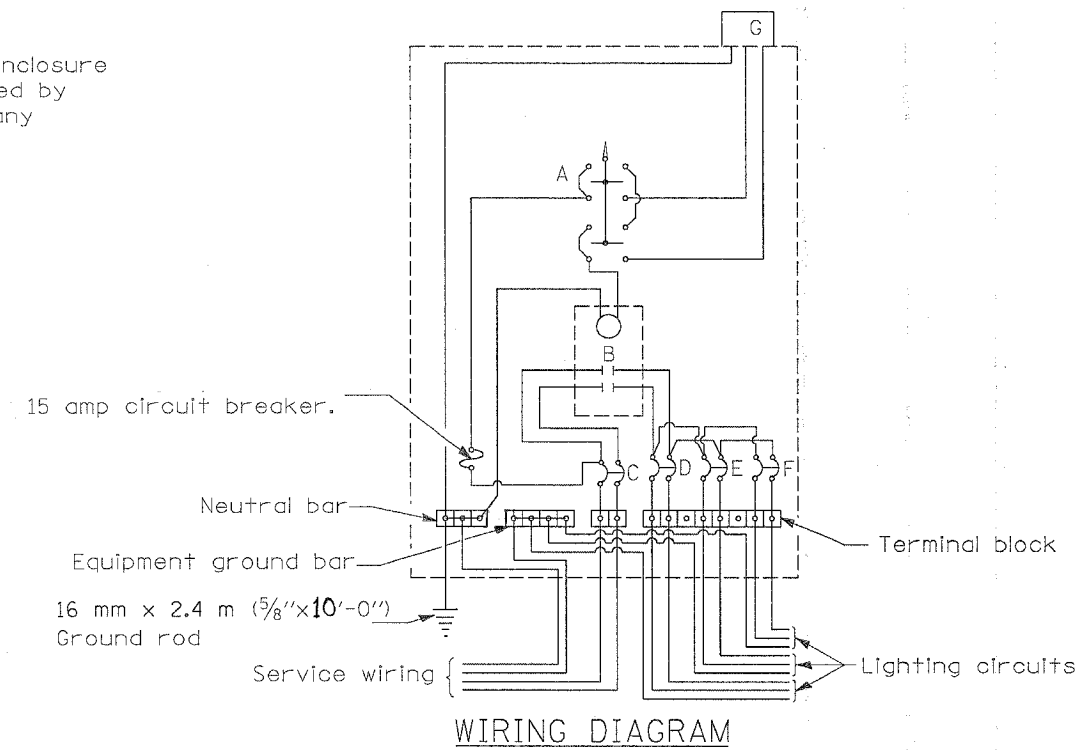
SERVICE POLE



CONTROL INSTALLATION (FRONT VIEW)



FOUNDATION (TOP VIEW)



WIRING DIAGRAM

GENERAL NOTES

Locate service pole and control installation adjacent to R.O.W. line with a minimum distance of 9 m (30') from the edge of pavement. Exact location shall be established by the Engineer.

The underground service entrance wiring shall not exceed 46 m (150'). Total aerial and underground service between the control installation and primary transformer shall not exceed 76 m (250').

Raceways shall terminate 75 (3) above top of concrete foundation.

For 480 V. systems, a 480/120 V. control transformer will be required.

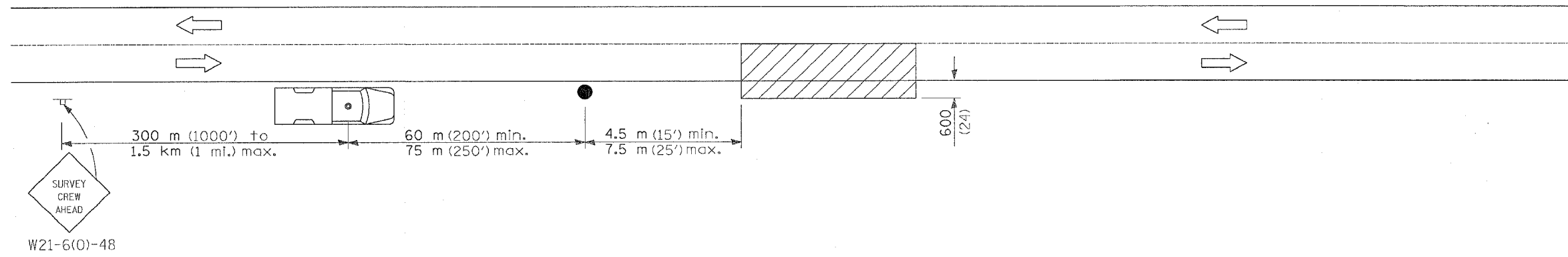
All dimensions are in millimeters unless otherwise shown.

- 240 V. SERVICE
- ⊠ 480 V. SERVICE

DATE	REVISIONS

CONTROL INSTALLATION TYPE CB-RCS-100

F.A.I. RTE.	SECTION	COUNTY	TOTAL SHEETS	SHEET NO.
80	(37-3-1)HL-1	HENRY	10	8
STA.		TO STA.		
FED. ROAD DIST. NO.	ILLINOIS	FED. AID PROJECT		



SYMBOLS

Work area

Sign on portable or permanent support

Truck with flashing amber light and dual emergency flashers

Flagger with traffic control sign

TYPICAL APPLICATIONS
Utility operations

All dimensions are in millimeters (inches) unless otherwise shown.

DATE	REVISIONS

DETAIL FOR
NIGHTTIME LIGHTING
INSPECTION

F.A. RTE.	SECTION	COUNTY	TOTAL SHEETS	SHEET NO.
80	(37-3-DHL-1)	HENRY	10	9
STA.		TO STA.		
FED. ROAD DIST. NO.		ILLINOIS FED. AID PROJECT		

LIGHT POLE HEIGHT	STEEL FOUNDATION			CONCRETE FOUNDATION		
	BOLT CIRCLE DIAMETER	SHAFT DIAMETER	SHAFT DEPTH	SHAFT DIAMETER	SHAFT DEPTH	ANCHOR ROD LENGTH *
< 9 m (30')	292 mm (11 1/2")	220 mm (8 5/8")	1.83 m (6'-0")	600 mm (24")	1.52 m (5'-0")	1.45 m (4'-9")
9.4 m - 10.7 m (31'-35')	292 mm (11 1/2")	220 mm (8 5/8")	1.83 m (6'-0")	600 mm (24")	1.67 m (5'-6")	1.60 m (5'-3")
11.9 m - 12.0 m (36'-40')	381 mm (15")	220 mm (8 5/8")	1.83 m ** (6'-0")	600 mm (24")	1.83 m (6'-0")	1.75 m (5'-9")
12.5 m - 13.7 m (41'-45')	381 mm (15")	220 mm (8 5/8")	1.83 m ** (6'-0")	600 mm (24")	1.98 m (6'-6")	1.90 m (6'-3")
14.0 m - 16.0 m (46'-50')	381 mm (15")	220 mm (8 5/8")	2.44 m (8'-0")	600 mm (24")	2.13 m (7'-0")	2.00 m (6'-9")

* Length does not include 100 (4) hook
 ** 220 mm x 2.44 m (8 5/8" x 8'-0") for Twin luminaires

Notes:

All foundations are designed to be located on slopes not exceeding 2:1 where soils have an unconfined compressive strength of at least 1.0 TSF. The contractor shall verify the soil strength during drilling for concrete foundations or by monitoring installation resistance on steel foundations and notify the engineer if other conditions are encountered.

Notes:

Wireway may be on front, back, or side of foundation as required by the trenching. Place door of transformer base on wireway side to minimize the number of unit duct bends.

Top of schedule 40 PVC 125 (5) I.D. PVC wiring window, shall be flush with the top of foundation for drainage.

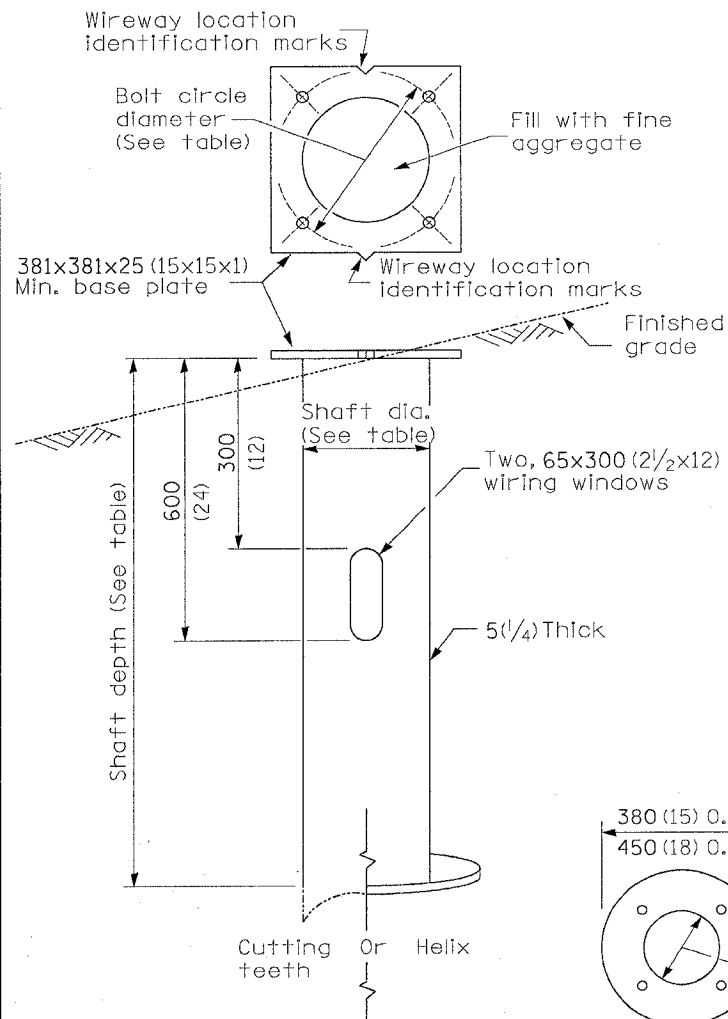
75 (3) Min. concrete cover on all steel

25 (1) Ø Steel anchor rod with 230 (9) of threads. See table for the required bolt circle diameter.

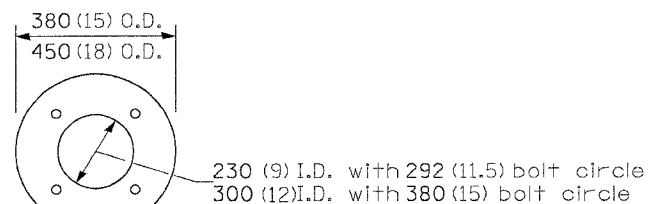
Anchor rod shall extend through nut 10 to 25 (3/8 to 1). For barrier or foundations located behind guardrail, use self-locking nut and flat washer. Do not use lock washer. Length above foundation shall be adjusted to accommodate breakaway devices furnished by the contractor for a specific installation.

Use dirt removed from foundation to meet 1.5 m (5 ft.) chord fill around foundation top. Grade dirt level with bottom of concrete chamfer.

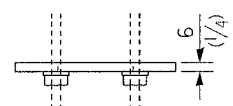
*** If the required anchor rod length above top of foundation is less than 75 (3), anchor rods may be lowered below 150 (6)



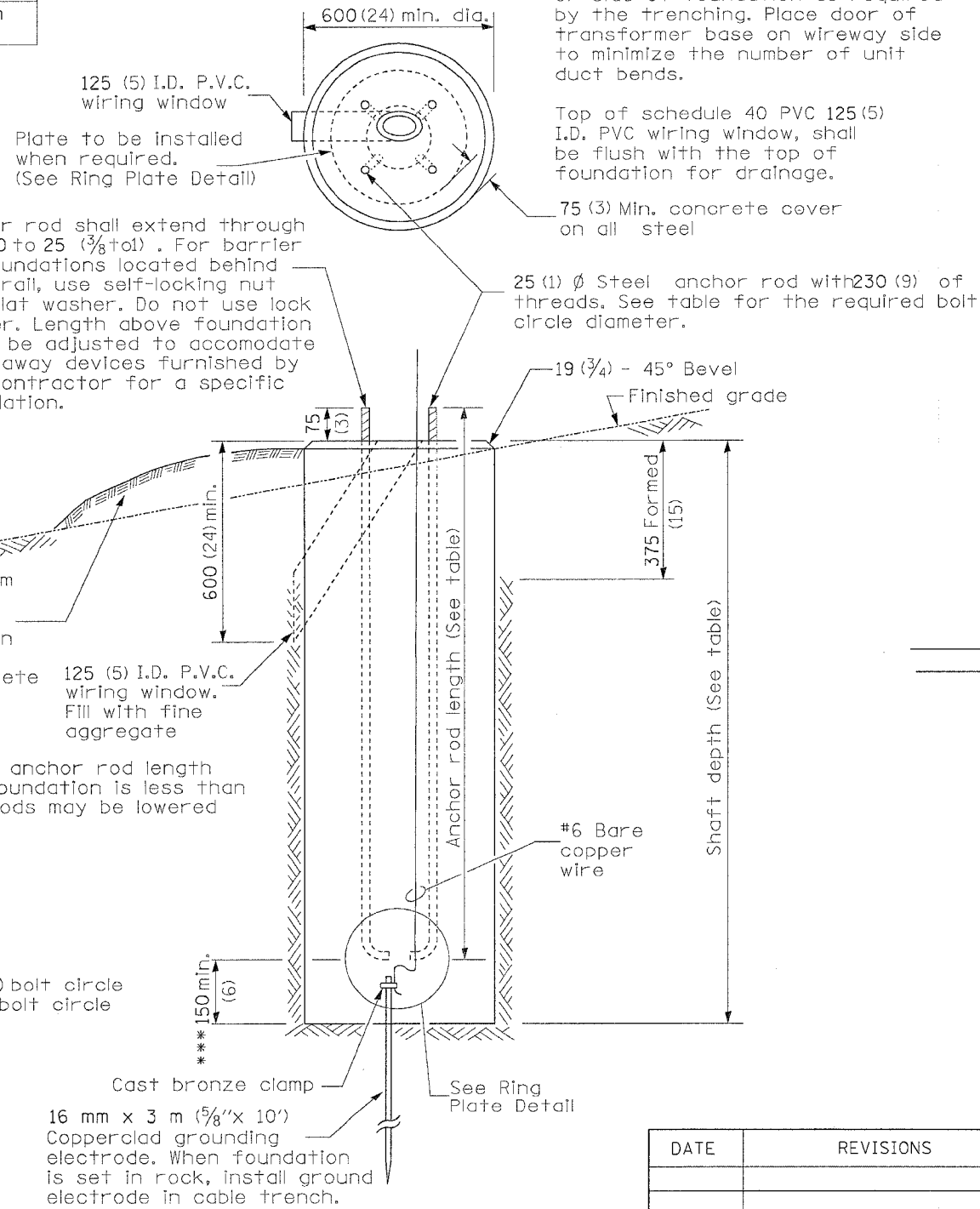
STEEL FOUNDATION



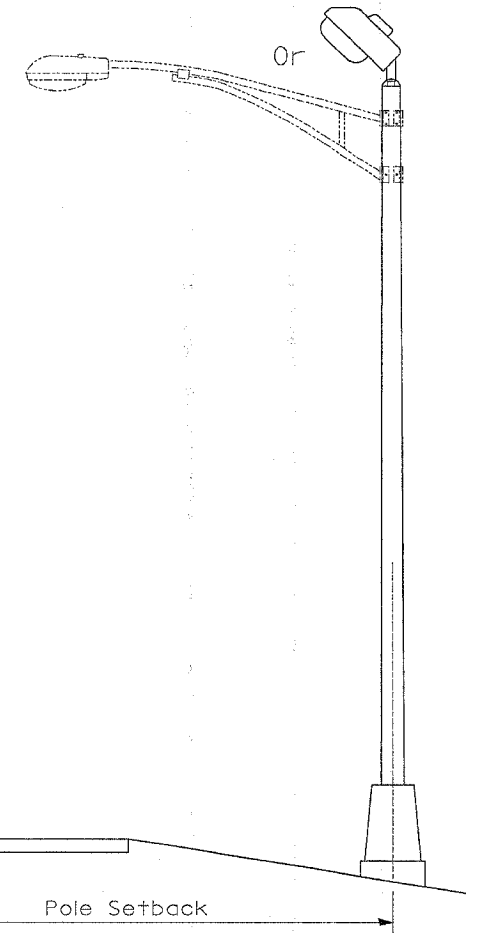
TOP VIEW



RING PLATE DETAIL
 (When rock is encountered and foundation is shallower)



CONCRETE FOUNDATION



Pole Foundation Setback:

For horizontal mounted luminaires, setback shall be a minimum of 6.1 m (20') from edge of pavement.

For vertical mount luminaires, setback shall be a minimum of 9 m (30') from edge of pavement. Poles shall be located 1.5 m (5') behind guardrail or other protective barriers, or as directed by the Engineer.

All dimensions are in millimeters (inches) unless otherwise shown.

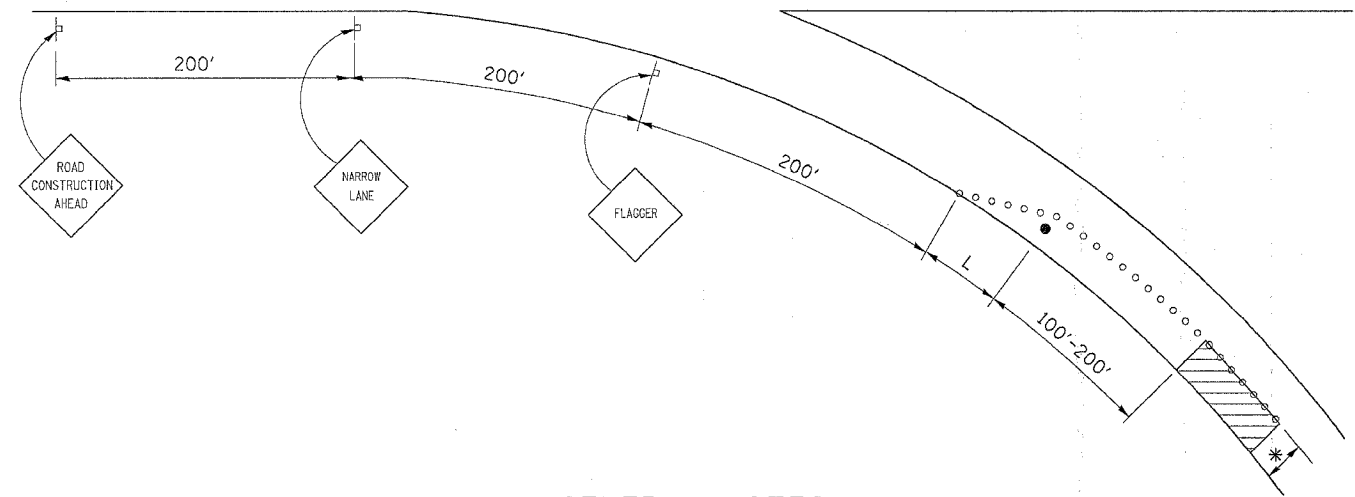
DATE	REVISIONS

LIGHT POLE FOUNDATION

LGT836

F.A. 1	SECTION	COUNTY	TOTAL SHEETS	SHEET NO.
RTE. 80	(37-3-1)HL-1	HENRY	10	10
STA.		TO STA.		
FED. ROAD DIST. NO.	ILLINOIS	FED. AID PROJECT		

TRAFFIC CONTROL AND PROTECTION FOR RAMPS



GENERAL NOTES

CONES AT 8 m (25') CENTERS FOR 105 m (350'). ADDITIONAL CONES MAY BE PLACED AT 15 m (50') CENTERS. WHEN DRUMS OR BARRICADES ARE USED, THE INTERVAL DEVICES MAY BE DOUBLED.

* WIDTH OF CLOSURE SHOWN ON RAMP PATCHING SCHEDULE OR AS DIRECTED BY ENGINEER.

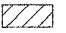




L = CLOSURE WIDTH * TAPER RATIO IS SPEED LIMIT / 1 (POSTED OR ADVISORY)

ANY VISIBLE REPAIRS REQUIRED ON THE SHOULDER BECAUSE OF TRAFFIC SHALL BE PROVIDED AT THE CONTRACTORS EXPENSE. THE ENGINEER SHALL BE THE SOLE JUDGE FOR ANY SHOULDER REPAIRS.

THE RAMP SHALL BE COMPLETELY OPEN TO TRAFFIC BY NIGHTFALL.

TRAFFIC CONTROL AND PROTECTION FOR RAMPS SHALL BE INCLUDED IN THE COST OF STANDARD 701101

SYMBOLS

-  WORK AREA
-  SIGN
-  BARRICADE OR DRUM
-  CONE, DRUM OR BARRICADE
-  FLAGGER WITH TRAFFIC CONTROL SIGN

ALL DIMENSIONS ARE IN MILLIMETERS (INCHES) UNLESS OTHERWISE NOTED.

PLOT DATE = Wed Dec 21 13:17:44 2005
 PLOT SCALE = 50.000000 / IN.
 REFERENCE = #REF#