

ROUTE NO.	SECTION	COUNTY	TOTAL SHEETS	SHEET NO.
FAS 227	105BR-2	HENRY	31	14
FED. ROAD DIST. NO. 7	ILLINOIS	FED. AID PROJECT-		

SHEET NO. 2  
16 SHEETS

Contract #64B25

**GENERAL NOTES**

All structural steel shall conform to AASHTO classification M-270 Gr. 36, unless otherwise noted.

Reinforcement bars shall conform to the requirements of AASHTO M 31 or M 322 Grade 60.

Plan dimensions and details relative to existing structure have been taken from existing plans and are subject to nominal construction variations. It shall be the Contractor's responsibility to verify such dimensions and details in the field and make necessary approved adjustments prior to construction or ordering of materials. Such variations shall not be cause for additional compensation for a change in the scope of the work, however, the Contractor will be paid for the quantity actually furnished at the unit price for the work.

All Construction joints shall be bonded.

The cut strands at each beam end shall be given two coats of zinc dust spray or paint meeting the requirements of ASTM A780. The zinc dust spray or paint shall be applied before corrosion appears and allowed to dry according to the manufacturer's specifications prior to another coat of zinc. A concrete sealer meeting the requirements of Section 587 of the Standard Specifications shall be applied to the exterior face and 9" in on the underside of the fascia beams. The sealer shall be applied after visible crack growth has subsided. This work shall be performed by the producer and included with the cost of the beam.

The minimum thickness of the Concrete overlay shall be 5" and varies as required to adjust for the new profile grade and beam camber.

The Contractor is advised that the existing PPC Deck Beams are in a deteriorated condition with reduced load carrying capacity. It is the Contractor's responsibility to account for the condition of the beams when developing construction procedures for removal and replacement of the superstructure.

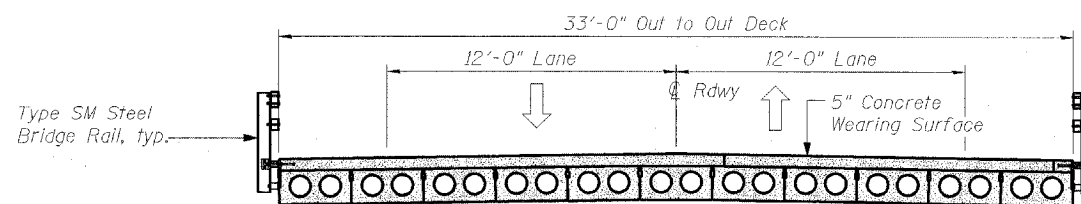
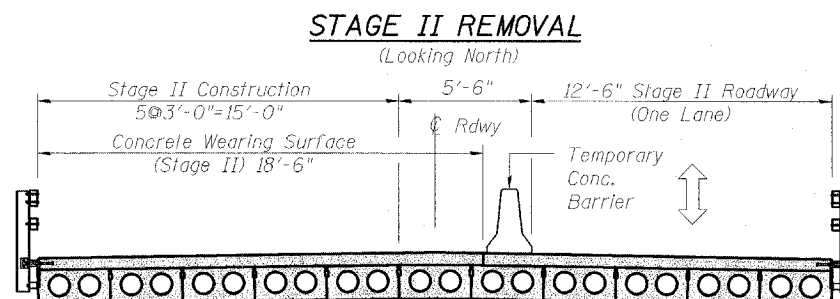
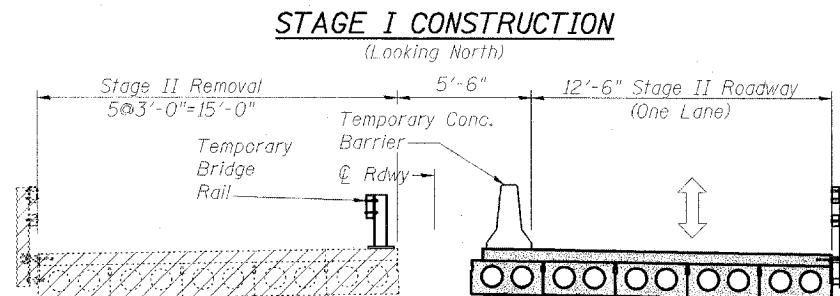
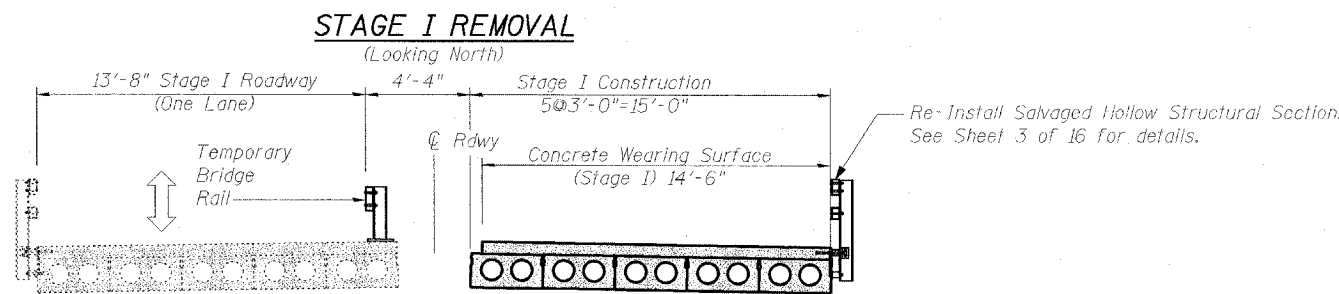
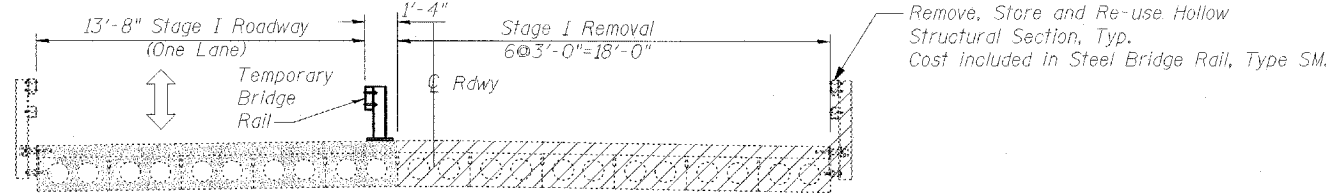
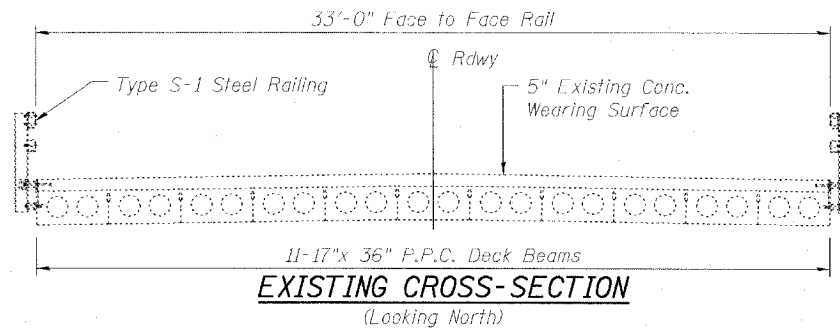
Repair of the abutments and pier caps shall be completed prior to placement of the new deck beams.

If the Contractor's procedure for existing beam removal or replacement of new beams involves placement of cranes or other heavy equipment on new beams, a detailed procedure shall be submitted to the Engineer for approval. The procedure shall include calculations, prepared and sealed by an Illinois Licensed Structural Engineer, verifying that the equipment and procedure used will not overstress the new beams. To distribute load to multiple beams and protect the concrete, in all cases a double layer mat of heavy timbers shall be used at all times under crane tracks or wheels and any outriggers in the down position. If necessary, shims shall be used under the crane mat to ensure uniform contact with the underlying beams. Prior to placement of the timber mats the following shall be done: placement and tightening of transverse tie assemblies, grouting and curing the dowel rods 24 hours minimum and grouting and curing the shear keys. A temporary means of lateral restraint will be required for fascia beams at expansion ends of beams to prevent movement of the beams.

All structural steel shall be painted with inorganic zinc rich primer per AASHTO M300, Type L. Cost included with Furnishing and Erecting Structural Steel.

No in-stream work will be allowed on this project.

Existing name plate shall be cleaned and relocated adjacent to new name plate. Cost included with "Name Plates."

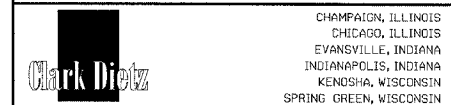


**TOTAL BILL OF MATERIAL**

ITEM	UNIT	SUPER	SUB	TOTAL
Removal of Existing Superstructures	Each	1		1
Precast Prestressed Concrete Deck Beams (17" Depth)	Sq. Ft.	2,518		2,518
Reinforcement Bars, Epoxy Coated	Pound	3,810		3,810
Concrete Wearing Surface, 5"	Sq. Yd.	280		280
Bridge Deck Grooving	Sq. Yd.	262		262
Steel Bridge Rail, Type SM	Foot	151		151
Name Plates	Each	1		1
Silicone Joint Sealer, 1/2"	Foot	77		77
Formed Concrete Repair, (Depth equal to or less than 5")	Sq. Ft.		126	126
Epoxy Crack Sealing	Foot		56	56
Asbestos Bearing Pad Removal	Each	24		24
Temporary Bridge Rail	Foot	77		77
Furnishing & Erecting Structural Steel	Pound	785		785
Protective Coat	Sq. Yd.	295		295

**GENERAL NOTES AND STAGE CONSTRUCTION**

F.A.S. ROUTE 227 (OSCO ROAD)  
OVER CAMP CREEK  
SECTION 105BR-2  
HENRY COUNTY  
STATION 65+47.16  
STRUCTURE NO. 037-0083



REVISIONS	
NAME	DATE

DESIGNED BY: S.L.D. PROJECT NO: 102382  
DRAWN BY: M.E.W. DATE: 12/05  
CHECKED BY: M.M.  
APPROVED BY: M.M.  
ACTIVITY: DETAILS

DRAWING NUMBER

S-2