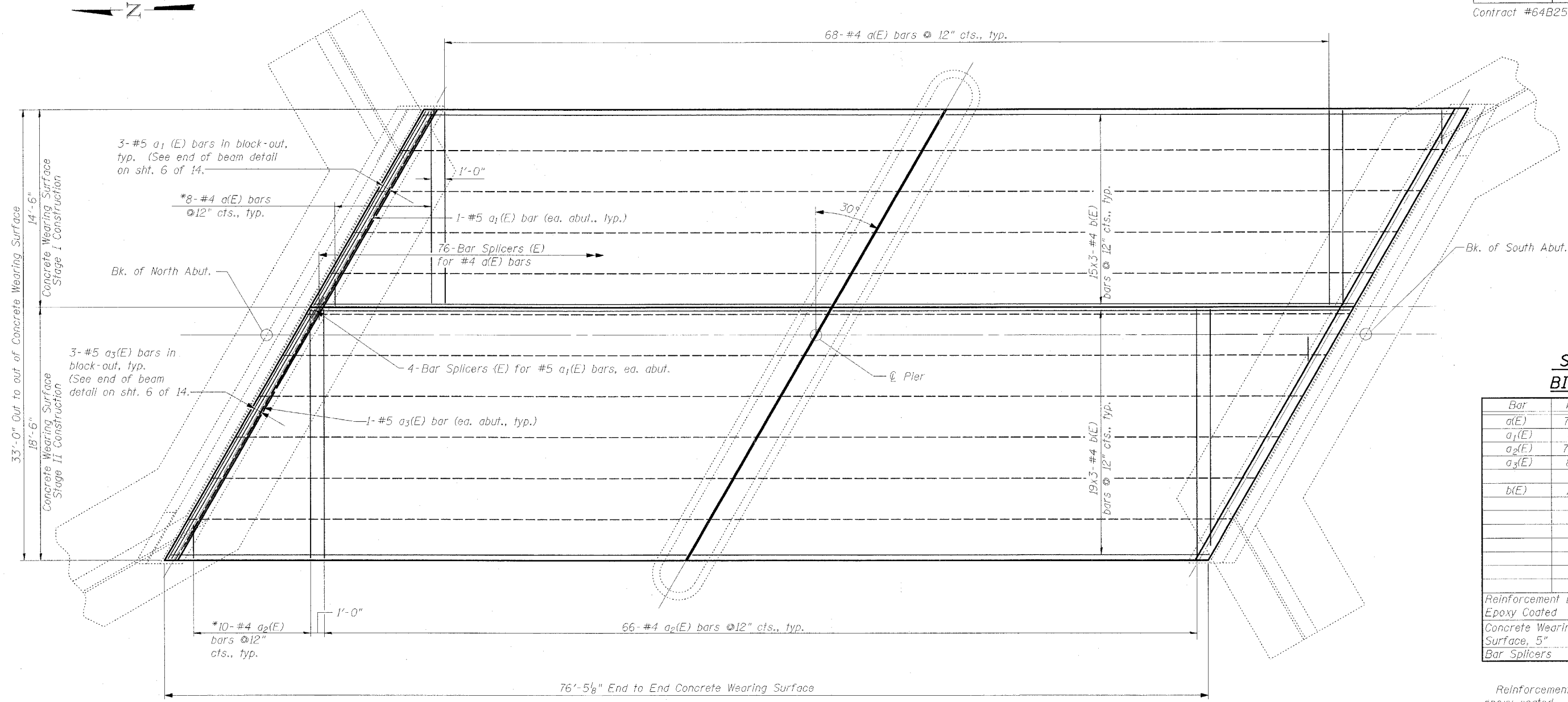


Contract #64B25



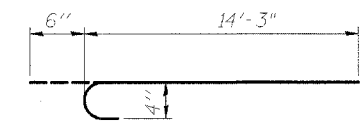
PLAN

*Order a(E) bars full length. Cut to fit skew and use remainder of bars in opposite end.

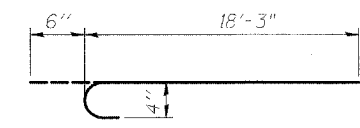
**SUPERSTRUCTURE
BILL OF MATERIAL**

Bar	No.	Size	Length	Shape
a(E)	76	#4	14'-9"	C
a ₁ (E)	8	#5	16'-6"	—
a ₂ (E)	76	#4	18'-9"	C
a ₃ (E)	8	#5	21'-1"	—
b(E)	102	#4	26'-5"	—
Reinforcement Bars, Epoxy Coated			Pound	3,810
Concrete Wearing Surface, 5"			Sq. Yd.	280
Bar Splicers			Each	84

Reinforcement bars designated (E) shall be epoxy coated.
For details of Bar Splicers, see sheet 14 of 14.
Bars indicated thus 1 x 2-#5 etc. indicates 1 line of bars with 2 lengths per line.



a(E) BAR

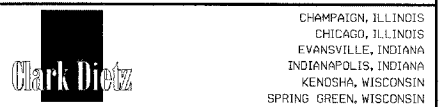


a₂(E) BAR

MIN. BAR LAP
#4 Bar = 1'-8"
#5 Bar = 2'-2"

CONCRETE WEARING SURFACE

F.A.S. ROUTE 227 (OSCO ROAD)
OVER CAMP CREEK
SECTION 105BR-2
HENRY COUNTY
STATION 65+47.16
STRUCTURE NO. 037-0083



REVISIONS	
NAME	DATE

DESIGNED BY: S.L.D. PROJECT NO: 102302
DRAWN BY: MEW DATE: 12/05
CHECKED BY: M.M.
APPROVED BY: M.M.
ACTIVITY: INITIALS

DRAWING NUMBER
S-4