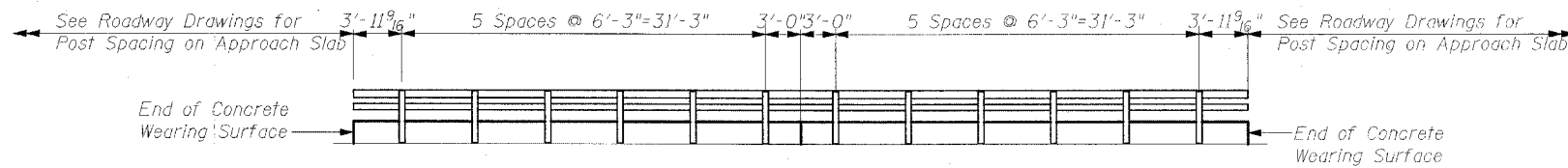
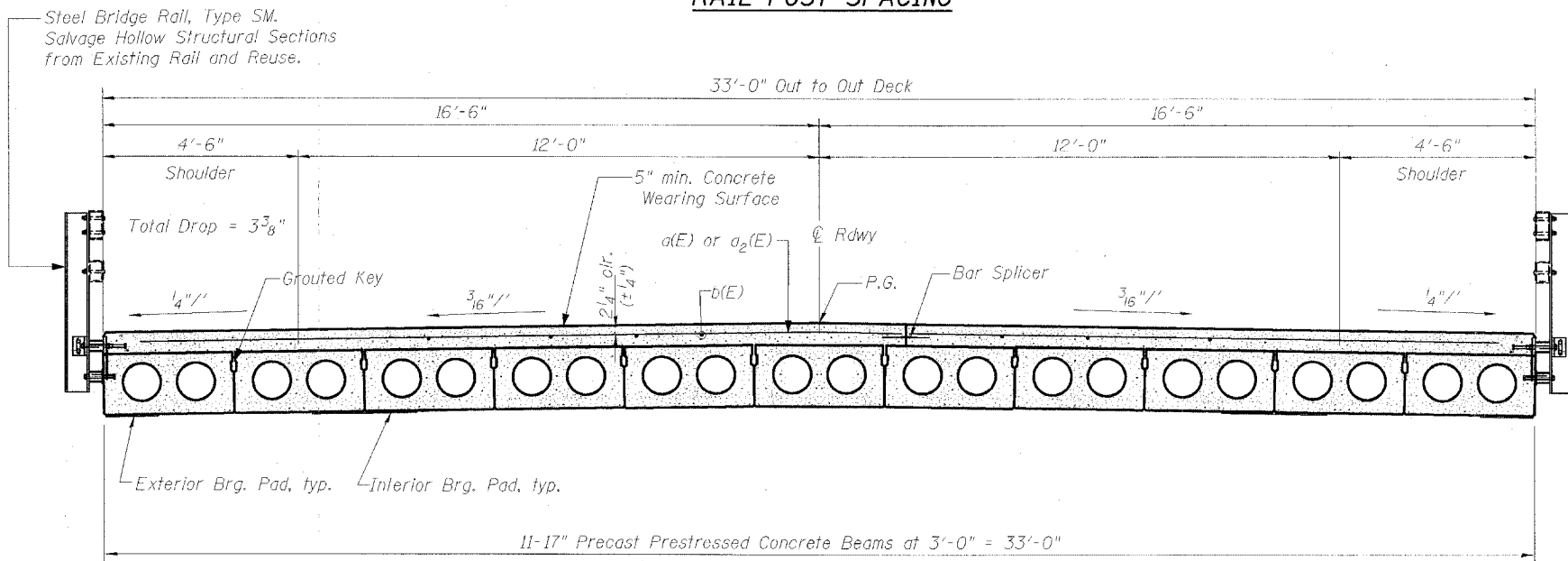


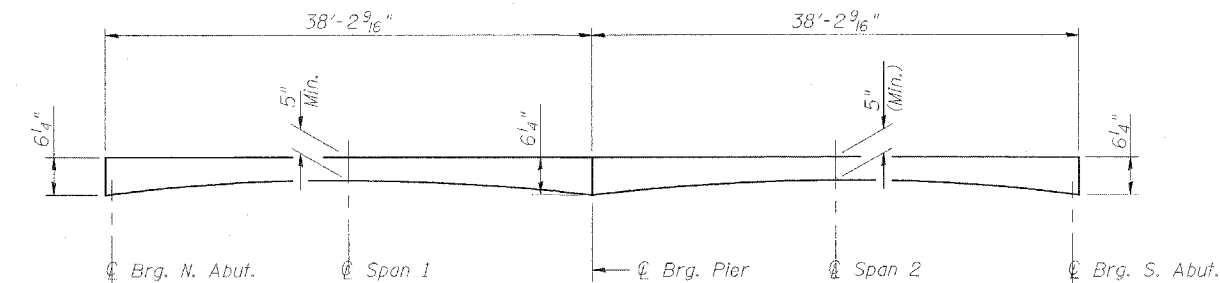
Contract #64B25



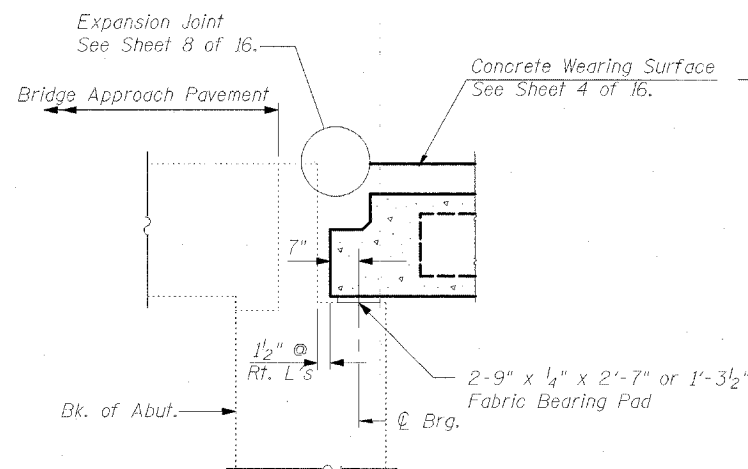
RAIL POST SPACING



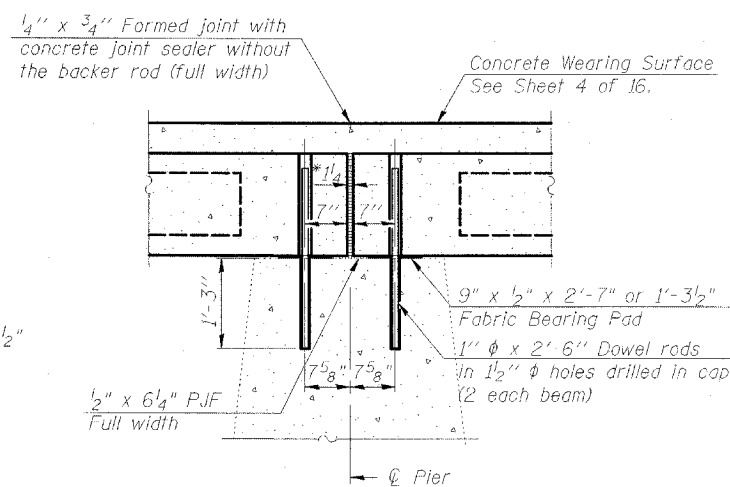
FULL CROSS SECTION



REINFORCED CONCRETE WEARING SURFACE PROFILE

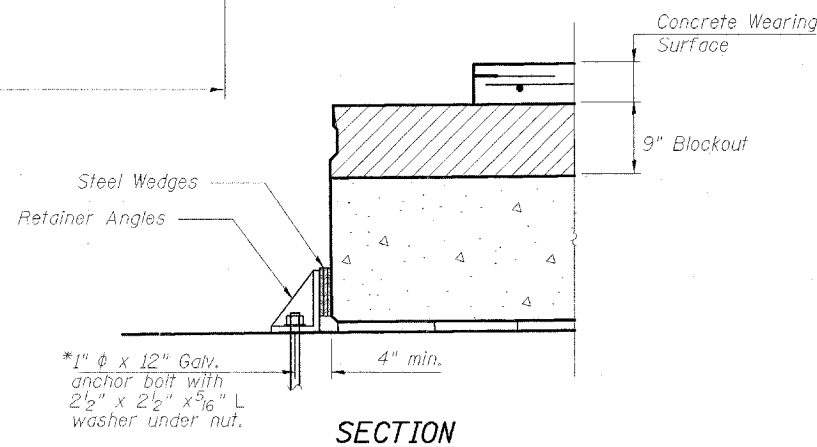


SECTION THRU ABUTMENTS

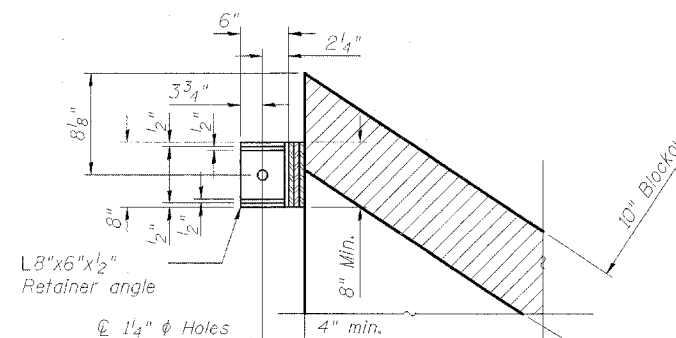


SECTION THRU PIER

* 1/4" Jt. shall be filled with non-shrink grout. 1/4" dimension may vary to accommodate tolerance in beam lengths.
Dimensions at Rt. L's



SECTION



PLAN

SIDE RETAINER AT EXPANSION JOINT

** Anchor bolts shall be approved threaded rod and placed in drilled holes and grouted in place. Cost of retainer and accessories are included with Precast Prestressed Concrete Deck Beams.
Note: After block-outs are poured and cured the retainer angles shall be removed. Anchor bolts may be left in place.

Notes :

After beams have been erected, holes shall be drilled into substructure and anchor dowels placed. Dowel holes shall be filled with non-shrink grout to top of beam and allowed to cure min. 24 hrs. prior to grouting the shear keys.
All horizontal dimensions are at right angles to beam ends. See sheet 5 of 16 for bearing pad details.
Existing Dowel Rods shall be cut off and ground flush with the top of the existing concrete. Cost to be included in the cost of "Removal of Existing Superstructures".

SUPERSTRUCTURE DETAILS

F.A.S. ROUTE 227 (OSCO ROAD)
OVER CAMP CREEK
SECTION 105BR-2
HENRY COUNTY
STATION 65+47.16
STRUCTURE NO. 037-0083



CHAMPAIGN, ILLINOIS
CHICAGO, ILLINOIS
EVANSVILLE, INDIANA
INDIANAPOLIS, INDIANA
KENOSHA, WISCONSIN
SPRING GREEN, WISCONSIN

REVISIONS	
NAME	DATE

NOTE: DIMENSIONAL DATA IS NOT TO BE OBTAINED BY MEASURING ANY PORTION OF THIS DRAWING.

DESIGNED BY: S.L.D. PROJECT NO: 102302
DRAWN BY: MEW DATE: 12/85
CHECKED BY: M.M.
APPROVED BY: M.M.
ACTIVITY: INITIALS

DRAWING NUMBER

S-7