

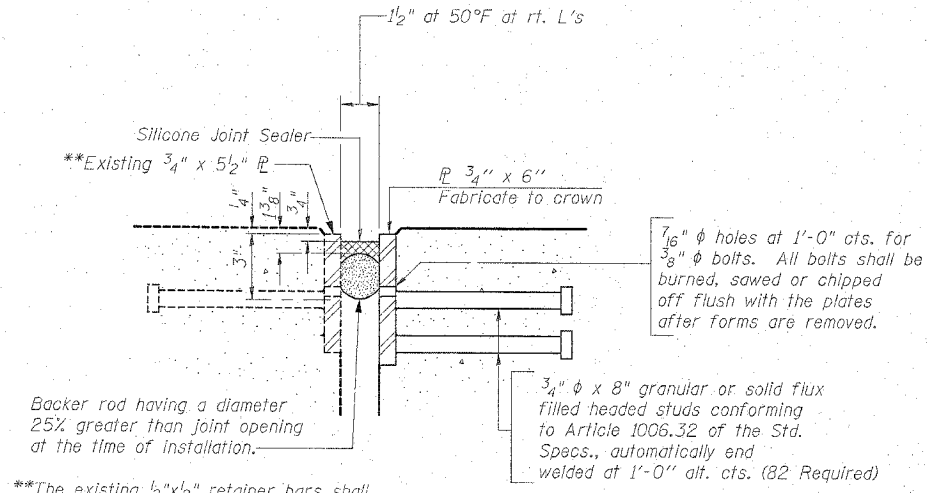
ROUTE NO.	SECTION	COUNTY	SHEET NO.	SHEET NO.
F.A. 308	109BR-4	WHITESIDE	47	25
FED. ROAD DIST. NO. 7		ILLINOIS	FED. AID PROJECT	

Contract #64B29

GENERAL NOTES

Furnish steel plates in segments of 20 feet maximum length. Maximum space between installed segments shall be 3/16". Seal space with silicone sealer suitable for structural steel.

After fabrication all surfaces of the steel plates shall be given one coat of paint specified for Structural Steel.



**The existing 1/2"x1/2" retainer bars shall be removed. The existing 3/4"x5/2" surface shall be ground smooth, sand blasted, given one coat of paint specified for structural steel. Cost to be included with Furnishing & Erecting Structural Steel.

SECTION THRU EXPANSION JOINT @ N. ABT.

BILL OF MATERIAL

Item	Unit	Total
Silicone Joint Sealer, 1/2"	foot	41

SILICONE JOINT SEALER

F.A. 308 (IL 84)
 OVER SPRING CREEK
 SEC. 109 BR-4
 WHITESIDE COUNTY
 STATION 171+60.57
 STRUCTURE NO. 098-0023

Clark Dietz
 CHAMPAIGN, ILLINOIS
 CHICAGO, ILLINOIS
 EVANSVILLE, INDIANA
 INDIANAPOLIS, INDIANA
 KENOSHA, WISCONSIN
 SPRING GREEN, WISCONSIN

REVISIONS		NOTE: DIMENSIONAL DATA IS NOT TO BE OBTAINED BY SCALING AND PORTION OF THIS DRAWING.	DRAWING NUMBER
NAME	DATE		
			S-9