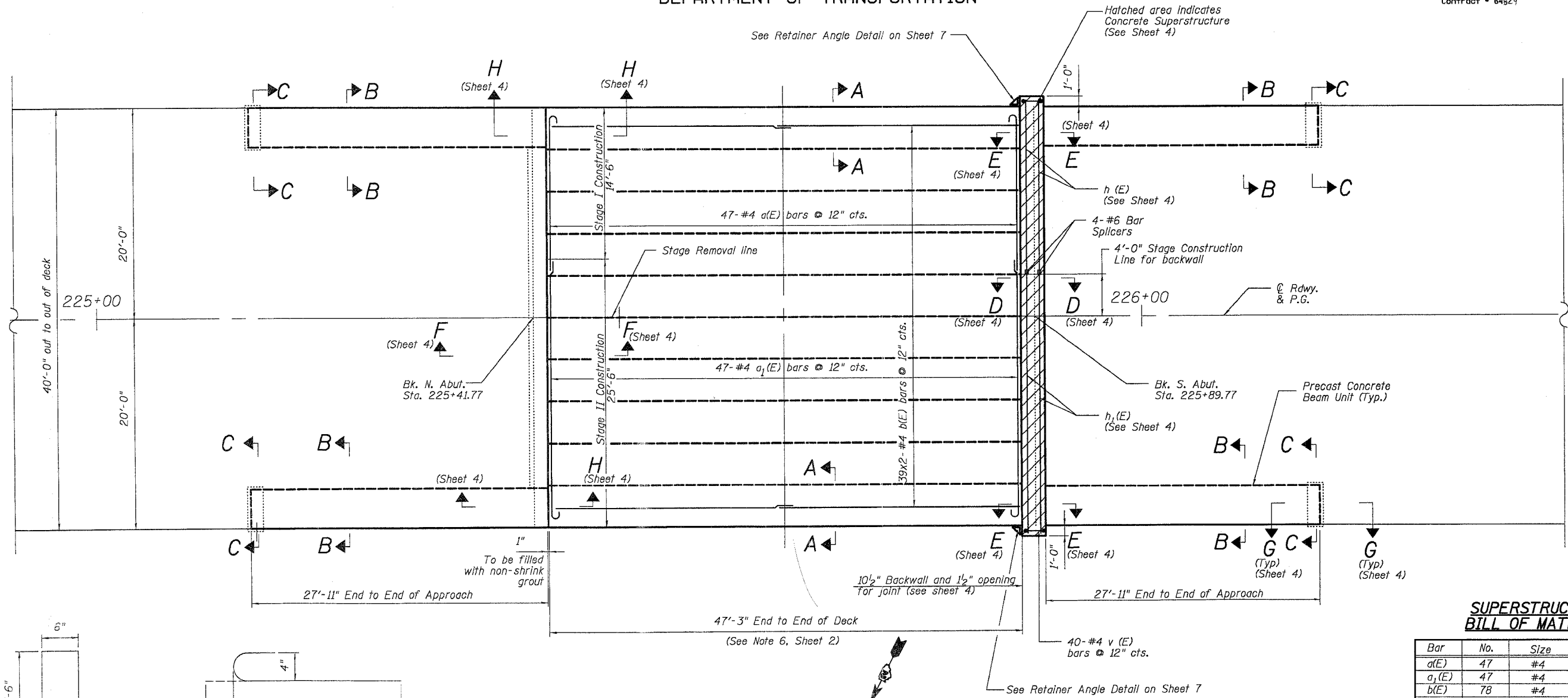
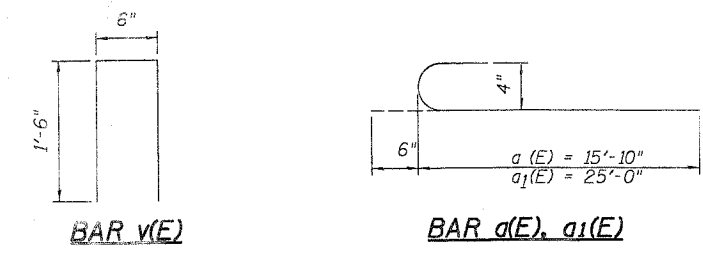


STATE OF ILLINOIS
DEPARTMENT OF TRANSPORTATION

ROUTE NO.	SECTION	COUNTY	TOTAL SHEETS	SHEET NO.
FAP RT.308	109 BR-3	Whiteside	47	32
STA.		TO STA.		
Contract # 64529		Sheet 3 of 12		

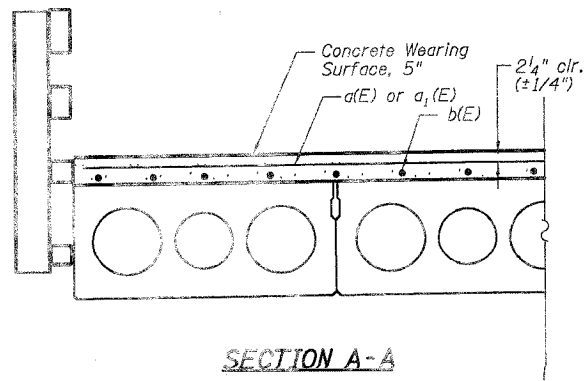


PLAN

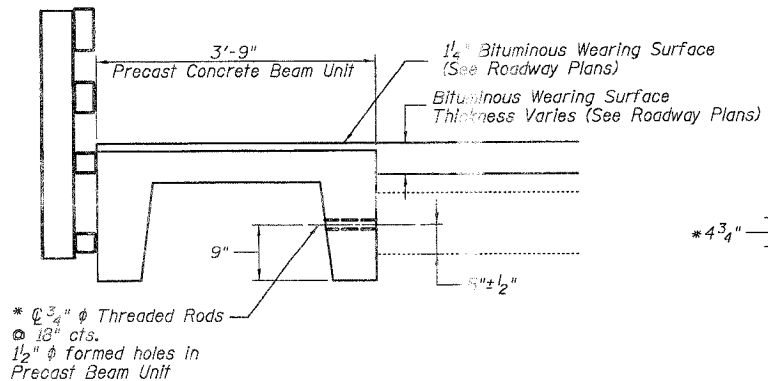


BAR v(E)

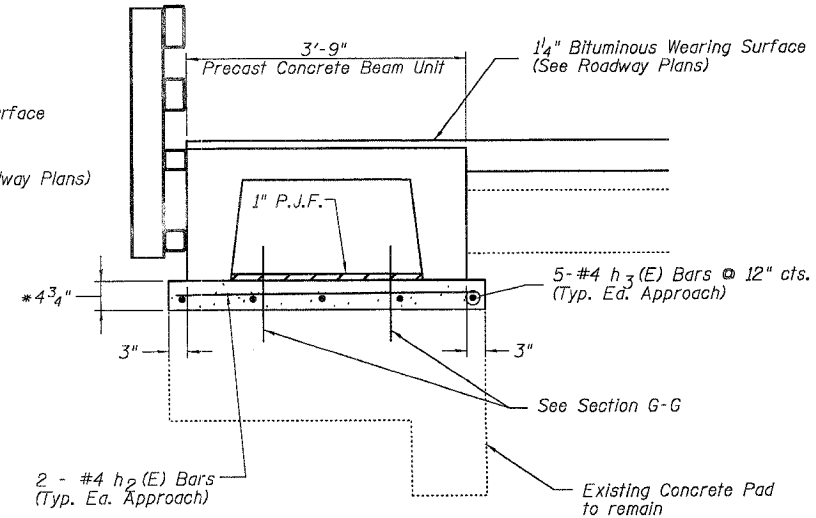
BAR a(E), a1(E)



SECTION A-A



SECTION B-B



SECTION C-C

SUPERSTRUCTURE
BILL OF MATERIAL

Bar	No.	Size	Length	Shape
a(E)	47	#4	16'-4"	—
a1(E)	47	#4	25'-6"	—
b(E)	78	#4	24'-4"	—
h(E)	4	#6	16'-10"	—
h1(E)	4	#6	24'-10"	—
h2(E)	18	#4	3'-11"	—
h3(E)	30	#4	6"	—
h4(E)	10	#4	1'-4"	—
v(E)	40	#4	3'-6"	□
Concrete Removal			Cu. Yd.	2.2
Reinforcement Bars, Epoxy Coated			Pound	3,000
Concrete Wearing Surface 5"			Sq. Yd.	2.10
Concrete Superstructure			Cu. Yd.	2.4
Precast Concrete Beam Unit			Each	4
Bridge Approach Shoulder Removal			Sq. Yd.	47
Protective Coat			Sq. Yd.	2.10
Bridge Deck Grooving			Sq. Yd.	2.00
Bar Splicers			Each	4

Notes:
For remainder of superstructure details, see sheet 5 of 12.
Reinforcement bars designated (E) shall be epoxy coated.
Bars indicated thus 39 x 2-#4 etc. indicates 39 lines of bars with 2 lengths per line.

Min. Bar Lap #4 bar = 1'-8"

DESIGNED	MCH
CHECKED	RGD
DRAWN	MDJ
IN CHARGE	NRF

* Drill and grout in 9" min. deep holes in accordance with Article 584 of the Std. Specifications. Provide nut and beveled washer.

* Additional concrete to be paid for under the item Concrete Structures (Typ.)

SUPERSTRUCTURE
IL. RT. 84
OVER CEDAR CREEK
F.A.P. ROUTE 308 - SECTION 109 BR-3
WHITESIDE COUNTY
STA. 225+65.77
SN 098-0022

