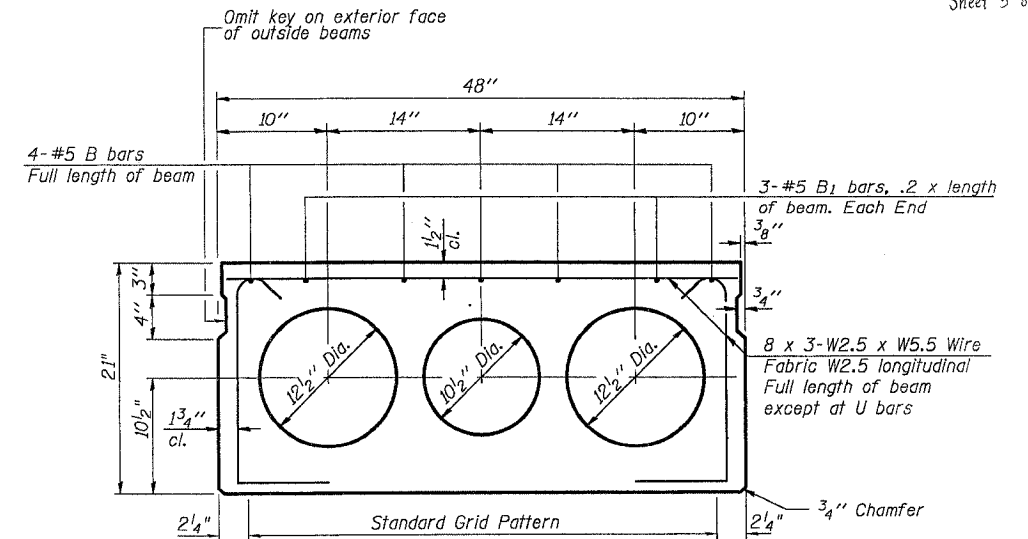
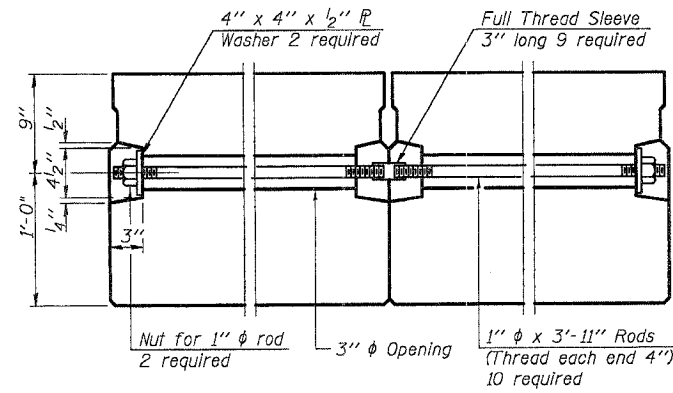
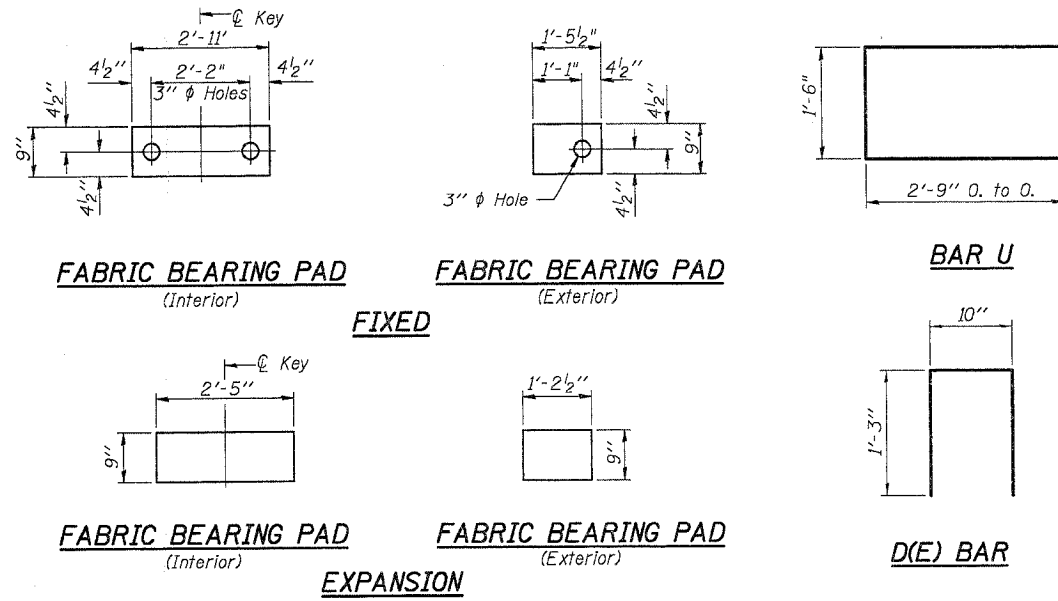


STATE OF ILLINOIS
DEPARTMENT OF TRANSPORTATION

ROUTE NO.	SECTION	COUNTY	STATIONING	SHEET NO.
FAP RT.308	109 BR-3	Whiteside	47	34

Contract # 64829

Sheet 5 of 12



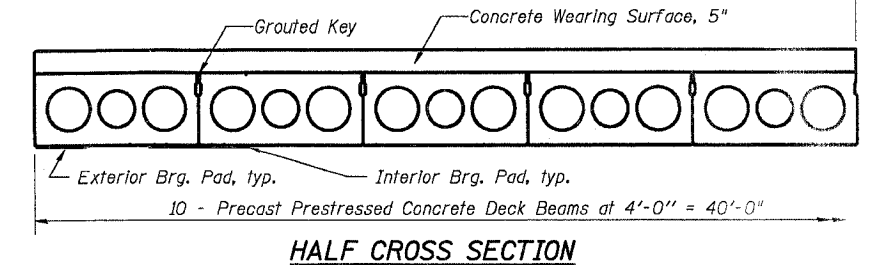
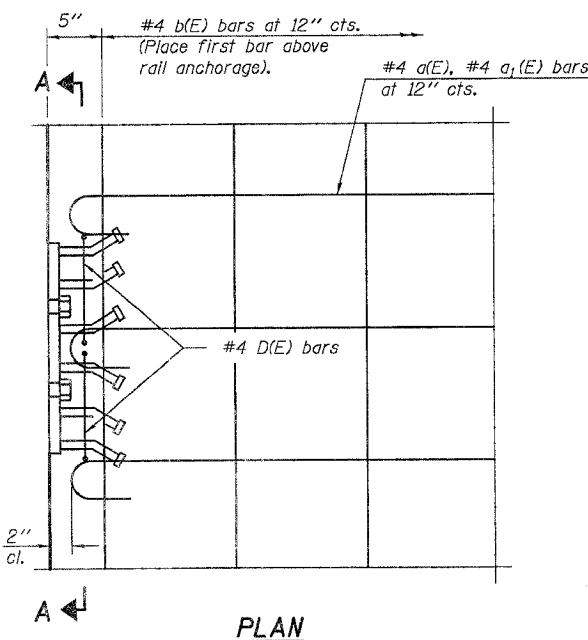
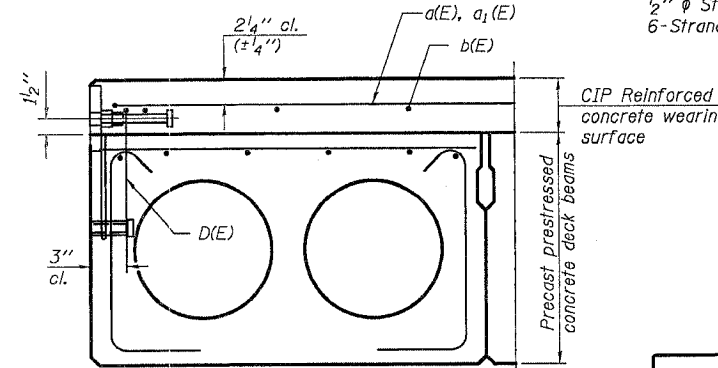
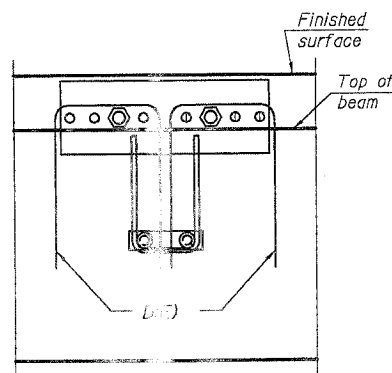
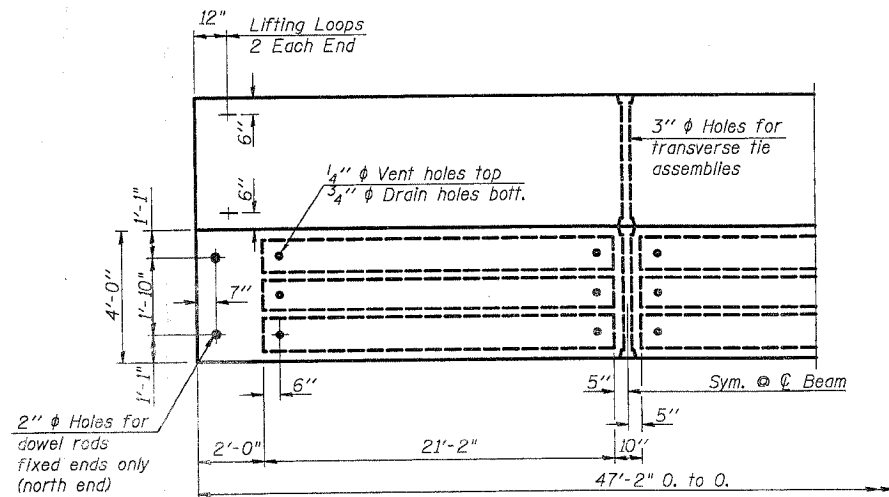
SECTION THRU INTERIOR BEAMS
1/2" φ Strands, Each Strand Stressed to 30,900 Lbs.
6-Strands 1 3/4" up, 10-Strands 3/4" up, 2-Strands 6" up

Note:
Place strands symmetrically about C of beam.

BILL OF MATERIAL

ITEM	UNIT	TOTAL
Precast Prestressed Conc. Deck Bms., 21"	Sq. Ft.	1,887

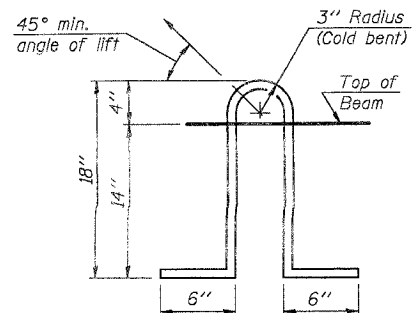
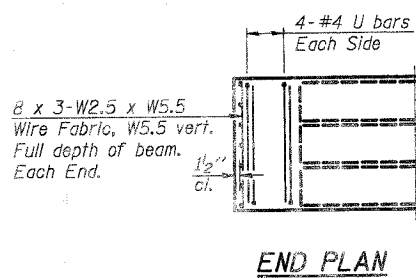
Symm. About C Rdwy.



NOTES

Prestressing steel shall be uncoated high strength, low relaxation 7-wire strand, Grade 270. The nominal diameter shall be 1/2" and the nominal cross-sectional area shall be 0.153 sq. in. Lifting loops shall be 2 - 1/2" φ-270 ksi strands, as shown.
The 1" φ rods in the transverse tie assembly shall be tightened to a snug fit and the threads set. Pockets that receive transverse tie bar on outside shall be filled with grout after transverse tie assembly is in place.
Non prestressing steel shall conform to AASHTO M-31, or M-322 Grade 60.
The bearing seat surfaces shall be adjusted by shimming to assure firm and even bearing. Two 1/2" fabric adjusting shims of the dimensions of the Exterior Bearing Pad shall be provided for each bearing.
Keyway surfaces shall be cleaned to remove form oil or other bond breaking material prior to shipment of the beams. Cleaning shall be done by sandblasting the keyway areas between top of the beam and the bottom edge of the key.
Corrosion Inhibitor, as covered in the Special Provisions, shall be used in the concrete for precast prestressed concrete deck beams.
Required Release Strength, f'ci, shall be 4,000 p.s.i.

Notes:
The rail anchorage shall be cast with the beam and the wearing surface shall be cast in the field. Formwork necessary for the wearing surface may be secured utilizing the bottom rail anchorage inserts and/or additional inserts cast into the beam. Drilling into the beam will not be permitted.



LIFTING LOOP DETAIL

DESIGNED	MGH
CHECKED	RGD
DRAWN	MDJ
CHECKED	NRF



SUPERSTRUCTURE DETAILS
IL. RT. 84
OVER CEDAR CREEK
F.A.P. ROUTE 308 - SECTION 109 BR-3
WHITESIDE COUNTY
STA. 225+65.77
SN 098-0022