

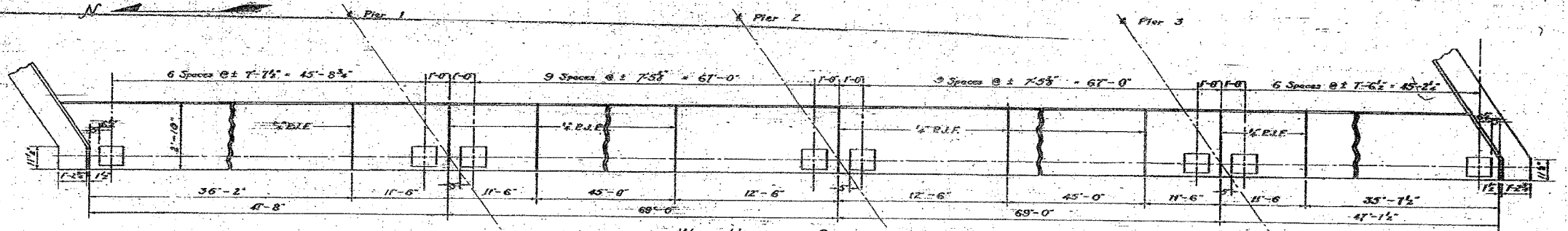
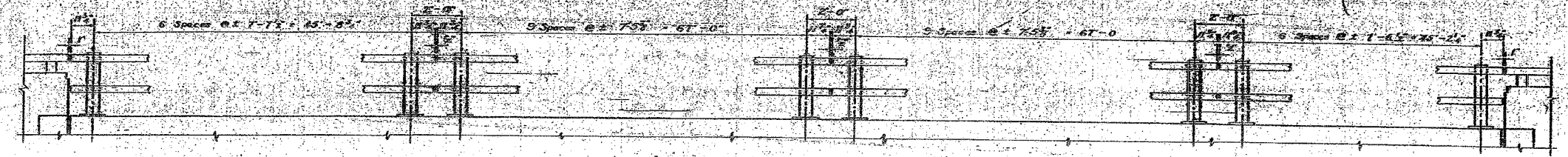
STATE OF ILLINOIS
DEPARTMENT OF TRANSPORTATION

F.A.I. RTE.	SECTION	COUNTY	TOTAL SHEETS	SHEET NO.
80	32-3HBR-1	GRUNDY	88	57
STA.		TO STA.		
FED. ROAD DIST. NO.		ILLINOIS FED. AID PROJECT		

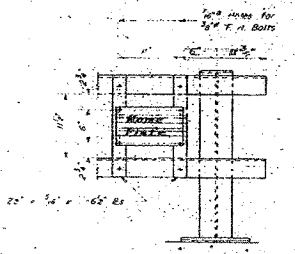
SHEET NO. B30
OF 35 SHEETS

STATE OF ILLINOIS
DEPARTMENT OF PUBLIC WORKS & BUILDINGS
DIVISION OF HIGHWAYS

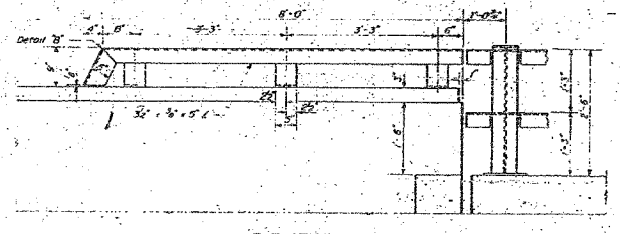
DATE	BY	REVISION



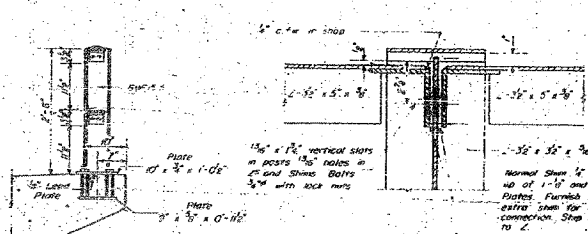
WEST HANDRAIL SPACING
East Handrail Similar Except Opposite Hand
Note - Rail posts shall be vertical.



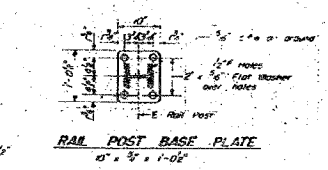
NAME PLATE CONNECTION DETAIL
Erect Name Plate @ N.W. Corner Only



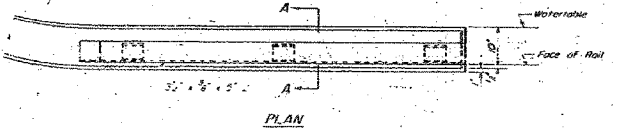
ELEVATION



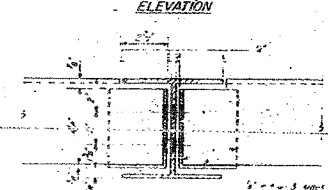
SECTION B-B



RAIL POST BASE PLATE



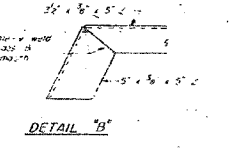
PLAN



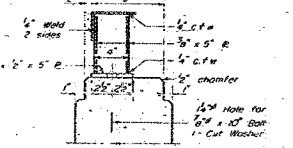
ELEVATION



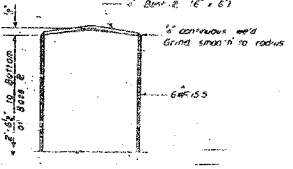
ANCHOR DETAILS



DETAIL B



SECTION A-A



CAP DETAIL

BILL OF MATERIAL

Material	Quantity	Notes
48" x 36" x 1/2" Plate	400	Note show 'West Handrail' includes both the one angle and the two angle (2)

ALTERNATE "A"
HANDRAIL DETAIL
BRIDGE OVER F.A.I. RT. 6
F.A.I. RT. 6 SEC. 32-3HBR-1
GRUNDY COUNTY
STA. 1266 + 24.59 (FAL6)

FOR INFORMATIONAL
USE ONLY

DESIGNED	T. Tambo	DATE	NOV 14 1957
CHECKED		PASSED	
DRAWN		APPROVED	
CHECKED			

END POST DETAILS

REVISIONS	
NAME	DATE

ILLINOIS DEPARTMENT OF TRANSPORTATION
EXISTING PLANS
F.A.I. 80 (I-80)
F.A.U. 5974 (ASHLEY ROAD) OVER I-80
SECTION 32-3HBR-1
GRUNDY COUNTY
STATION 110+00.00 STRUCTURE NO. 032-0113
DESIGNED BY: JML
DRAWN BY: DJM
DATE: 09/09/05
CHECKED BY: MSW