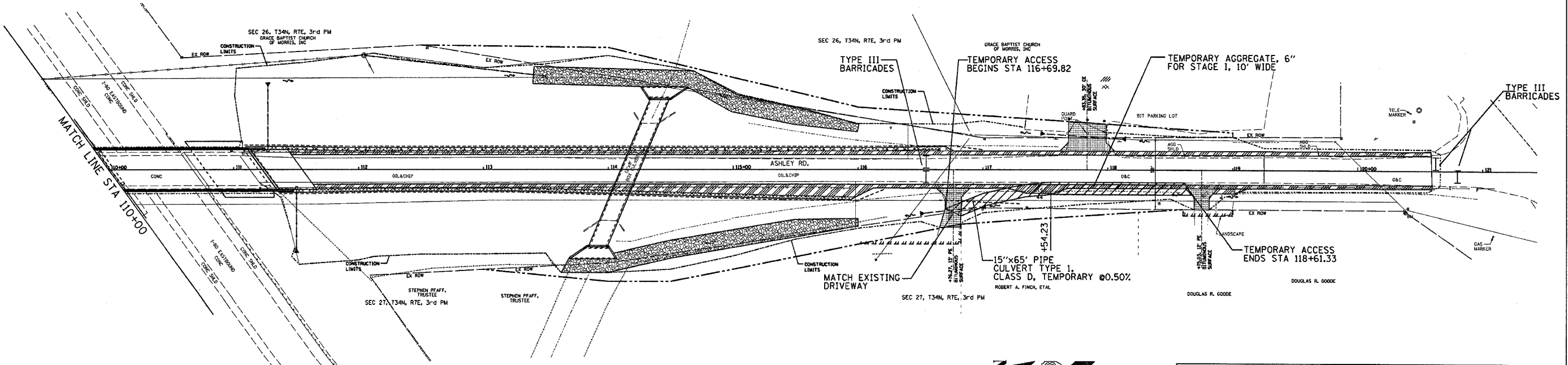
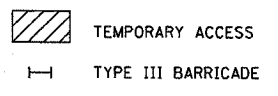
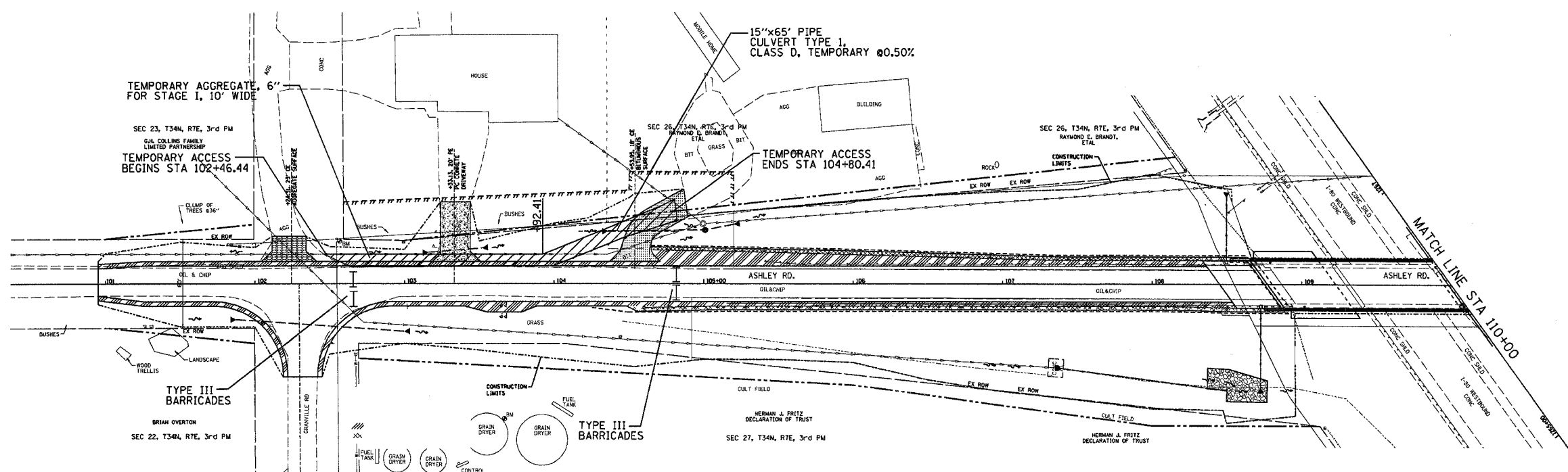
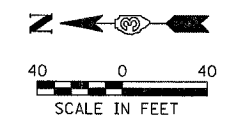


6/10/07

F.A.I. RTE.	SECTION	COUNTY	TOTAL SHEETS	SHEET NO.
80	32-3HBR-1	GRUNDY	88	13
STA.		TO STA.		
FED. ROAD DIST. NO.		ILLINOIS FED. AID PROJECT		



NOTE:  
 MAINTAIN TEMPORARY ACCESS TO EXISTING PRIVATE RESIDENCE AT ALL TIMES OR COORDINATE ALTERNATE ACCESS WITH THE RESPECTIVE OWNERS.



REVISIONS	
NAME	DATE

ILLINOIS DEPARTMENT OF TRANSPORTATION  
 TEMPORARY ACCESS PLAN  
 F.A.I. 80 (I-80)  
 SECTION 32-3HBR-1  
 GRUNDY COUNTY  
 DRAWN BY: JJO  
 CHECKED BY: MSW  
 DATE: 09/09/05