

STATE OF ILLINOIS
DEPARTMENT OF TRANSPORTATION

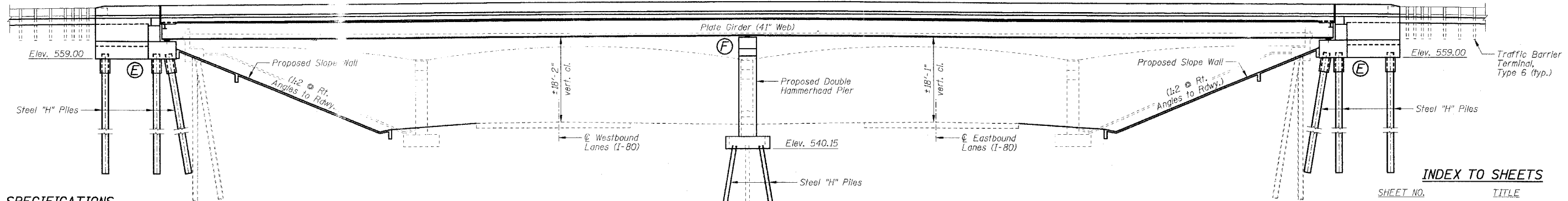
F.A.I. RTE.	SECTION	COUNTY	TOTAL SHEETS	SHEET NO.
80	32-3HBR-1	GRUNDY	88	28
STA.		TO STA.		
FED. ROAD DIST. NO.	ILLINOIS	FED. AID PROJECT		

Benchmarks: 1.) Existing railroad spike in power pole @ S.E. corner of Granville Rd. & Ashley Rd. Station 102+56.46/28.81' LT., Elevation = 551.64
2.) Existing railroad spike in power pole @ N.W. corner of Rte. 6 & Ashley Rd. Station 120+38.15/33.68' RT., Elevation = 549.25.

Existing Structure: SN 032-0057 built in 1957 as Section 32-3HBR-1. Structure consists of continuous four span haunched reinforced concrete T-beam superstructure on pile bent spill thru abutments and double hammerhead piers. 235'-6" back-to-back abutments, 29'-8" out-to-out deck. Structure to be removed and replaced. Road to be closed and traffic detoured during construction.

No Salvage.

SHEET NO. B1
OF 35 SHEETS



DESIGN SPECIFICATIONS

AASHTO 2002

LOADING HS20-44

Allow 50#/sq. ft. for future wearing surface.

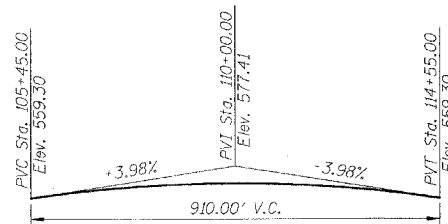
DESIGN STRESSES

FIELD UNITS

$f'_c = 3,500$ psi (Cast-In-Place)
 $f_y = 60,000$ psi (Reinforcement)
 $f_y = 36,000$ psi (Structural Steel - M270 Grade 36)
 $f_y = 50,000$ psi (Structural Steel - M270 Grade 50)

SEISMIC DATA

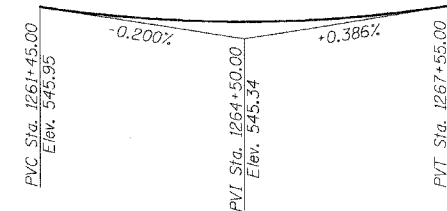
Seismic Performance Category (SPC) = A
Bedrock Acceleration Coefficient (A) = 0.04
Site Coefficient (S) = 1.2



PROFILE GRADE

F.A.U. 5974 (Ashley Rd.) (Along ϕ Roadway)

ELEVATION
(Dimensions & Elevations @ Right Angles to I-80 Roadway)

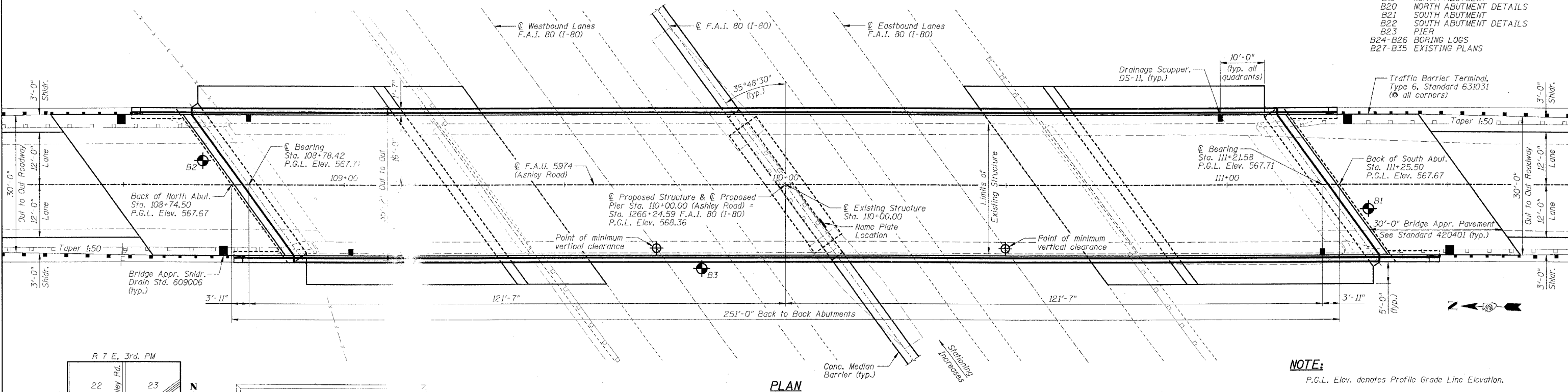


PROFILE GRADE

I-80 (Along ϕ Roadway)

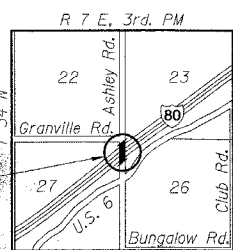
INDEX TO SHEETS

SHEET NO.	TITLE
B1	GENERAL PLAN AND ELEVATION
B2	GENERAL NOTES, BILL OF MATERIAL AND SUBSTRUCTURE LAYOUT PLAN
B3	MISCELLANEOUS DETAILS
B4	BAR SPLICER ASSEMBLY DETAILS
B5	ELEVATION LOCATIONS AND DEAD LOAD DEFLECTION DIAGRAM
B6-B7	TOP OF SLAB ELEVATIONS
B8-B9	SUPERSTRUCTURE DECK
B10	SUPERSTRUCTURE CROSS SECTION
B11	SUPERSTRUCTURE DETAILS, PARAPET DETAILS AND BILL OF MATERIAL
B12	NEOPRENE EXPANSION JOINTS
B13	DRAINAGE SCUPPER, DS-II
B14	STRUCTURAL STEEL FRAMING PLAN
B15-B16	STRUCTURAL STEEL DETAILS
B17	BEARING DETAILS
B18	ANCHOR BOLT DETAILS
B19	NORTH ABUTMENT
B20	NORTH ABUTMENT DETAILS
B21	SOUTH ABUTMENT
B22	SOUTH ABUTMENT DETAILS
B23	PIER
B24-B26	BORING LOGS
B27-B35	EXISTING PLANS

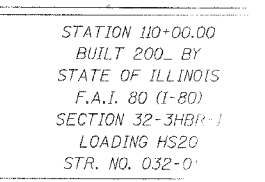


PLAN

NOTE:
P.G.L. Elev. denotes Profile Grade Line Elevation.



LOCATION SKETCH

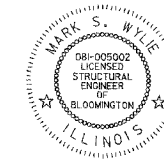


NAME PLATE DETAIL

See Standard 515

APPROVED
FOR STRUCTURAL ADEQUACY ONLY

Ralph E. Anderson
ENGINEER OF BRIDGES AND STRUCTURES



Mark S. Wylie Date 9/1/05
MARK S. WYLIE
ILLINOIS STRUCTURAL ENGINEER
NO. 081-005002
Exp. Date 11/30/06

REVISIONS	NAME	DATE

ILLINOIS DEPARTMENT OF TRANSPORTATION
GENERAL PLAN AND ELEVATION
F.A.I. 80 (I-80)
F.A.U. 5974 (ASHLEY ROAD) OVER I-80
SECTION 32-3HBR-1
GRUNDY COUNTY
STATION 110+00.00 STRUCTURE NO. 032-0113
DESIGNED BY: JML
DRAWN BY: DJM
DATE: 09/09/05
CHECKED BY: MSW