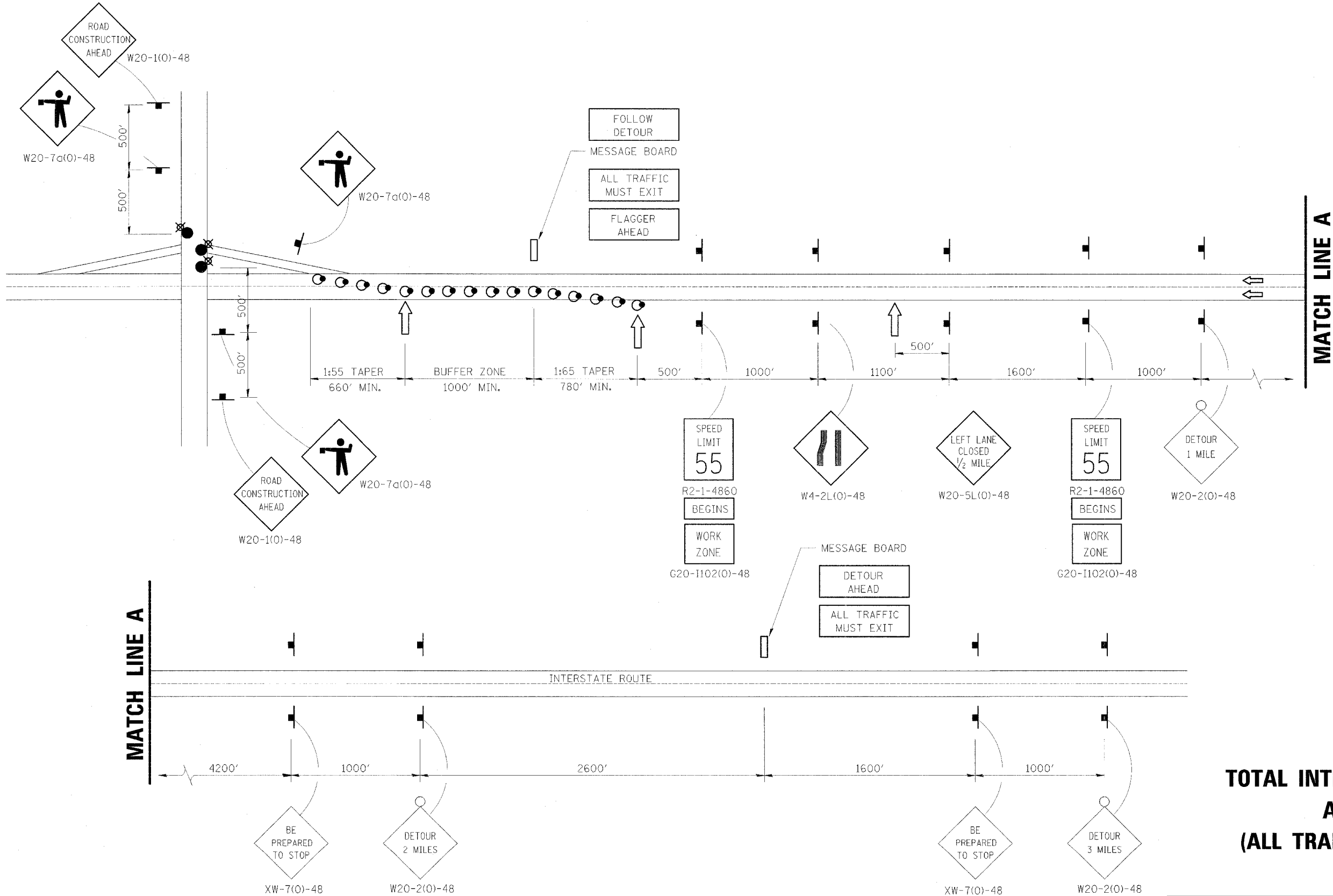


F.A.I. RTE.	SECTION	COUNTY	TOTAL SHEETS	SHEET NO.
80	32-3HBR-1	GRUNDY	88	69
STA.		TO STA.		
FED. ROAD DIST. NO.	ILLINOIS	FED. AID PROJECT		



**TOTAL INTERSTATE CLOSURE
AT NIGHT
(ALL TRAFFIC MUST EXIT)**

- DRUMS WITH STEADY BURNING LIGHTS
50' IN TAPERS AND 100' IN TANGENT ON CENTERS
- LIGHTED FLAGGER STATIONS
- ← ARROWBOARD

REVISIONS	
NAME	DATE

ILLINOIS DEPARTMENT OF TRANSPORTATION
DISTRICT DETAILS
F.A.I. 80 (I-80)
SECTION 32-3HBR-1
GRUNDY COUNTY
DRAWN BY: JJO
CHECKED BY: MSW
DATE: 09/09/05