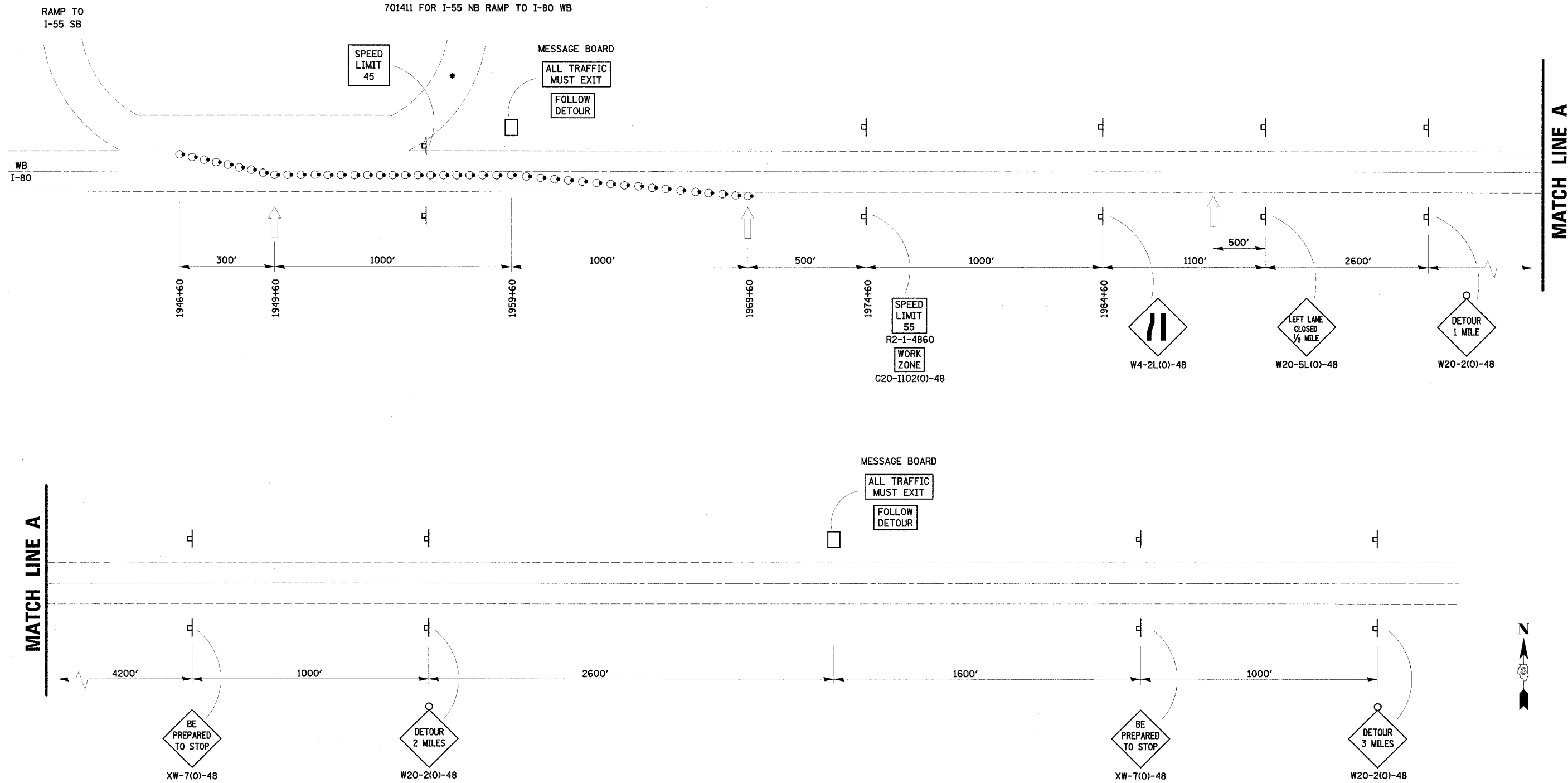


F.A.I. RTE.	SECTION	COUNTY	TOTAL SHEETS	SHEET NO.
80	32-3HBR-1	GRUNDY	88	70
STA.		TO STA.		
FED. ROAD DIST. NO.		ILLINOIS FED. AID PROJECT		

* INSTALL HIGHWAY STANDARD
701411 FOR I-55 NB RAMP TO I-80 WB



MATCH LINE A

MATCH LINE A

● DRUMS WITH STEADY BURNING LIGHTS
50' IN TAPERS AND 100' IN TANGENT ON CENTERS

← ARROWBOARD

**TOTAL INTERSTATE CLOSURE
AT NIGHT
(ALL TRAFFIC MUST EXIT)**

REVISIONS	
NAME	DATE

ILLINOIS DEPARTMENT OF TRANSPORTATION

F.A.I. 80 (I-80)
SECTION 32-3HBR-1
GRUNDY COUNTY

DATE: 09/09/05

DRAWN BY: JJO
CHECKED BY: MSW