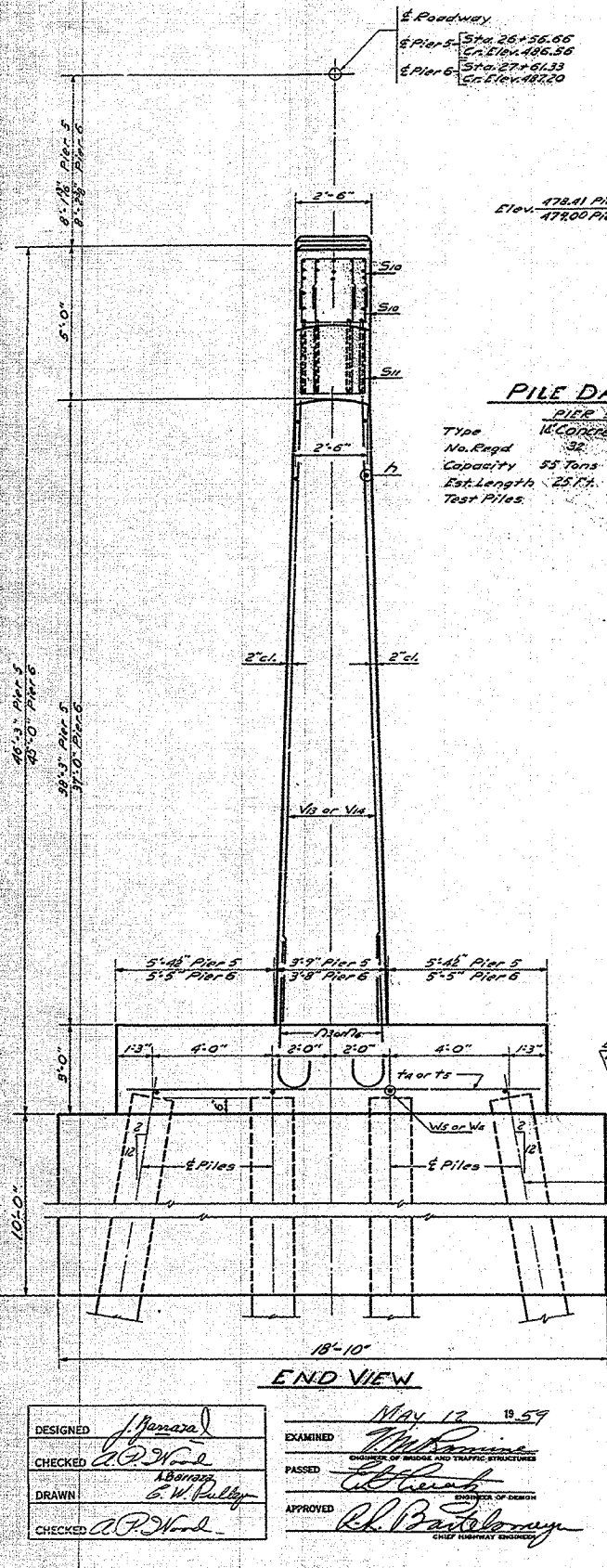


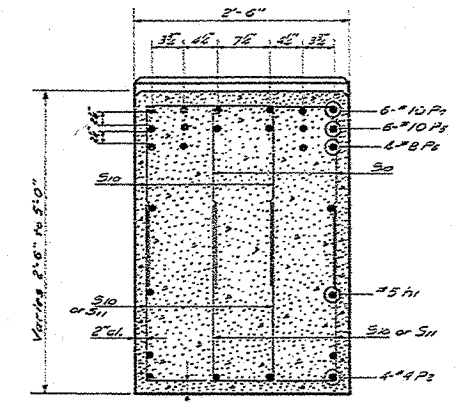
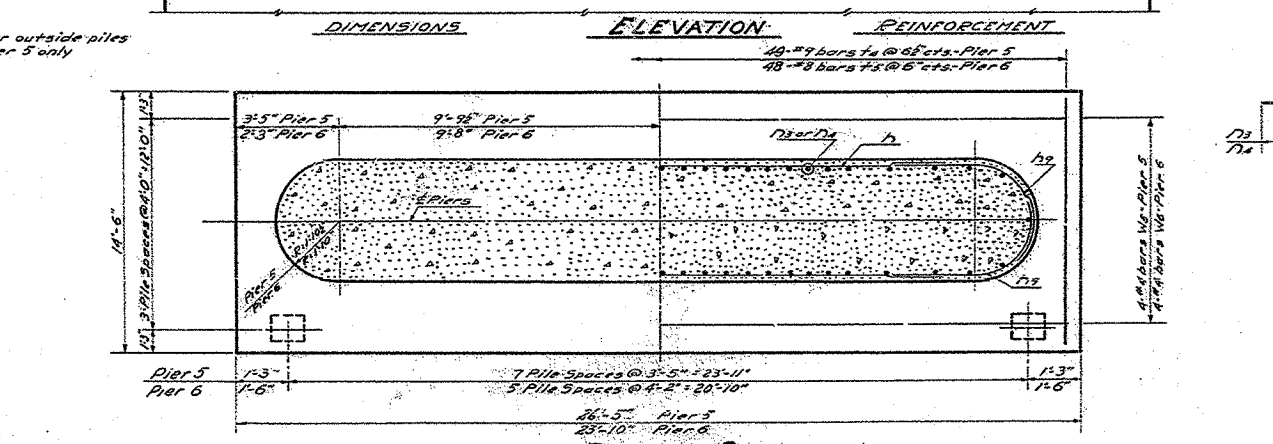
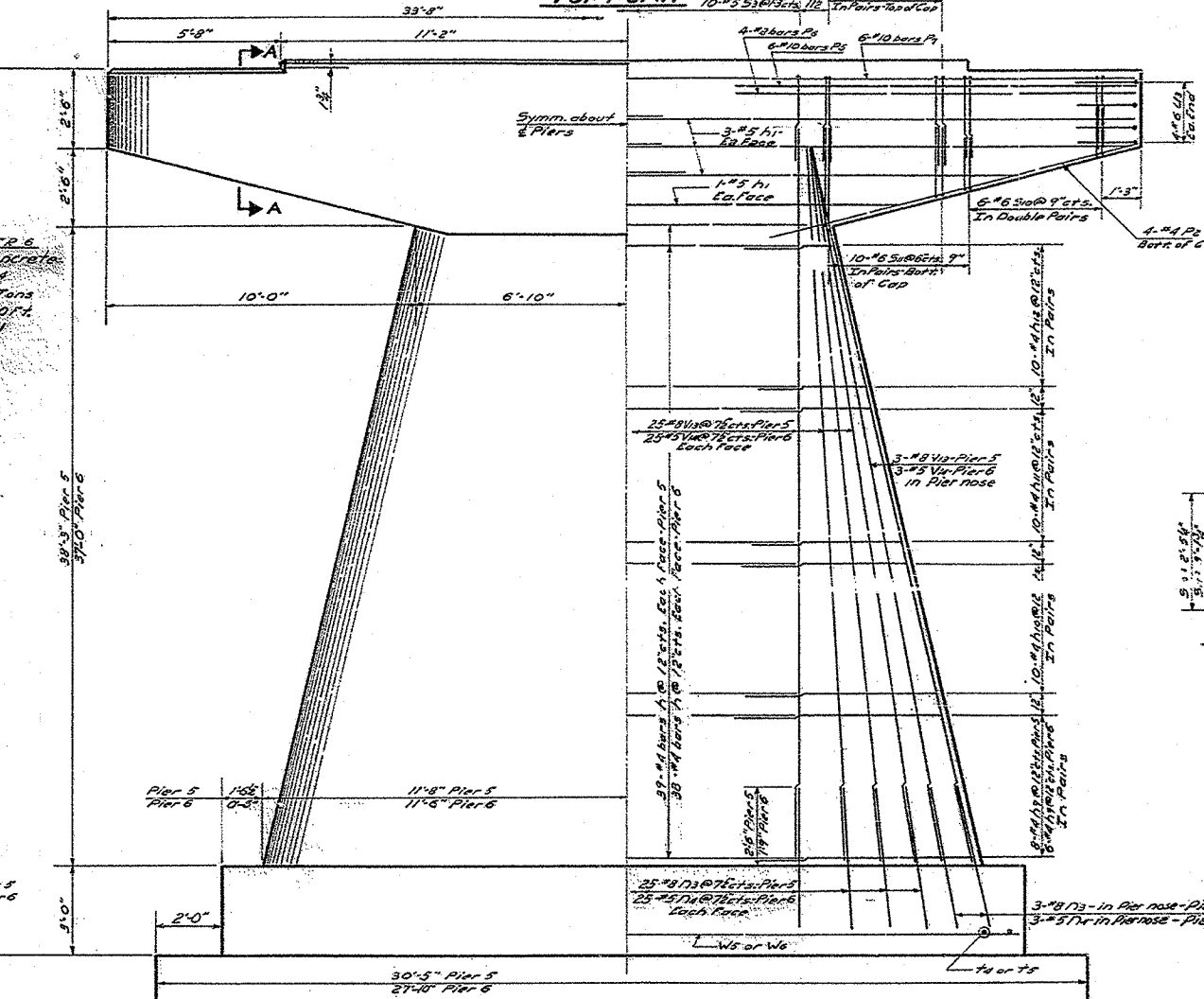
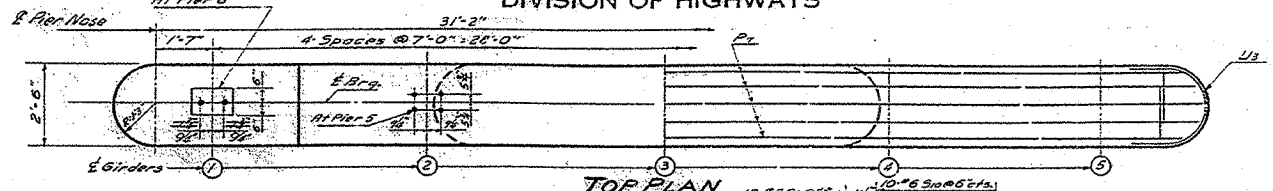
F.A.P. RTE.	SECTION	COUNTY	TOTAL SHEETS	SHEET NO.
627	1BR	LASALLE	1A	54
STA.		TO STA.		
FED. ROAD DIST. NO.		ILLINOIS FED. AID PROJECT		

STATE OF ILLINOIS
DEPARTMENT OF PUBLIC WORKS & BUILDINGS
DIVISION OF HIGHWAYS

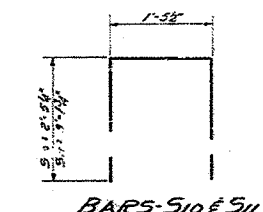


PILE DATA

	PIER 5	PIER 6
Type	18" Concrete	18" Concrete
No. Piled	32	24
Capacity	55 Tons	55 Tons
Est. Length	25 ft.	30 ft.
Test Piles		1



SECTION A-A

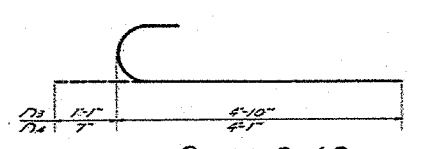


BARS-S10 & S11

TABLE OF DIMENSIONS

BAR	P	A	B
h1	1'-8 1/2"	5'-3"	3'-3"
h10	1'-6 1/2"	4'-3"	3'-0"
h11	1'-4 1/2"	3'-2"	2'-9"
h12	1'-2 1/2"	2'-1"	2'-6"

BARS-h1-h10-h11-h12



BARS-N3 & N4

BILL OF MATERIAL-2 PIERS

BAR	NO.	SIZE	LENGTH	SHAPES
h1	152	#6	17'-2"	—
h11	14	#5	15'-0"	—
h10	50	#4	8'-6"	—
h10	80	#4	7'-3"	—
h10	80	#4	5'-11"	—
h12	80	#4	5'-7"	—
N3	56	#8	5'-11"	C
N4	56	#5	4'-3"	C
P2	16	#4	12'-0"	—
P5	24	#10	13'-6"	—
P6	16	#8	13'-6"	—
P7	12	#10	31'-3"	—
S3	20	#5	6'-10"	□
S10	176	#8	6'-6"	□
S11	80	#6	7'-9"	□
T1	48	#4	14'-0"	—
T6	48	#8	14'-0"	—
U3	16	#6	7'-3"	C
V1	56	#8	10'-0"	—
V11	56	#5	10'-6"	—
W5	4	#4	25'-0"	—
W6	4	#6	22'-6"	—

Class X Concrete = Cu.Yds. 264.3
 Seal Coat Concrete Cu.Yds. 400
 Reinforcement Bars Lbs. 23070
 18" Concrete Piles Lin.Ft. 6490
 Test Piles - 18" Concrete Ea. 1

* Pier 5 - Class X Conc. = 125.6 Cu.Yds.

Note:
For detail of bars S1 & U3
See Sheet No. 12

PIERS 5 & 6
F.A.R.T. 8-SEC. 1B-R
LA SALLE COUNTY
STATION 25+60

DESIGNED: J. Menard
 CHECKED: A.P. Wood
 DRAWN: G.W. Kelly
 CHECKED: A.P. Wood

EXAMINED: M. R. ...
 PASSED: ...
 APPROVED: R. B. ...

MAY 12 1959

PLOT DATE = 9/12/2005
 FILE NAME = #FILEL4
 PLOT SCALE = #SCALE#
 USER NAME = #USER#

EXISTING STRUCTURE