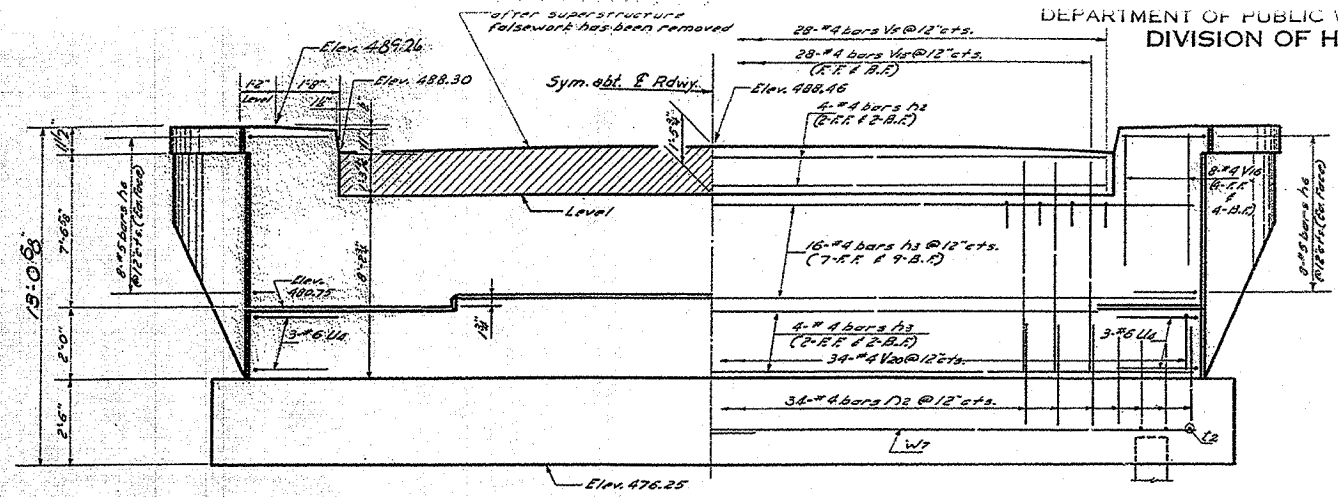
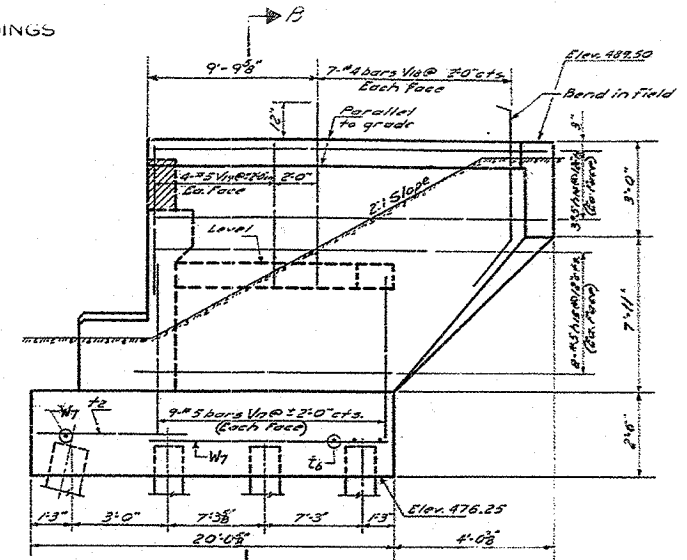


F.A.P. RTE.	SECTION	COUNTY	TOTAL SHEETS	SHEET NO.
627	IBR	LASALLE	69	58
STA.		TO STA.		
FED. ROAD DIST. NO.		ILLINOIS FED. AID PROJECT		

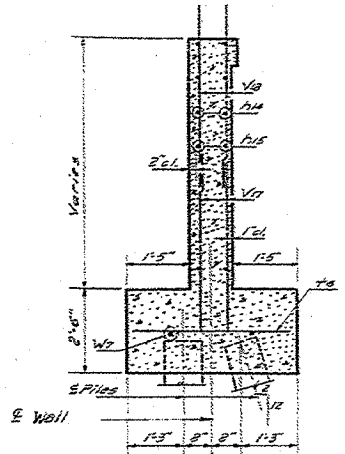
STATE OF ILLINOIS  
DEPARTMENT OF PUBLIC WORKS & BUILDINGS  
DIVISION OF HIGHWAYS



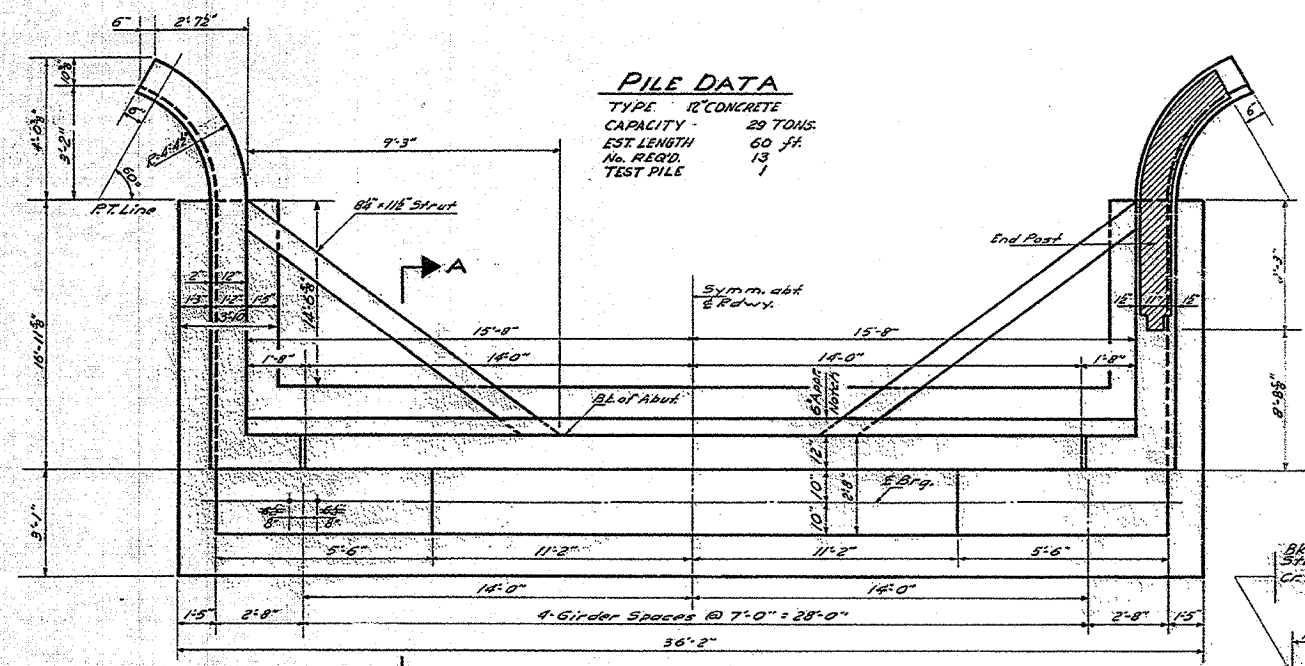
**ELEVATION**  
At R.H.S. to E. Roadway



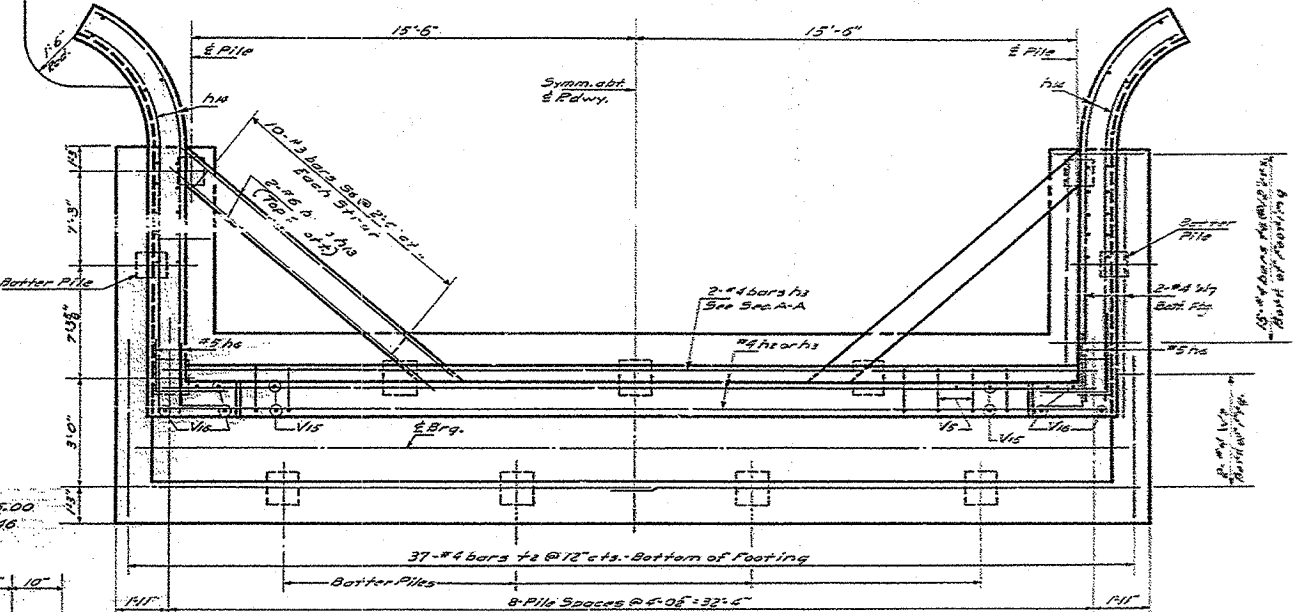
**SIDE ELEVATION**



**SECTION B-B**

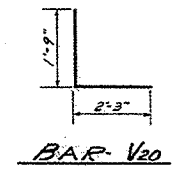
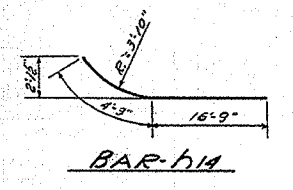


**PLAN OF ABUTMENT**  
Dimensions



**PLAN OF ABUTMENT**  
Reinforcement & Pile Spacing

**PILE DATA**  
TYPE 12" CONCRETE  
CAPACITY 29 TONS  
EST. LENGTH 60 ft.  
No. REQD. 13  
TEST PILE 1

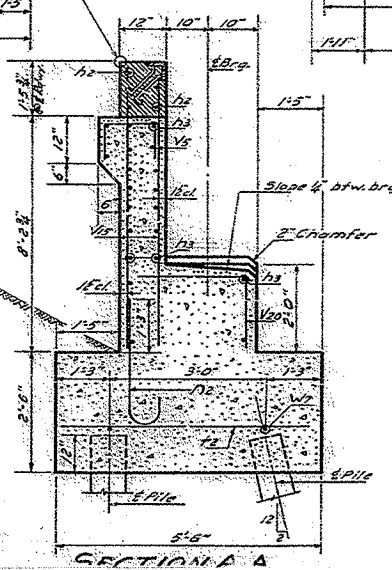


**BILL OF REINFORCEMENT**

BAR NO.	SIZE	LENGTH	SHAPE	BAR NO.	SIZE	LENGTH	SHAPE
H2	#4	27'-9"	—	V6	#4	3'-6"	—
H3	#4	33'-0"	—	V7	#4	10'-3"	—
H6	#5	4'-0"	L	V8	#4	2'-9"	□
H9	#6	15'-6"	—	V9	#4	4'-3"	—
H14	#5	21'-2"	—	V10	#4	8'-5"	—
H15	#5	17'-9"	—	V11	#4	5'-2"	—
V2	#4	3'-0"	—	V12	#4	5'-9"	—
V4	#3	3'-0"	□	V20	#4	4'-0"	—
V5	#4	5'-2"	—	W1	#4	15'-6"	—

**BILL OF MATERIAL**

ITEM	UNIT	QUANT.
Class X Concrete	Cu Yds	540
Reinforcement Bars	Lbs.	3,300
12" Concrete Piling	Lin. Ft.	700
Test Piles (12" conc)	Sq	1



**SECTION A-A**

DESIGNED	J. Ferrara
CHECKED	Abraham P. Wood
DRAWN	E. W. Rulley
CHECKED	a.p.w.

EXAMINED  
MAY 12 19 59  
PASSED  
APPROVED  
R. B. Tolson

Note:  
For detail of bars  
H6, H9, V6, V4, & V5 See  
Sheet No. 15

**EAST ABUTMENT**  
F.A.P.T. 8-SECTION IB-R  
LASALLE COUNTY  
STATION 25+60

EXISTING STRUCTURE