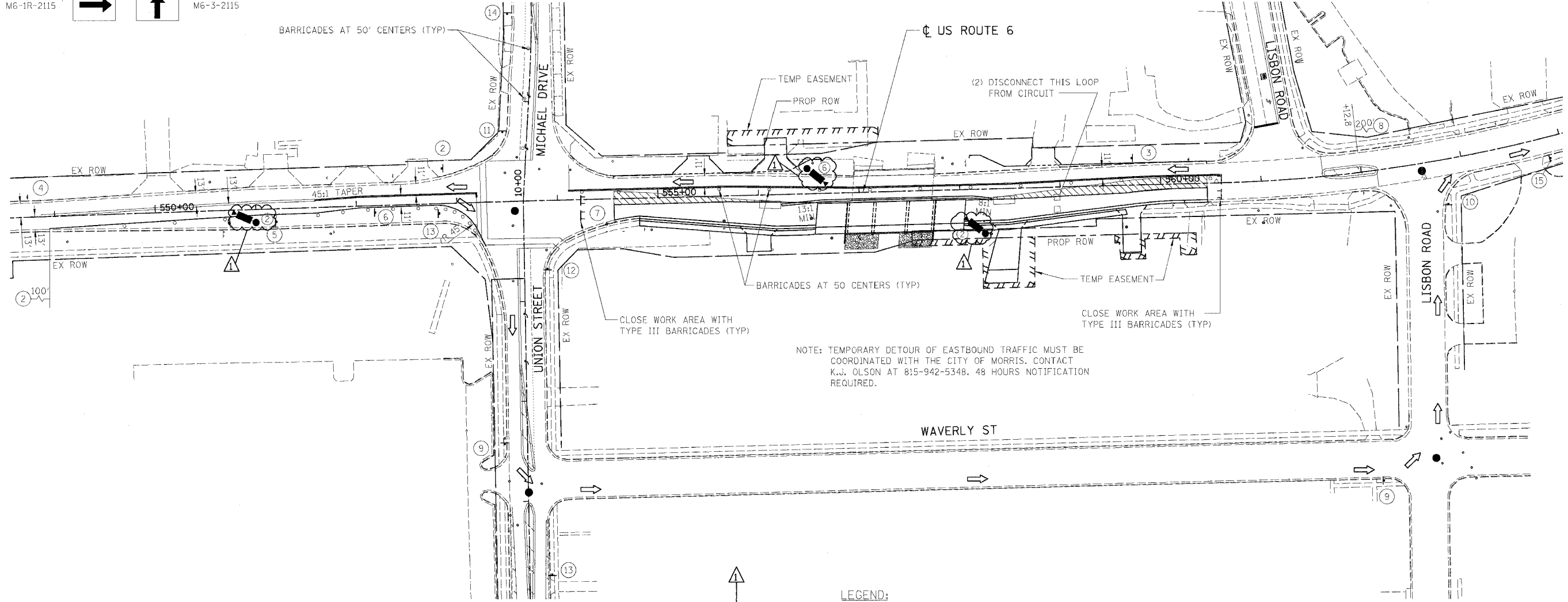
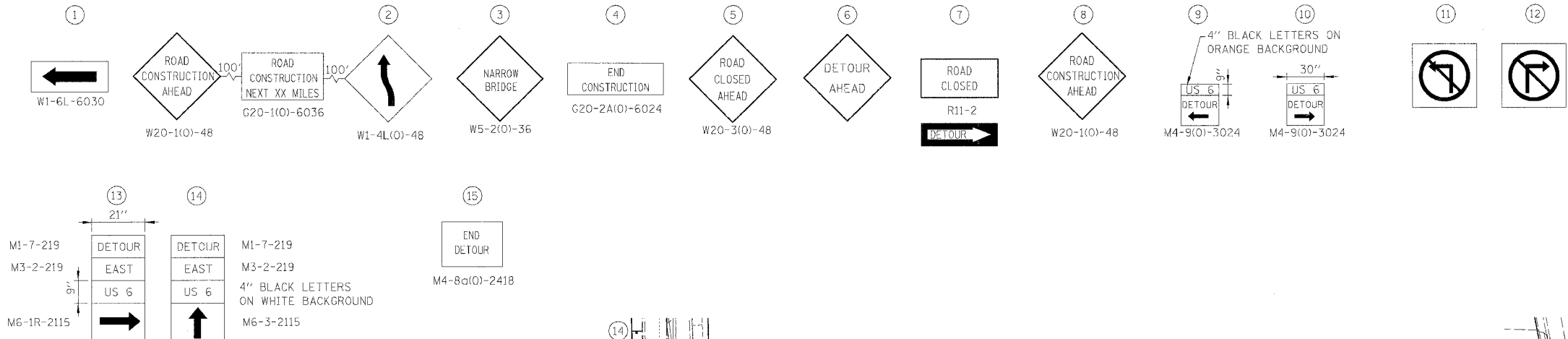
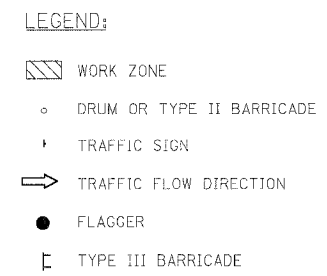
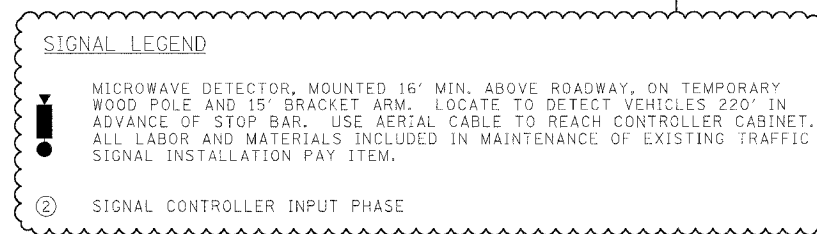


F.A.U. RTE.	SECTION	COUNTY	TOTAL SHEETS	SHEET NO.
5952	G-BR-1	GRUNDY	50	16
STA.	TO STA.			
FED. ROAD DIST. NO. 7	ILLINOIS	FED. AID PROJECT		



TRAFFIC SIGNAL WORK

- WITH ONE WORKING DAY OR LESS, PUT BOTH SIGNALS ON FLASH, AND USE FLAGMEN FOR TRAFFIC CONTROL.
- DISABLE THE EASTBOUND INSIDE LOOP DETECTOR FOR EASTBOUND TRAFFIC AT LISBON ROAD.



BOWMAN, BARRETT & ASSOCIATES INC.
 CONSULTING ENGINEERS
 130 E. RANDOLPH STREET
 CHICAGO, ILLINOIS 60601
 JOB NO. 541



REVISIONS	
NAME	DATE
ADDENDUM 1	2-27-06

ILLINOIS DEPARTMENT OF TRANSPORTATION

U.S. ROUTE 6
 MAINTENANCE OF TRAFFIC
 STAGE 1B

SCALE: VERT. NTS
 HORIZ. 1" = 50'
 DATE 11/04/05

DRAWN BY JAM
 CHECKED BY DDM

2/17/2006 2:24:34 PM
 n:\54\cadd\civil\66563 East Fork\11mthb.dwg
 default