

SUMMARY OF QUANTITIES

URBAN  
80% FEDERAL  
20% STATE  
0% CITY

ROADWAY X020-2A EAST FORK  
NETTLE CR.  
PR. 032-0108  
EX. 032-0081

F.A.U. RTE.	SECTION	COUNTY	TOTAL SHEETS	SHEET NO.
5952	C-BR-1	GRUNDY	50	6
STA.		TO STA.		
FED. ROAD DIST. NO. 7		ILLINOIS	FED. AID PROJECT	

CODE NO	ITEM	UNIT	TOTAL QUANTITY	X020-2A	X020-2A
70101700	TRAFFIC CONTROL AND PROTECTION	L SUM	1	1	
70102620	TRAFFIC CONTROL AND PROTECTION, STANDARD 701501	L SUM	1	1	
70300520	PAVEMENT MARKING TAPE, TYPE III 4"	FOOT	6887	6887	
70300570	PAVEMENT MARKING TAPE, TYPE III 24"	FOOT	39	39	
70400100	TEMPORARY CONCRETE BARRIER	FOOT	130	130	
70400200	RELOCATE TEMPORARY CONCRETE BARRIER	FOOT	130	130	
* 70500690	TEMPORARY TRAFFIC BARRIER TERMINAL, TYPE 11	EACH	4	4	
* 78000100	THERMOPLASTIC PAVEMENT MARKING - LETTERS AND SYMBOLS	SQ FT	110	110	
* 78000200	THERMOPLASTIC PAVEMENT MARKING - LINE 4"	FOOT	3378	3378	
* 78000400	THERMOPLASTIC PAVEMENT MARKING - LINE 6"	FOOT	447	447	
* 78000500	THERMOPLASTIC PAVEMENT MARKING - LINE 8"	FOOT	569	569	
* 78000600	THERMOPLASTIC PAVEMENT MARKING - LINE 12"	FOOT	364	364	
* 78000650	THERMOPLASTIC PAVEMENT MARKING - LINE 24"	FOOT	189	189	
* 78005100	EPOXY PAVEMENT MARKING - LETTERS AND SYMBOLS	SQ FT	16	16	
* 78005110	EPOXY PAVEMENT MARKING - LINE 4"	FOOT	814	814	
* 78005140	EPOXY PAVEMENT MARKING - LINE 8"	FOOT	83	83	
* 78005150	EPOXY PAVEMENT MARKING - LINE 12"	FOOT	222	222	
* 78100100	RAISED REFLECTIVE PAVEMENT MARKER	EACH	35	35	
* 78100105	RAISED REFLECTIVE PAVEMENT MARKER (BRIDGE)	EACH	10	10	
78300100	PAVEMENT MARKING REMOVAL	SQ FT	982	982	
81012200	CONDUIT IN TRENCH, 3/4" DIA., PVC	FOOT	21	21	
81012600	CONDUIT IN TRENCH, 2" DIA., PVC	FOOT	183	183	
81400400	CONCRETE HANDHOLE	EACH	1	1	
81500200	TRENCH AND BACKFILL FOR ELECTRICAL WORK	FOOT	198	198	
84200600	REMOVAL OF EXISTING LIGHTING UNIT, NO SALVAGE	EACH	1	1	
84200700	LIGHTING FOUNDATION REMOVAL	EACH	1	1	
<del>85000200</del>	<del>MAINTENANCE OF EXISTING TRAFFIC SIGNAL INSTALLATION</del>	<del>EACH</del>	<del>2</del>	<del>2</del>	
* 87301305	ELECTRIC CABLE IN CONDUIT, LEAD-IN, NO. 14 1 PAIR	FOOT	195	195	
87900200	DRILL EXISTING HANDHOLE	EACH	3	3	
* 88600100	DETECTOR LOOP, TYPE 1	FOOT	116	116	
* 89502200	MODIFY EXISTING CONTROLLER	EACH	2	2	
X0325200	RELOCATE INTERCONNECT CABLE	FOOT	606	606	
550A0050	STORM SEWERS, CLASS A, TYPE 1 12"	FOOT	13	13	
550A0160	STORM SEWERS, CLASS A, TYPE 1 36"	FOOT	18	18	
550A0420	STORM SEWERS, CLASS A, TYPE 2 27"	FOOT	195	195	
550A2320	STORM SEWERS, RUBBER GASKET, CLASS A, TYPE 1 12"	FOOT	214	214	

\* SPECIALTY ITEMS  
**REVISED**  
 2-27-06  
 ADDENDUM 1

BOWMAN, BARRETT & ASSOCIATES INC.  
 CONSULTING ENGINEERS  
 130 E. RANDOLPH STREET  
 CHICAGO, ILLINOIS 60601  
 JOB NO. 541



REVISIONS	
NAME	DATE

ILLINOIS DEPARTMENT OF TRANSPORTATION

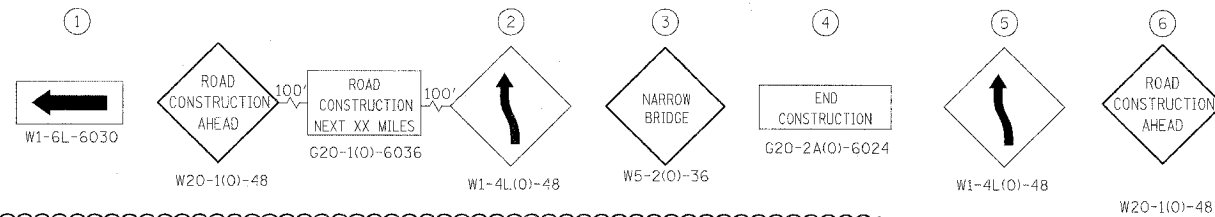
U.S. ROUTE 6  
 SUMMARY OF QUANTITIES

SCALE: VERT. NTS  
 HORIZ. NTS  
 DATE 10/25/05

DRAWN BY RGR  
 CHECKED BY DDM

1/27/2005 3:38:05 PM m:\541\road\civil\66563\East Fork\541cage01.fg

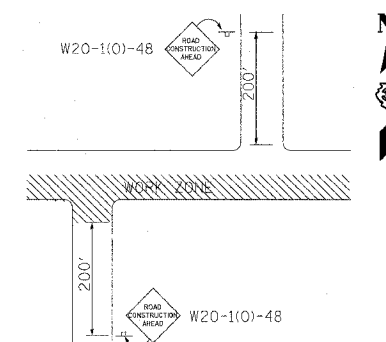
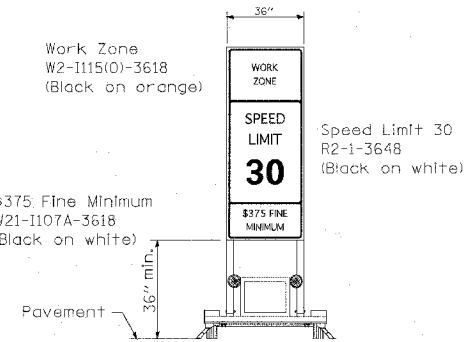
F.A.U. RTE. 1	SECTION	COUNTY	TOTAL SHEETS	SHEET NO.
5952	G-BR-1	GRUNDY	50	15
STA.		TO STA.		
FED. ROAD DIST. NO. 7		ILLINOIS FED. AID PROJECT		



**SIGNAL LEGEND**

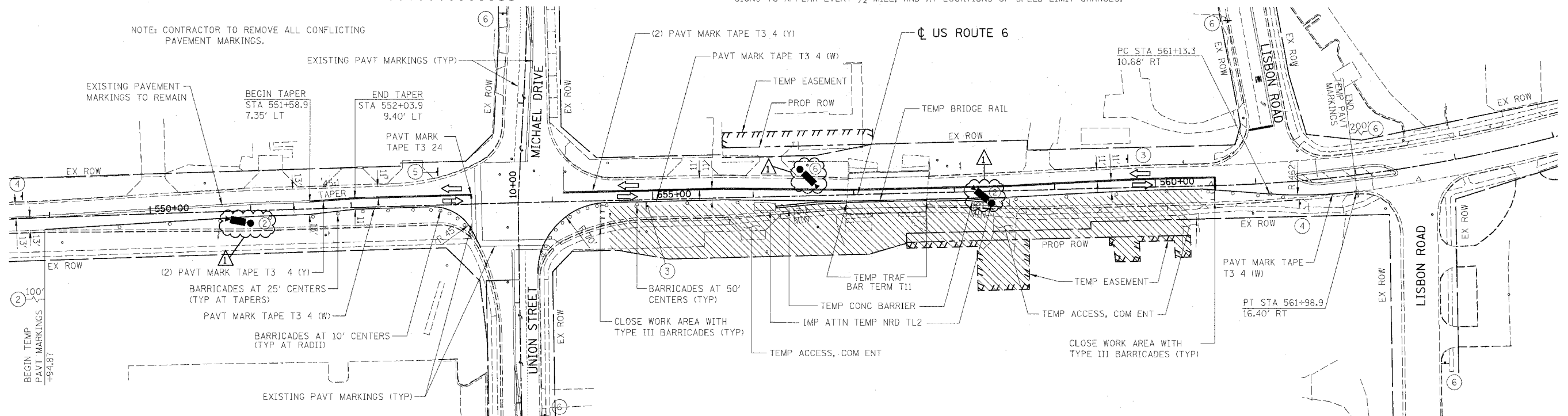
① MICROWAVE DETECTOR, MOUNTED 16' MIN. ABOVE ROADWAY, ON TEMPORARY WOOD POLE AND 15' BRACKET ARM. LOCATE TO DETECT VEHICLES 220' IN ADVANCE OF STOP BAR. USE AERIAL CABLE TO REACH CONTROLLER CABINET. ALL LABOR AND MATERIALS INCLUDED IN MAINTENANCE OF EXISTING TRAFFIC SIGNAL INSTALLATION PAY ITEM.

② SIGNAL CONTROLLER INPUT PHASE



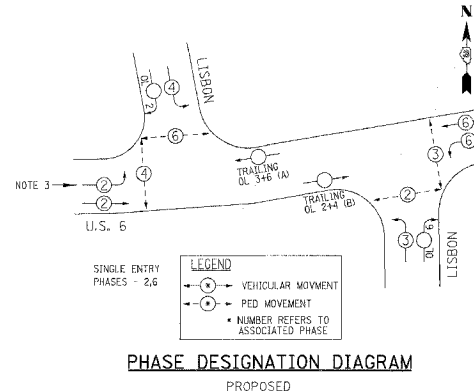
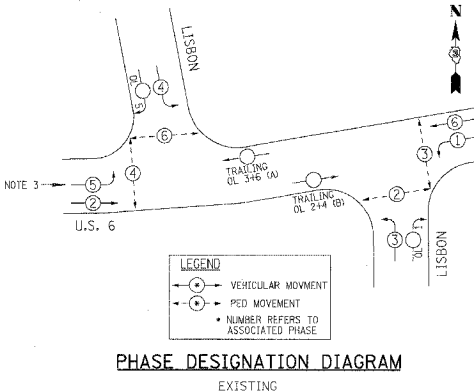
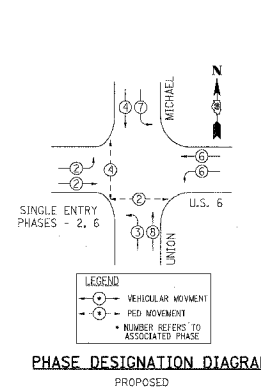
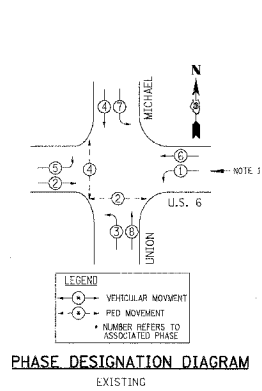
**CONSTRUCTION SPEED LIMIT SIGN**  
 ANY EXISTING CONTRADICTORY SPEED LIMIT SIGNS TO BE REMOVED. SIGNS TO APPEAR EVERY 1/2 MILE, AND AT LOCATIONS OF SPEED LIMIT CHANGES.

**SIDE ROAD ADVANCE SIGNING**



**TRAFFIC SIGNAL WORK**

- CHANGE SIGNAL SEQUENCE OF OPERATION FROM EXISTING TO PROPOSED; COMBINE PHASE 5 WITH PHASE 2 AT UNION/MICHAEL. DISABLE WESTBOUND LEFT TURN LANE DETECTOR.
- INSTALL THE TWO PROPOSED FAR LOOP DETECTORS FOR EASTBOUND TRAFFIC AT LISBON ROAD, INCLUDING HANDHOLE, CONDUIT AND CABLE; MAKE THESE LOOPS OPERATIONAL IN THE CONTROLLER (SEE SHEET 17).
- CHANGE SIGNAL SEQUENCE OF OPERATION FROM EXISTING TO PROPOSED; COMBINE PHASE 1 WITH PHASE 6 AT LISBON ROAD. MOVE THE EASTBOUND LEFT TURN LANE DETECTOR FROM THE EASTBOUND LEFT TURN PHASE (5) TO THE EASTBOUND THROUGH PHASE (2).



- LEGEND:**
- ▨ WORK ZONE
  - DRUM OR TYPE II BARRICADE
  - TRAFFIC SIGN
  - ➔ TRAFFIC FLOW DIRECTION
  - ▬ TYPE III BARRICADE

REVISIONS	
NAME	DATE
ADDENDUM 1	2-27-06

ILLINOIS DEPARTMENT OF TRANSPORTATION

U.S. ROUTE 6  
 MAINTENANCE OF TRAFFIC  
 STAGE 1A

SCALE: VERT. NTS  
 HORIZ. 1" = 50'

DATE 11/04/05

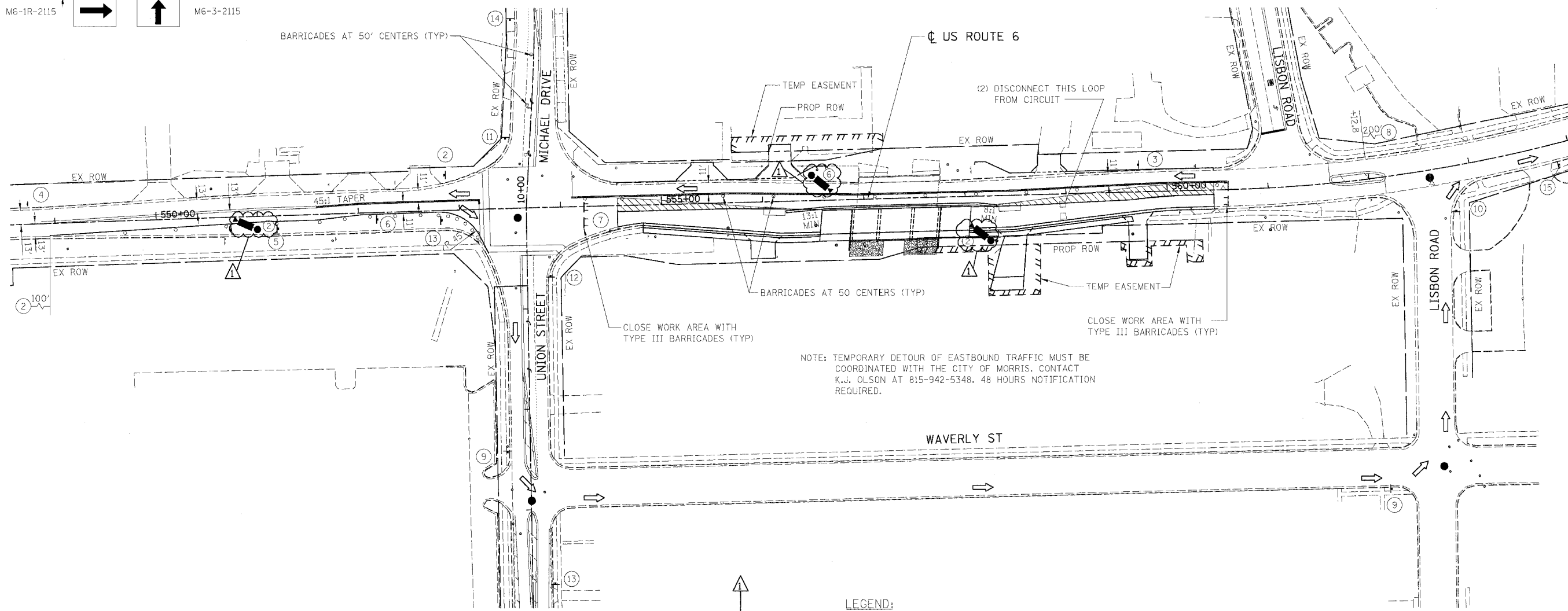
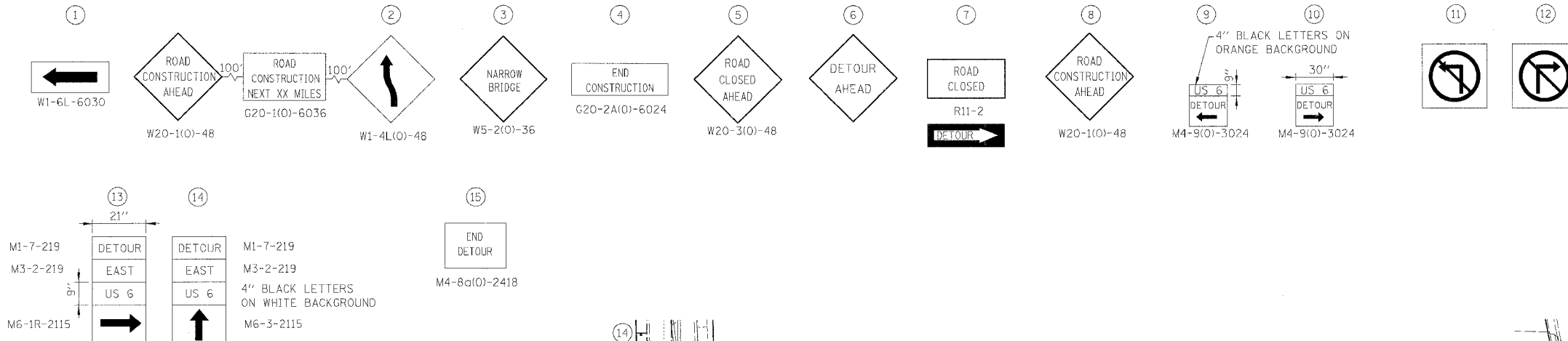
DRAWN BY JAM  
 CHECKED BY DDM

BOWMAN, BARRETT & ASSOCIATES INC.  
 CONSULTING ENGINEERS  
 130 E. RANDOLPH STREET  
 CHICAGO, ILLINOIS 60601  
 JOB NO. 541



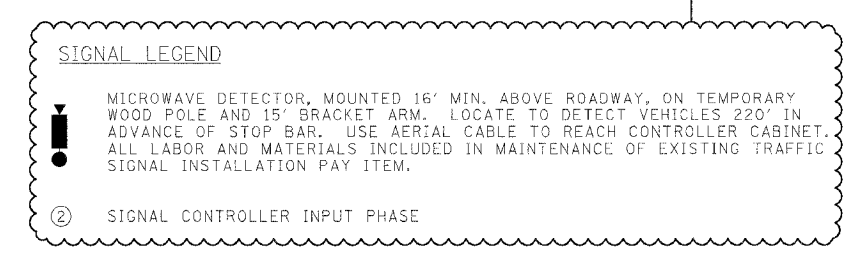
2/17/2006 3:04:28 PM  
 m:\541\road\civ\66563\Draw\ForK\66563.dwg

F.A.U. RTE.	SECTION	COUNTY	TOTAL SHEETS	SHEET NO.
5952	G-BR-1	GRUNDY	50	16
STA.	TO STA.			
FED. ROAD DIST. NO. 7	ILLINOIS	FED. AID PROJECT		



NOTE: TEMPORARY DETOUR OF EASTBOUND TRAFFIC MUST BE COORDINATED WITH THE CITY OF MORRIS. CONTACT K.J. OLSON AT 815-942-5348. 48 HOURS NOTIFICATION REQUIRED.

- TRAFFIC SIGNAL WORK**
- WITH ONE WORKING DAY OR LESS, PUT BOTH SIGNALS ON FLASH, AND USE FLAGMEN FOR TRAFFIC CONTROL.
  - DISABLE THE EASTBOUND INSIDE LOOP DETECTOR FOR EASTBOUND TRAFFIC AT LISBON ROAD.



- LEGEND:**
- WORK ZONE
  - DRUM OR TYPE II BARRICADE
  - TRAFFIC SIGN
  - TRAFFIC FLOW DIRECTION
  - FLAGGER
  - TYPE III BARRICADE

**BOWMAN, BARRETT & ASSOCIATES INC.**  
 CONSULTING ENGINEERS  
 130 E. RANDOLPH STREET  
 CHICAGO, ILLINOIS 60601  
 JOB NO. 541



REVISIONS	
NAME	DATE
ADDENDUM 1	2-27-06

ILLINOIS DEPARTMENT OF TRANSPORTATION

**U.S. ROUTE 6  
 MAINTENANCE OF TRAFFIC  
 STAGE 1B**

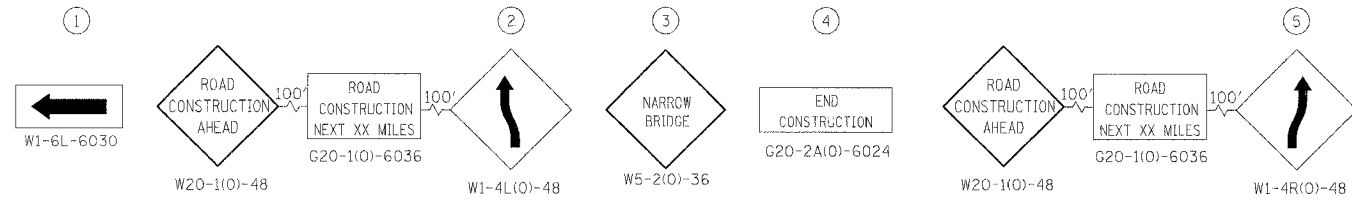
SCALE: VERT. NTS  
 HORIZ. 1" = 50'

DATE 11/04/05

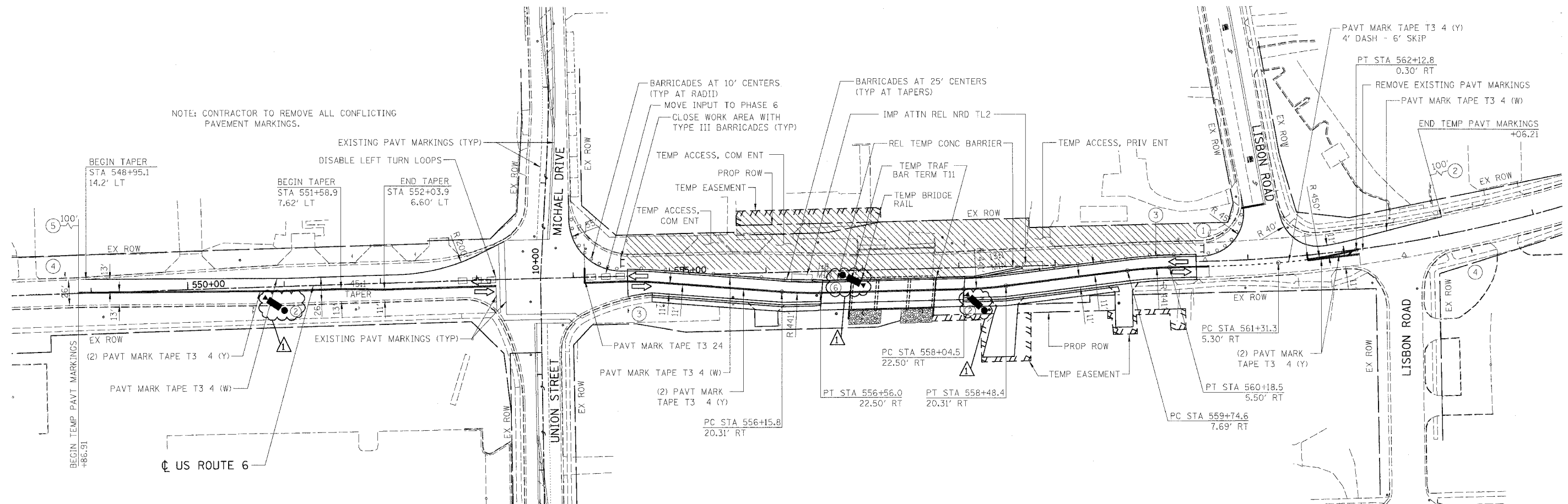
DRAWN BY JAM  
 CHECKED BY DDM

2/17/2006 2:24:34 PM  
 n:\54\cadd\civil\66563 East Fork\10\m1b.dwg  
 default

F.A.U. RTE.	SECTION	COUNTY	TOTAL SHEETS	SHEET NO.
5952	G-BR-1	GRUNDY	50	18
STA.		TO STA.		
FED. ROAD DIST. NO. 7		ILLINOIS FED. AID PROJECT		



NOTE: CONTRACTOR TO REMOVE ALL CONFLICTING PAVEMENT MARKINGS.



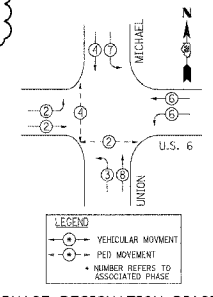
**SIGNAL LEGEND**

MICROWAVE DETECTOR, MOUNTED 16' MIN. ABOVE ROADWAY, ON TEMPORARY WOOD POLE AND 15' BRACKET ARM. LOCATE TO DETECT VEHICLES 220' IN ADVANCE OF STOP BAR. USE AERIAL CABLE TO REACH CONTROLLER CABINET. ALL LABOR AND MATERIALS INCLUDED IN MAINTENANCE OF EXISTING TRAFFIC SIGNAL INSTALLATION PAY ITEM.

SIGNAL CONTROLLER INPUT PHASE

**TRAFFIC SIGNAL WORK**

- INSTALL THE TWO PROPOSED FAR LOOP DETECTORS FOR WESTBOUND TRAFFIC AT UNION/MICHAEL, INCLUDING ALL CONDUIT AND CABLE; SPLICE LOOP DETECTOR WIRE INTO EXISTING LOOP LEAD-IN CABLE TO MAKE LOOPS OPERATIONAL IN CONTROLLER (SEE SHEET 19).
- MOVE THE WESTBOUND LEFT TURN LOOP DETECTOR INPUT (PHASE 1) TO THE WESTBOUND THROUGH PHASE (PHASE 6), AND DISABLE THE EASTBOUND LEFT TURN LANE LOOP DETECTOR AT UNION/MICHAEL.



**PHASE DESIGNATION DIAGRAM**  
EXISTING  
NOTE: MOVE DETECTOR INPUT FOR PHASE 1 TO PHASE 6.

- LEGEND:**
- WORK ZONE
  - DRUM OR TYPE II BARRICADE
  - TRAFFIC SIGN
  - TRAFFIC FLOW DIRECTION
  - TYPE III BARRICADE

REVISIONS	
NAME	DATE
ADDENDUM 1	2-27-06

ILLINOIS DEPARTMENT OF TRANSPORTATION

**U.S. ROUTE 6  
MAINTENANCE OF TRAFFIC  
STAGE 2A**

SCALE: VERT. NTS  
HORIZ. 1" = 50'  
DATE 11/04/05

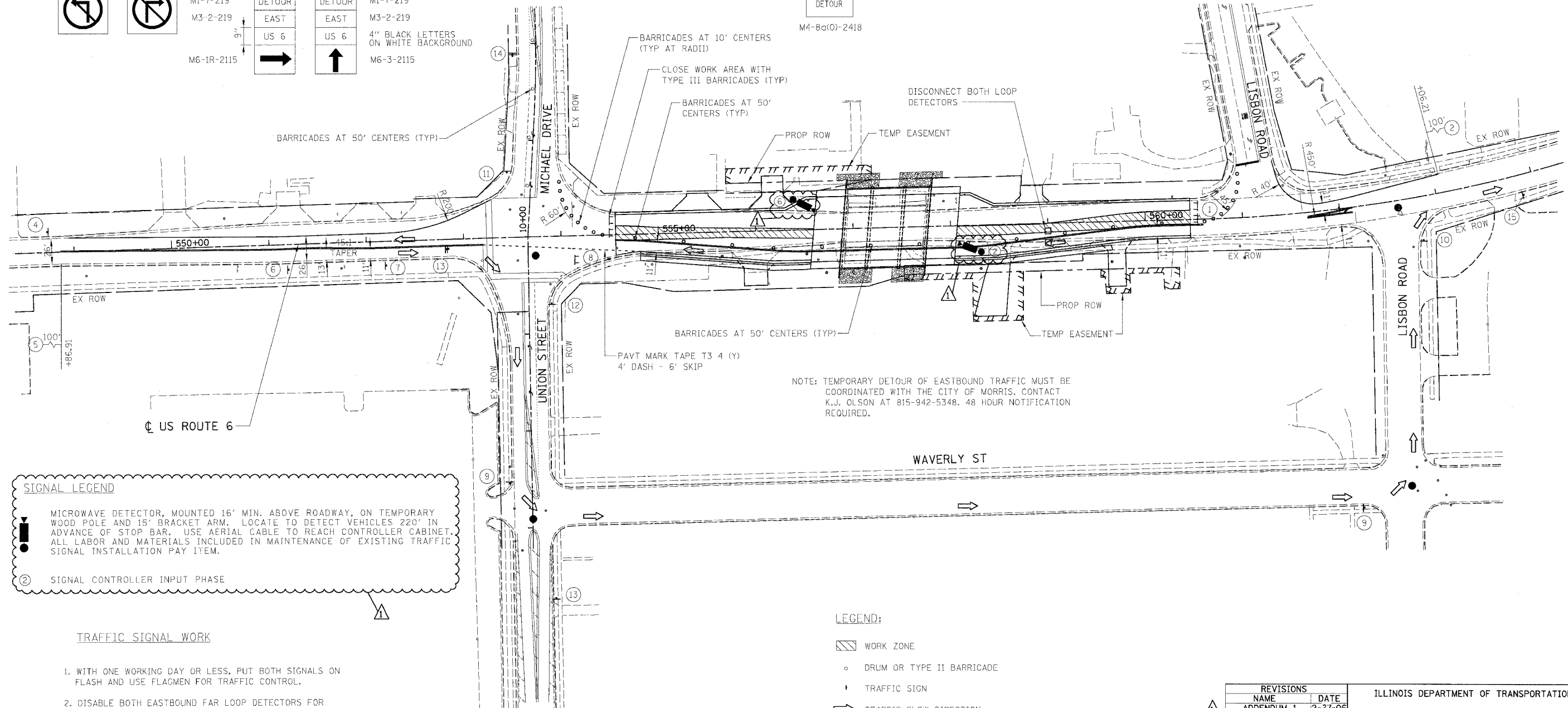
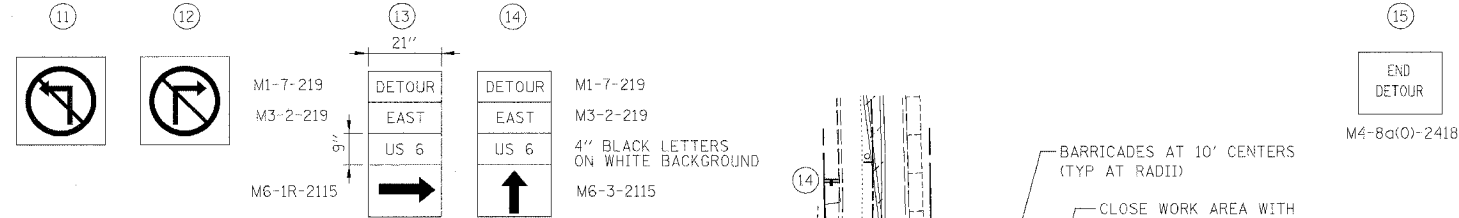
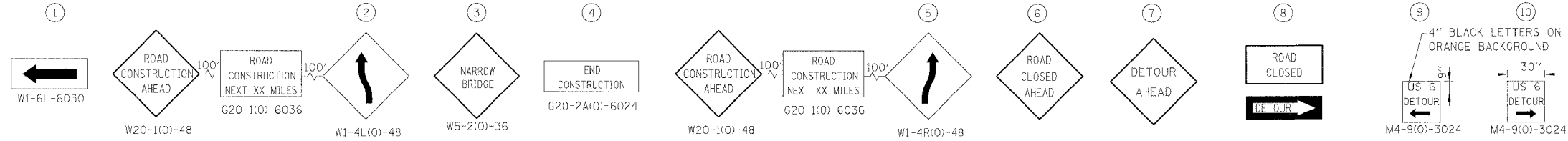
DRAWN BY JAM  
CHECKED BY DDM

**BOWMAN, BARRETT  
& ASSOCIATES INC.**  
CONSULTING ENGINEERS  
130 E. RANDOLPH STREET  
CHICAGO, ILLINOIS 60601  
JOB NO. 541



2/17/2006 2:24:19 PM  
m:\541\cadda\civil\66563\East Fork\541mo12a\_ef.dgn

F.A.U. RTE.	SECTION	COUNTY	TOTAL SHEETS	SHEET NO.
5952	G-BR-1	GRUNDY	50	20
STA.	TO STA.			
FED. ROAD DIST. NO. 7	ILLINOIS FED. AID PROJECT			



**SIGNAL LEGEND**

MICROWAVE DETECTOR, MOUNTED 16' MIN. ABOVE ROADWAY, ON TEMPORARY WOOD POLE AND 15' BRACKET ARM. LOCATE TO DETECT VEHICLES 220' IN ADVANCE OF STOP BAR. USE AERIAL CABLE TO REACH CONTROLLER CABINET. ALL LABOR AND MATERIALS INCLUDED IN MAINTENANCE OF EXISTING TRAFFIC SIGNAL INSTALLATION PAY ITEM.

② SIGNAL CONTROLLER INPUT PHASE

- TRAFFIC SIGNAL WORK**
1. WITH ONE WORKING DAY OR LESS, PUT BOTH SIGNALS ON FLASH AND USE FLAGMEN FOR TRAFFIC CONTROL.
  2. DISABLE BOTH EASTBOUND FAR LOOP DETECTORS FOR EASTBOUND TRAFFIC AT LISBON ROAD.

- LEGEND:**
- ▨ WORK ZONE
  - DRUM OR TYPE II BARRICADE
  - ↑ TRAFFIC SIGN
  - ➔ TRAFFIC FLOW DIRECTION
  - FLAGGER
  - ⌊ TYPE III BARRICADE

**BOWMAN, BARRETT & ASSOCIATES INC.**  
 CONSULTING ENGINEERS  
 130 E. RANDOLPH STREET  
 CHICAGO, ILLINOIS 60601  
 JOB NO. 541



REVISIONS	
NAME	DATE
ADDENDUM 1	2-27-06

ILLINOIS DEPARTMENT OF TRANSPORTATION

U.S. ROUTE 6  
 MAINTENANCE OF TRAFFIC  
 STAGE 2B

SCALE: VERT. NTS  
 HORIZ. 1" = 50'

DATE 11/04/05

DRAWN BY JAM  
 CHECKED BY DDM

2/17/2006 2:05:42 PM  
 P:\541\roads\66563\66563\_Enst\_Fork\Sheet28.EF.dgn