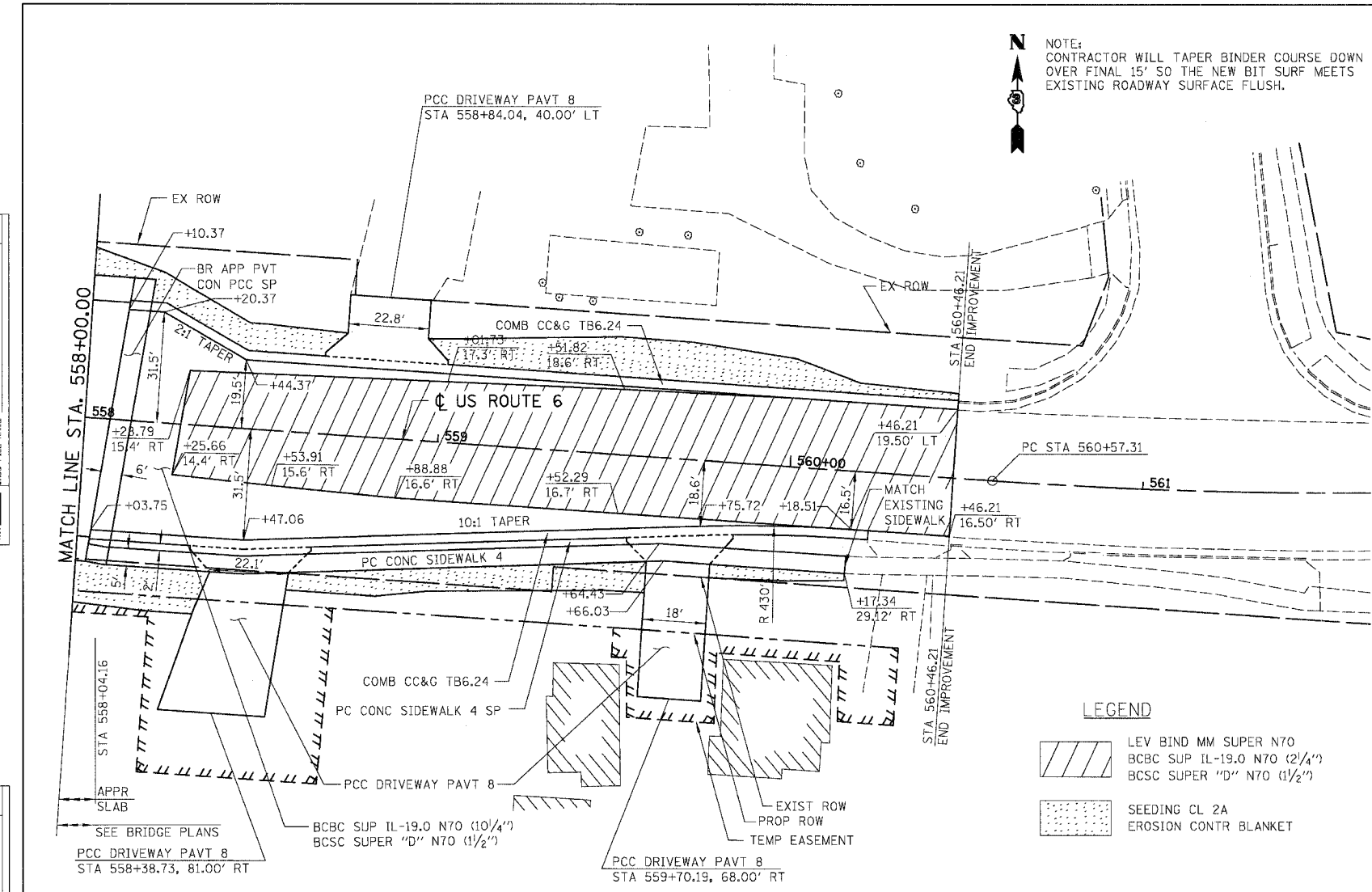
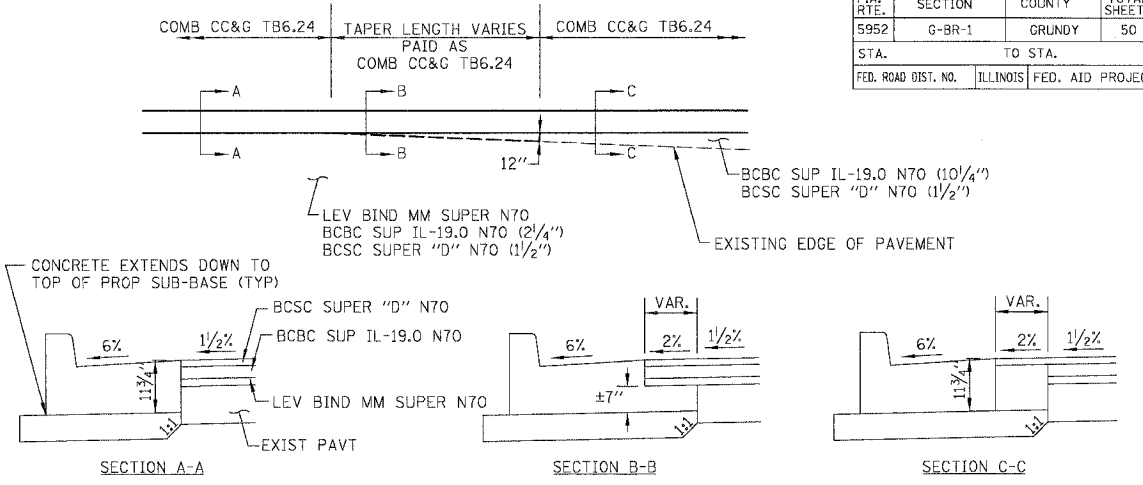


F.A. RTE.	SECTION	COUNTY	TOTAL SHEETS	SHEET NO.
5952	G-BR-1	GRUNDY	50	14
STA.	TO STA.			
FED. ROAD DIST. NO.	ILLINOIS	FED. AID PROJECT		

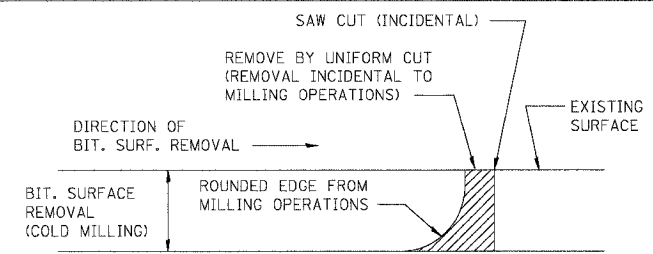
NOTE:
CONTRACTOR WILL TAPER BINDER COURSE DOWN OVER FINAL 15' SO THE NEW BIT SURF MEETS EXISTING ROADWAY SURFACE FLUSH.



- LEGEND**
- LEV BIND MM SUPER N70
BCBC SUP IL-19.0 N70 (2 1/4'')
BCSC SUPER "D" N70 (1 1/2'')
 - SEEDING CL 2A
EROSION CONTR BLANKET



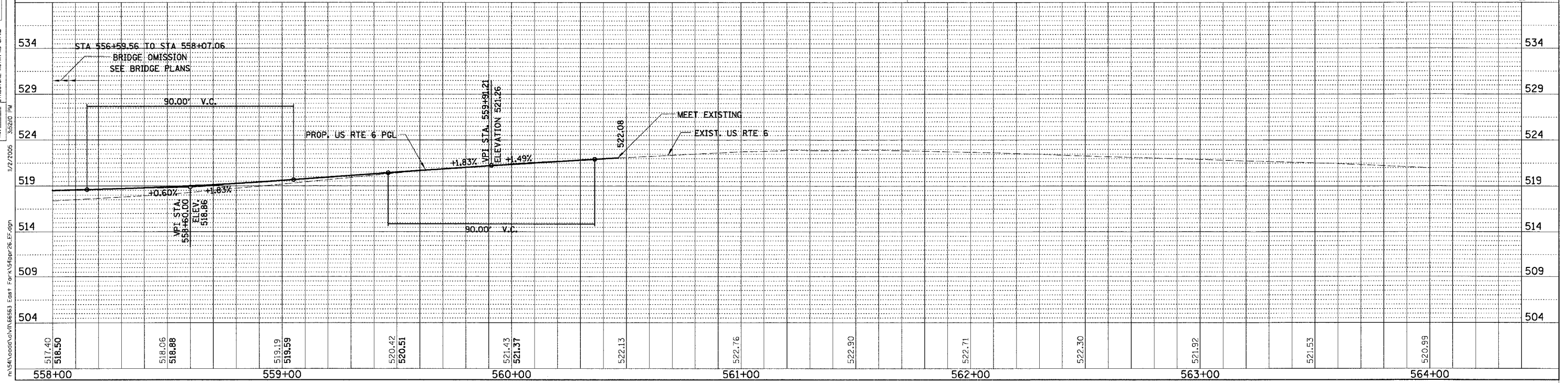
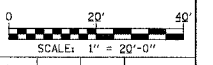
CONCRETE CURB AND GUTTER DETAILS



NOTE: WHEN MILLING OPERATIONS PRODUCE A ROUNDED EDGE, THEN A SAW CUT SHALL BE USED TO MANUFACTURE A PERPENDICULAR EDGE AS SHOWN IN THE DETAIL. THE ENGINEER SHALL BE THE SOLE JUDGE CONCERNING THE USE OF THIS DETAIL.

BITUMINOUS DETAIL AT BUTT JOINTS

406-8



US ROUTE 6 - PROPOSED ROADWAY PLAN & PROFILE

PLAN

REVISIONS	DATE
NO. 1	
NO. 2	
NO. 3	
NO. 4	
NO. 5	
NO. 6	
NO. 7	
NO. 8	
NO. 9	
NO. 10	

PROFILE

REVISIONS	DATE
NO. 1	
NO. 2	
NO. 3	
NO. 4	
NO. 5	
NO. 6	
NO. 7	
NO. 8	
NO. 9	
NO. 10	

1/2/2005
n:\5\1\cadd\vol\IN\6563 Easr For K\548pdr26.EP.dgn