

STATE OF ILLINOIS
DEPARTMENT OF TRANSPORTATION

ROUTE NO.	SECTION	COUNTY	TOTAL SHEETS	SHEET NO.
S.A.U. 6982	①	GRUNDY	50	32
FED. ROAD DIST. NO. 7	ILLINOIS	FED. AID PROJECT-		

SHEET NO. 52
OF 514 SHEETS

① G-BR-1 66563

GENERAL NOTES

Reinforcement bars shall conform to the requirements of AASHTO M31 or M322 Grade 60.

Layout of slope protection system may be varied in the field to suit ground conditions as directed by the Engineer.

The Contractor shall make allowance for the deflection of forms, shrinkage and settlement of falsework, in addition to allowance for dead load deflection.

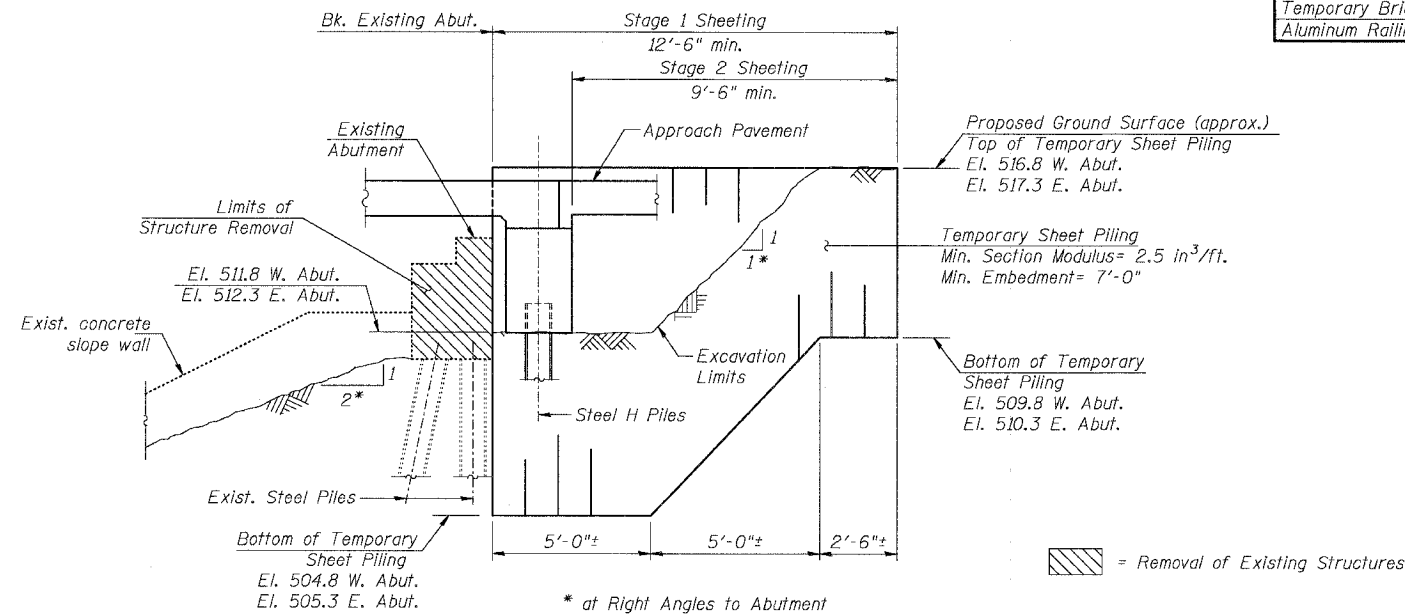
The Contractor shall drive two HP10x42 test piles in a permanent location one at the West Abutment and one at Pier 2 before ordering the remainder of piles.

If the Contractor chooses to alter the temporary cantilevered sheet piling design requirements shown on the plans, a design submittal including plan details and calculations will be required for review and acceptance by the engineer.

All construction joints shall be bonded.

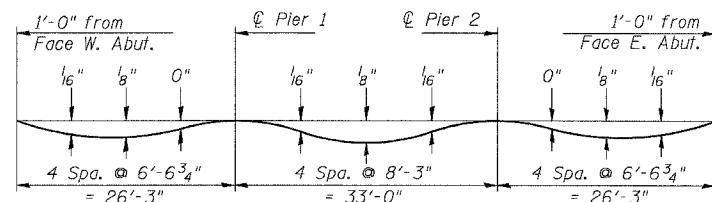
TOTAL BILL OF MATERIAL

ITEM	UNIT	SUPER	SUB	TOTAL
Removal of Existing Structures	Each	-	-	1
Structure Excavation	Cu. Yd.	-	177	177
Concrete Structures	Cu. Yd.	-	270.7	270.7
Concrete Superstructure	Cu. Yd.	422.5	-	422.5
Protective Coat	Sq. Yd.	855	-	855
Bridge Deck Grooving	Sq. Yd.	632	-	632
Reinforcement Bars, Epoxy Coated	Pound	77900	24350	102250
Bar Splacers	Each	346	92	438
Name Plates	Each	1	-	1
Floor Drains	Each	8	-	8
Furnishing Steel Piles HP 10x42	Foot	-	1630	1630
Driving Steel Piles	Foot	-	1630	1630
Test Pile Steel HP 10x42	Each	-	2	2
Temporary Sheet Piling	Sq. Ft.	-	250	250
Underwater Structure Excavation Protection, Location 1	Each	-	1	1
Underwater Structure Excavation Protection, Location 2	Each	-	1	1
Stone Riprap, Class A4	Sq. Yd.	-	760	760
Filter Fabric	Sq. Yd.	-	760	760
Temporary Bridge Rail	Foot	231	-	231
Aluminum Railing, Type L	Foot	211	-	211



TEMPORARY SHEET PILING

(Above diagram is drawn looking perpendicular to roadway)



DEAD LOAD DEFLECTION DIAGRAM
(Includes weight of concrete only.)

DESIGNED	UM
CHECKED	MRM
DRAWN	UM/MRM
CHECKED	BLU

DATE: 11/24/05

GENERAL NOTES AND
TOTAL BILL OF MATERIAL
U.S. ROUTE 6 (BEDFORD ROAD)
OVER EAST FORK OF NETTLE CREEK
FAU 5952-SEC. G-BR-1

BOWMAN, BARRETT
& ASSOCIATES INC.
CONSULTING ENGINEERS
130 E. RANDOLPH STREET
CHICAGO, ILLINOIS 60601
JOB NO. 541



GRUNDY COUNTY
STATION 557+33.31
S.N. 032-0108