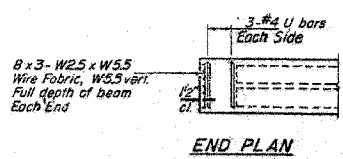
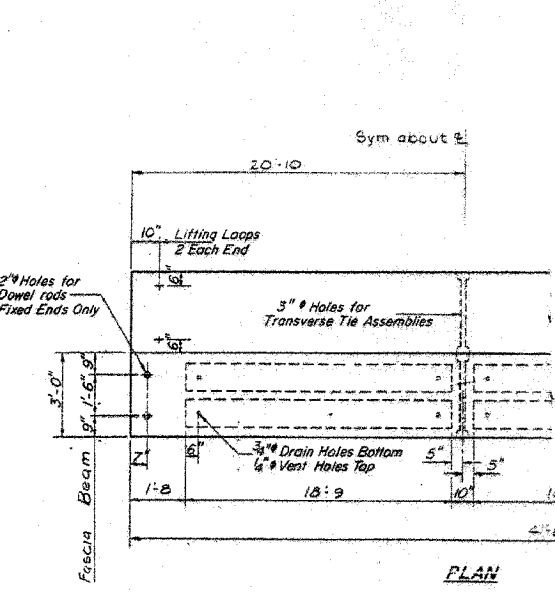
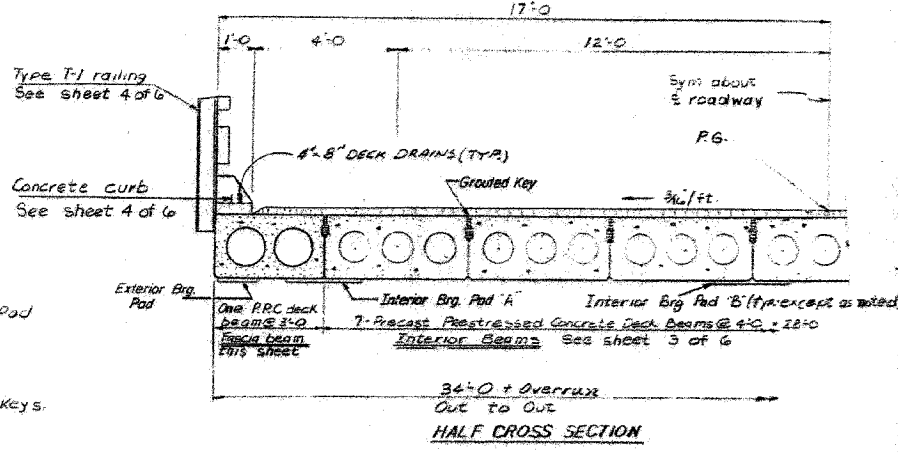
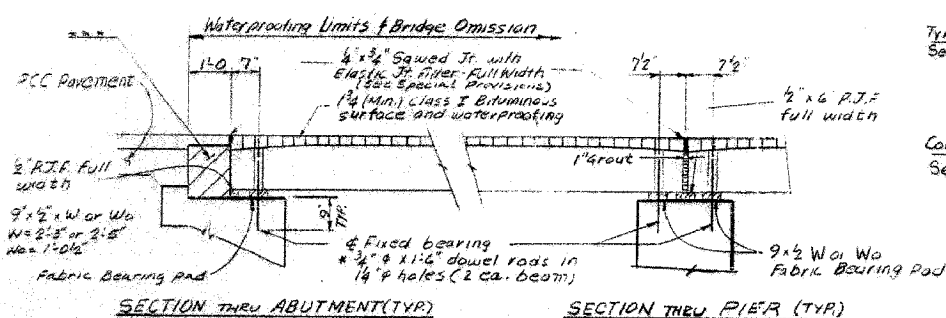
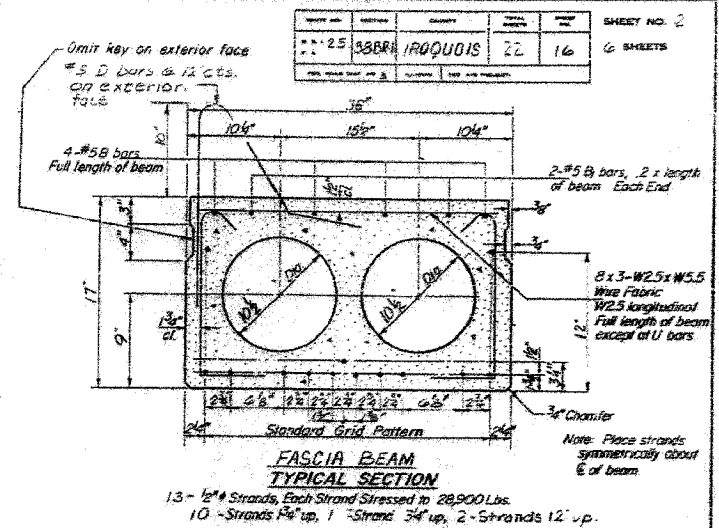
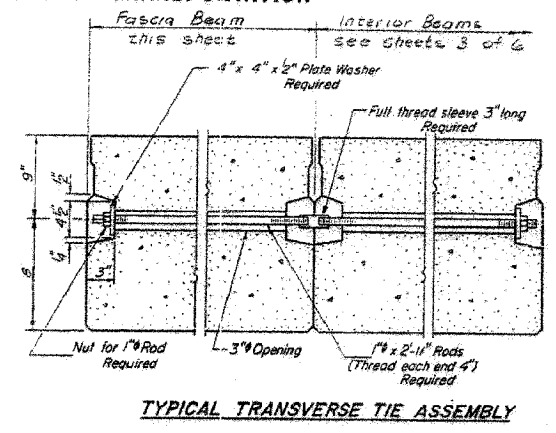
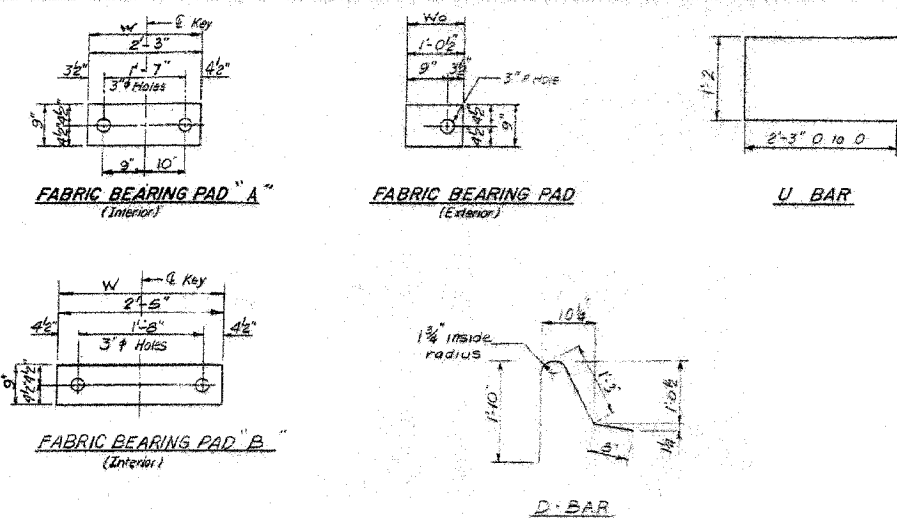


F.A.S. RTE.	SECTION	COUNTY	TOTAL SHEETS	TOTAL SHEET NO.
1324	38 BR-1	IROQUOIS	29	17
STA.		TO STA.		
FED. ROAD DIST. NO.		ILLINOIS FED. AID PROJECT		

STATE OF ILLINOIS
DEPARTMENT OF TRANSPORTATION



DESIGNED	D. J.
CHECKED	W. E. K.
DRAWN	P. WRONSKY
CHECKED	A. J. M.

PD-3-S 4-15-93

NOTE
For Anticipated Camber Diagram and Lifting Loop Details See Sheet 3 of 6

NOTES
Prestressing steel shall be non-galvanized high strength, stress-relieved 7-wire strand, Grade 270. The nominal diameter shall be 1/2" and the nominal cross-sectional area shall be 0.153 sq. in. Lifting loops shall be 5/8" diameter, 6x25 class wire rope with fiber core and shall have a minimum ultimate tensile strength of 33,000 lbs. or 2-#2-270 kpsi strands, as shown. The 1" rods in the transverse tie assembly shall be tightened to a snug fit and the threads set. Pockets that receive transverse tie bar on outside shall be filled with grout after transverse tie assembly is in place. Reinforcement bars shall conform to AASHTO M-318M-22 or M-33 Grade 60. The bearing seat surfaces shall be adjusted by shimming to assure firm and even bearing. Two 1/8" fabric adjusting shims of the dimensions of the Exterior Bearing Pad shall be provided for each bearing. Keyway surfaces shall be cleaned to remove form oil or other bond breaking material prior to shipment of the beams. Cleaning shall be done by sandblasting the keyway areas between top of the beam and the bottom edge of the key. A Calcium Nitrite Corrosion Inhibitor, as covered in the Special Provisions, shall be used in the concrete for precast prestressed concrete deck beams. Required Release Strength, f'ci, shall be 4000 p.s.i. An equal substitution of the low-relaxation strands for the stress-relieved strands will be permitted.

BILL OF MATERIAL

Bar	No.	Size	Length	Shape
Precast Prestressed Concrete Deck Beams	Sq Ft		4,250.	
Class. x Conc. Support	Cu Yd		3.6	

(*) Includes FASCIA & INTERIOR Beams
(**) Backwall Concrete: for details see sheet 5 of 6

PRECAST DECK BEAMS - FASCIA
S.B.I. ROUTE 25 SECTION 38 BR-1
IROQUOIS COUNTY
STATION 558+74

REVISIONS

NAME	DATE

ILLINOIS DEPARTMENT OF TRANSPORTATION
EXISTING BRIDGE PLANS
FAS 1324 (OLD US RTE 45)
SECTION 38 BR-1
IROQUOIS COUNTY

SCALE: VERT. _____
HORIZ. _____
DATE: 11/16/05

DRAWN BY: SUTHEARD
CHECKED BY: BOTT

G & B
GARRENE & BRADFORD, INC.
CONSULTING ENGINEERS
2300 SPRINGFIELD
SPRINGFIELD, ILLINOIS 62761
PROFESSIONAL ENGINEER, No. 021-000178
PROFESSIONAL ARCHITECT, No. 021-000178

COMPUTER FILE NO.
03236.W010.EPLN
PROJECT 03236 W010
11/16/05 - MDS

FOR INFORMATION ONLY

PLOT DATE = 12/9/2005
FILE NAME = J:\03236\W010\DRAWINGS\03236.W010.EPLN.dgn
PLOT SCALE = 50.000000
REFERENCE = REF.
OPERATOR = psjp