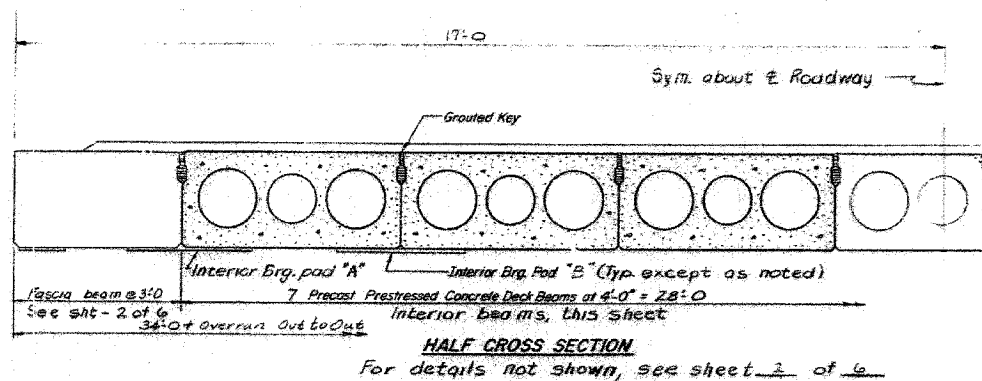
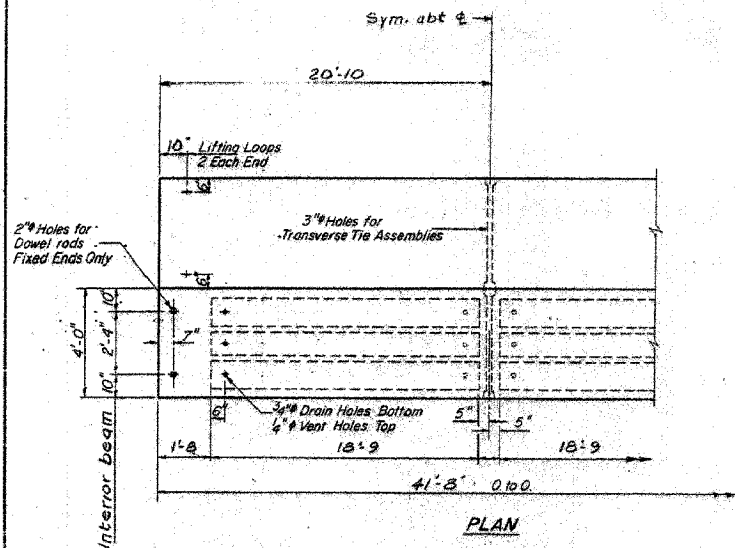
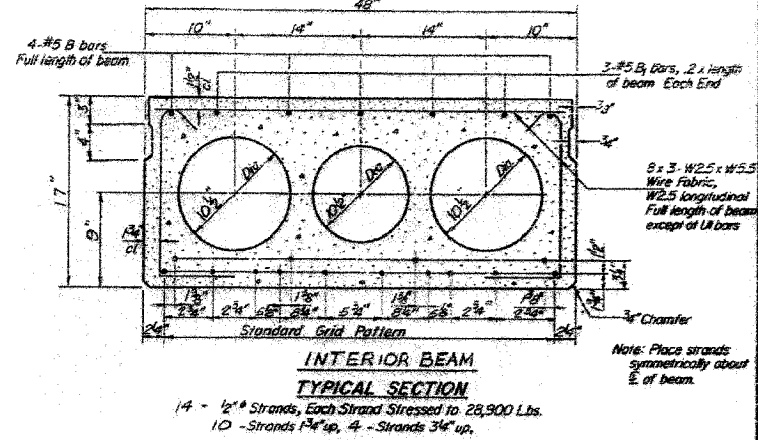
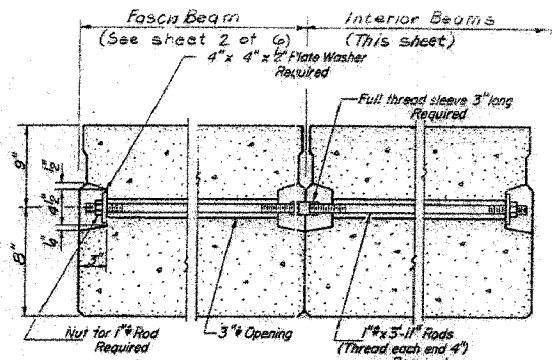
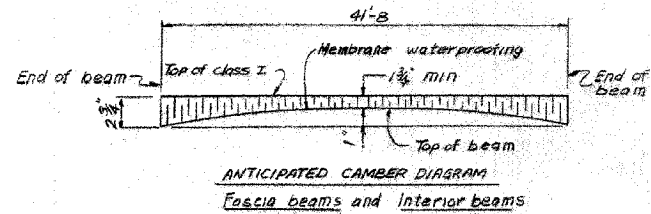


F.A.S. RTE.	SECTION	COUNTY	TOTAL SHEETS	SHEET NO.
1324	38 BR-1	IROQUOIS	29	16
STA.		TO STA.		
FED. ROAD DIST. NO.	ILLINOIS	FED. AID PROJECT		

STATE OF ILLINOIS
DEPARTMENT OF TRANSPORTATION

DATE	SECTION	PROJECT	DATE	SHEET NO.
11-25-05	38 BR-1	IROQUOIS	22	17
SHEET NO. 3 6 SHEETS				



FOR BILL OF MATERIAL
See sheet 2 of 6

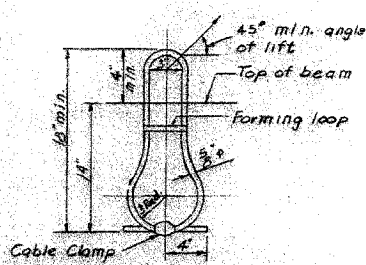
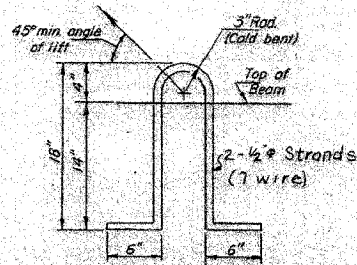
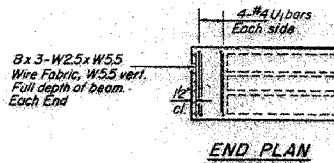
NOTES

Prestressing steel shall be non-galvanized high strength, stress-relieved 7-wire strand, Grade 270. The nominal diameter shall be 1/2" and the nominal cross-sectional area shall be 0.153 sq. in. Living loops shall be 5/8" diameter, 6 x 25 class wire rope with fiber core and shall have a minimum ultimate tensile strength of 53,000 lbs. or 2 - 1/2" - 270 ksi strands, as shown. The 1/4" rods in the transverse tie assembly shall be tightened to a snug fit and the threads set. Nuts that receive transverse tie bar on outside shall be filled with grout after transverse tie assembly is in place. Reinforcement bars shall conform to AASHTO M-31 or ASTM A-63 Grade 60. The bearing seat surfaces shall be adjusted by shimming to assure firm and even bearing. Two 1/8" fabric adjusting shims of the dimensions of the Exterior Bearing Pad shall be provided for each bearing. Keyway surfaces shall be cleaned to remove form oil or other bond breaking material prior to shipment of the beams. Cleaning shall be done by sandblasting the keyway areas between top of the beam and the bottom edge of the key. A Calcium Nitrite Corrosion Inhibitor, as covered in the Special Provisions, shall be used in the concrete for precast prestressed concrete deck beams. Required Release Strength, f_{cr}, shall be 4,200 p.s.i. An equal substitution of the low-relaxation strands for the stress-relieved strands will be permitted.

NOTE:

For details of bearing pads see sheet 2 of 6

PRECAST DECK BEAMS - INTERIOR
S.B.I. ROUTE 25 SECTION 38 BR-1
IROQUOIS COUNTY
STATION 558+74



DESIGNED	D. J.
CHECKED	W. E. K.
DRAWN	P. Wronosky
CHECKED	A. J. M.

PD-4-S 4-5-83

FOR INFORMATION ONLY

REVISIONS	
NAME	DATE

ILLINOIS DEPARTMENT OF TRANSPORTATION
EXISTING BRIDGE PLANS
FAS 1324 (OLD US RTE 45)
SECTION 38 BR-1
IROQUOIS COUNTY

SCALE: VERT. DATE: 11/16/05
DRAWN BY: SUTHEARD
CHECKED BY: BOTT

GREENE & BRADFORD, INC.
OF SPRINGFIELD
COMPUTER FILE NO. 03236.W010.EPLN
PROJECT 03236 W010 11/16/05 - MDS