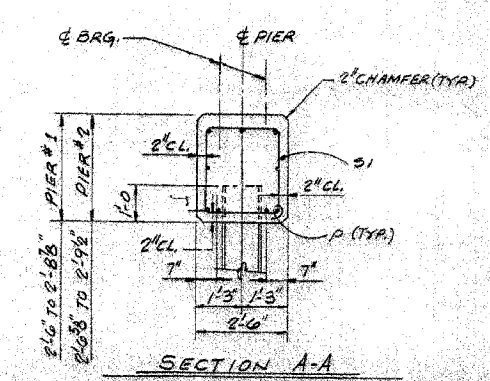
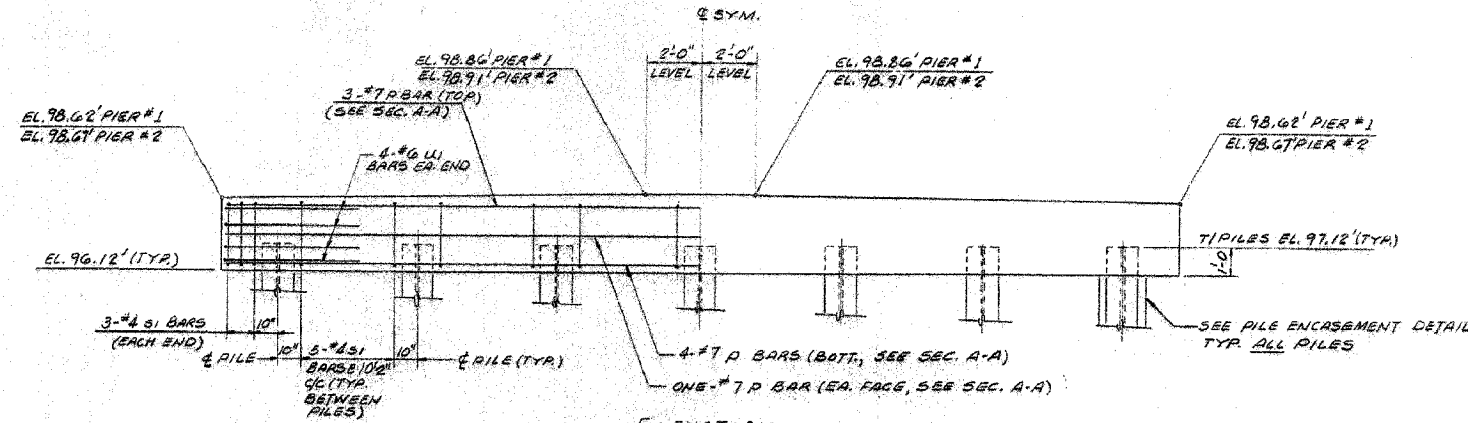
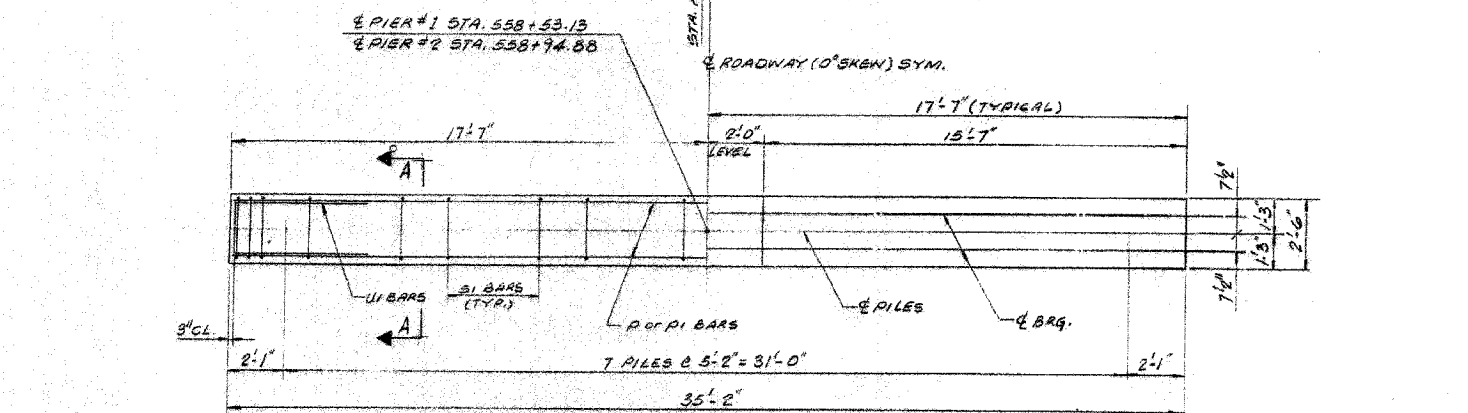


F.A.S. RTE.	SECTION	COUNTY	TOTAL SHEETS	SHEET NO.
1324	38 BR-1	IROQUOIS	29	21
STA.	TO STA.			
FED. ROAD DIST. NO.	ILLINOIS	FED. AID PROJECT		

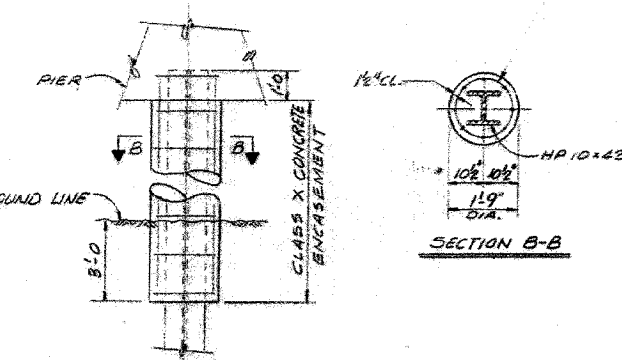
STATE OF ILLINOIS
DEPARTMENT OF TRANSPORTATION

ROUTE NO.	SECTION	COUNTY	DATE	SHEET NO.
38 BR-1	38 BR-1	IROQUOIS	22 20	6 SHEETS
FED. ROAD DIST. NO. 3 ILLINOIS FED. AID PROJECT				



PILE DATA

PIER #1	PIER #2
TYPE: HP 10 x 42	TYPE: HP 10 x 42
CAPACITY: 45 TONS, DRIVEN TO 68 TONS BRG.	CAPACITY: 45 TONS, DRIVEN TO 68 TONS BRG.
EST. LENGTH: 37 FT.	EST. LENGTH: 37 FT.
NO. REQD.: 7	NO. REQD.: 6 PLUS * ONE TEST PILE
	* Drive to 24 Ton Brg.



TWO PIERS
BILL OF MATERIAL

NUMBER	BAR PIER #1	PIER #2	TOTAL	SIZE	LENGTH	SHAPE
P	9	9	18	#7	34'-10"	—
S1	36	36	72	#2	9'-5"	□
U1	8	8	16	#6	11'-1"	—
TWO PIERS TOTALS						
CLASS X CONCRETE			CU. YDS.	17.2		
REINFORCEMENT BARS			LBS.	2000		
STEEL PILES (HP 10 x 42)			LN. FT.	481		
TEST PILE (HP 10 x 42)			EACH	1		
CLASS X Concrete Encasement			CU. YDS.	1.5		

PIER #1 AND PIER #2
S.B.I. ROUTE 25, SECTION 38 BR-1
IROQUOIS COUNTY
STATION 558+74

DESIGNED	DJ
CHECKED	WK
DRAWN	AJM
CHECKED	P.W.

PLT DATE = 12/17/2005
FILE NAME = J:\03236\MOIDRAWINGS\03236_W010.EPLN.dgn
PLOT SCALE = 1/4" = 1'-0"
REFERENCE = .REF.
OPERATOR = PWP

FOR INFORMATION ONLY

REVISIONS

NAME	DATE

ILLINOIS DEPARTMENT OF TRANSPORTATION
EXISTING BRIDGE PLANS
FAS 1324 (OLD US RTE 45)
SECTION 38 BR-1
IROQUOIS COUNTY

SCALE: VERT. DATE: 11/16/05
HORIZ. DATE: 11/16/05
DRAWN BY: SUTHEARD
CHECKED BY: BOTT

GREENE & BRADFORD, INC.
CONSULTING ENGINEERS
1071 7th St., Springfield, IL 62761
PH: 217-223-8800 FAX: 217-223-8801

COMPUTER FILE NO.
03236_W010.EPLN
PROJECT 03236 W010
11/16/05 - MDS